

4817 HILL STREET

4817 Hill Street, Abilene, TX 79602

EXECUTIVE
SUMMARY



OFFERING SUMMARY

Available SF:	1,966 SF
Lot Size:	0.36 Acres
Year Built:	1984
Building Size:	1,966 SF
Renovated:	2022

PROPERTY OVERVIEW

(4) Offices / Class A
Reception area
Warehouse
Fenced Yard

PROPERTY HIGHLIGHTS

- Office
- Warehouse
- Fenced Yard

MATTHEW MUZECHENKO

325.439.1420

matt@pauljohnsonrealtors.com



4633 South 14th Street | Abilene, TX 79605 | 325.698.5661

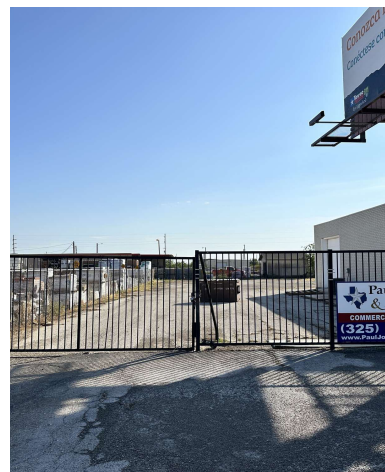
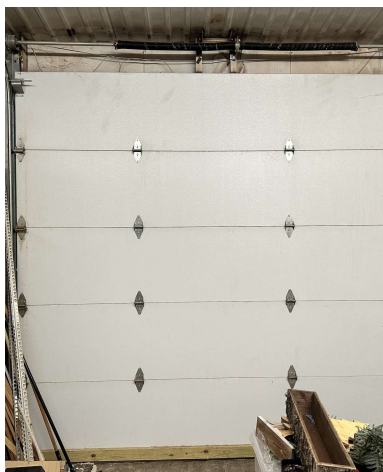
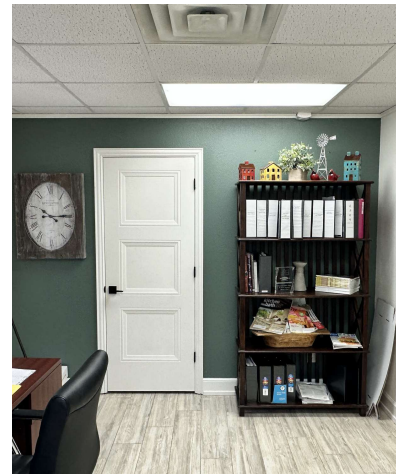
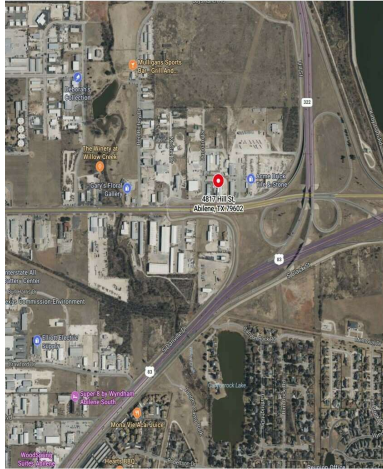
Brokerage makes no representation as to accuracy of all data presented.

PAULJOHNSONREALTORS.COM

4817 HILL STREET

4817 Hill Street, Abilene, TX 79602

ADDITIONAL
PHOTOS



MATTHEW MUZECHENKO

325.439.1420

matt@pauljohnsonrealtors.com



4633 South 14th Street | Abilene, TX 79605 | 325.698.5661

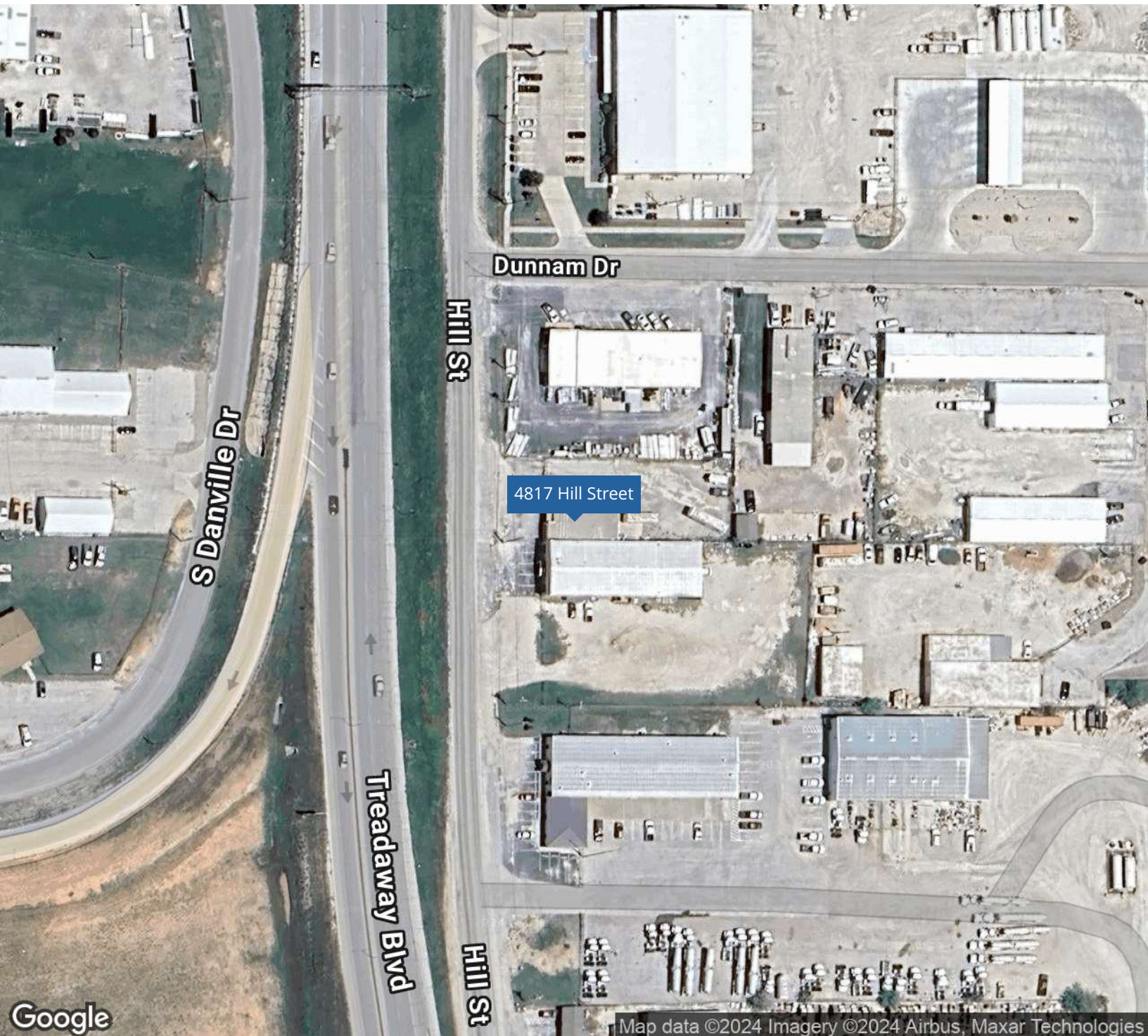
Brokerage makes no representation as to accuracy of all data presented.

PAULJOHNSONREALTORS.COM

4817 HILL STREET

4817 Hill Street, Abilene, TX 79602

LOCATION
MAP



MATTHEW MUZECHENKO

325.439.1420

matt@pauljohnsonrealtors.com



4633 South 14th Street | Abilene, TX 79605 | 325.698.5661

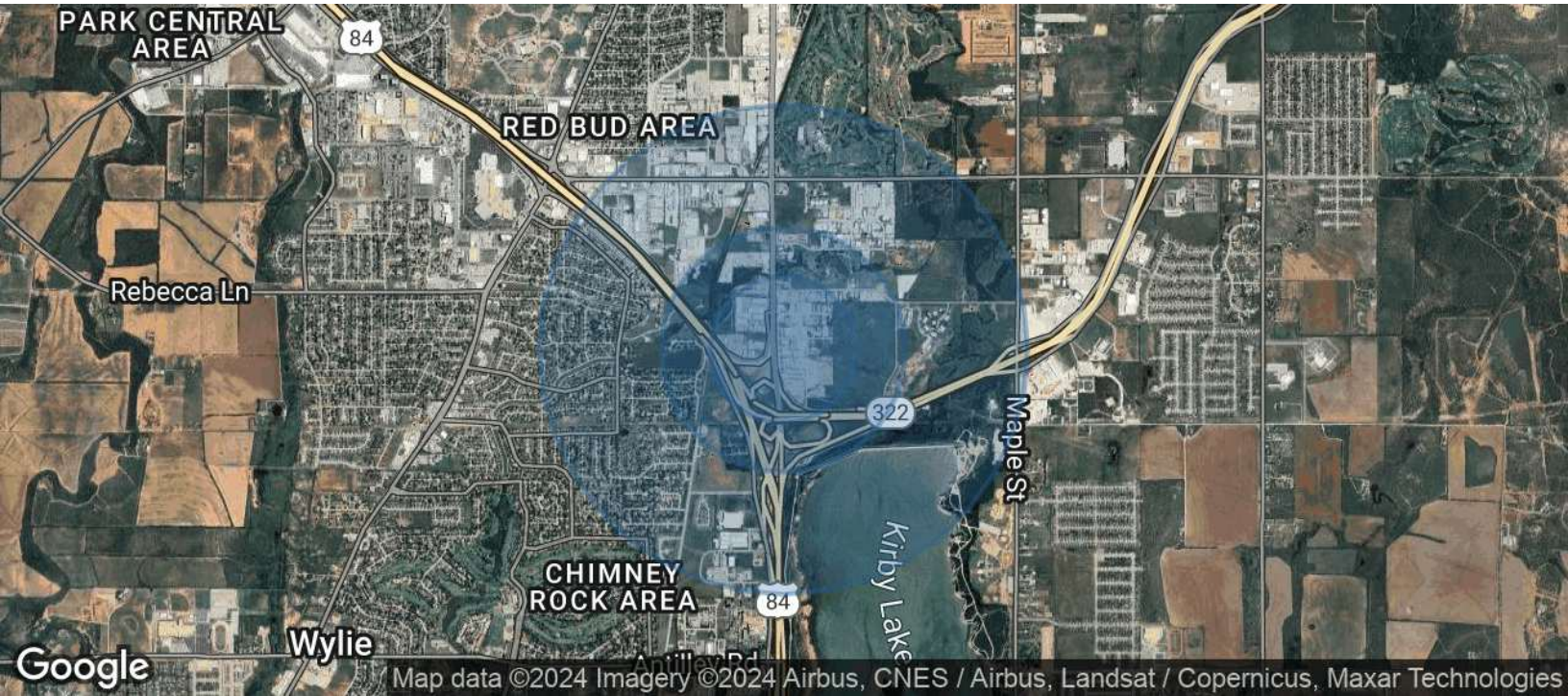
Brokerage makes no representation as to accuracy of all data presented.

PAULJOHNSONREALTORS.COM

4817 HILL STREET

4817 Hill Street, Abilene, TX 79602

DEMOGRAPHICS
MAP & REPORT



POPULATION	0.3 MILES	0.5 MILES	1 MILE
Total Population	6	157	2,802
Average Age	42	48	46
Average Age (Male)	39	44	44
Average Age (Female)	43	51	48

HOUSEHOLDS & INCOME	0.3 MILES	0.5 MILES	1 MILE
Total Households	2	65	1,139
# of Persons per HH	3	2.4	2.5
Average HH Income	\$81,961	\$99,338	\$101,173
Average House Value	\$198,888	\$353,112	\$313,054

Demographics data derived from AlphaMap

MATTHEW MUZECHENKO

325.439.1420
matt@pauljohnsonrealtors.com

