

7100 GUILFORD

7100 GUILFORD DRIVE, FREDERICK, MD 21704



OFFERING SUMMARY

Lease Rate:	\$21.00 SF/yr (NNN)
Building Size:	40,000 SF
Available SF:	2,000 - 20,000 SF
Lot Size:	3.35 Acres
Year Built:	2021
Zoning:	ORI
Market:	Frederick
Submarket:	Frederick

PROPERTY OVERVIEW

NEW BUILDING COMPLETED! READY FOR OCCUPANCY!

7100 Guilford is a new, Class A, Professional and Medical Office Building. The property was designed during the COVID pandemic and as such includes touchless or minimal touch features throughout including toe-kick elevator buttons. This is a must see office property designed, built, owned and managed by local real estate professionals.

PROPERTY HIGHLIGHTS

- Brand new Class A building
- Flexible suite sizes
- Minimum suite size - 2,000 square feet
- Maximum suite size - 20,000 square feet
- Local and experienced landlord to assist in space design and construction
- 4.2 parking spaces per 1,000 square feet
- High speed data
- Touchless features such as auto door openers and toe-kick elevator buttons



JUSTIN AUSHERMAN

240.578.4220
JUSTIN@AUSHCO.COM

201 Thomas Johnson Drive Suite 202 | Frederick, MD 21701 | [AUSHCO.COM](https://www.aushco.com)

7100 GUILFORD

7100 GUILFORD DRIVE, FREDERICK, MD 21704



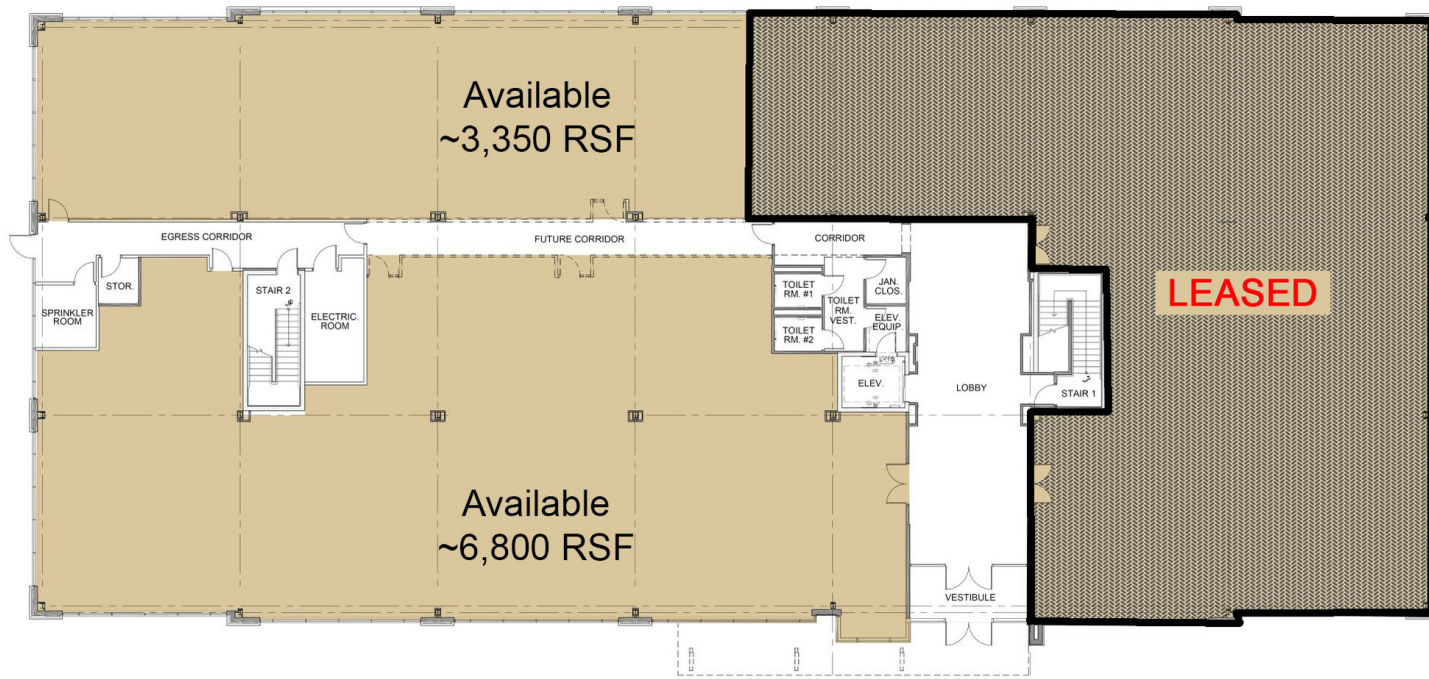
JUSTIN AUSERMAN

240.578.4220
JUSTIN@AUSHCO.COM

201 Thomas Johnson Drive Suite 202 | Frederick, MD 21701 | AUSHCO.COM

7100 GUILFORD

7100 GUILFORD DRIVE, FREDERICK, MD 21704



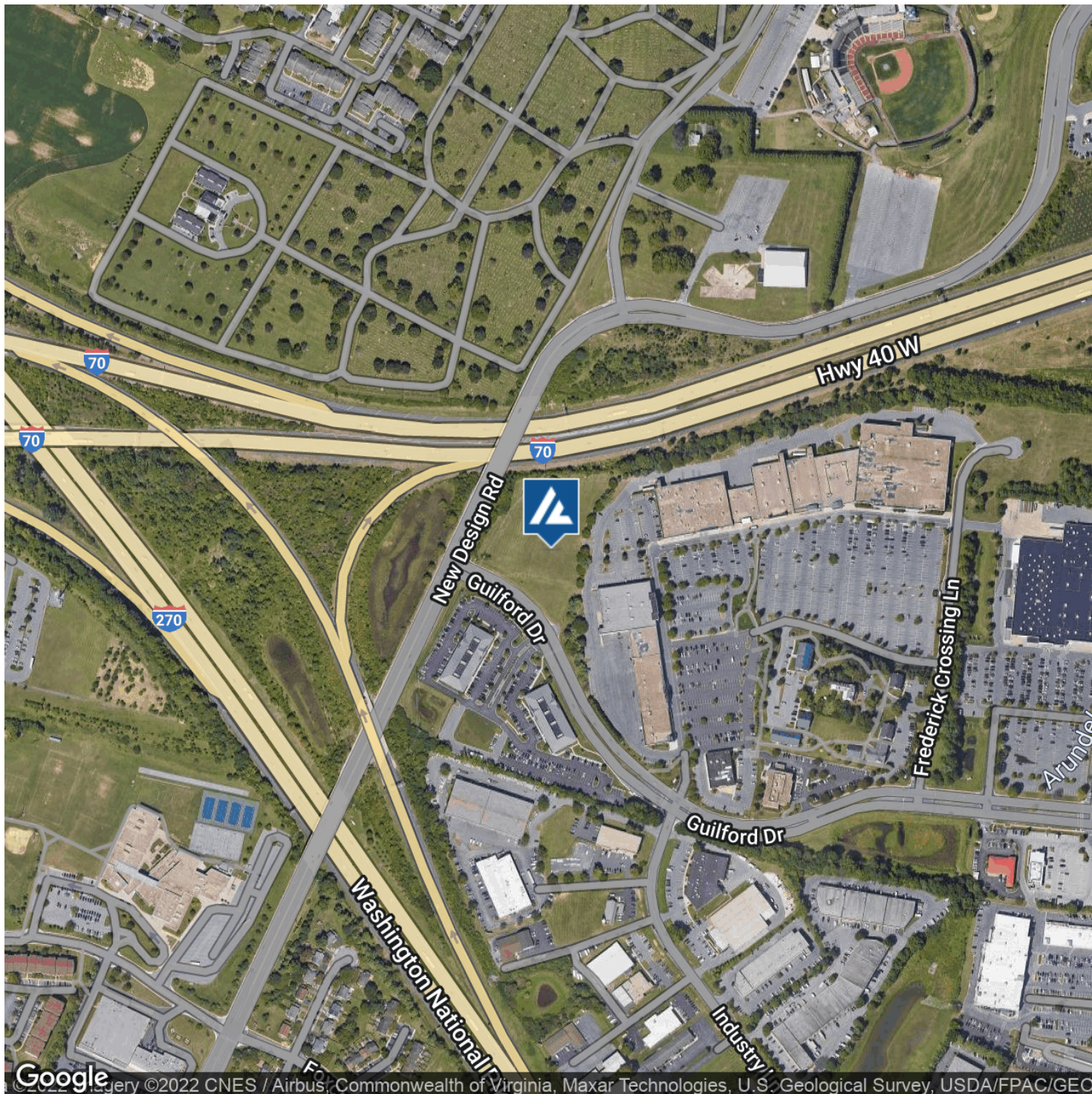
JUSTIN AUSERMAN

240.578.4220
JUSTIN@AUSHCO.COM

201 Thomas Johnson Drive Suite 202 | Frederick, MD 21701 | AUSHCO.COM

7100 GUILFORD

7100 GUILFORD DRIVE, FREDERICK, MD 21704



Google Earth ©2022 CNES / Airbus, Commonwealth of Virginia, Maxar Technologies, U.S. Geological Survey, USDA/FPAC/GEO



JUSTIN AUSHERMAN

240.578.4220
JUSTIN@AUSHCO.COM

201 Thomas Johnson Drive Suite 202 | Frederick, MD 21701 | [AUSHCO.COM](https://www.aushco.com)