

# BUILDING FOR LEASE OR SALE

**3680 ROUTE 9 SOUTH - FREEHOLD, N.J.**  
**4 STORY BUILDING +/- 67,739 SQ FT**

**3RD FLOOR AVAILABLE +/- 13,600 SQ FT**  
**4TH FLOOR AVAILABLE +/- 13,600 SQ FT**



**ZONING**  
**CMX-4: CORPORATE MULTI USE**

**BLOCK 70.05 LOT 11 ACRES 14.79**

## Permitted Uses

- Office
- Health Services:
  - Physicians
  - Dentists
  - Health Practitioners
  - Medical & Diagnostic Labs
- Conference & Convention Centers
- Hotels (100 Room Minimum)
- Elementary & Secondary Schools
- Food Services (1,250 SF Minimum)
- Retail
- Self Storage

**SUZANNE MACNOW CBRE**  
Senior Vice President  
+732 580 0156  
suzanne.macnow@cbre.com  
Licensed Real Estate Broker

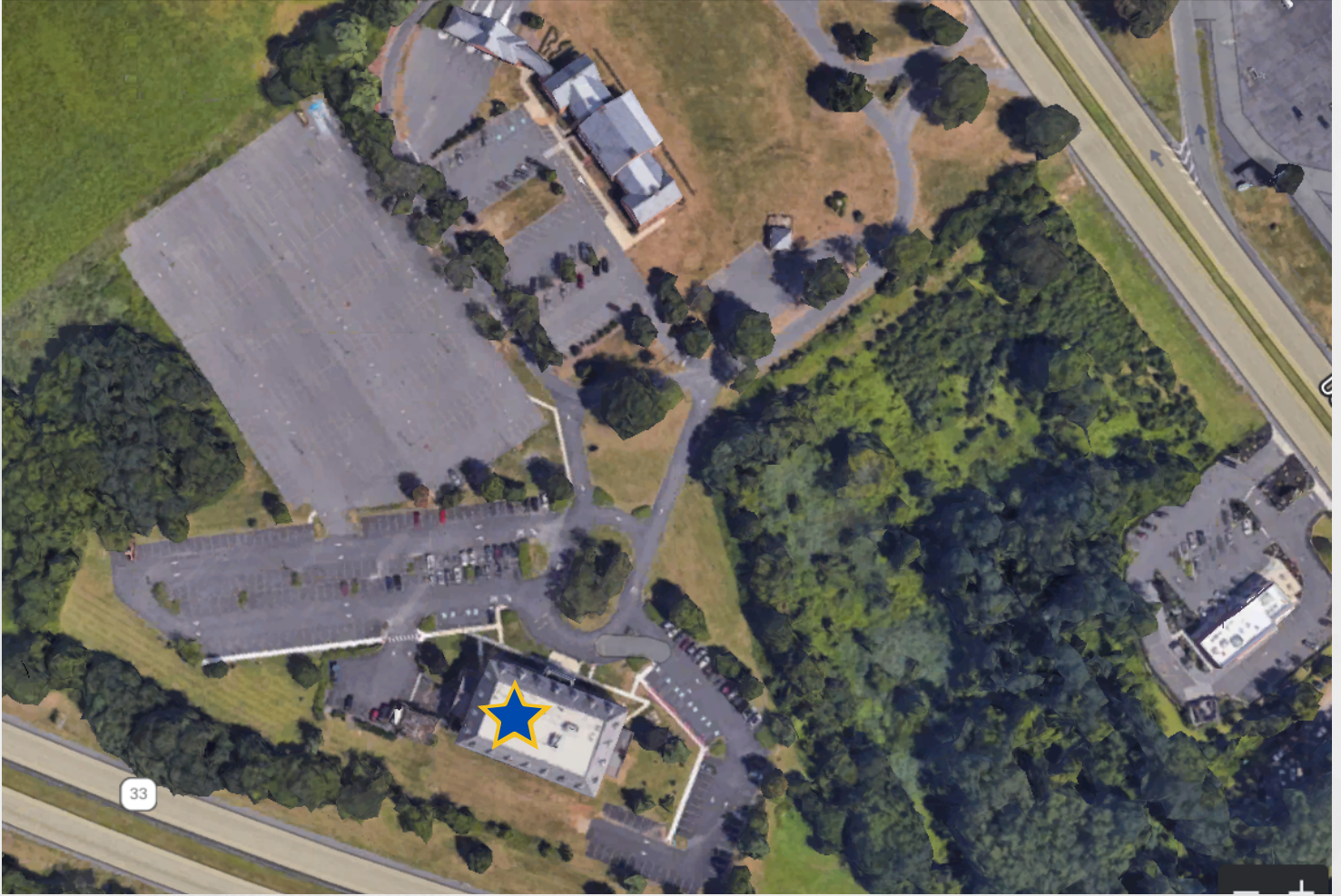
**JOHN B. KROK Byron Real Estate**  
Executive Vice President  
+732 673 6784  
jkrok@ByronRE.com  
Licensed Real Estate Broker

**GIL MEDINA CBRE**  
Executive Vice President  
+201 712 5850  
gualberto.medina@cbre.com  
Licensed Real Estate Broker



# PROPERTY AERIAL VIEW

3680 ROUTE 9 SOUTH - FREEHOLD, NEW JERSEY



## HIGHLIGHTS

Desirable location

Superior visibility and exposure on Highway 33 Express and Route 9

+/- 14.79 Acres - Potential to expand existing building

Excellent existing parking



## 3680 ROUTE 9 SOUTH FREEHOLD, NEW JERSEY

4 STORY BUILDING +/- 67,739 SQ FT ON 14.79 ACRES

**SUZANNE MACNOW CBRE**  
Senior Vice President  
+732 580 0156  
suzanne.macnow@cbre.com  
Licensed Real Estate Broker

**JOHN B. KROK Byron Real Estate**  
Executive Vice President  
+732 673 6784  
jkrok@ByronRE.com  
Licensed Real Estate Broker

**GIL MEDINA CBRE**  
Executive Vice President  
+201 712 5850  
gualberto.medina@cbre.com  
Licensed Real Estate Broker