

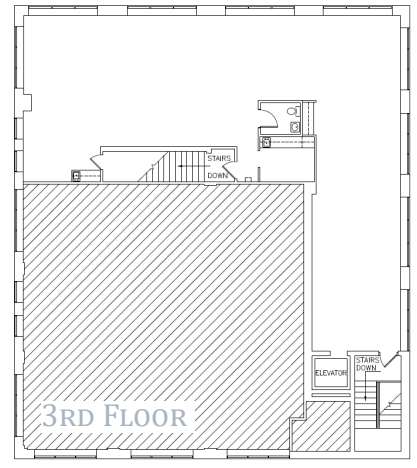
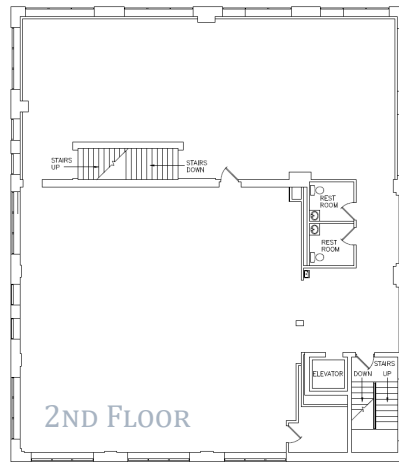
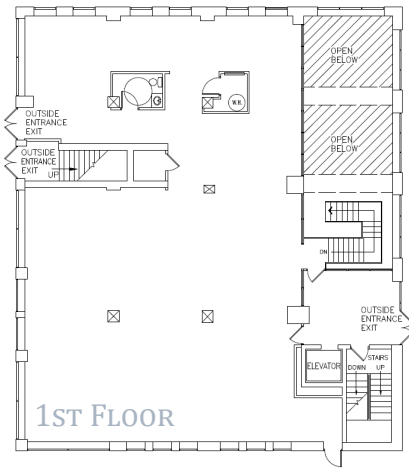
FOR LEASE

324 East New York Street

Indianapolis, IN



BUILDING HIGHLIGHTS



CAN ACCOMMODATE 14,000 -

17,500 SF SINGLE USER

OPEN CONCEPT

EXTERIOR SIGNAGE

ABUNDANT SUNLIGHT

CITY VIEWS

OUTDOOR COURTYARD

24 HOUR SECURITY

ONSITE PARKING FOR GUESTS,

GROCERY, HARDWARE, & BARBER



LOCKERBIE MARKETPLACE

Steps off the Cultural Trail, Lockerbie Marketplace has a unique historic charm with beautiful brick buildings and modern interior finishes. In addition, Lockerbie Marketplace is steps from Mass Ave, home to many restaurants, bars, and stores all within a few mile radius. Some onsite features include nearby parking, access to a fitness center and showers, conference room, and common areas.



NEARBY AMENITIES



Dining options include Bru Burger, The Tap, Rathskeller, The Eagle, Bakersfield & more



Grocery options include Needler's Fresh Market, Whole Foods, The City Market & more



Gym options include YMCA, The Hot Room, Club Pilates & a fitness center located in the park for Office Tenants - free of charge



Easy access to the cultural trail and underground protected bike storage



Numerous parking options in close proximity & free 2-hour onsite parking for Tenant's Customers



Event locations nearby include Old National Centre, The Rathskeller, Bankers Life & more



BIKE SCORE

95



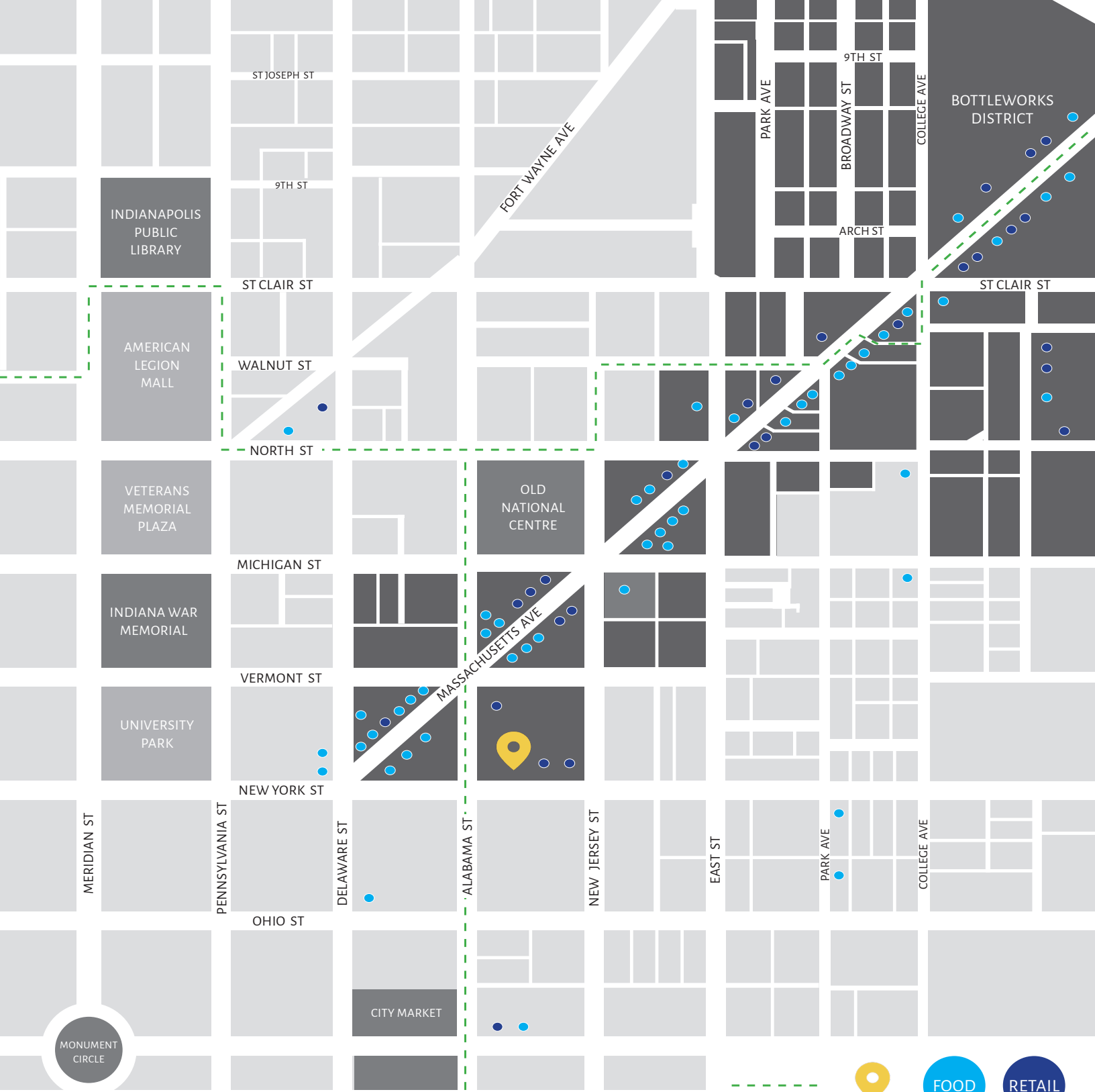
WALK SCORE

96



TRANSIT SCORE

65



MONUMENT
CIRCLE

- - - - - CULTURAL TRAIL
📍 BUILDING LOCATION
FOOD
RETAIL

(317) 577-7900

www.citimarkinc.com

info@citimarkinc.com