

UNIVERSITY CENTER II



10441 University Center Drive | Tampa, FL 33612

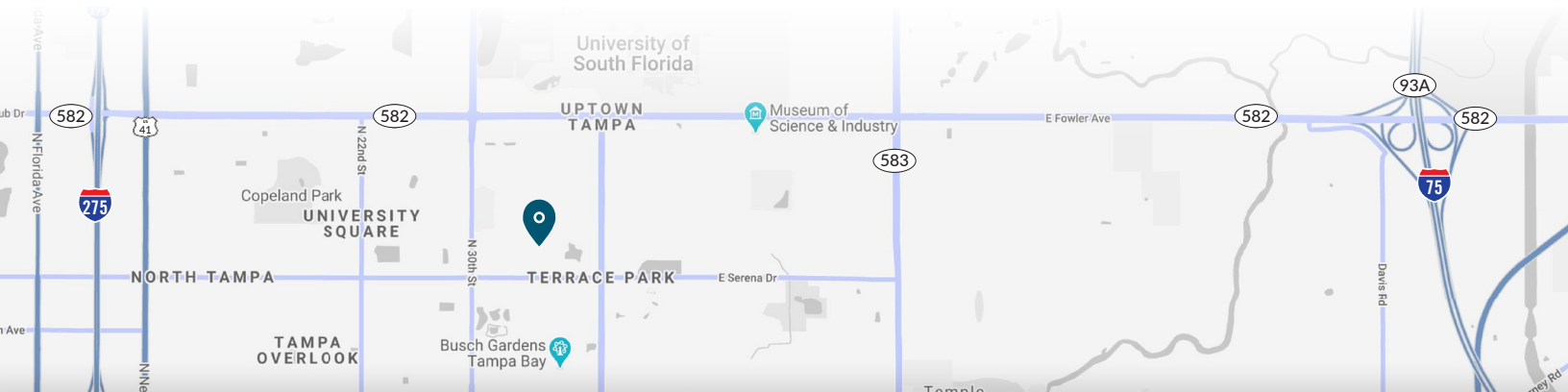
Move-In Ready Office Building For Lease



PROPERTY HIGHLIGHTS

Suite 100: 48,090 SF

- Move-in ready with furniture available
- Ample parking
- Ideal space for a call center
- Minutes from USF - Top 50 public/research university
- Located near Busch Gardens, MOSI, and an assortment of hotels and restaurants offering a variety of cuisines and delivery services
- Easy access to I-275 & I-75, US 41, E. Fowler Avenue, Brice B. Downs Blvd, and E Busch Blvd (SR-580)



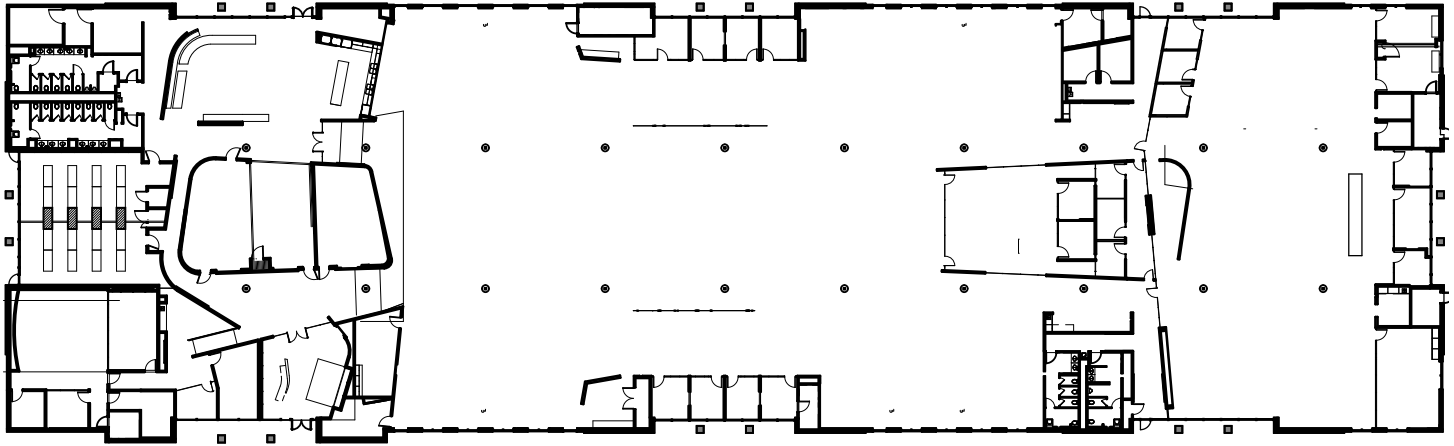
LICENSED REAL ESTATE BROKER | FranklinSt.com

CHAD RUPP | Managing Director
813.345.5891 | Chad.Rupp@FranklinSt.com

MATT ALEXANDER | Director
813.559.2006 | Matthew.Alexander@FranklinSt.com

FLOOR PLAN

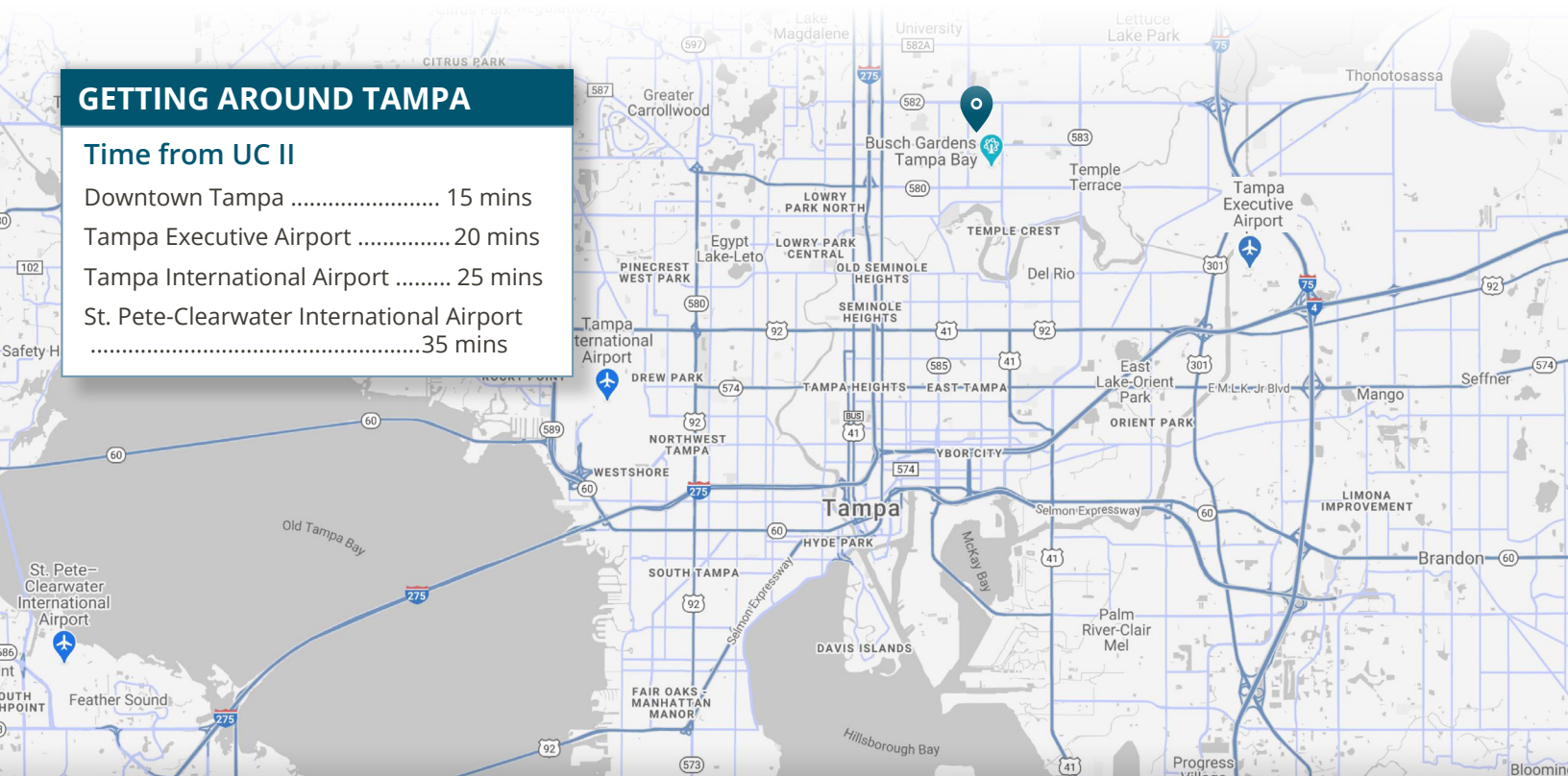
Suite 100: 48,090 SF



GETTING AROUND TAMPA

Time from UC II

- Downtown Tampa 15 mins
- Tampa Executive Airport 20 mins
- Tampa International Airport 25 mins
- St. Pete-Clearwater International Airport 35 mins



LICENSED REAL ESTATE BROKER | FranklinSt.com

CHAD RUPP | Managing Director
813.345.5891 | Chad.Rupp@FranklinSt.com

MATT ALEXANDER | Director
813.559.2006 | Matthew.Alexander@FranklinSt.com