

Cove Commons Plaza

5729 COVE COMMONS DRIVE SE | BROWNSBORO/ HAMPTON COVE, AL 35741

FOR LEASE



PROPERTY HIGHLIGHTS

- Suites available to accommodate a range of retail/office/medical users
- Excellent visibility with ample well lit, drive up parking
- Available suites are in shell condition
- Drive-thru capability on both end cap units
- 2020 Alabama Daily Traffic Count: 25,375

OFFERING SUMMARY

Lease Rate:	\$22.00 - 26.00 SF/yr (NNN)
Available SF:	1,200 - 6,000 SF
Lot Size:	2.45 Acres
Building Size:	14,400 SF

SPACES	LEASE RATE	SPACE SIZE
Suite D	\$22.00 SF/yr	1,200 SF
Suite E	\$22.00 SF/yr	2,400 SF
Suite F	\$26.00 SF/yr	2,400 SF



Jeff Parker

Broker
256.353.1112
jparker@parker-realestate.com

Jackson Parker

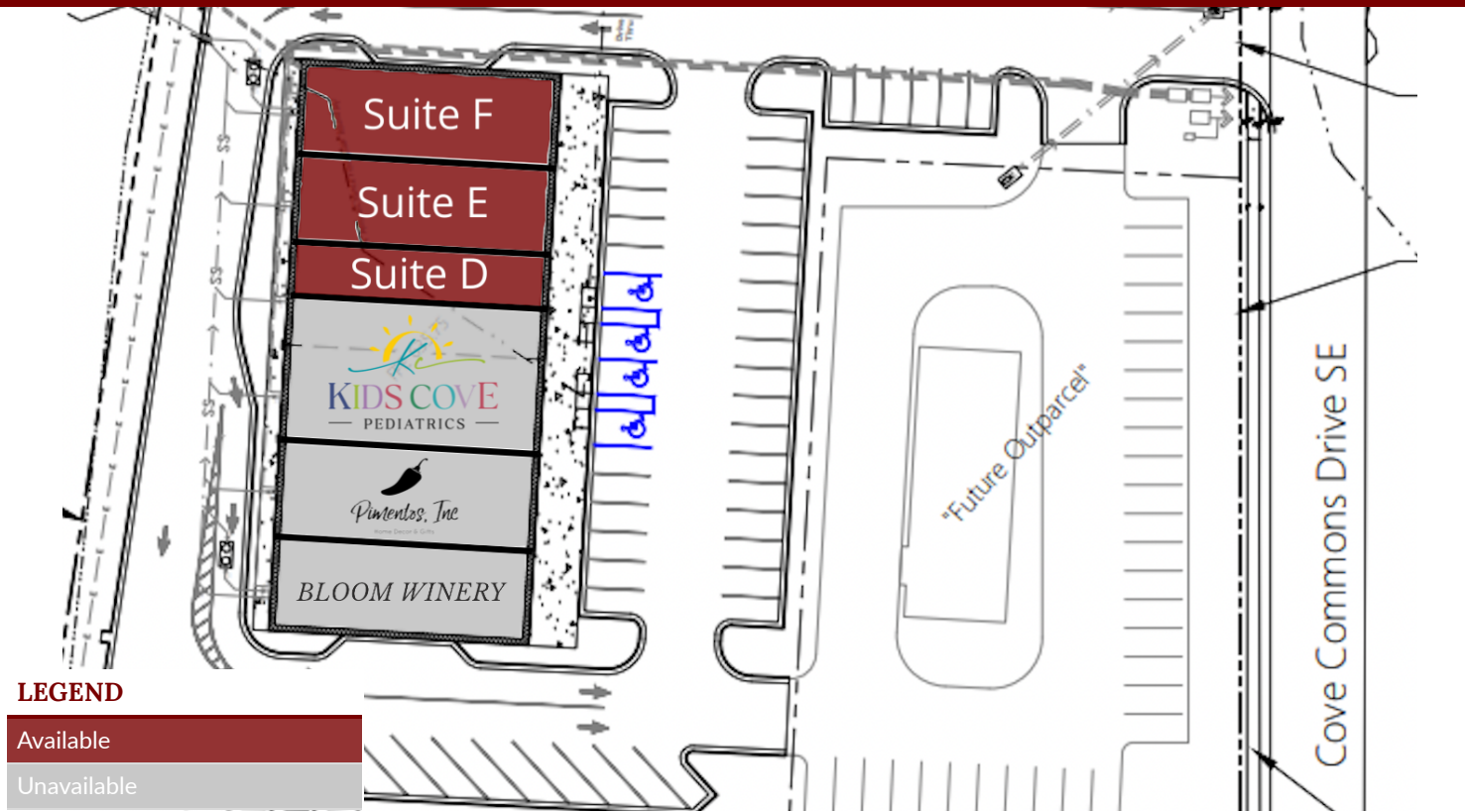
Associate Broker
256.353.1112
jackson@parker-realestate.com

Parker
Real Estate LLC

Cove Commons Plaza

5729 COVE COMMONS DRIVE SE | BROWNSBORO/ HAMPTON COVE, AL 35741

FOR LEASE



LEASE INFORMATION

Lease Type:	NNN	Lease Term:	Negotiable
Total Space:	1,200 - 2,400 SF	Lease Rate:	\$22.00 - \$26.00 SF/yr

AVAILABLE SPACES

SUITE	TENANT	SIZE	TYPE	RATE	DESCRIPTION
Suite A	-	2,400 SF	NNN	-	-
Suite B	Pimentos, Inc. Home Decor & Gifts	2,400 SF	NNN	-	-
Suites C	Kids Cove Pediatrics	3,600 SF	NNN	-	-
Suite D	Available	1,200 SF	NNN	\$22.00 SF/yr	-
Suite E	Available	2,400 SF	NNN	\$22.00 SF/yr	-
Suite F	Available	2,400 SF	NNN	\$26.00 SF/yr	-

Jeff Parker
 Broker
 256.353.1112
 jparker@parker-realestate.com

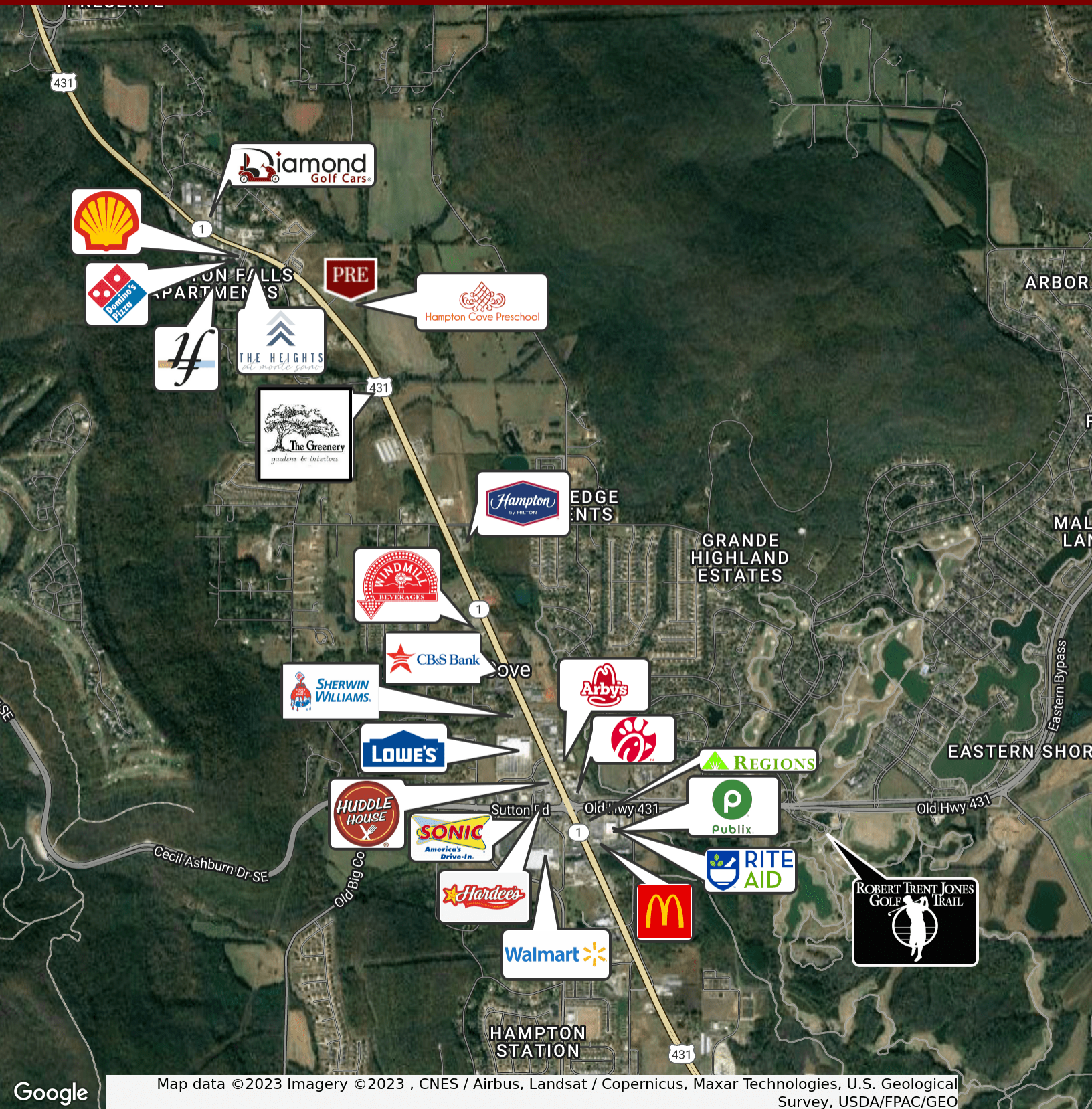
Jackson Parker
 Associate Broker
 256.353.1112
 jackson@parker-realestate.com



Cove Commons Plaza

5729 COVE COMMONS DRIVE SE | BROWNSBORO/ HAMPTON COVE, AL 35741

FOR LEASE



Google

Map data © 2023 Imagery © 2023, CNES / Airbus, Landsat / Copernicus, Maxar Technologies, U.S. Geological Survey, USDA/FPAC/GEO

Jeff Parker
Broker
256.353.1112
jparker@parker-realestate.com

Jackson Parker
Associate Broker
256.353.1112
jackson@parker-realestate.com

Parker
Real Estate