



LYNCH LEGACY

COMMERCIAL

OAKY LANDING

Hudson Oaks, TX

OAKY TRAIL | HIGH VISIBILITY | MULTI-TENANT RETAIL DEVELOPMENT

FOR LEASE



- PLANNED MULTI-TENANT RETAIL STRIP
- LOCATED IN THE AFFLUENT, SUBURB OF HUDSON OAKS
- CALL FOR PRICING: BASE RATE NNN

exp
REALTY

STACY LYNCH

817.908.9567

stacy@lynchlegacyexp.com



STEPHANIE RICH

817.304.5939

stephanie@lynchlegacyexp.com



LYNCH LEGACY
COMMERCIAL


Oakey Landing


Hudson Oaks, TX

Oakey Trail | High Visibility | Multi-Tenant Retail Development


PROPERTY INFORMATION

A NEW RETAIL TENANT BLDG:
Oakey Trail
Hudson Oaks, TX 76087





INGRAM DESIGN
ARCHITECTURAL &
ENGINEERING
SERVICES
817.845.2352



PRELIM SITE MAP



AERIAL VIEW

INDEX OF DRAWINGS

- 001 COVER SHEET
- 010 PRELIMINARY SITE PLAN
- 020 FLOOR PLAN
- 030 SPREAD PLAN
- 040 OUTLINED FLOOR PLAN
- 050 EXTERIOR ELEVATIONS
- 060 EXTERIOR ELEVATIONS
- 070 ROOF PLAN
- 080 BALANCE SECTION
- 090 WINDOW SECTION
- 100 WALL SECTION
- 110 WALL SECTION
- 120 SIGN / SIGNAGE / FRESH SIGNAGE
- 130 REVISIONS SHEET

SQUARE FOOTAGES

NET/NO. BLDG. _____ 15,000
 FLOOR/NO. _____ 15,000
 PARKING _____ 8,000
 LANDSCAPING _____ 8,000
 TOTAL, HARD SQUARE FOOTAGE _____ 31,000
 TOTAL, PROJECT SQUARE FOOTAGE _____

BUILDING CODES

2015 INTERNATIONAL BUILDING CODES
 2015 NATIONAL ELECTRICAL CODE
 2015 ENERGY CONSERVATION CODE
 2015 INTERNATIONAL FIRE CODE

CONTRACTOR

M2 GROUP, INC.
 1500 W. WINDYBROOK DRIVE
 WICHITA, KS 67201
 817-684-4033

ARCHITECTURAL DESIGN

INGRAM DESIGN CO.
 201 BULL BLVD., SUITE 100
 WICHITA, KS 67201
 817-845-2352
 www.ingramdesign.com

INGRAM DESIGN ARCHITECTURAL & ENGINEERING SERVICES

JONATHAN INGRAM
 JONATHAN@INGRAMDESIGN.COM
 PRELIMINARY DRAWING
 NOT FOR BIDDING,
 PERMITTING &
 CONSTRUCTION PURPOSES
 DRAWINGS DATED:
 04-26-2024
 A NEW RETAIL TENANT BLDG.
 SOUTHWEST
 RETAIL
 Oakey Trail
 HUDSON OAKS, TX 76087
A1.0

OCCUPANCY: 30%
LOCATION: 3017 Oakey Trail, Hudson Oaks
BUILDING SIZE: 15,000 SQFT
BUILDING USE: Multi-Tenant Retail Development
UTILITIES: City Sewer, City Water
CONSTRUCTION: Stone & Brick
PARKING: Open



STACY LYNCH
817.908.9567
stacy@lynchlegacyexp.com



STEPHANIE RICH
817.304.5939
stephanie@lynchlegacyexp.com



LYNCH LEGACY

COMMERCIAL

OAKLEY LANDING

Hudson Oaks, TX

OAKLEY TRAIL | HIGH VISIBILITY | MULTI-TENANT RETAIL DEVELOPMENT

PROPERTY LOCATION



- ★ HIGH VISIBILITY
- ★ EASY ACCESS TO 2 HIGHWAYS



PROXIMITIES

- ★ 10 Minutes to Weatherford
- ★ 15 Minutes to Fort Worth
- ★ 25 Minutes to Alliance
- ★ 35 Minutes to DFW Airport



STACY LYNCH

817.908.9567

stacy@lynchlegacyexp.com



STEPHANIE RICH

817.304.5939

stephanie@lynchlegacyexp.com



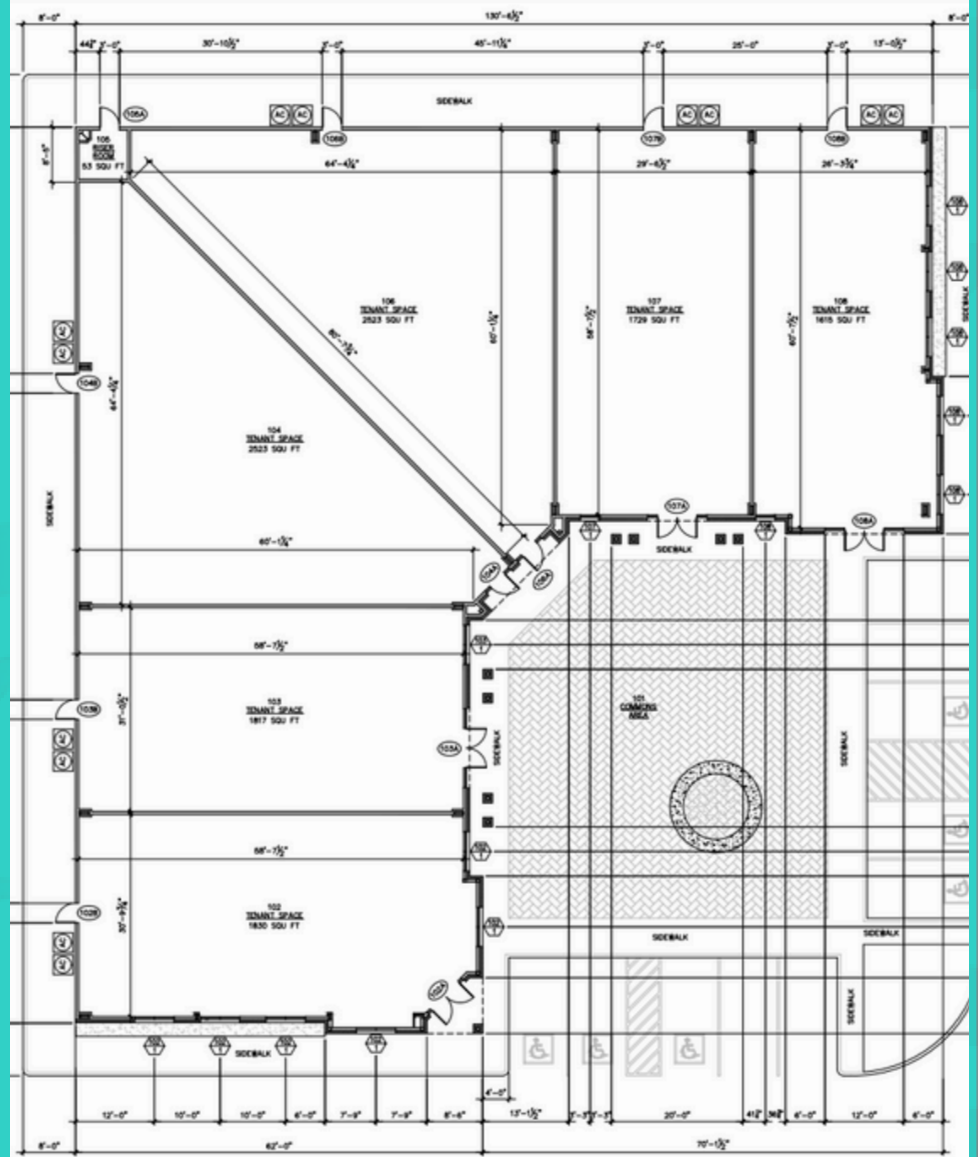
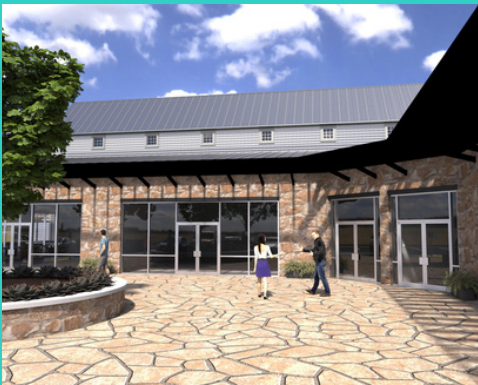
LYNCH LEGACY
COMMERCIAL

OAKLEY LANDING

Hudson Oaks, TX

OAKLEY TRAIL | HIGH VISIBILITY | MULTI-TENANT RETAIL DEVELOPMENT

PROPERTY PHOTOS



STACY LYNCH
817.908.9567
stacy@lynchlegacyexp.com



STEPHANIE RICH
817.304.5939
stephanie@lynchlegacyexp.com





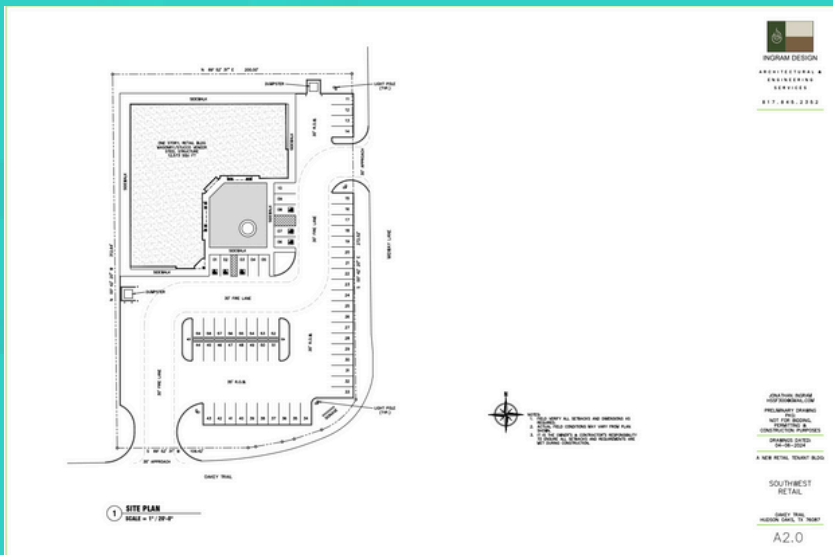
LYNCH LEGACY
COMMERICAL

OAKLEY TRAIL

Hudson Oaks, TX

OAKLEY TRAIL | HIGH VISIBILITY | MULTI-TENANT RETAIL DEVELOPMENT

PROPERTY PHOTOS



STACY LYNCH
817.908.9567
stacy@lynchlegacyexp.com



STEPHANIE RICH
817.304.5939
stephanie@lynchlegacyexp.com





LYNCH LEGACY

COMMERCIAL

OAKLEY LANDING

Hudson Oaks, TX

OAKLEY TRAIL | HIGH VISIBILITY | MULTI-TENANT RETAIL DEVELOPMENT



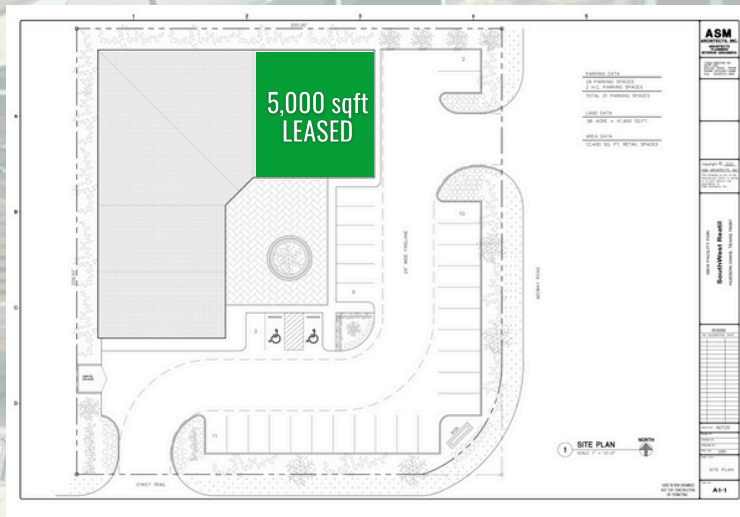
TENANT PROFILES

BirdieBay

BirdieBay started with a single passion – Golf. The idea was conceived when co-founder Keaton was living in South Korea. He was used to spending 4–6 hours on a golf outing. However, in South Korea, where indoor golf venues outnumbered coffee shops, he could play 18 holes in less than an hour.

Eventually when Keaton moved back home to Tulsa in 2020, he mentioned his indoor golf experience to his brother Kennedy, who immediately latched on to the idea. Finally in 2022, they put together a plan and came up with a name, “BirdieBay”. Things took off when they met Alex, who at the time was finishing up college. He believed in the idea of BirdieBay and was brought on as an equal partner in the venture.

www.birdiebay.com



STACY LYNCH

817.908.9567

stacy@lynchlegacyexp.com



STEPHANIE RICH

817.304.5939

stephanie@lynchlegacyexp.com



LYNCH LEGACY
COMMERCIAL

THE LEGACY COMMERCIAL TEAM



Stacy Lynch
Broker Associate
Lynch Legacy Realty Group

Stacy is a professional broker with 39 years of experience leading our team. A resident of Parker County for 50+ years and proud Aledo High School graduate, she has a true passion for this area. Stacy is rooted in relationships, both professional and personal. Her knowledge of Parker County and the school districts in the area stems from her history with her family's 50+ year old Parker County Real Estate Company. Stacy's parents Roy and Jan Lynch started the company in 1972.

Stacy proudly serves as the Chairman of Board on the East Parker County Economic Development Committee and also the Branch to Hope Community Center.



Stephanie Rich
REALTOR®
Lynch Legacy Realty Group

Stephanie is an adventurous, fun-loving soul. Her dedication and commitment, paired with her down to earth personality, make her perfect for our team here at Lynch Legacy. She hails from the "Sooner State" up north of here, but she found her place right here in Parker County as quick as she could.

In her spare time she is obviously a big Oklahoma Sooners fan and loves catching a game when the opportunity presents itself. Her hobbies include shopping, cooking, and spending as much time by the lake as the weather allows. Her favorite thing about Parker County? "The people here- their pride in community, family and country" .

EXPERTISE IN EVERY BRANCH

We Live Here, Work Here, Play Here.



STACY LYNCH
817.908.9567
stacy@lynchlegacyexp.com



STEPHANIE RICH
817.304.5939
stephanie@lynchlegacyexp.com