

2881 & 2871 E. Grand Blvd, Detroit, MI 48202

LEASE AVAILABILITY - 9943 SF TOTAL - 5 (+/-) Retail Tenant Spaces



DETROIT  
DESIGN  
DISTRICT



METHOD  
DEVELOPMENT

**LINO**  
REALTY INC.

LEASING : Michael Scamardella - Lino Realty | [michael@linorealty.com](mailto:michael@linorealty.com) | 586-260-6379

2881 & 2871 E. Grand Blvd, Detroit, MI 48202

LEASE AVAILABILITY - 9943 SF TOTAL - 5 (+/-) Retail Tenant Spaces



The exciting new retail development at 2881 & 2871 E. Grand Blvd (Corner of E. Grand Blvd. and St. Antoine) represents a perfect opportunity to take address in the historic Milwaukee Junction neighborhood of Detroit and become a part of the special Detroit Design District community of entrepreneurs, makers and innovators.

Conceptualized as 5 tenant spaces with a courtyard at the center and a pedestrian alley, the sophisticated developers at Method Development are open to exploring and delivering alternate space configurations.

Ideal home for an assortment of retailers, creative offices and restaurant / bar and other food & beverage tenants.





# 2881 & 2871 E. Grand Blvd, Detroit, MI 48202

## SITE PLAN (CONCEPTUAL)

1. TENANT 1 - 2600 SF
2. TENANT 2 - 2512 SF
3. TENANT 3 - 1011 SF
4. TENANT 4 - 2364 SF
5. TENANT 5 - 1456 SF
6. COURTYARD
7. PEDESTRIAN ALLEY

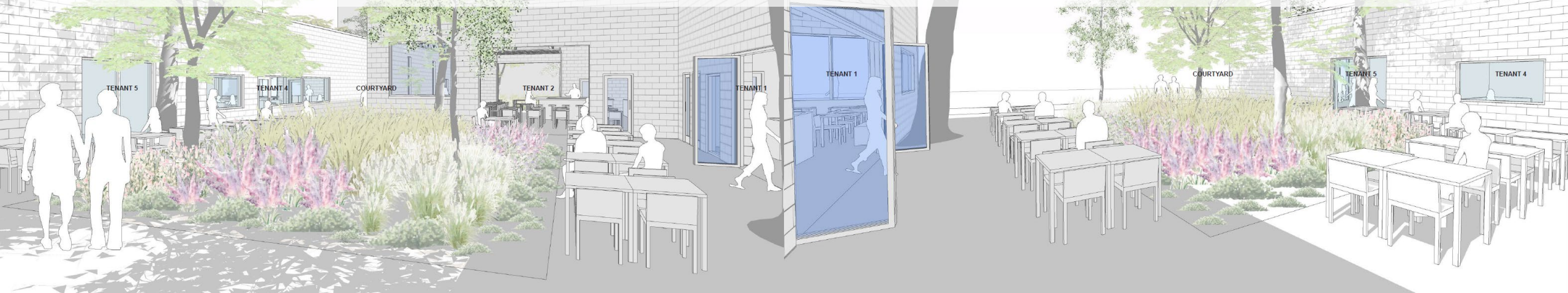
TOTAL SF - 9943 SF





2881 & 2871 E. Grand Blvd, Detroit, MI 48202

LEASE AVAILABILITY - 9943 SF TOTAL - 5 (+/-) Retail Tenant Spaces



Exterior Perspectives : Courtyard



# REFERENCE AERIAL



2881 & 2871  
E. Grand Blvd



EAST GRAND BOULEVARD







# MILWAUKEE JUNCTION

Where Detroit's automotive revolution took root — home to the factories and minds that shaped the global auto industry. It was here that the Ford Model T was first built, where steel frames replaced wooden carriages, and assembly line production was born — permanently altering global industrial manufacturing as civilization knew it.

Decades later, the Junction gave rise to another global movement as the birthplace of **Techno** music, pushing boundaries in an entirely new creative direction.

Today, that same spirit of invention pulses through the neighborhood, fueling a new generation of innovators across design, music, art, and industry. From steel to sound, Milwaukee Junction is where bold ideas come to life.

The area has seen tremendous growth over the years and is uniquely situated to see expansion into all realms including residential, industry, dining, and retail.



# 2881 & 2871 E. Grand Blvd, Detroit, MI 48202

## LEASE AVAILABILITY - 9943 SF TOTAL - 5 (+/-) Retail Tenant Spaces

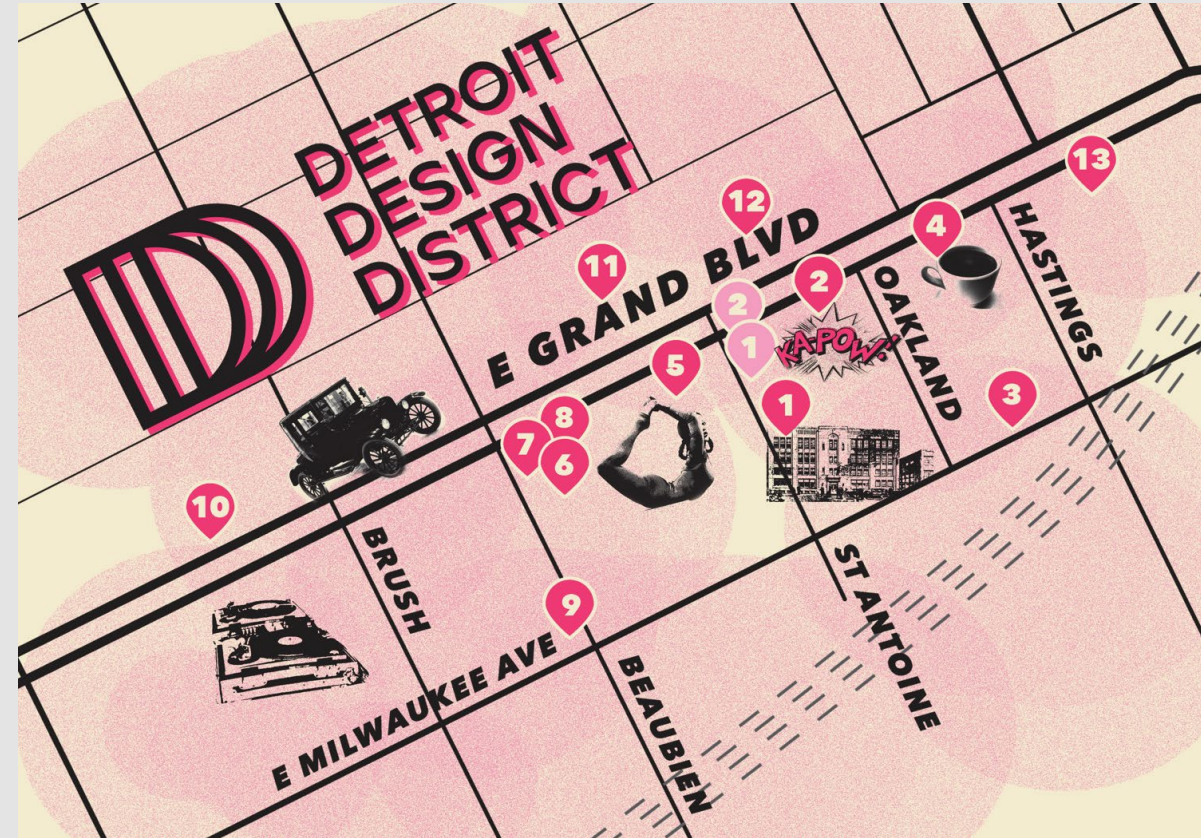


# DETROIT DESIGN DISTRICT

*DDD BUSINESSES (1) Boyer-Campbell Building (2) Vault of Midnight, Someday, Method Development, BULK Space (3) Tangent Gallery (4) Sepia Coffee (5) HOT BONES (6) Oak & Reel (7) Freya (8) The Upright (9) Kiesling (10) Exhibit 3000, Techno Museum (11) Jam Handy (12) Office Space Gallery (13) Vanguard*  
*DDD MURALS (1) Tony Whlgn (2) Tylon J. Sawyer*

Detroit Design District is a neighborhood of creative entrepreneurs, artists, and makers. Located in the heart of Detroit's historic Milwaukee Junction, the District is rooted in centuries of innovation, from the Model T to techno music. Together, DDD community members, nonprofits, and businesses cultivate a welcoming and energizing environment where creatives thrive and visitors from around the globe find inspiration.

**[DDD@METHODEVELOP.COM](mailto:DDD@METHODEVELOP.COM) | 2857 E. GRAND BLVD., DETROIT, MI 48202**



DETROIT  
DESIGN  
DISTRICT



**LINO**  
REALTY INC.

For additional LEASE information  
or to schedule a call or site visit

CONTACT:  
MICHAEL SCAMARDELLA  
LEASING DIRECTOR

# LINO

REALTY INC.

o. 586-263-5111 ext. 102  
c. 586-260-6379  
e. [michael@linorealty.com](mailto:michael@linorealty.com)

