

# Diamond Point in Silverstone Park

2041 S. COBALT POINT WAY, MERIDIAN, ID 83642



## PROPERTY FEATURES

BLDG TYPE: Office  
BLDG SIZE: 70,014 Square Feet  
FLOORS: Two (2) Floors  
PARKING: 5.3/1,000 SF Leased  
LEASE TYPE: Full Service, Less Tenant Janitorial  
ZONING: CC

## BUILDING HIGHLIGHTS

- Centrally located in the Boise Valley, I-84 (Exit 46) less than one mile
- Professional Silverstone Park, provides service and food amenities
- Private entry into tenant space
- Excellent building signage available
- Generous parking included
- Proportionate use of Silverstone Amenity Center five (5) meeting and board rooms

## AVAILABLE SPACES

Divisible call to discuss options  
21,929 RSF 2nd Floor (divisible)  
35,007 RSF 1st Floor (divisible)  
56,936 AVAILABLE

## LOCATED **SILVERSTONE**



**Call: 208-322-7300**

[WWW.SUNDANCECO.COM](http://WWW.SUNDANCECO.COM)



# Diamond Point in Silverstone Park

2041 S. COBALT POINT WAY, MERIDIAN, ID 83642



**Call: 208-322-7300**

[WWW.SUNDANCECO.COM](http://WWW.SUNDANCECO.COM)





# Diamond Point in Silverstone Park

2041 S. COBALT POINT WAY, MERIDIAN, ID 83642



---

**Call: 208-322-7300**

[WWW.SUNDANCECO.COM](http://WWW.SUNDANCECO.COM)



# Diamond Point in Silverstone Park

2041 S. COBALT POINT WAY, MERIDIAN, ID 83642

Silverstone Park provides abundant access points which substantially affects ease of access to and from your business. This development is nearly completely built out and you will find excellent internal traffic flow for employees and visitors.

## SILVERSTONE PARK

Eleven (11) Traffic Outlets

Two (2) Traffic Light Controlled



**Call: 208-322-7300**

[WWW.SUNDANCECO.COM](http://WWW.SUNDANCECO.COM)

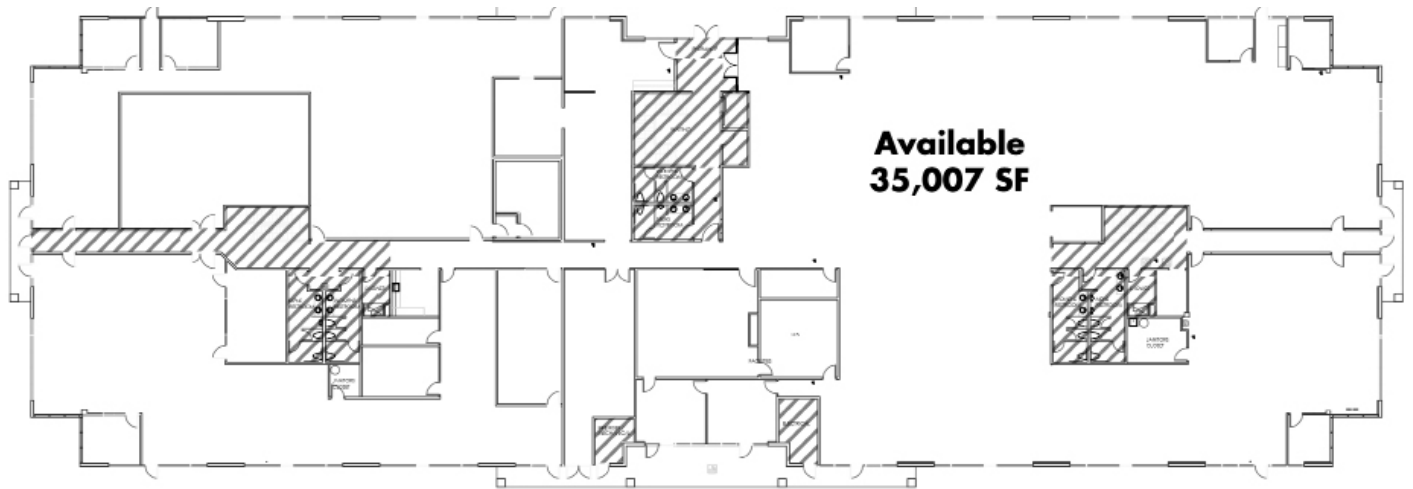




# Diamond Point in Silverstone Park

2041 S. COBALT POINT WAY, MERIDIAN, ID 83642

1st Floor  
35,007 RSF



1st Floor  
Various Demise Options Available. Contact us to customize a floor plan.



**Call: 208-322-7300**

[WWW.SUNDANCECO.COM](http://WWW.SUNDANCECO.COM)



# Diamond Point in Silverstone Park

2041 S. COBALT POINT WAY, MERIDIAN, ID 83642

2nd Floor

21,929 RSF

Divisible to approx 10,000 SF



2nd Floor

Various Demise Options Available. Contact us to customize a floor plan.



**Call: 208-322-7300**

[WWW.SUNDANCECO.COM](http://WWW.SUNDANCECO.COM)

