

Property For Sale

111 Lafayette Avenue, White Plains NY 10603

111 Lafayette Avenue White Plains, NY 10603



For More Information:

**MARIA LEBER**

Licensed Real Estate Salesperson  
Douglas Elliman Commercial - Long Island  
631.858.2462  
maria.leber@elliman.com

 **Douglas Elliman**  
Commercial

[WWW.ELLIMANCOMMERCIAL.COM](http://WWW.ELLIMANCOMMERCIAL.COM)

THE PROPERTY CONTAINED WITHIN THIS DOCUMENT IS BEING EXCLUSIVELY REPRESENTED BY DOUGLAS ELLIMAN REAL ESTATE COMMERCIAL DIVISION, 650 SMITHTOWN BYPASS STE. 117 SMITHTOWN, NY 11787 631 858 2405 © 2023 DOUGLAS ELLIMAN COMMERCIAL OF LI, LLC. ALL MATERIAL PRESENTED HEREIN IS INTENDED FOR INFORMATION PURPOSES ONLY. WHILE THIS INFORMATION IS BELIEVED TO BE CORRECT, IT IS REPRESENTED SUBJECT TO ERRORS, OMISSIONS, CHANGES OR WITHDRAWAL WITHOUT NOTICE. ALL PROPERTY INFORMATION, INCLUDING, BUT NOT LIMITED TO SQUARE FOOTAGE, ROOM COUNT, ZONING IN THE LISTING SHOULD BE VERIFIED BY YOUR OWN ATTORNEY, ARCHITECT OR ZONING EXPERT. IF YOUR PROPERTY IS CURRENTLY LISTED WITH ANOTHER REAL ESTATE BROKER, PLEASE DISREGARD THIS OFFER. IT IS NOT OUR INTENTION TO SOLICIT THE OFFERINGS OF OTHER REAL ESTATE BROKERS. WE COOPERATE WITH THEM FULLY. EQUAL HOUSING OPPORTUNITY.



# Industrial Property For Sale

## 111 Lafayette Avenue White Plains, NY 10603



### Offering Summary

<b>Asking Price:</b>	Price Upon Request
<b>Building Size:</b>	20,000 SF
<b>Township</b>	North Castle
<b>Lot Size:</b>	0.75 Acres
<b>Zoning:</b>	Industrial A

### Property Overview

Prime industrial flex opportunity at 111 Lafayette Avenue, White Plains, NY. This expansive 20,000 SF building, zoned IND-A, is a standout investment for industrial, warehouse, and distribution ventures. With a strategic location in the thriving White Plains area, this property offers ample space for operations and growth. Boasting versatile functionality, this property is perfectly suited for a wide range of industrial purposes. Don't miss this chance to secure a key position in the heart of a dynamic industrial landscape.

### Property Highlights

- 20,000 SF industrial building
- 2 Loading Docks; 1 Drive-in Bay
- 1 Freight Elevator
- Covered outside storage
- Prime location in White Plains area
- Suitable for warehouse and distribution operations
- Ample space for equipment and inventory

For More Information:

**MARIA LEBER**

Licensed Real Estate Salesperson  
 Douglas Elliman Commercial - Long Island  
 631.858.2462  
 maria.leber@elliman.com



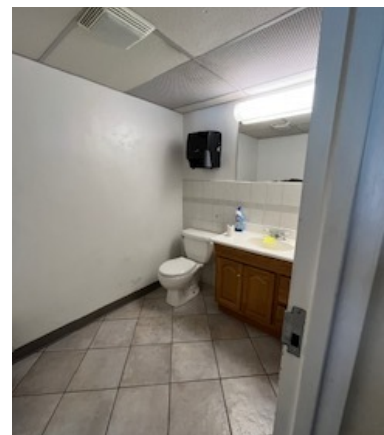
[WWW.ELLIMANCOMMERCIAL.COM](http://WWW.ELLIMANCOMMERCIAL.COM)

THE PROPERTY CONTAINED WITHIN THIS DOCUMENT IS BEING EXCLUSIVELY REPRESENTED BY DOUGLAS ELLIMAN REAL ESTATE COMMERCIAL DIVISION, 550 SMITHTOWN BYPASS STE. 117 SMITHTOWN, NY 11787 631.858.2405 © 2023 DOUGLAS ELLIMAN COMMERCIAL OF LI, LLC. ALL MATERIAL PRESENTED HEREIN IS INTENDED FOR INFORMATION PURPOSES ONLY. WHILE THIS INFORMATION IS BELIEVED TO BE CORRECT, IT IS REPRESENTED SUBJECT TO ERRORS, OMISSIONS, CHANGES OR WITHDRAWAL WITHOUT NOTICE. ALL PROPERTY INFORMATION, INCLUDING, BUT NOT LIMITED TO SQUARE FOOTAGE, ROOM COUNT, ZONING IN THE LISTING SHOULD BE VERIFIED BY YOUR OWN ATTORNEY, ARCHITECT OR ZONING EXPERT. IF YOUR PROPERTY IS CURRENTLY LISTED WITH ANOTHER REAL ESTATE BROKER, PLEASE DISREGARD THIS OFFER. IT IS NOT OUR INTENTION TO SOLICIT THE OFFERINGS OF OTHER REAL ESTATE BROKERS. WE COOPERATE WITH THEM FULLY. EQUAL HOUSING OPPORTUNITY.



# Industrial Property For Sale

## 111 Lafayette Avenue White Plains, NY 10603



For More Information:

**MARIA LEBER**

Licensed Real Estate Salesperson  
Douglas Elliman Commercial - Long Island  
631.858.2462  
maria.leber@elliman.com

 **Douglas Elliman**  
Commercial

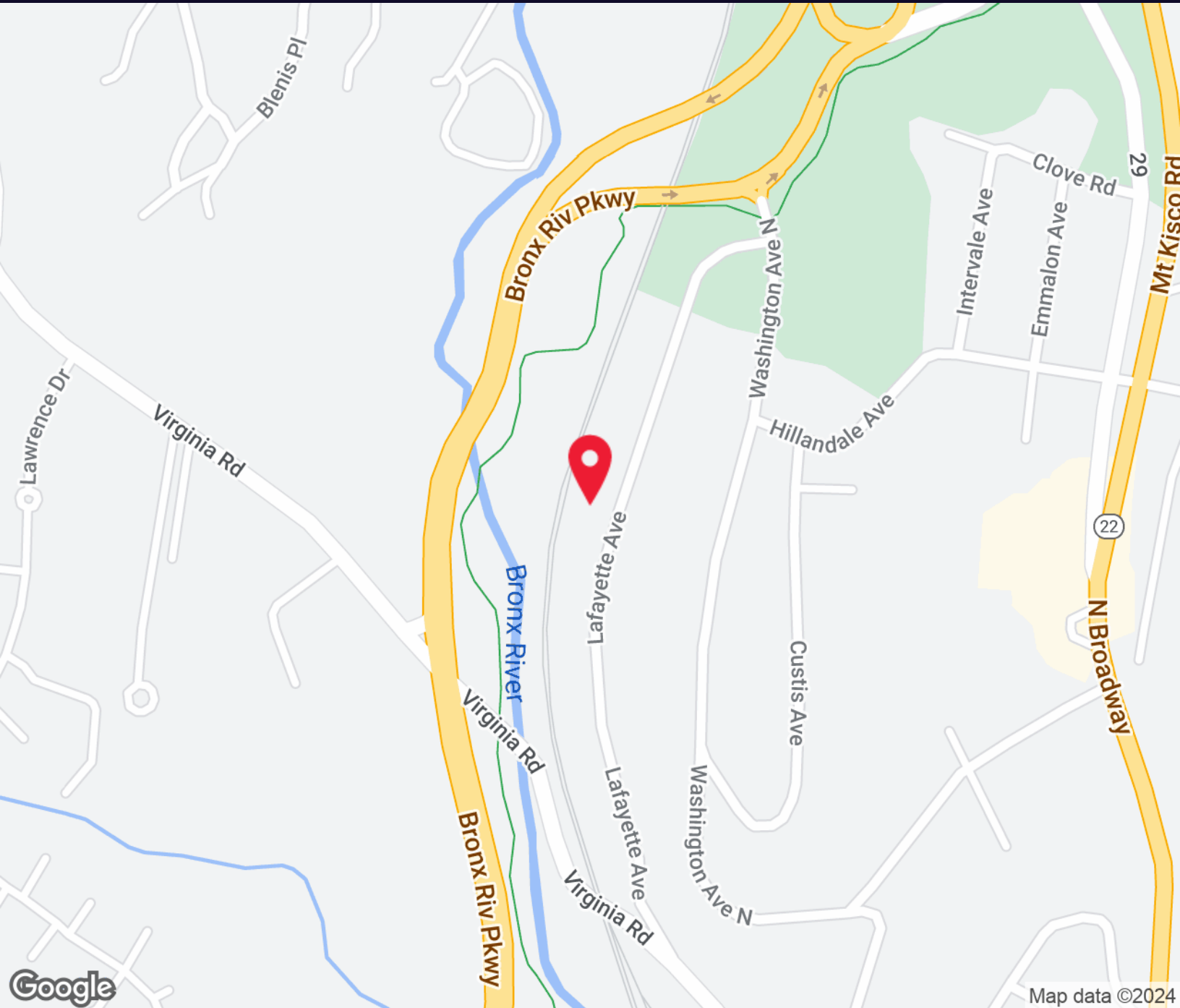
[WWW.ELLIMANCOMMERCIAL.COM](http://WWW.ELLIMANCOMMERCIAL.COM)

THE PROPERTY CONTAINED WITHIN THIS DOCUMENT IS BEING EXCLUSIVELY REPRESENTED BY DOUGLAS ELLIMAN REAL ESTATE COMMERCIAL DIVISION, 550 SMITHTOWN BYPASS STE. 117 SMITHTOWN, NY 11787 631.858.2405 © 2023 DOUGLAS ELLIMAN COMMERCIAL OF LI, L.L.C. ALL MATERIAL PRESENTED HEREIN IS INTENDED FOR INFORMATION PURPOSES ONLY. WHILE THIS INFORMATION IS BELIEVED TO BE CORRECT, IT IS REPRESENTED SUBJECT TO ERRORS, OMISSIONS, CHANGES OR WITHDRAWAL WITHOUT NOTICE. ALL PROPERTY INFORMATION, INCLUDING, BUT NOT LIMITED TO SQUARE FOOTAGE, ROOM COUNT, ZONING IN THE LISTING SHOULD BE VERIFIED BY YOUR OWN ATTORNEY, ARCHITECT OR ZONING EXPERT. IF YOUR PROPERTY IS CURRENTLY LISTED WITH ANOTHER REAL ESTATE BROKER, PLEASE DISREGARD THIS OFFER. IT IS NOT OUR INTENTION TO SOLICIT THE OFFERINGS OF OTHER REAL ESTATE BROKERS. WE COOPERATE WITH THEM FULLY. EQUAL HOUSING OPPORTUNITY.



# Industrial Property For Sale

111 Lafayette Avenue White Plains, NY 10603



For More Information:

**MARIA LEBER**

Licensed Real Estate Salesperson  
Douglas Elliman Commercial - Long Island  
631.858.2462  
maria.leber@elliman.com



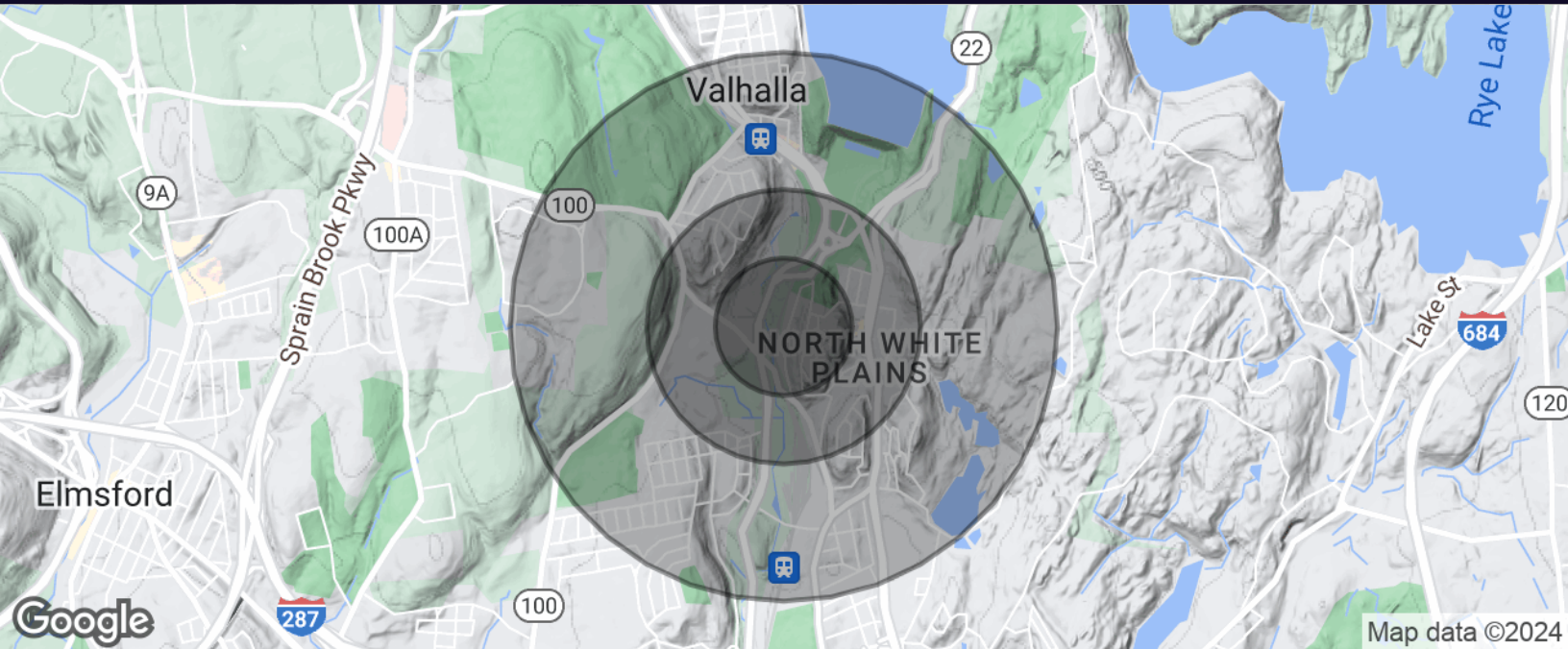
[WWW.ELLIMANCOMMERCIAL.COM](http://WWW.ELLIMANCOMMERCIAL.COM)

THE PROPERTY CONTAINED WITHIN THIS DOCUMENT IS BEING EXCLUSIVELY REPRESENTED BY DOUGLAS ELLIMAN REAL ESTATE COMMERCIAL DIVISION, 550 SMITHTOWN BYPASS STE. 117 SMITHTOWN, NY 11787 631.858.2405 © 2023 DOUGLAS ELLIMAN COMMERCIAL OF LI, LLC. ALL MATERIAL PRESENTED HEREIN IS INTENDED FOR INFORMATION PURPOSES ONLY. WHILE THIS INFORMATION IS BELIEVED TO BE CORRECT, IT IS REPRESENTED SUBJECT TO ERRORS, OMISSIONS, CHANGES OR WITHDRAWAL WITHOUT NOTICE. ALL PROPERTY INFORMATION, INCLUDING, BUT NOT LIMITED TO SQUARE FOOTAGE, ROOM COUNT, ZONING IN THE LISTING SHOULD BE VERIFIED BY YOUR OWN ATTORNEY, ARCHITECT OR ZONING EXPERT. IF YOUR PROPERTY IS CURRENTLY LISTED WITH ANOTHER REAL ESTATE BROKER, PLEASE DISREGARD THIS OFFER. IT IS NOT OUR INTENTION TO SOLICIT THE OFFERINGS OF OTHER REAL ESTATE BROKERS. WE COOPERATE WITH THEM FULLY. EQUAL HOUSING OPPORTUNITY.



# Industrial Property For Sale

## 111 Lafayette Avenue White Plains, NY 10603



Population	0.25 Miles	0.5 Miles	1 Mile
Total Population	869	3,553	9,037
Average Age	39.9	40.5	41.8
Average Age (Male)	38.9	37.8	37.3
Average Age (Female)	41.5	42.8	45.2

Households & Income	0.25 Miles	0.5 Miles	1 Mile
Total Households	320	1,314	3,303
# of Persons per HH	2.7	2.7	2.7
Average HH Income	\$132,457	\$148,166	\$144,810
Average House Value	\$446,394	\$402,683	\$451,040

For More Information:

**MARIA LEBER**

Licensed Real Estate Salesperson  
Douglas Elliman Commercial - Long Island  
631.858.2462  
maria.leber@elliman.com



[WWW.ELLIMANCOMMERCIAL.COM](http://WWW.ELLIMANCOMMERCIAL.COM)

THE PROPERTY CONTAINED WITHIN THIS DOCUMENT IS BEING EXCLUSIVELY REPRESENTED BY DOUGLAS ELLIMAN REAL ESTATE COMMERCIAL DIVISION, 550 SMITHTOWN BYPASS STE. 117 SMITHTOWN, NY 11787 631.858.2405 © 2023 DOUGLAS ELLIMAN COMMERCIAL OF LI, LLC. ALL MATERIAL PRESENTED HEREIN IS INTENDED FOR INFORMATION PURPOSES ONLY. WHILE THIS INFORMATION IS BELIEVED TO BE CORRECT, IT IS REPRESENTED SUBJECT TO ERRORS, OMISSIONS, CHANGES OR WITHDRAWAL WITHOUT NOTICE. ALL PROPERTY INFORMATION, INCLUDING, BUT NOT LIMITED TO SQUARE FOOTAGE, ROOM COUNT, ZONING IN THE LISTING SHOULD BE VERIFIED BY YOUR OWN ATTORNEY, ARCHITECT OR ZONING EXPERT. IF YOUR PROPERTY IS CURRENTLY LISTED WITH ANOTHER REAL ESTATE BROKER, PLEASE DISREGARD THIS OFFER. IT IS NOT OUR INTENTION TO SOLICIT THE OFFERINGS OF OTHER REAL ESTATE BROKERS. WE COOPERATE WITH THEM FULLY. EQUAL HOUSING OPPORTUNITY.

## WE ARE COMMERCIAL REAL ESTATE

Commercial real estate involves more than just property listings. To get the most effective results, you need to partner with a company that has a full complement of services and an in-depth team of professionals to help with all of your needs. Douglas Elliman's team of commercial real estate experts is committed to unrivaled performance standards when working with tenants, investors, purchasers and owners. We represent all major property types including office, industrial, retail, apartment and land. We treat each other each assignment with commitment and focus, from a single transaction in a local market to national and multi-market assignments. We help negotiate contracts, coordinate construction and provide both property management as well as ongoing advisory service to satisfy your changing real estate needs. Our breadth of market knowledge, unprecedented network and use of innovative technology extend to all types of property transactions.

For More Information:

**MARIA LEBER**

Licensed Real Estate Salesperson

631.858.2462

[maria.leber@elliman.com](mailto:maria.leber@elliman.com)

Office: 631.858.2405

Fax: 631.543.0851

550 Smithtown Bypass

Smithtown, NY 11787