

Industrial ★ SALE & LEASE

LanCarte.com

4608 FAIRLANE AVE FORT WORTH, TX 76119



Sarah LanCarte
CCIM, SIOR
817-228-4247
sarah@lancarte.com

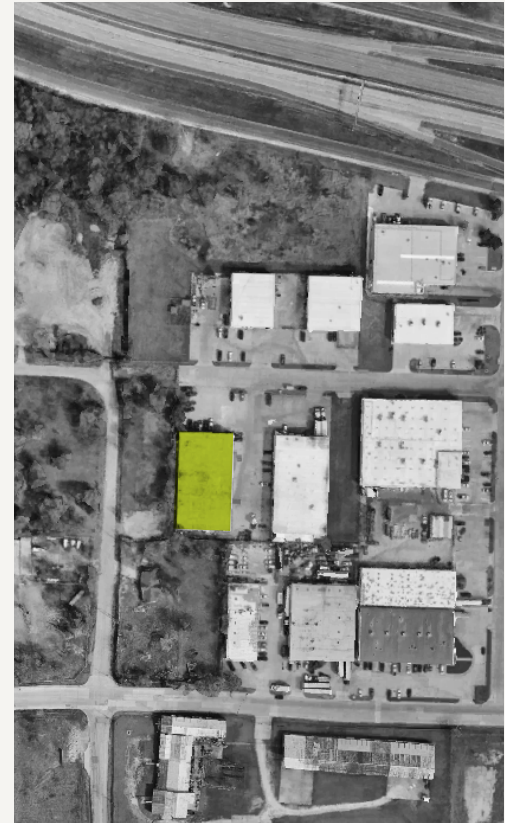
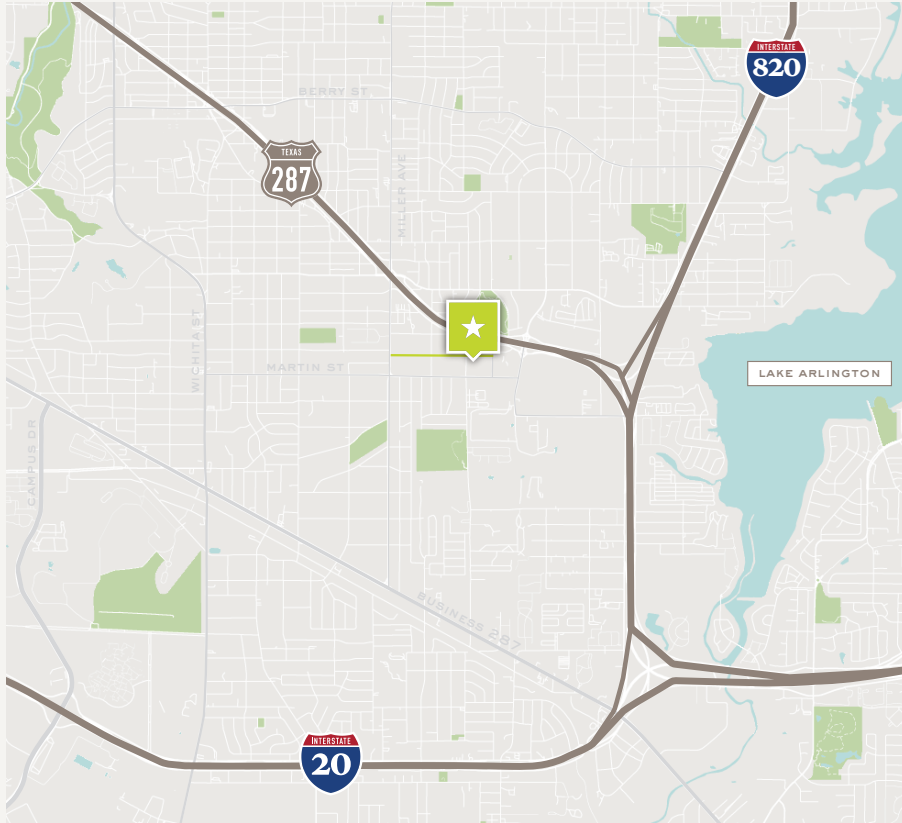
Finn Wilson
817-713-8771
fwilson@lancarte.com

Riley Dean
817-992-2362
rdean@lancarte.com

Industrial ★ SALE & LEASE

4608 FAIRLANE AVE

LanCarte.com



PROPERTY FEATURES

- 17,896 SF on 0.92 AC
- 3,780 SF Two Story Office
- Two (2) Dock High Doors with Covered Loading (15 ft)
- Five (5) 12 x 12 Grade Level Doors
- Tilt Wall Construction
- Two (2) 10 Ton Cranes
- 16' Clear Height
- Heavy Power - 600 Amp, 480 Volt
- Zoning: I-Industrial
- Warehouse Vents
- Roof Replaced in 2017

LEASE RATE & STRUCTURE

Contact Broker

LOCATION OVERVIEW

Located on Fairlane Avenue in southeast Fort Worth, this property offers easy access to major highways. Interstate 20 is just a 5-minute drive, providing east-west connectivity across the DFW Metroplex, while Interstate 820 is also 5 minutes away, offering fast loop access around Fort Worth and direct connections to north-south corridors. U.S. Highway 287 can be reached in under 8 minutes, providing a convenient route to downtown Fort Worth. This building delivers a strategic location with near-instant connections to major highways, supporting efficient operations across the Metroplex.

SALE PRICE

\$140/SF

Industrial ★ SALE & LEASE
4608 FAIRLANE AVE

LanCarte.com



Industrial ★ SALE & LEASE

4608 FAIRLANE AVE

LanCarte.com





LANCARTE
COMMERCIAL
BROKERAGE ★ PROPERTY MANAGEMENT

Relentlessly Pursuing What Matters

Sarah LanCarte
CCIM, SIOR
817-228-4247
sarah@lancarte.com

Finn Wilson
817-713-8771
fwilson@lancarte.com

Riley Dean
817-992-2362
rdean@lancarte.com