

As exclusive agents, we are pleased to offer the following space for lease:



TURTLE BAY
306
EAST 49TH ST.
Between 1st & 2nd Avenues

DETAILS

- Highly Dense Residential Neighborhood: Located Near United Nations, Grand Central Terminal and Subway
- Built in 1900
- 2nd Generation Restaurant Space
- Heavy Foot Traffic
- Direct Deal with Landlord (No Key Money)
- Asking Rent – Please Inquire
- Frontage: 25 Feet
- Term - Long Term

1ST FLOOR

- 2,000 SF
- Bar & Restaurant
- Private Back Room

BASEMENT

- 1,000 SF
- Outdoor Entryway

ARCH
BROKERAGE LTD



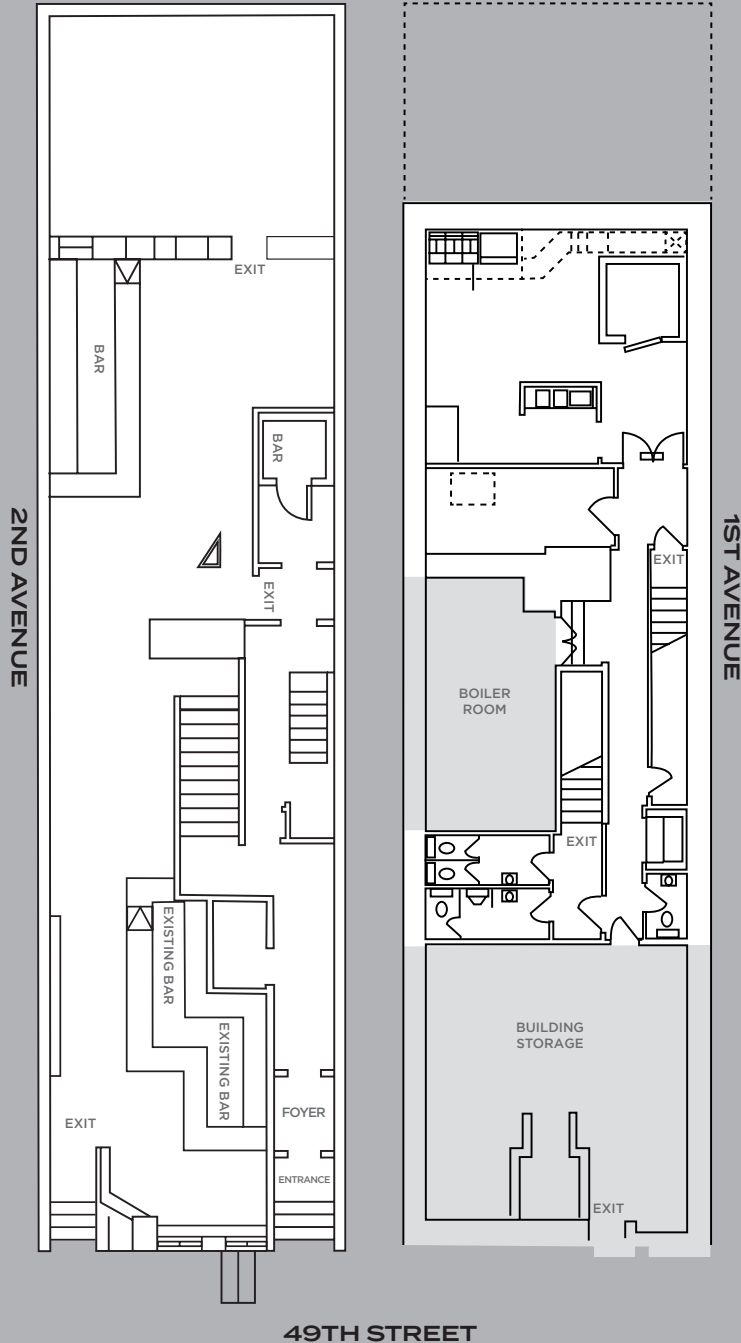
*Affiliate of
Washington Square Partners*

CONTACT:
LAURENCE ROBERTS

Real Estate Broker
Arch Brokerage Ltd.
675 Third Avenue 25th Floor
212.906.9090 ext. 210 | lroberts@archnyc.com

1ST FLOOR:
2,000 SF

BASEMENT:
1,000 SF



TURTLE BAY
306
EAST 49TH ST.
Between 1st & 2nd Avenues

The Neighborhood:
TURTLE BAY

