

# MEDICAL OFFICE SPACE AVAILABLE

115 W Main Street - Suite 102 | Boise, Idaho



Main Street Professional Building

## SPACE AVAILABLE

2,255 SF Rentable Area

## LEASE RATE

Contact Agent

## AMENITIES

- Located in Main Street Professional Building
- Ground Floor Office
- Basement Storage Available
- Easy to Find Location w/Main Street Signage
- Turnkey Medical Office Space
- High Quality Office Finish
- Short Walk to St. Luke's Hospital
- Free on-site parking at rear of building

## ON-SITE PARKING AREA



**ARTHUR BERRY  
& COMPANY**

250 W Bobwhite Court, Suite 230, Boise, Idaho 83706 208-336-8000 [www.arthurberry.com](http://www.arthurberry.com)

**Randy Limani**  
208-639-6172  
[rlimani@arthurberry.com](mailto:rlimani@arthurberry.com)

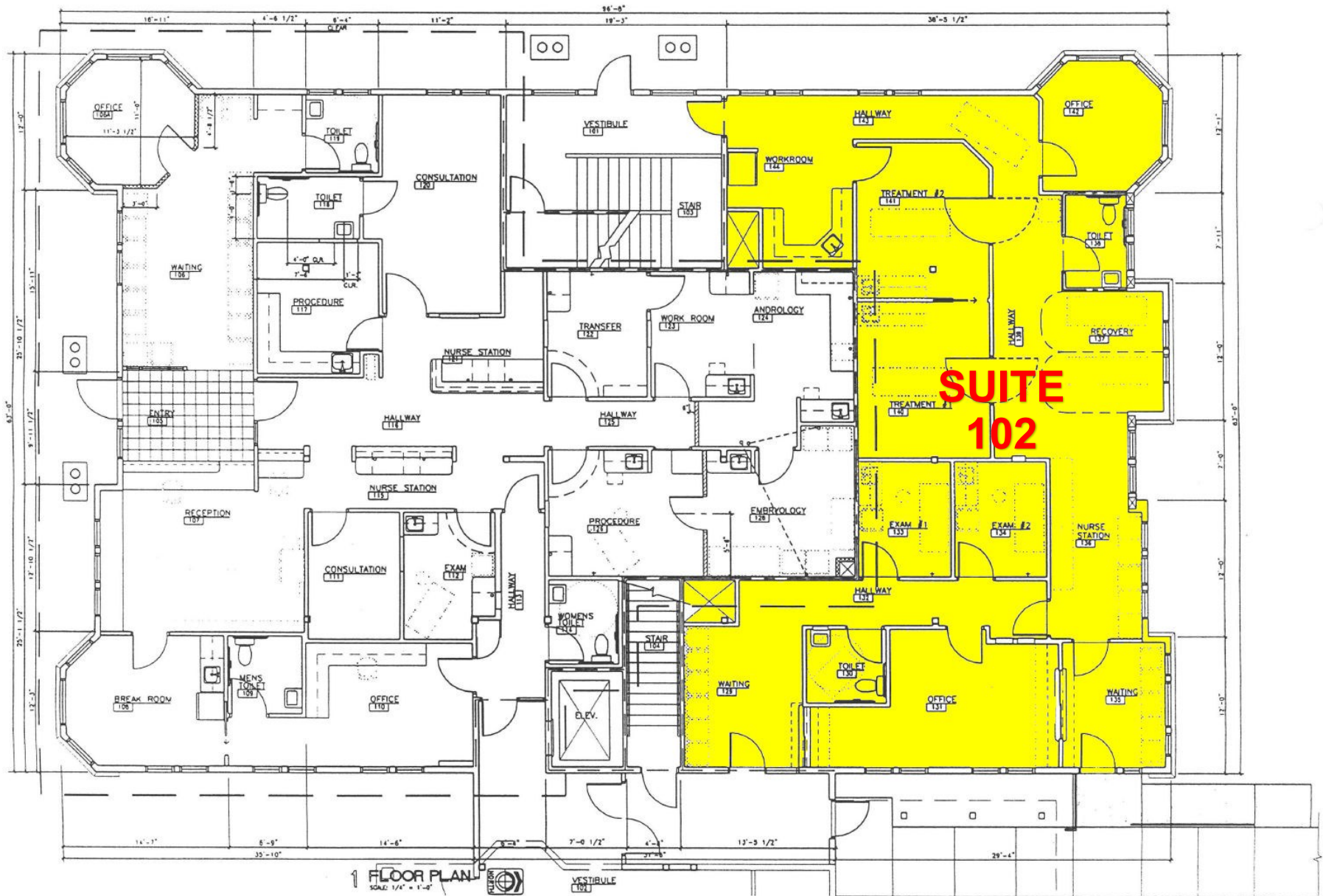
202510/28



The above is provided by the Owner. Arthur Berry & Company makes no representation as to its completeness and accuracy. Price and terms subject to change at Owner's discretion.

# MEDICAL OFFICE SPACE AVAILABLE - 115 W MAIN STREET - STE 102 | BOISE, IDAHO

## FLOOR PLAN



**ARTHUR BERRY  
& COMPANY**

250 W Bobwhite Court, Suite 230, Boise, Idaho 83706 208-336-8000 [www.arthurberry.com](http://www.arthurberry.com)

**Randy Limani**  
208-639-6172  
[rlimani@arthurberry.com](mailto:rlimani@arthurberry.com)



# MEDICAL OFFICE SPACE AVAILABLE - 115 W MAIN STREET - STE 102 | BOISE, IDAHO

## SITE MAP



**ARTHUR BERRY  
& COMPANY**

250 W Bobwhite Court, Suite 230, Boise, Idaho 83706 208-336-8000 [www.arthurberry.com](http://www.arthurberry.com)

**Randy Limani**  
208-639-6172  
[rlimani@arthurberry.com](mailto:rlimani@arthurberry.com)



The above is provided by the Owner. Arthur Berry & Company makes no representation as to its completeness and accuracy. Price and terms subject to change at Owner's discretion.