

AVAILABLE FOR SALE OR LEASE

LAND AND RETAIL SPACE ADJACENT TO NEW FAMILY DOLLAR



Columbia, SC MSA | US 176 (Whitmire Hwy), Whitmire, SC



PROPERTY FEATURES

- Adjacent to new Family Dollar
- Land - up to 4.8± AC available - subdividable - For Sale, Groundlease or BTS
- Retail Space - 8,000± SF available
- Direct frontage to US-176 (Whitmire Hwy)
- Zoned commercial
- Located in the greater Columbia, SC MSA

JOIN AREA RETAILERS

DOLLAR GENERAL

FAMILY DOLLAR



SEA PRO
the next wave

For more information, contact:

NICKI JASSY | BROKER
804 291 8557
nicki@twinriverscap.com

LAUREN A. WATKINS | ASSOCIATE
843 224 3990
lwatkins@twinriverscap.com

TWIN RIVERS CAPITAL
656 Ellis Oak Avenue, Suite 201
Charleston, SC 29412
twinriverscap.com

AVAILABLE FOR SALE OR LEASE

LAND AND RETAIL SPACE ADJACENT TO NEW FAMILY DOLLAR



Columbia, SC MSA | US 176 (Whitmire Hwy), Whitmire, SC



For more information, contact:

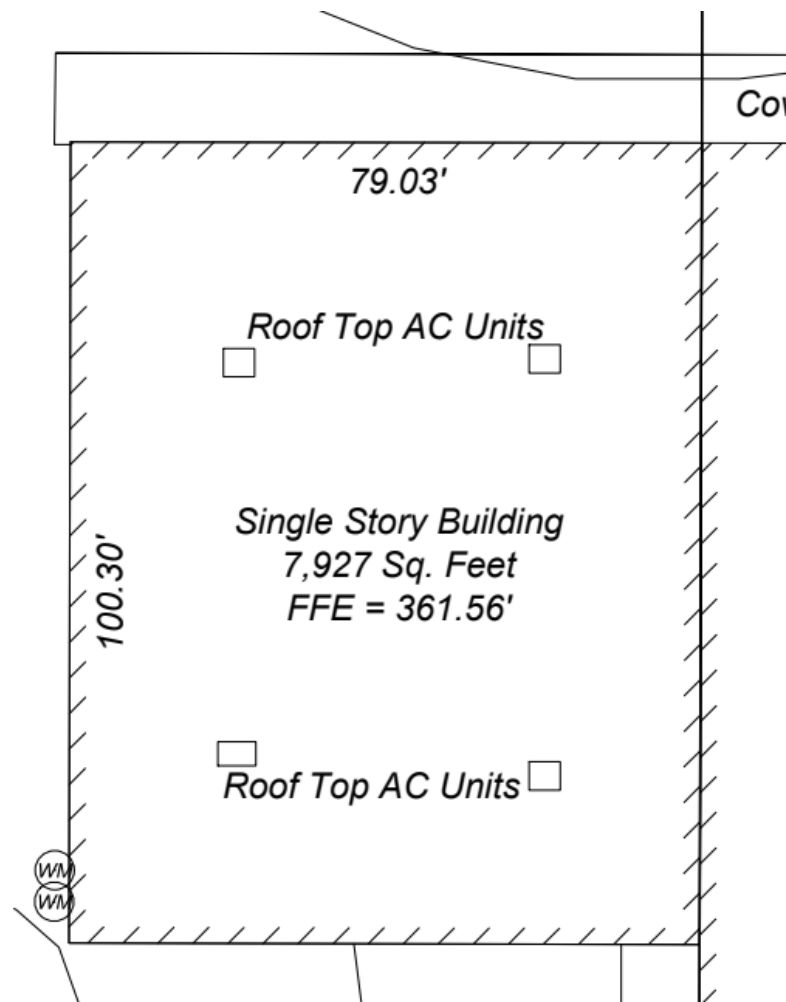
NICKI JASSY | BROKER
804 291 8557
nicki@twinriverscap.com

TWIN RIVERS CAPITAL
656 Ellis Oak Avenue, Suite 201
Charleston, SC 29412
twinriverscap.com

AVAILABLE FOR SALE OR LEASE

LAND AND RETAIL SPACE ADJACENT TO NEW FAMILY DOLLAR/DOLLAR TREE

Columbia, SC MSA | US 176 (Whitmire Hwy), Whitmire, SC



For more information, contact:

NICKI JASSY | BROKER

804 291 8557

nicki@twinriverscap.com

TWIN RIVERS CAPITAL

656 Ellis Oak Avenue, Suite 201

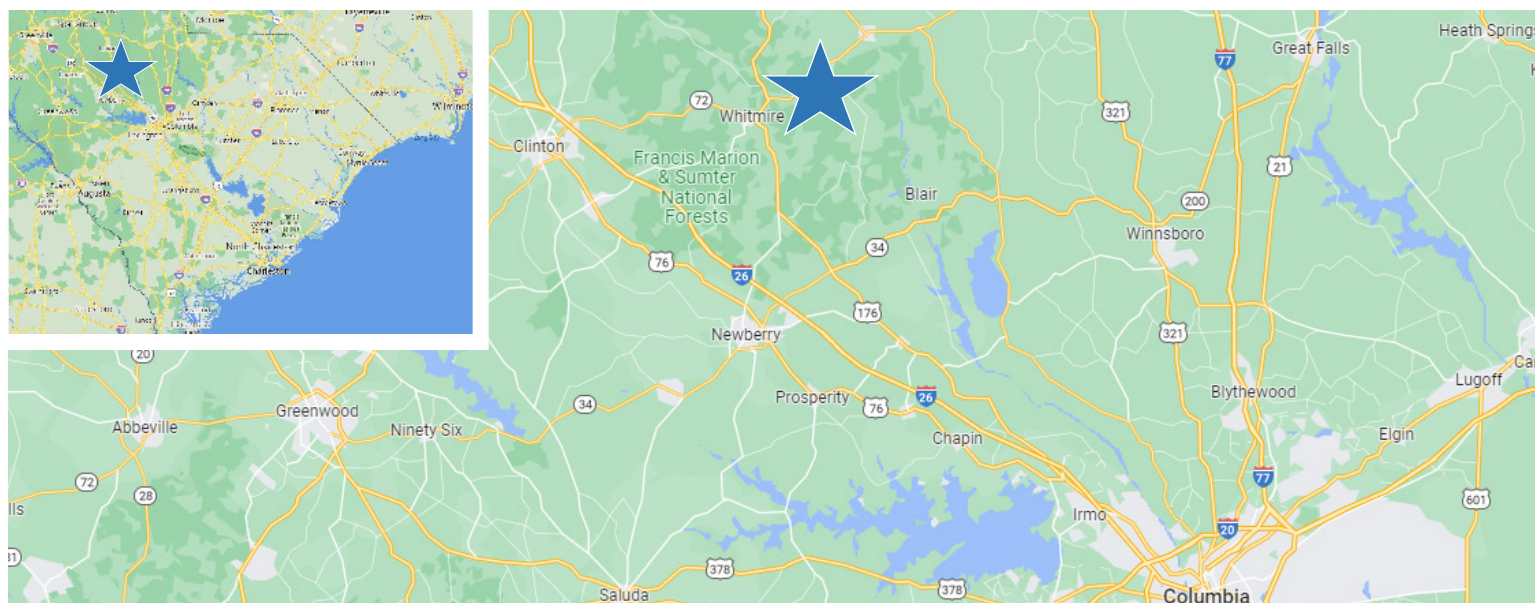
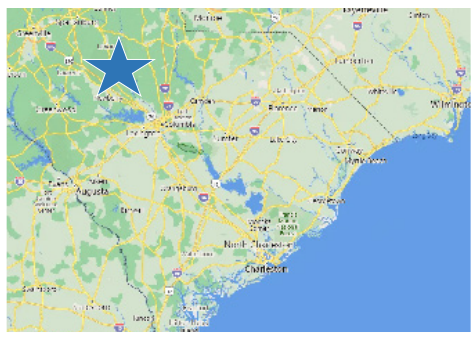
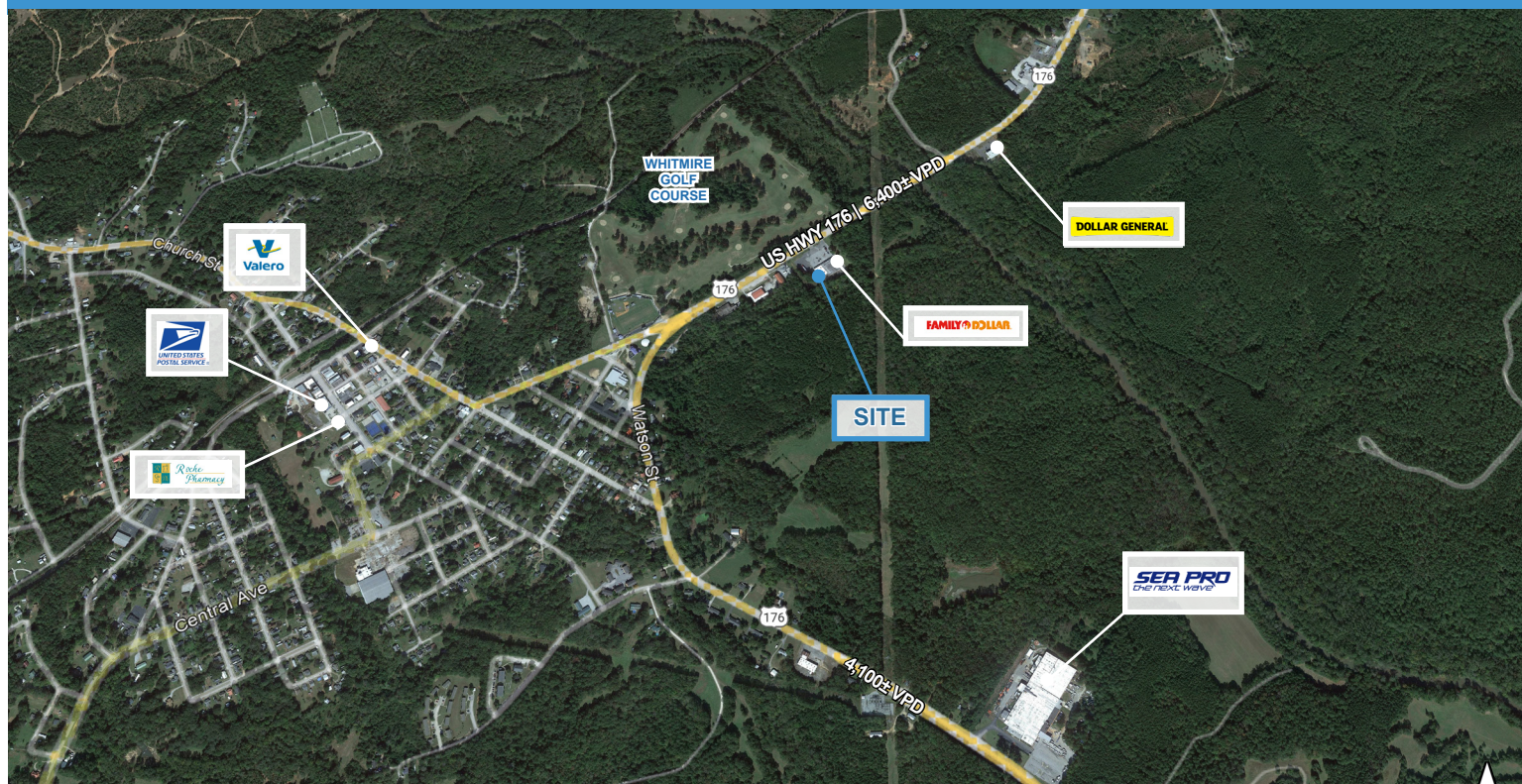
Charleston, SC 29412

twinriverscap.com

AVAILABLE FOR SALE OR LEASE

LAND AND RETAIL SPACE ADJACENT TO NEW FAMILY DOLLAR/DOLLAR TREE

Columbia, SC MSA | US 176 (Whitmire Hwy), Whitmire, SC



For more information, contact:

NICKI JASSY | BROKER
804 291 8557
nicki@twinriverscap.com

TWIN RIVERS CAPITAL
656 Ellis Oak Avenue, Suite 201
Charleston, SC 29412
twinriverscap.com

© 2025 Twin Rivers Capital, LLC. All rights reserved. This information has been obtained from sources believed reliable, but has not been verified for accuracy or completeness. You should conduct a careful, independent investigation of the property and verify all information. Any reliance on this information is solely at your own risk. Twin Rivers Capital and the Twin Rivers Capital logo are service marks of Twin Rivers Capital, LLC. All other marks displayed on this document are the property of their respective owners, and the use of such logos does not imply any affiliation with or endorsement of Twin Rivers Capital. Photos herein are the property of their respective owners. Use of these images without the express written consent of the owner is prohibited.