

4420 COMMODITY WAY

*±2,665 SF Office/Warehouse
Available For Lease*

Offered at \$3,000.00/month modified gross

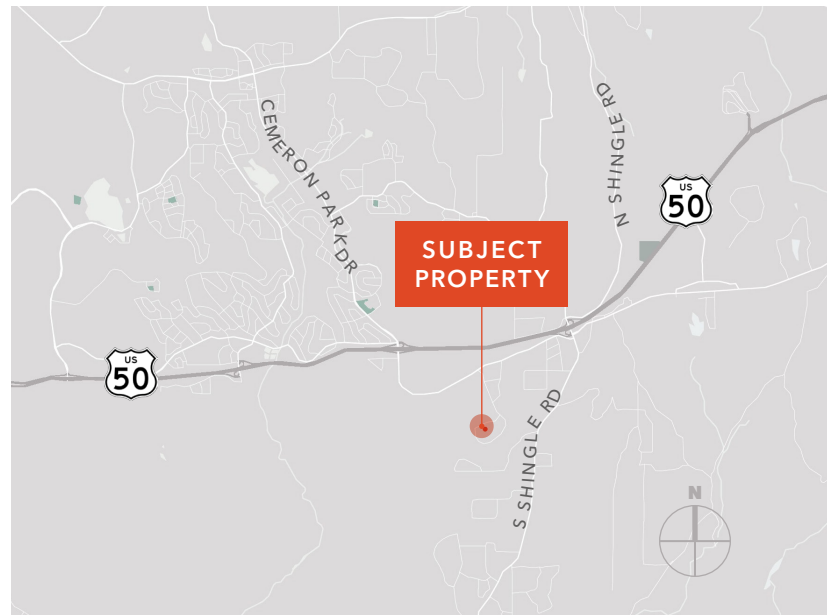
Located in Barnett Business Park

Zoned industrial

Concrete tilt construction

22' clear height

One 12'X14' grade level roll up door



TOM CONWELL

916.751.3626

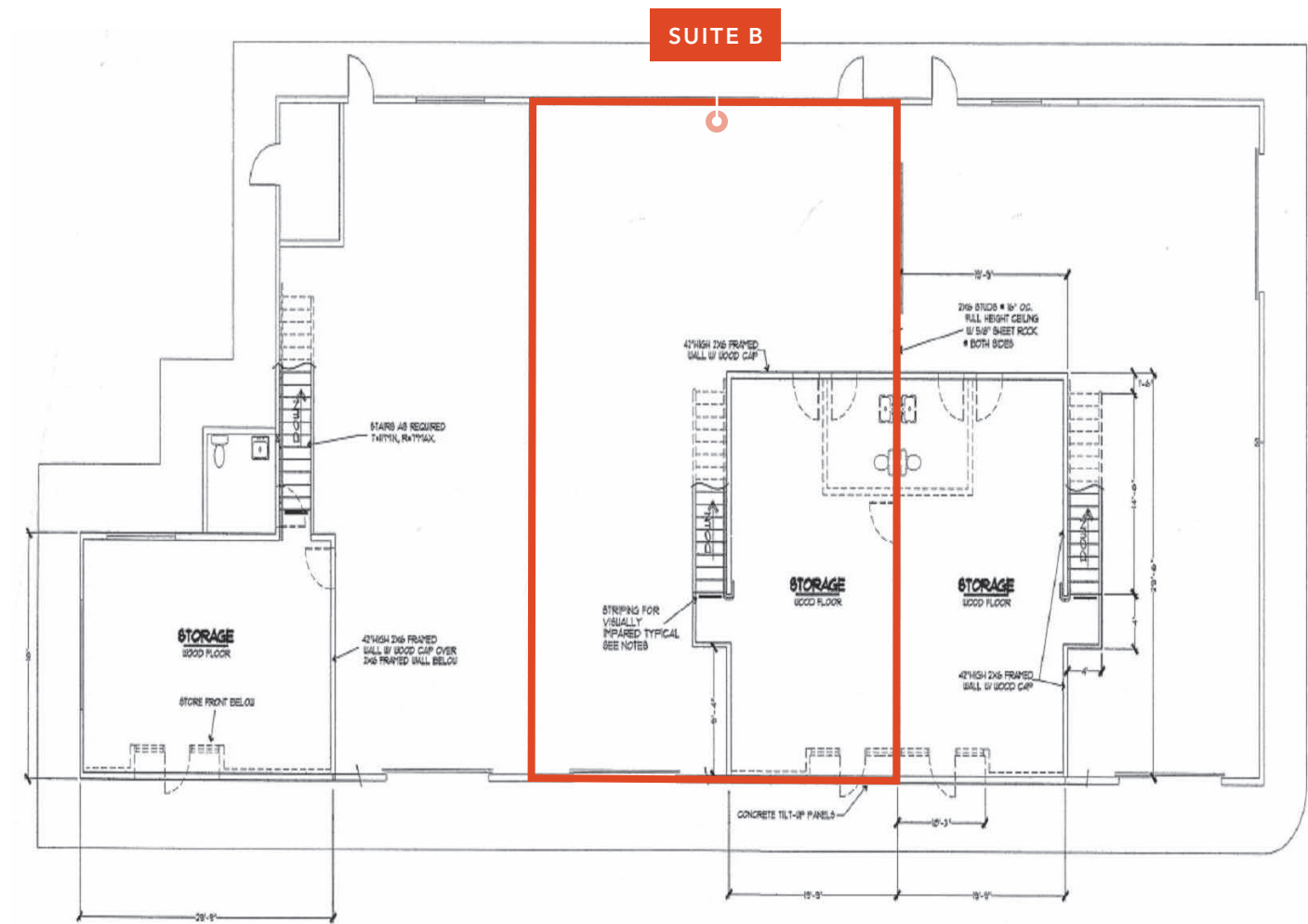
tom.conwell@kidder.com

LIC N° 01394155

KIDDER.COM

This information supplied herein is from sources we deem reliable. It is provided without any representation, warranty, or guarantee, expressed or implied as to its accuracy. Prospective Buyer or Tenant should conduct an independent investigation and verification of all matters deemed to be material, including, but not limited to, statements of income and expenses. Consult your attorney, accountant, or other professional advisor.

FLOOR PLAN - GROUND FLOOR



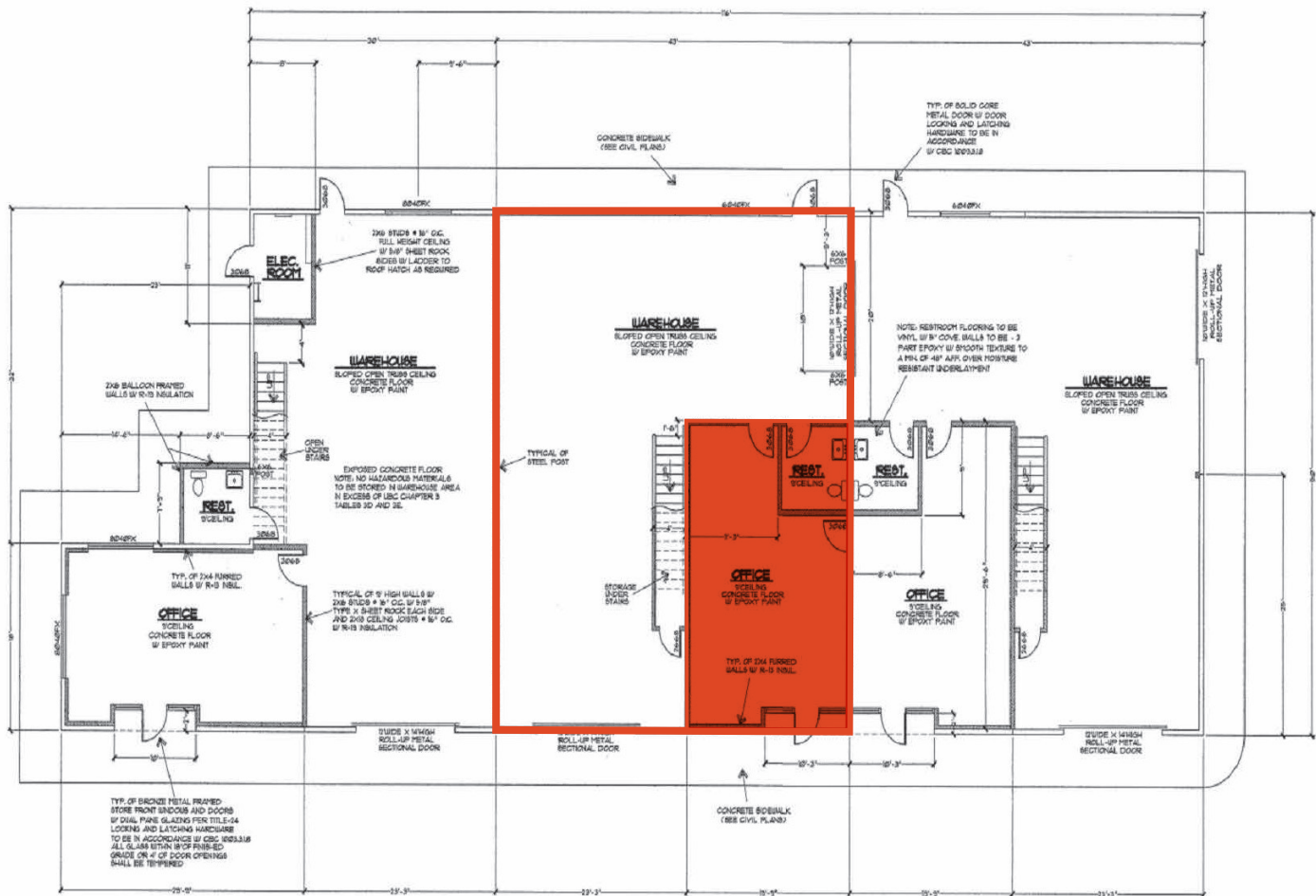
SUITE B	Available SF	Office SF	Warehouse SF	Mezzanine SF	Lease Rate/mo	Date Available
SPACE DETAILS	±2,655	±580	±1,550	±525	\$3,000/mo	5/1/2026

TOM CONWELL
916.751.3626
tom.conwell@kidder.com
LIC N° 01394155

KIDDER.COM

This information supplied herein is from sources we deem reliable. It is provided without any representation, warranty, or guarantee, expressed or implied as to its accuracy. Prospective Buyer or Tenant should conduct an independent investigation and verification of all matters deemed to be material, including, but not limited to, statements of income and expenses. Consult your attorney, accountant, or other professional advisor.

FLOOR PLAN - 2ND FLOOR MEZZANINE AREA



SUITE B MEZZANINE

Mezzanine SF

SPACE DETAILS ±525

TOM CONWELL

916.751.3626

tom.conwell@kidder.com

LIC N° 01394155

KIDDER.COM

This information supplied herein is from sources we deem reliable. It is provided without any representation, warranty, or guarantee, expressed or implied as to its accuracy. Prospective Buyer or Tenant should conduct an independent investigation and verification of all matters deemed to be material, including, but not limited to, statements of income and expenses. Consult your attorney, accountant, or other professional advisor.