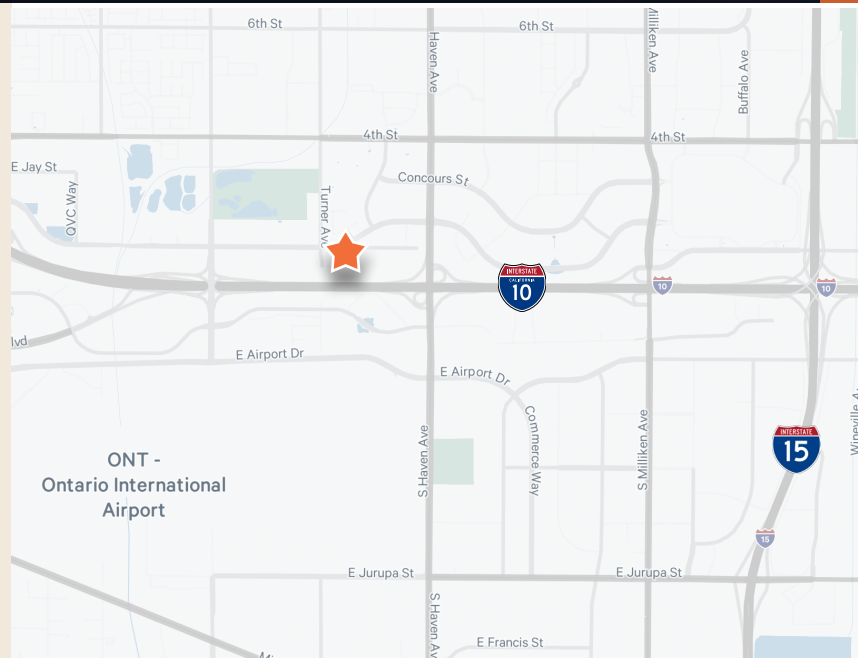


3,289 SF CREATIVE OFFICE  
SPACE FOR LEASE

**3155**  
*Sedona Court*  
ONTARIO | CA

## FEATURES

- ±3,289 RSF
- Asking is \$2.50 MG per SF per month
- 2nd Generation office space
- Potential for Medical uses
- Building signage available
- High Image direct access entrance off parking lot
- Close proximity to numerous retail amenities including Ontario Mill and Victoria Gardens
- Easy access to the I-10 FWY
- Inland Empire Blvd visibility
- Minutes from Ontario International Airport



FOR MORE INFORMATION,  
PLEASE CONTACT:

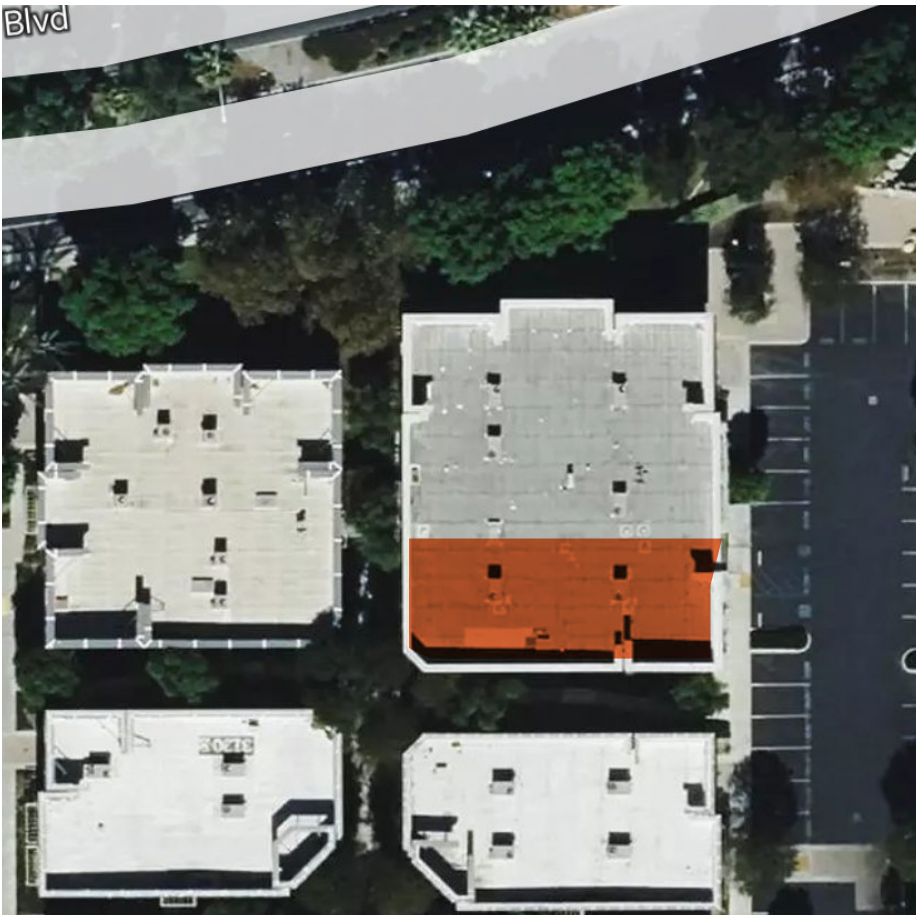
**MICHAEL DAY**

Lic. 01362830

+1 909 418 2207

Michael.Day@cbre.com

**CBRE**



©2026 CBRE, Inc. All rights reserved. This information has been obtained from sources believed reliable, but has not been verified for accuracy or completeness. You should conduct a careful, independent investigation of the property and verify all information. Any reliance on this information is solely at your own risk. CBRE and the CBRE logo are service marks of CBRE, Inc. All other marks displayed on this document are the property of their respective owners, and the use of such logos does not imply any affiliation with or endorsement of CBRE. Photos herein are the property of their respective owners. Use of these images without the express written consent of the owner is prohibited.

