



INDUSTRIAL PROPERTY | SUBLEASE

5801 SW 11TH ST., OKLAHOMA CITY, OK

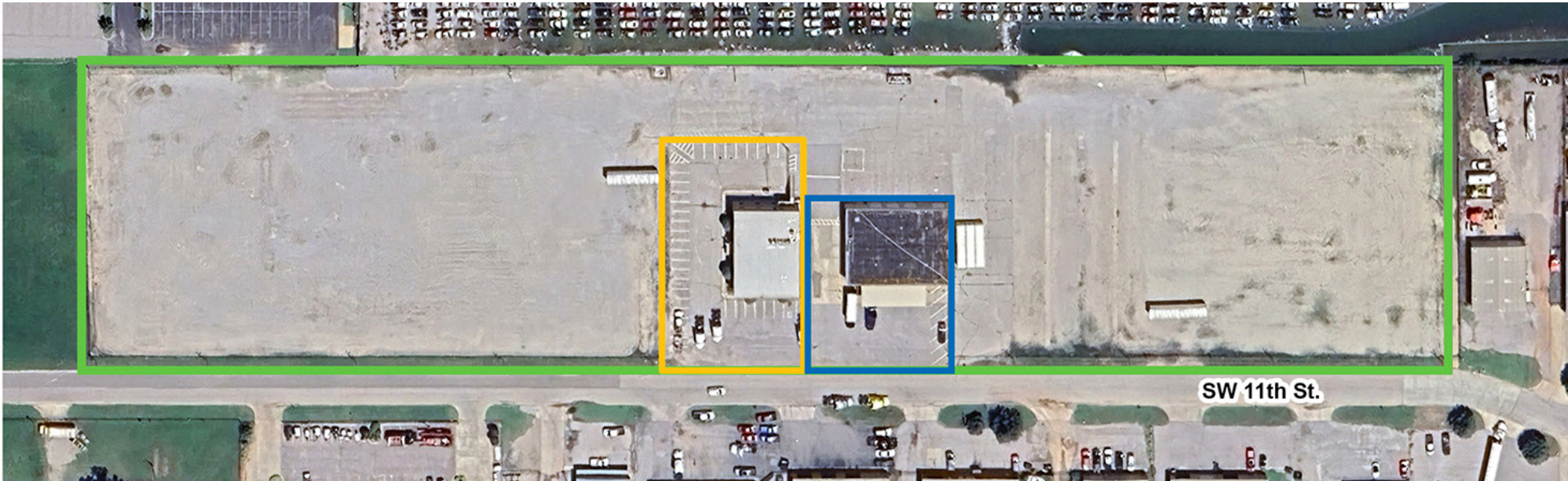
KRIS DAVIS, SIOR
kgdavis@newmarkrp.com
C: 405.202.9525

KARLEY HARPER, CCIM
kharper@newmarkrp.com
C: 405.371.3498

BRETT PRICE, CCIM, SIOR
bprice@newmarkrp.com
C: 405.613.8380

NEWMARK
ROBINSON PARK

YARD/OFFICE/WAREHOUSE | FOR SUBLEASE



Yard - 7.13 Acres± **Office Building - 9,742 SF±** **Maintenance Building - 6,958 SF±**

PROPERTY OVERVIEW

Versatile piece of property located less than 1/2 mile south of I-40, approximately 3 miles west of I-44, and 3 1/2 miles north of Will Rogers International Airport. The property consists of a two-story office building and separate maintenance building on 7.13 acres± fenced & graveled. The buildings and yard can be subleased separately or together.

DETAILS

Yard	7.13 Acres±
Office Building	9,742 SF± / 0.7 Acres±
Maintenance Building	6,958 SF± / 0.5 Acres±
Submarket	Southwest
Cross Streets	SW 11th & S MacArthur

LEASING OPTIONS

Yard Only	\$1,500/Mo/Acre (NNN)
Yard + Buildings	\$15.25/SF/YR (NNN)
Office Building Only	\$10.00/SF/YR (NNN)
Maintenance Building Only	\$8.00/SF/YR (NNN)



OFFICE BUILDING



OFFICE BUILDING



MAINTENANCE BUILDING

WAREHOUSE HIGHLIGHTS

6,958 SF±

(3) 12' x 14' grade level doors

24' x 70' wash bay with (2) 12' x 14' grade level doors

16' clear height

70' bay length

2 offices & breakroom

OFFICE HIGHLIGHTS

9,742 SF±

2-story with paved parking

Multiple conference rooms, training room, upstairs and downstairs breakrooms



