



0 East Dunne Avenue Morgan Hill, CA 95037 \$5,988,000

- Within the City Limits of Morgan Hill
- In the Urban Service Area
- Probate Sale: Court Confirmation Required

An exceptionally rare opportunity to acquire one of the last remaining in-fill development sites within the city limits of Morgan Hill. Located at 0 East Dunne Avenue, this ± 4.83 -acre parcel offers outstanding potential with a favorable General Plan designation of Residential Attached Medium (16–24 du/ac) and Mixed Use Flex (7–24 du/ac), providing flexibility for a range of residential or mixed-use development concepts.



MATT TELFER
408.691.1982
matt@scountyrealty.com
DRE# 01363041



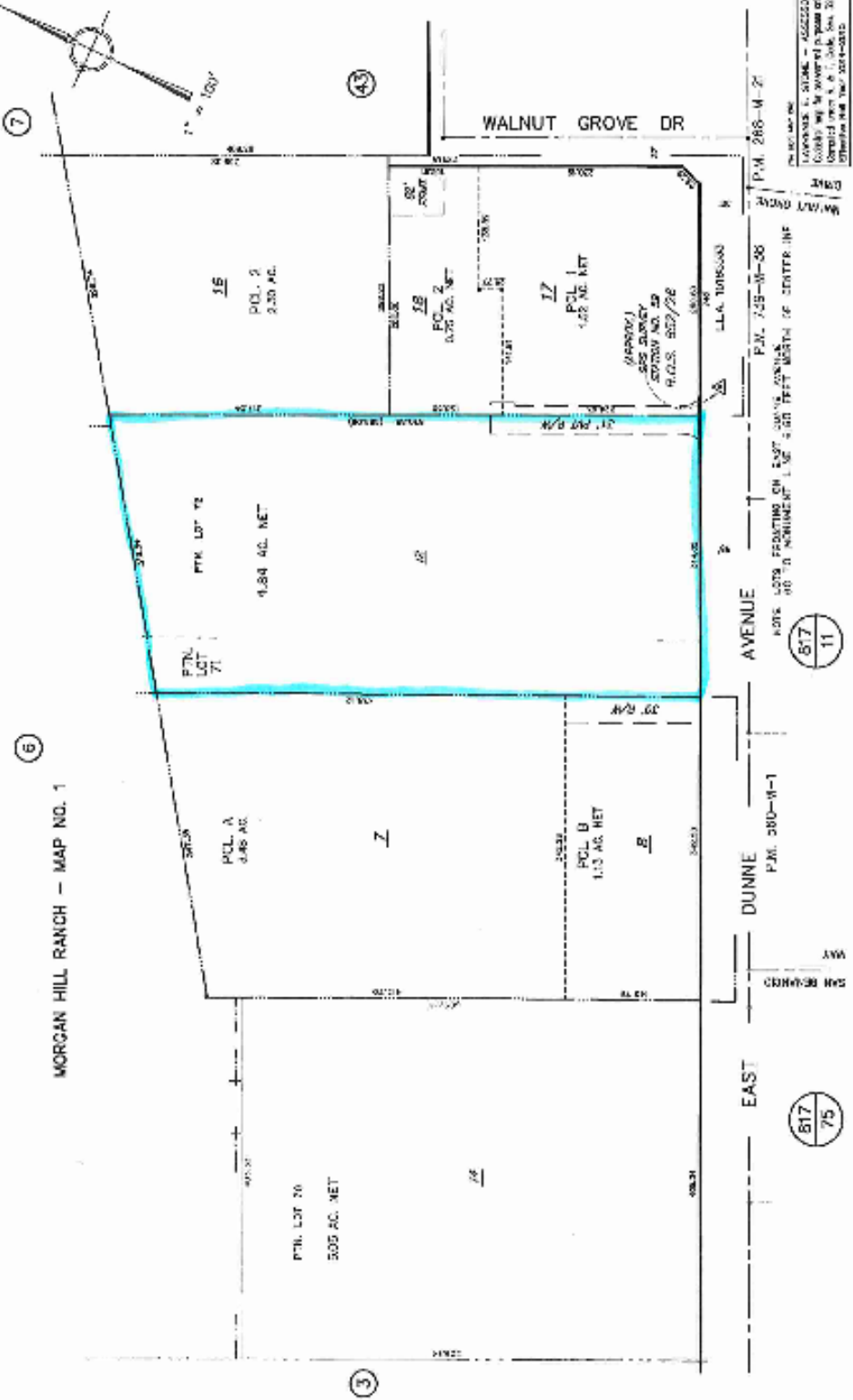
JOHN TELFER
408.691.4076
john@scountyrealty.com
DRE# 00493328





OFFICE OF COUNTY ASSESSOR — SANTA CLARA COUNTY, CALIFORNIA

BOOK 726 PAGE 2



This map/plat is being furnished as an aid in locating the herein described land in relation to adjoining streets, natural boundaries and other land, and is not a survey of the land depicted. Keep in the event a policy of title insurance is expressly modified by endorsement, if any, the Company does not insure dimensions, distances, bearings, or other data shown on this map/plat.

RECORDED IN PUBLIC RECORDS - 05/22/2008
 COUNTY OF SANTA CLARA, CALIFORNIA
 OFFICE OF COUNTY ASSESSOR
 1000 MARKET STREET, SUITE 200
 SAN JOSE, CALIFORNIA 95128
 PHONE: (408) 299-2000
 FAX: (408) 299-2001
 WWW.SCCAS.COM

NOTE: LOTS 16-20 ARE PART OF THE 100 AC. TRACT OF LOTS 16-20, BEING PART OF THE CENTER 1/4 OF SECTION 17, T.12N. R.12E. S.17E. COUNTY OF SANTA CLARA, CALIFORNIA. P.M. 268-M-21

NOTE: LOTS 21-25 ARE PART OF THE 100 AC. TRACT OF LOTS 21-25, BEING PART OF THE CENTER 1/4 OF SECTION 17, T.12N. R.12E. S.17E. COUNTY OF SANTA CLARA, CALIFORNIA. P.M. 268-M-21

NOTE: LOTS 26-30 ARE PART OF THE 100 AC. TRACT OF LOTS 26-30, BEING PART OF THE CENTER 1/4 OF SECTION 17, T.12N. R.12E. S.17E. COUNTY OF SANTA CLARA, CALIFORNIA. P.M. 268-M-21

NOTE: LOTS 31-35 ARE PART OF THE 100 AC. TRACT OF LOTS 31-35, BEING PART OF THE CENTER 1/4 OF SECTION 17, T.12N. R.12E. S.17E. COUNTY OF SANTA CLARA, CALIFORNIA. P.M. 268-M-21

NOTE: LOTS 36-40 ARE PART OF THE 100 AC. TRACT OF LOTS 36-40, BEING PART OF THE CENTER 1/4 OF SECTION 17, T.12N. R.12E. S.17E. COUNTY OF SANTA CLARA, CALIFORNIA. P.M. 268-M-21



The lot lines shown are approximations and are not officially surveyed property boundaries

Google Earth

Image Landsat / Copernicus



San Jose

101

Trader Joes

Subject
+4.84 ACRES

Safeway & Home Depot

Morgan Hill
Regional Soccer Facility
& Aquatic Complex

2000 ft

Downtown Morgan Hill

Caltrans
Train Station

Google Earth
Image © 2025 Airbus