

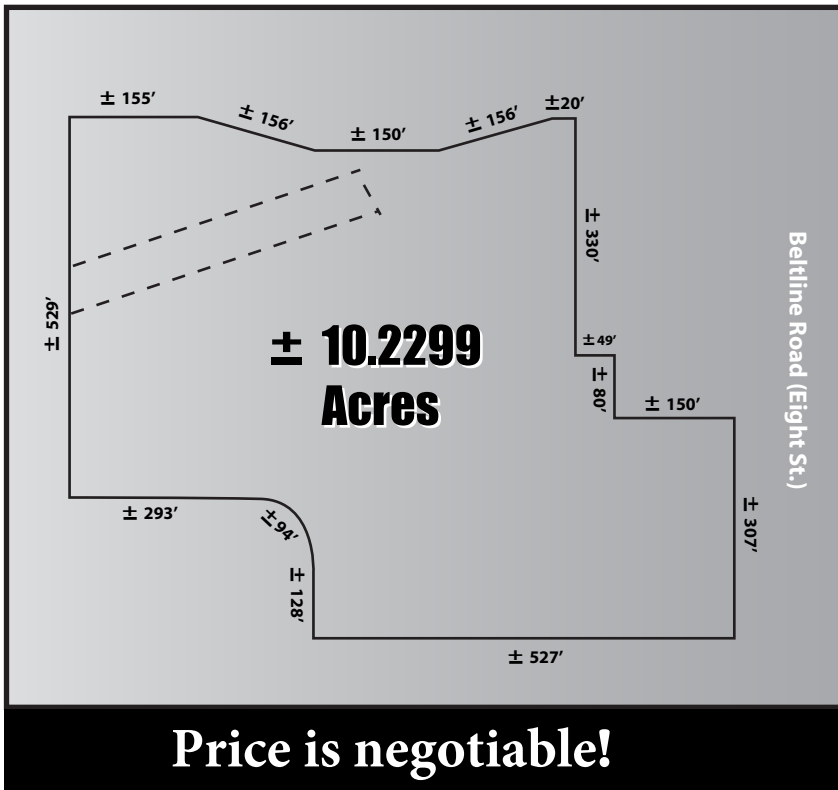
**M  
B  
I**

Commercial Realty

# Retail Land

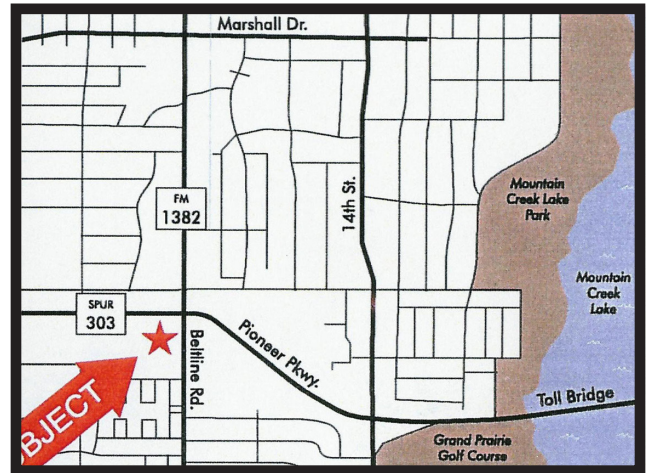
## For Sale & For Lease

### SWQ Beltline Road & Spur 303



This land is an excellent retail site located in the southeast quadrant of Grand Prairie. This property is located just north of Interstate 20 and is in close proximity to the fastest growing residential and commercial areas of Grand Prairie.

The land is both for lease or sale and Pad Sites are available!



#### Property Specifications:

- Size:** ±10,2299 Acres
- Utilities:** Available to site
- Zoning:** "GR" - General Retail
- Frontage:** Beltline Rd. ± 307'  
Spur 303 ± 637'
- Traffic Count:** Beltline Rd. ± 16,700 cars  
Spur 303 ± 25,137 cars

For Information please contact:

**Christopher Garoosi at  
214 368 2700 ext 111**

MBI Commercial Realty  
5510 Abrams Road  
Dallas, Texas 75214