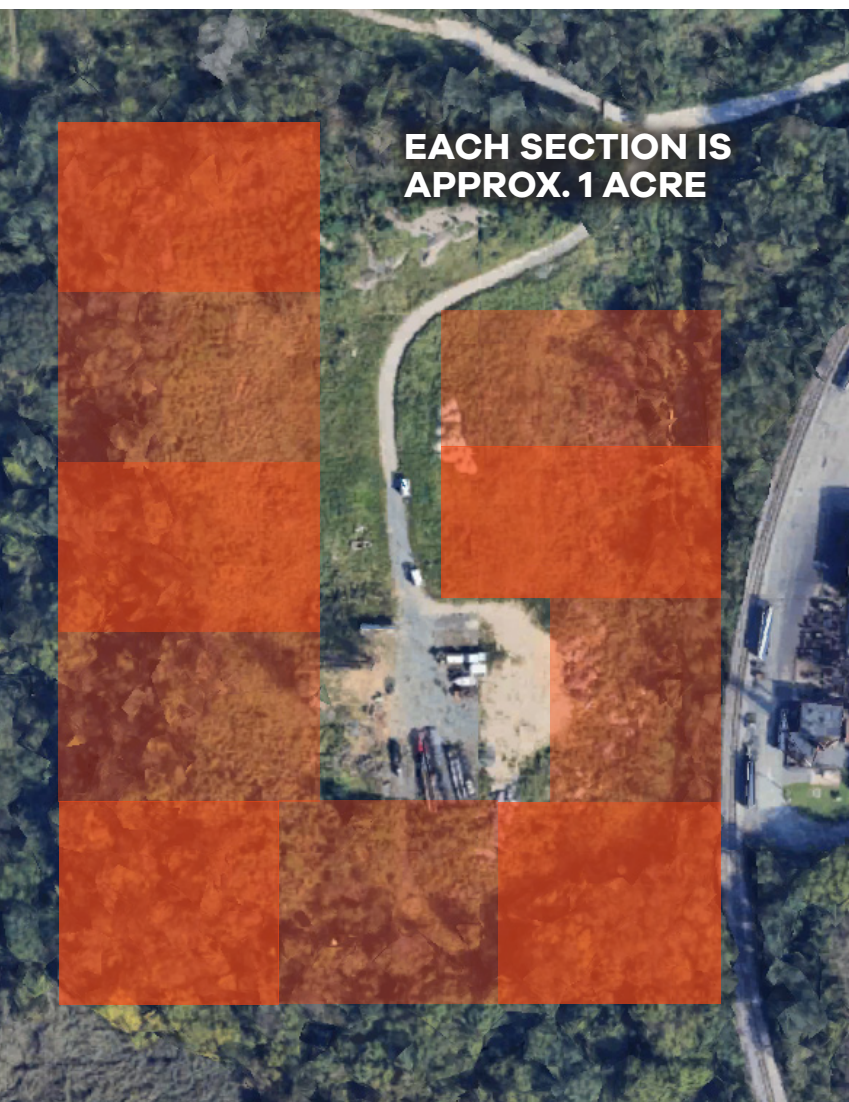


1500 ARUNDEL BLVD.
BALTIMORE, MD

**Contractor Yard
FOR LEASE**

10+ ACRE CONTRACTOR YARD WITH FLEXIBLE SIZING AVAILABLE

**Direct access to regional transportation corridors and
close to the Port of Baltimore industrial waterfront**



PROPERTY DETAILS

- ❖ 1-10+ acre secured contractor yard (W3 zoning) with flexible sizing available.
- ❖ Under new ownership — excellent opportunity for a user/tenant to move in.
- ❖ Utilities on-site: electric and water (tanks).
- ❖ Shipping containers + shipping containers with covered shelters available for lease.
- ❖ Less than 10 minutes (~7 miles) to downtown Baltimore, and under 15 minutes to BWI Airport (~8 miles).
- ❖ Direct access to regional transportation corridors (I-97, MD-100, I-695/I-95) and close to the Port of Baltimore industrial waterfront.
- ❖ Ideal for contractors, equipment rental/storage, logistics/distribution, marine support, or outdoor storage users.
- ❖ Contact Broker for rental rate.

 [**W3 Zoning Use Table**](#)

For More Information Contact
Ryan Brant | rbrant@rossocre.com | 301.768.2710

