



BRANCH ROAD AND SMITH ROAD V/L, MEDINA, OH 44256

# BRANCH RD & SMITH RD V/L



**STEVE MASICA**  
Principal  
330.714.4415  
steve.masica@sperrycga.com  
OH #2013002150

**MICHELLE MASICA**  
Principal/Broker  
330.590.7401  
michelle.masica@sperrycga.com  
OH #2019006823

**THE MASICA COMPANY**  
2814 DETROIT AVE, SUITE 119  
CLEVELAND, OH 44113  
[WWW.THEMASICACOMPANY.COM](http://WWW.THEMASICACOMPANY.COM)



# EXECUTIVE SUMMARY



## OFFERING SUMMARY

Lot Size:	115.9 Acres
Price / Acre:	\$38,500
Zoning:	I-1 Industrial
Market:	Greater Akron/Cleveland
Submarket:	Medina

## PROPERTY OVERVIEW

One of the largest Industrially zoned sites in Northeast Ohio AND located in an OPPORTUNITY ZONE! This property is situated between Smith Rd and Branch Rd contains five parcels to make up the 115.9 acres. Land is zoned I-1 Industrial with water at the street and sewer nearby. The property is easily developed and provides direct frontage on both W. Smith and Branch roads.

## PROPERTY HIGHLIGHTS

- Approx. 1800' frontage on W. Smith Rd.
- Approx. 1000' frontage on Branch Rd.
- 2.5 Miles west of Downtown Medina
- Just west of Commerce Dr. and the Medina Industrial Park
- 8.5 miles from I-71 and Rt. 18
- 10.5 miles to I-71/Rt. 224/I-76

**115.9 ACRES OF VACANT LAND ZONED I-1 NEAR INDUSTRIAL PARK**

**BRANCH ROAD AND SMITH ROAD V/L, MEDINA, OH 44256**

SperryCGA - The Masica Company // 2814 DETROIT AVE. SUITE 119 , CLEVELAND, OH 44113 // [THEMASICACOMPANY.COM](http://THEMASICACOMPANY.COM)

EXECUTIVE SUMMARY // 2

We obtained the information above from sources we believe to be reliable. However, we have not verified its accuracy and make no guarantee, warranty or representation about it. It is submitted subject to the possibility of errors, omissions, change of price, rental or other conditions, prior sale, lease or financing, or withdrawal without notice. We include projections, opinions, assumptions or estimates for example only, and they may not represent current or future performance of the property. You and your tax and legal advisors should conduct your own investigation of the property and transaction.



\*Each SperryCGA office independently owned and operated



# ADDITIONAL PHOTOS



**115.9 ACRES OF VACANT LAND ZONED I-1 NEAR INDUSTRIAL PARK**

**BRANCH ROAD AND SMITH ROAD V/L, MEDINA, OH 44256**

**SperryCGA - The Masica Company // 2814 DETROIT AVE. SUITE 119 , CLEVELAND, OH 44113 // [THEMASICACOMPANY.COM](http://THEMASICACOMPANY.COM)**

**ADDITIONAL PHOTOS // 3**

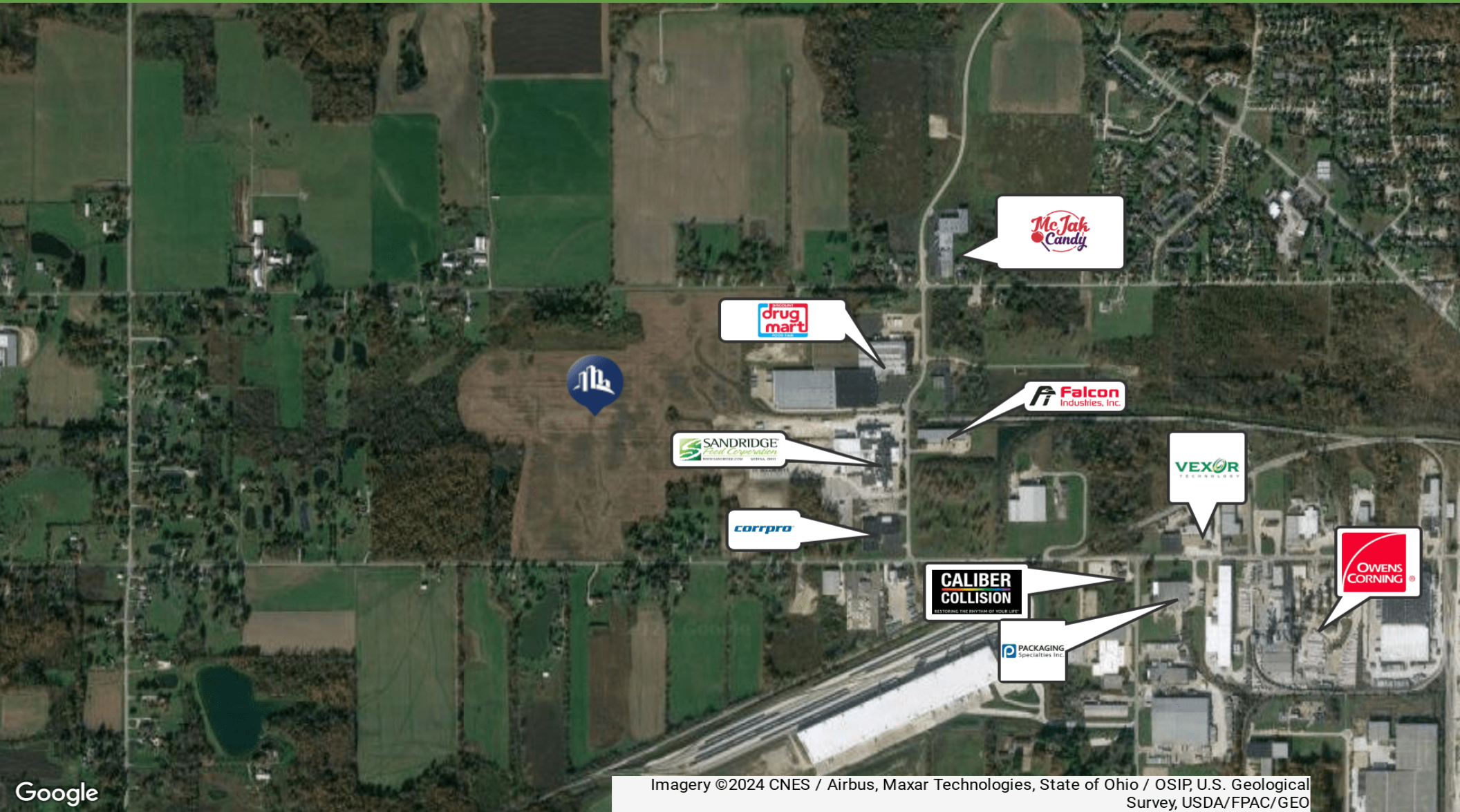


We obtained the information above from sources we believe to be reliable. However, we have not verified its accuracy and make no guarantee, warranty or representation about it. It is submitted subject to the possibility of errors, omissions, change of price, rental or other conditions, prior sale, lease or financing, or withdrawal without notice. We include projections, opinions, assumptions or estimates for example only, and they may not represent current or future performance of the property. You and your tax and legal advisors should conduct your own investigation of the property and transaction.

\*Each SperryCGA office independently owned and operated



# REGIONAL MAP



Imagery ©2024 CNES / Airbus, Maxar Technologies, State of Ohio / OSIP, U.S. Geological Survey, USDA/FPAC/GEO

115.9 ACRES OF VACANT LAND ZONED I-1 NEAR INDUSTRIAL PARK

BRANCH ROAD AND SMITH ROAD V/L, MEDINA, OH 44256

SperryCGA - The Masica Company // 2814 DETROIT AVE. SUITE 119 , CLEVELAND, OH 44113 // THEMASICACOMPANY.COM

REGIONAL MAP // 4



We obtained the information above from sources we believe to be reliable. However, we have not verified its accuracy and make no guarantee, warranty or representation about it. It is submitted subject to the possibility of errors, omissions, change of price, rental or other conditions, prior sale, lease or financing, or withdrawal without notice. We include projections, opinions, assumptions or estimates for example only, and they may not represent current or future performance of the property. You and your tax and legal advisors should conduct your own investigation of the property and transaction.

\*Each SperryCGA office independently owned and operated



