

FOR SUBLEASE
303 South Palm Avenue
Palatka, FL 32177



SUBLEASE THROUGH JULY 2031

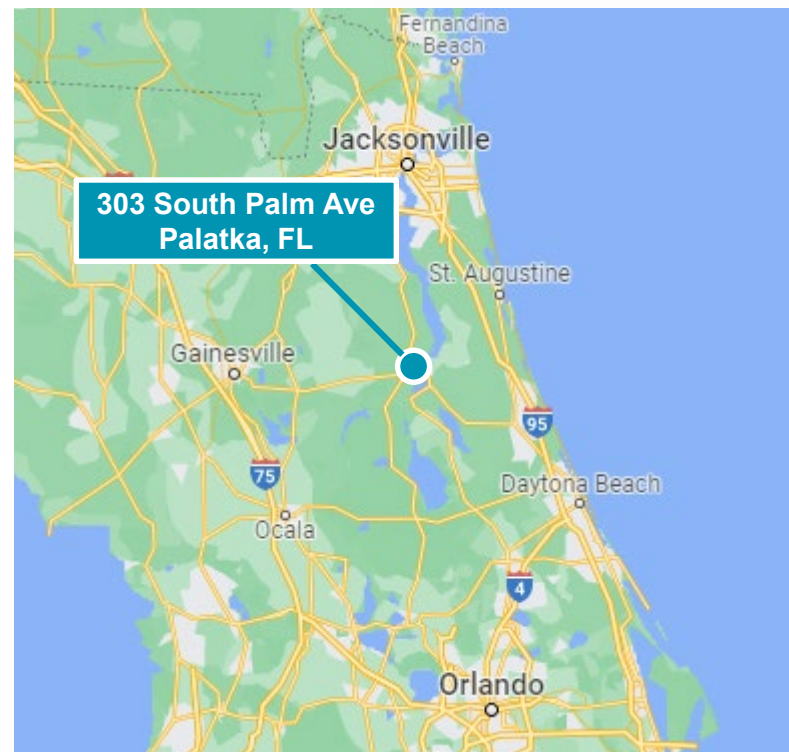


4,806 SF Warehouse and Showroom

Property Highlights

Palatka is located almost equal distance to Jacksonville, Ocala, Daytona, Gainesville, and Orlando making it a perfect hub of Northeast Florida.

- 1,890 SF Retail / Showroom
- 2,826 SF Warehouse
- Energy Efficient Lighting
- 13' - 14' 10" Clear Height
- Clear Span
- Built in 2017
- 0.52 Acre Lot
- Loading: 6 Van Height / 1 Truck Dock
- Two Points of Ingress / Egress
- Signage Available

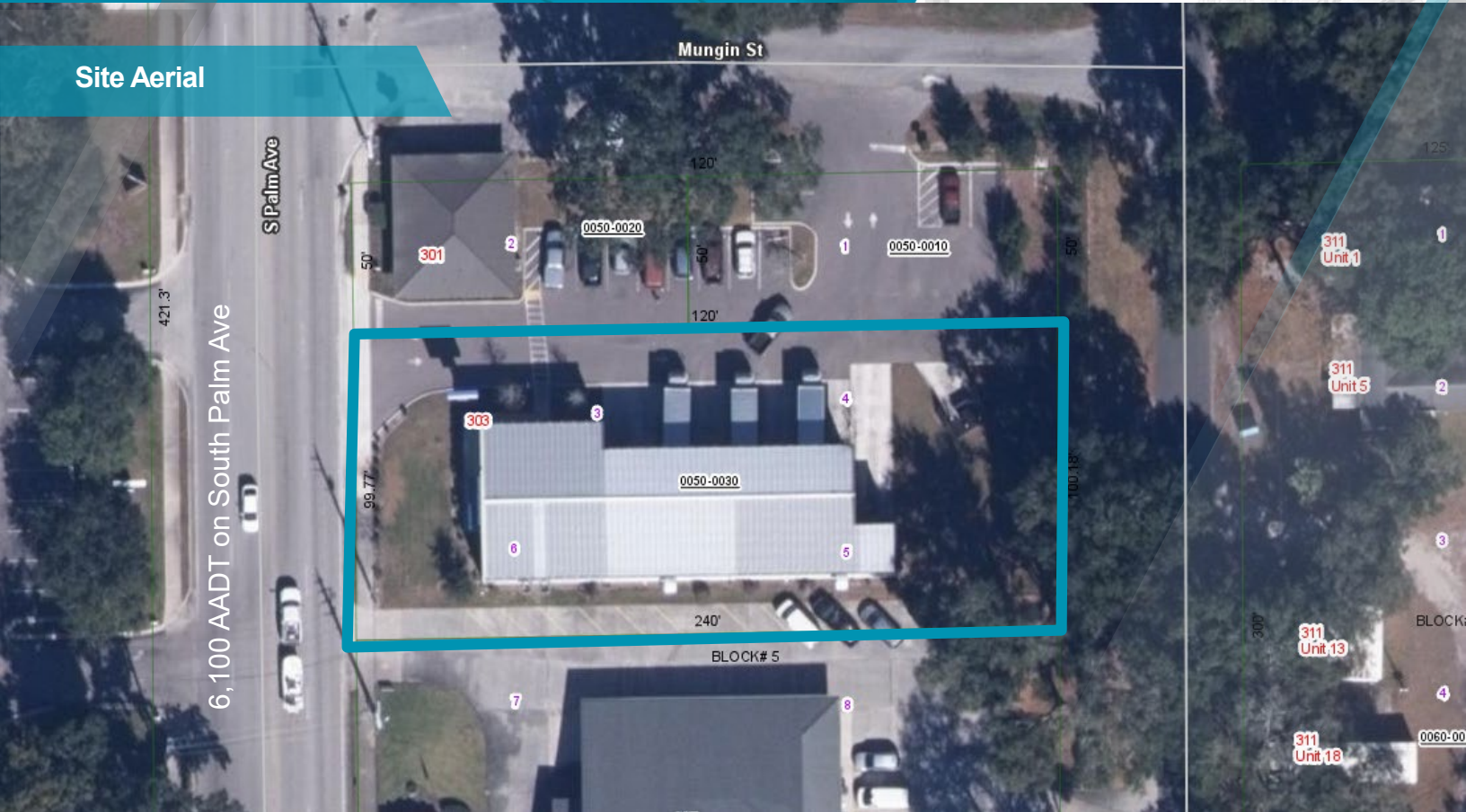


©2021 Cushman & Wakefield. All rights reserved. The information contained in this communication is strictly confidential. This information has been obtained from sources believed to be reliable but has not been verified. NO WARRANTY OR REPRESENTATION, EXPRESS OR IMPLIED, IS MADE AS TO THE CONDITION OF THE PROPERTY (OR PROPERTIES) REFERENCED HEREIN OR AS TO THE ACCURACY OR COMPLETENESS OF THE INFORMATION CONTAINED HEREIN, AND SAME IS SUBMITTED SUBJECT TO ERRORS, OMISSIONS, CHANGE OF PRICE, RENTAL OR OTHER CONDITIONS, WITHDRAWAL WITHOUT NOTICE, AND TO ANY SPECIAL LISTING CONDITIONS IMPOSED BY THE PROPERTY OWNER(S). ANY PROJECTIONS, OPINIONS OR ESTIMATES ARE SUBJECT TO UNCERTAINTY AND DO NOT SIGNIFY CURRENT OR FUTURE PROPERTY PERFORMANCE.

FOR SUBLEASE
303 South Palm Avenue
Palatka, FL 32177



Site Aerial



DISTANCE TO:

64^{mi}

Jacksonville

42.5^{mi}

Gainesville

53^{mi}

Ocala

99^{mi}

Orlando

55^{mi}

Daytona

Contact

KENDALL WILSON
Associate
+1 904 380 8341
kendall.wilson@cushwake.com

CUSHMAN & WAKEFIELD OF FLORIDA, LLC
121 West Forsyth Street, Suite 900
+1 904 731 9500
cushmanwakefield.com