



FOR LEASE

Highly Visible W 11th Location

4150 W 11th Ave.
Unit B
Eugene OR 97402

≈3,000 SF of warehouse space

\$2,975 PER MONTH no additional NNN expense

- Space includes office, restroom, and three roll-up doors
- Mezzanine break area in the warehouse above the office
- Signage on West 11th Avenue provides excellent visibility

**Evans
Elder
Brown &
Seubert**

COMMERCIAL REAL ESTATE

CONTACT

Stephanie Seubert
stephanie@eebcre.com

541.345.4860

Licensed in the State of Oregon.

Description

4150 W 11th Ave. | Unit B | Eugene OR 97402

**Evans
Elder
Brown &
Seubert**

COMMERCIAL REAL ESTATE

CONTACT

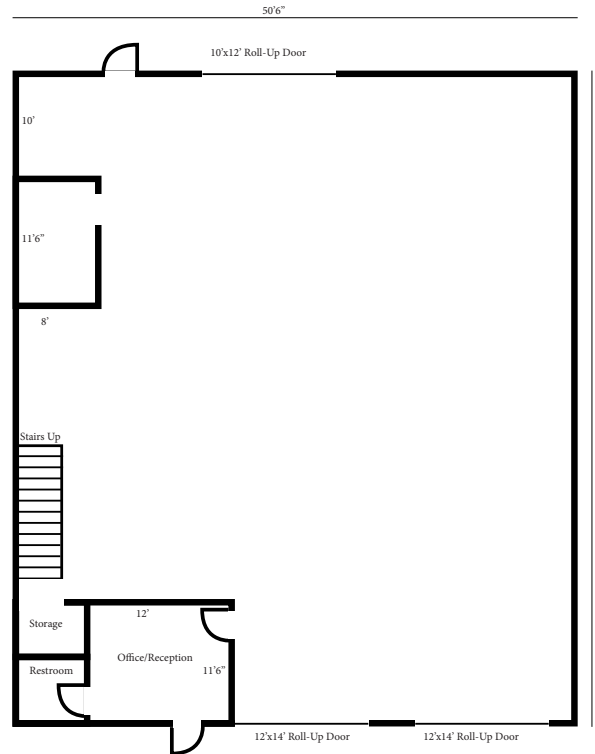
**Stephanie
Seubert**

stephanie@eebcre.com

541.345.4860

101 East Broadway
Suite #101
Eugene, OR 97401

Licensed in the
State of Oregon.



- Space includes office space with private restroom and open warehouse
- 2-12' x 14' roll up doors facing West 11th Avenue
- 1-12' x 12' roll up door to the rear yard area
- Mezzanine break area with sink located in the warehouse above the office
- Signage on West 11th Avenue provides excellent visibility
- \$2,975.00 per month, modified gross



Location

4150 W 11th Ave. | Unit B | Eugene OR 97402

Evans
Elder
Brown &
Seubert

COMMERCIAL REAL ESTATE

CONTACT

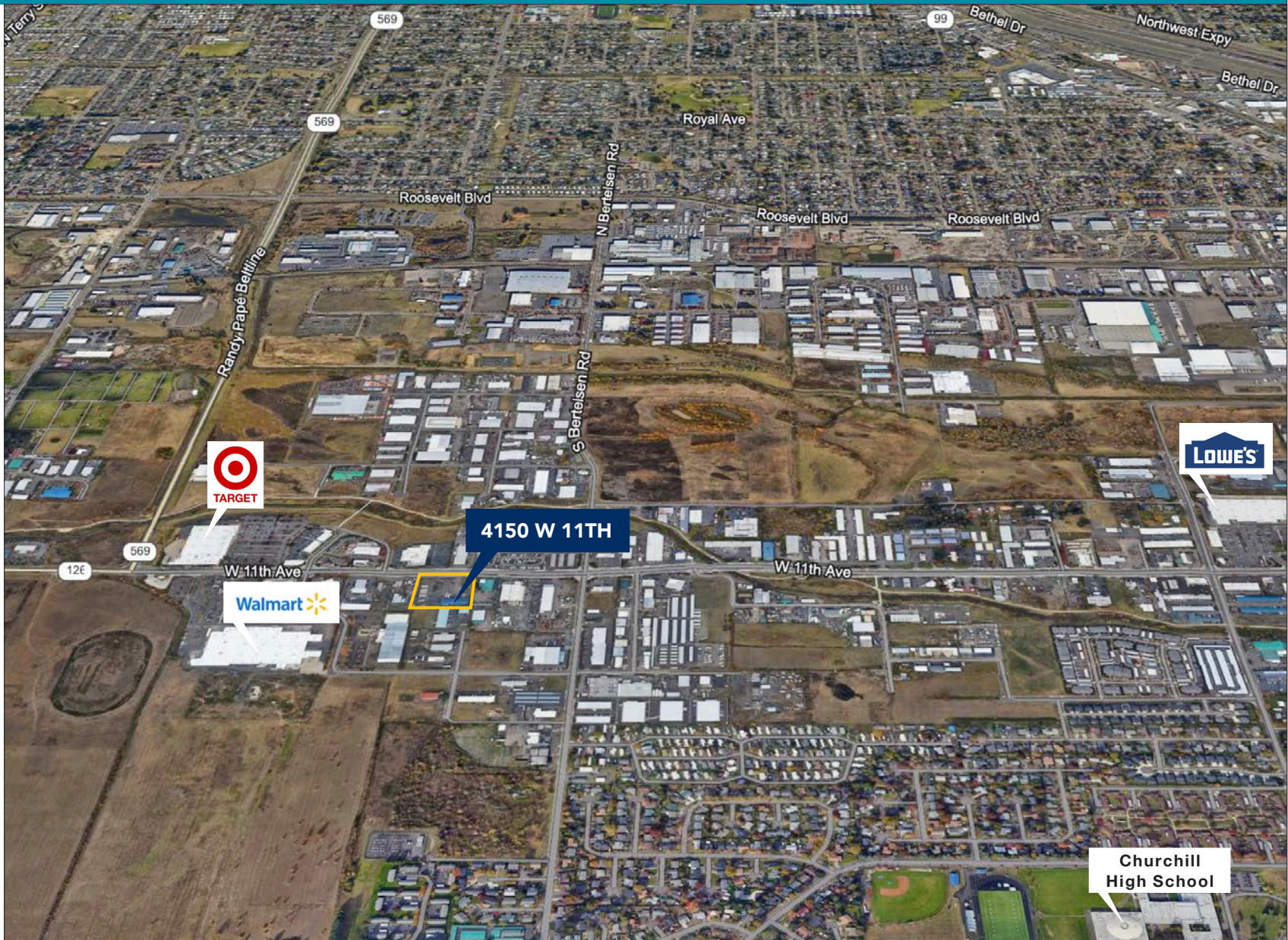
**Stephanie
Seubert**

stephanie@eebcre.com

541.345.4860

101 East Broadway
Suite #101
Eugene, OR 97401

Licensed in the
State of Oregon.



The information in this package was gathered from sources deemed reliable, however Evans Elder Brown & Seubert makes no representation or warranty of the accuracy of the information. Any buyer or tenant considering a purchase or lease of this property should confirm any and all information relied upon in making the decision to purchase or lease prior to finalizing the transaction and bears the risk of all inaccuracies.