



**3,466 SF OFFICE SPACE + 1,200 WAREHOUSE FOR LEASE**

**3000 & 3002 BOB WALLACE AVE**  
HUNTSVILLE, ALABAMA 35802



## PROPERTY OVERVIEW

Triad Properties Corporation is pleased to present the opportunity to lease 3000, 3002 Bob Wallace Avenue, office space and warehouse centrally located between Memorial Parkway to the east and I-565 to the west in Huntsville, Alabama. It is a short drive to the medical district and downtown areas, the Airport Road area or Cummings Research Park.

### PROPERTY DETAILS

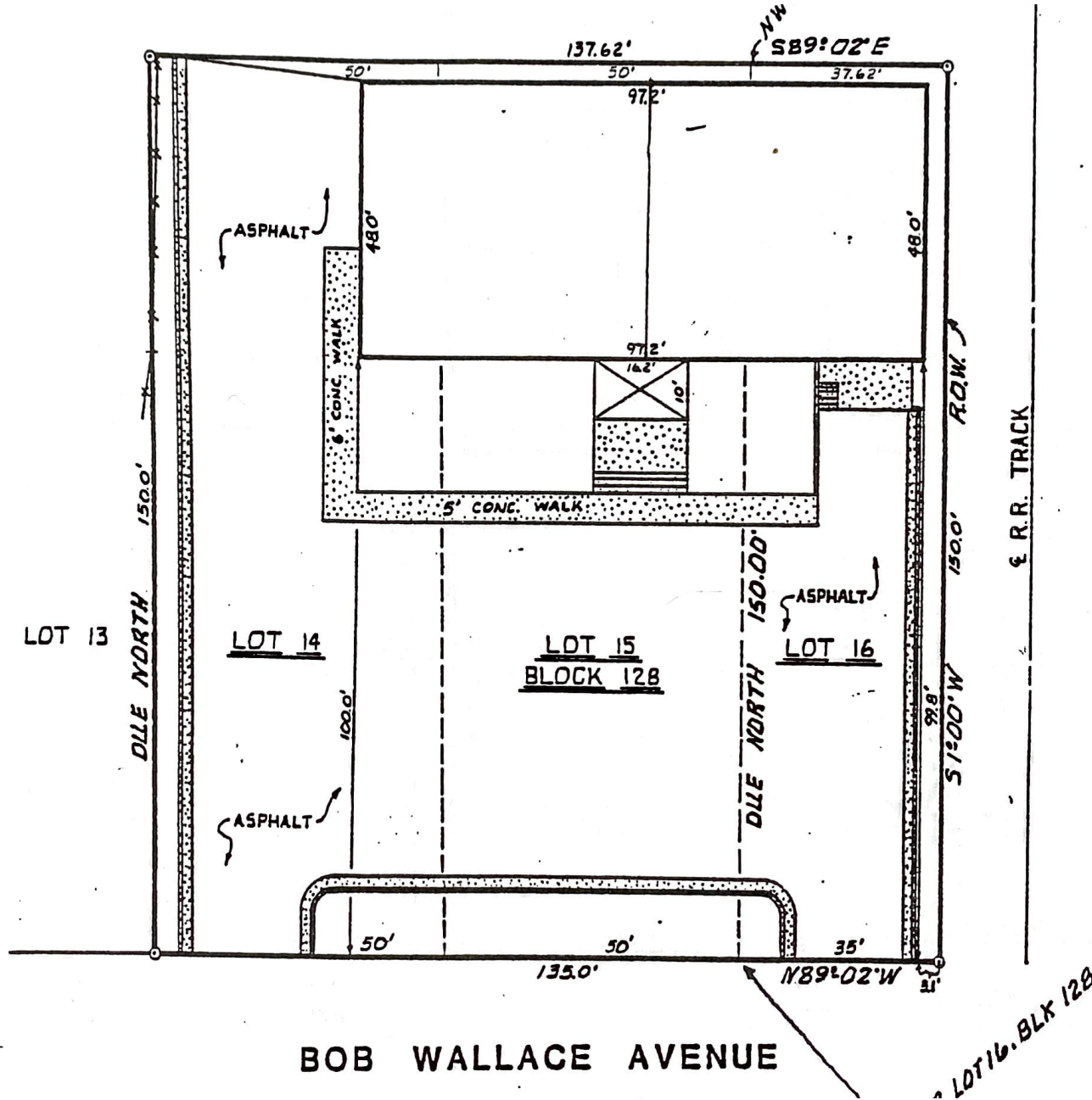
<b>LOCATION</b>	3000, 3002 Bob Wallace Avenue Huntsville, Alabama 35802
<b>TOTAL SIZE</b>	3,466 SF Office + 1,200 SF Warehouse
<b>FLOORS</b>	One (1) Story
<b>PARKING</b>	Ample parking spaces



## SPACE HIGHLIGHTS

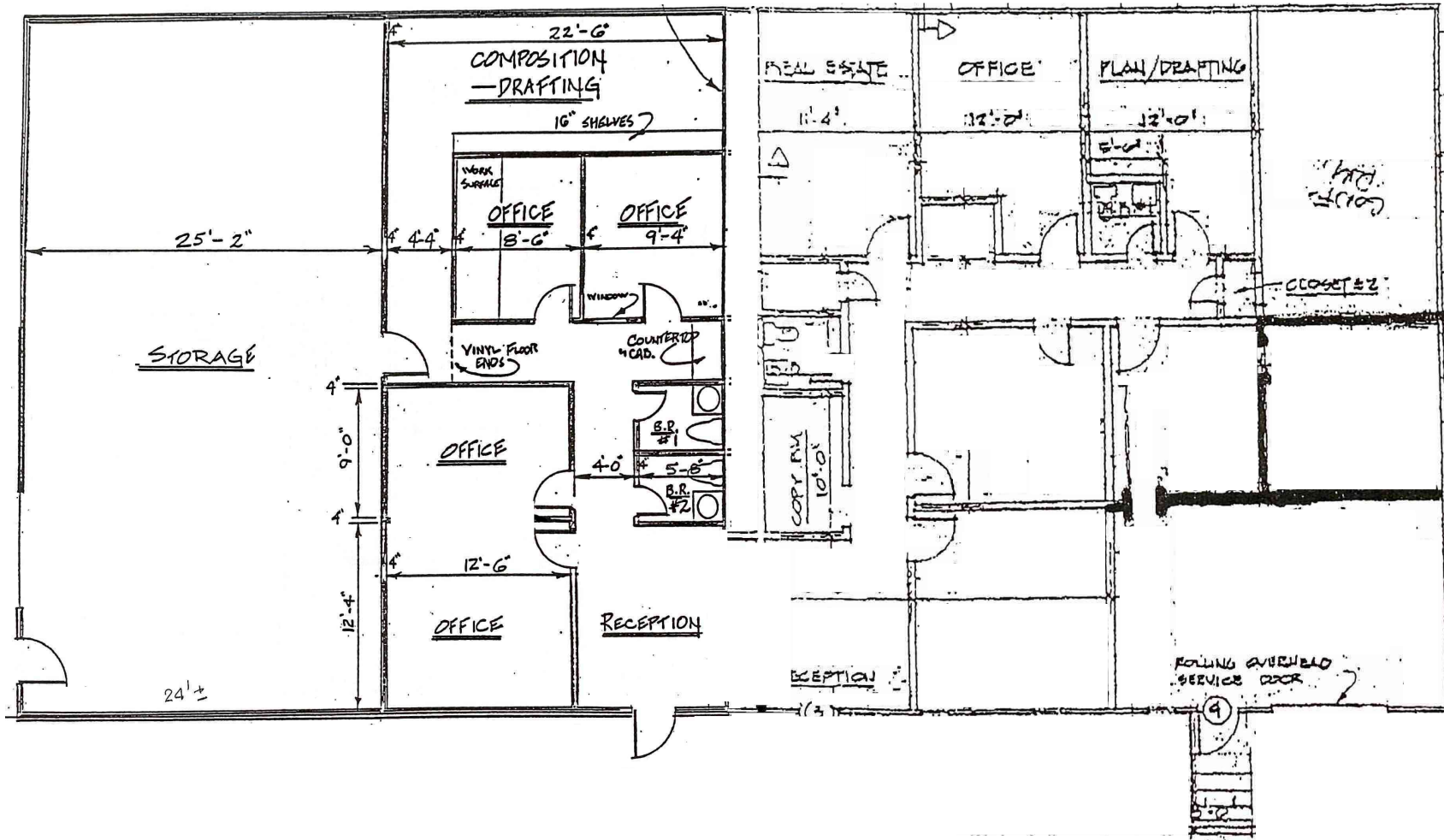
- 3,466 SF Office Space
- 1,200 SF Warehouse
- Private offices, multiple work spaces, break room, and reception
- Ample Surface Parking
- Highly visible location

SITE PLAN



## FLOOR PLAN

3000, 3002 BOB WALLACE AVE  
3,466 SF OFFICE + 1,200 SF WAREHOUSE





**FOR MORE INFORMATION,  
PLEASE CONTACT:**

**JIM KAPLAN**

256.508.6666

[jkaplan@triadproperties.com](mailto:jkaplan@triadproperties.com)

Although Broker has used reasonable care in obtaining this data, this material is submitted without representation or warranty, express or implied. All information is subject to change by the owner prior to sale or lease.



TRIAD PROPERTIES CORPORATION  
100 CHURCH STREET, SUITE 200  
HUNTSVILLE, ALABAMA 35801  
[WWW.TRIADPROPERTIES.COM](http://WWW.TRIADPROPERTIES.COM)