

# The New Look Pointe Business Plaza

1,401 – 10,529 SF Office Suites

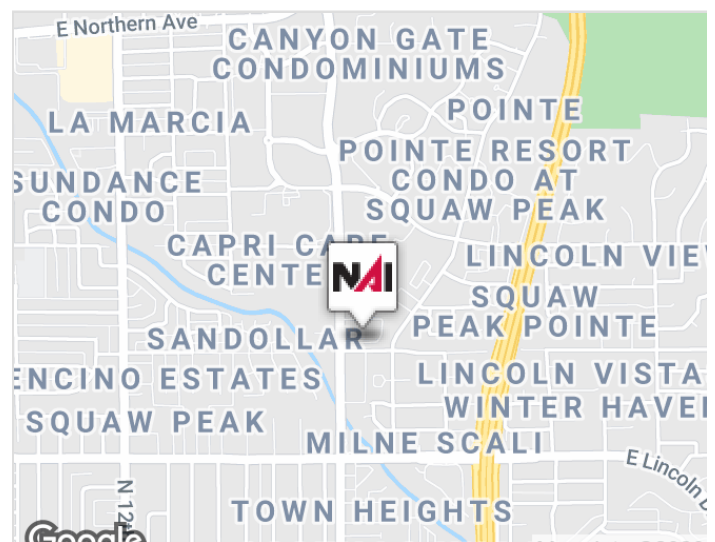


## 7227 N 16th Street

Phoenix, Arizona 85020

### Property Features

- Building/property remodel
- Mountain views
- Easily accessible to SR-51
- 10 minutes to Sky Harbor
- Centrally located
- 5 minutes to Camelback Corridor
- 5:1,000 parking, covered available
- Move-in ready suites
- On-site maintenance office
- On-site day porter



Demographics	1 Mile	3 Miles	5 Miles
Average Age:	43.0	41.5	38.2
Population:	16,546	111,484	372,413
Average HH Income	\$98,748	\$98,205	\$81,302
Daytime Emp. Pop.	9,893	70,575	195,650

**For Lease: \$21.00/SF  
(Full Service)**

**Kevin Higgins**  
602 393 6605  
kevin.higgins@naihonorizon.com



For Lease

# Available Spaces

## The New Look Pointe Business Plaza



FLOOR	SUITE #	LEASE RATE	LEASE TYPE	SIZE (SF)	AVAILABILITY
1st Floor	124	\$21.00 SF/YR	Full Service	1,401	Immediately
1st Floor	190	\$21.00 SF/YR	Full Service	4,975	Immediately
1st Floor	195	\$21.00 SF/YR	Full Service	5,554	30 Days
1st Floor	190 & 195	\$21.00 SF/YR	Full Service	10,529	Immediately



For Lease

# The New Look Pointe Business Plaza

# Property **Photos**



Kevin Higgins  
602 393 6605  
kevin.higgins@naihorizon.com

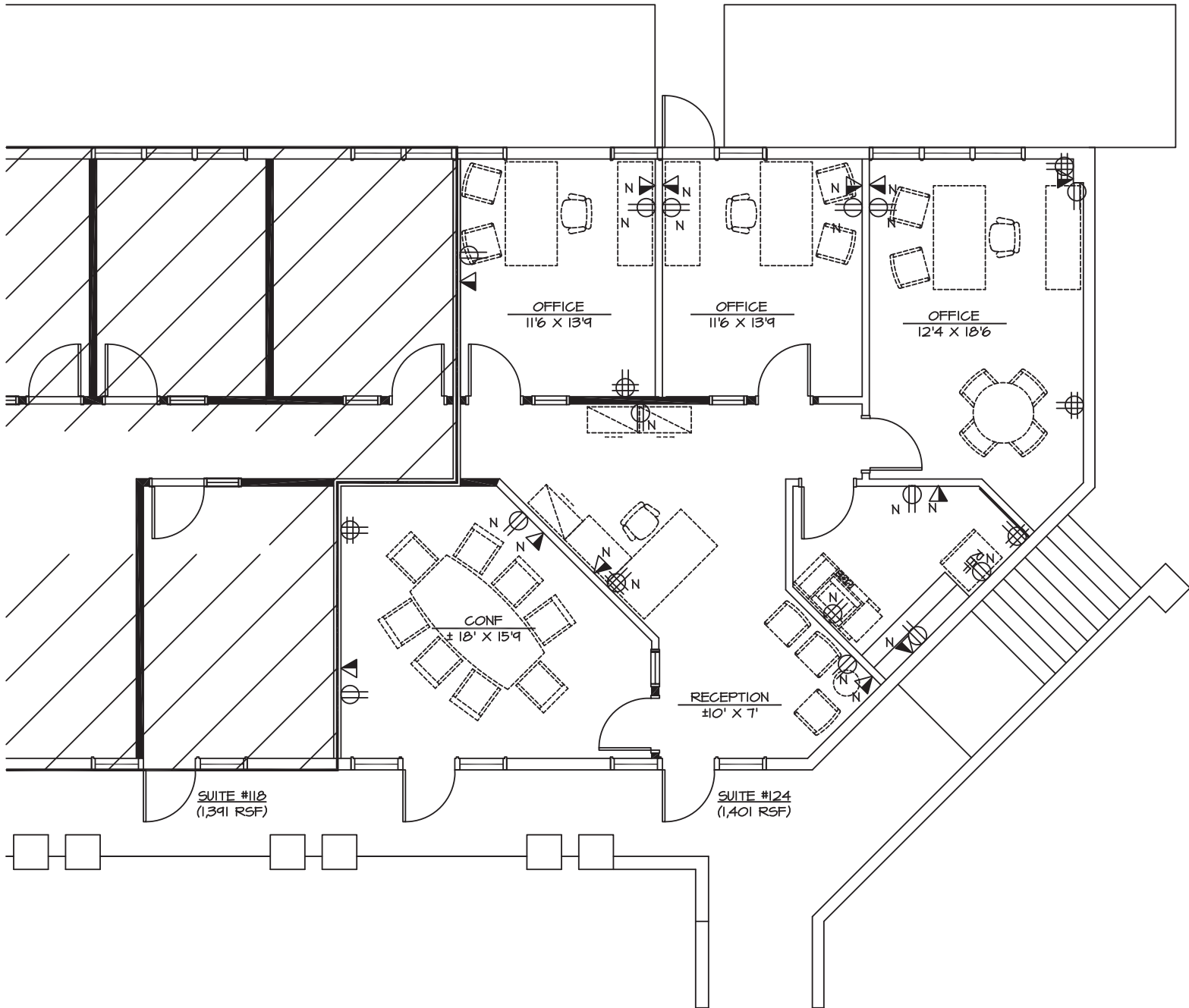
**NAI**Horizon



# Floor Plan

## The New Look Pointe Business Plaza

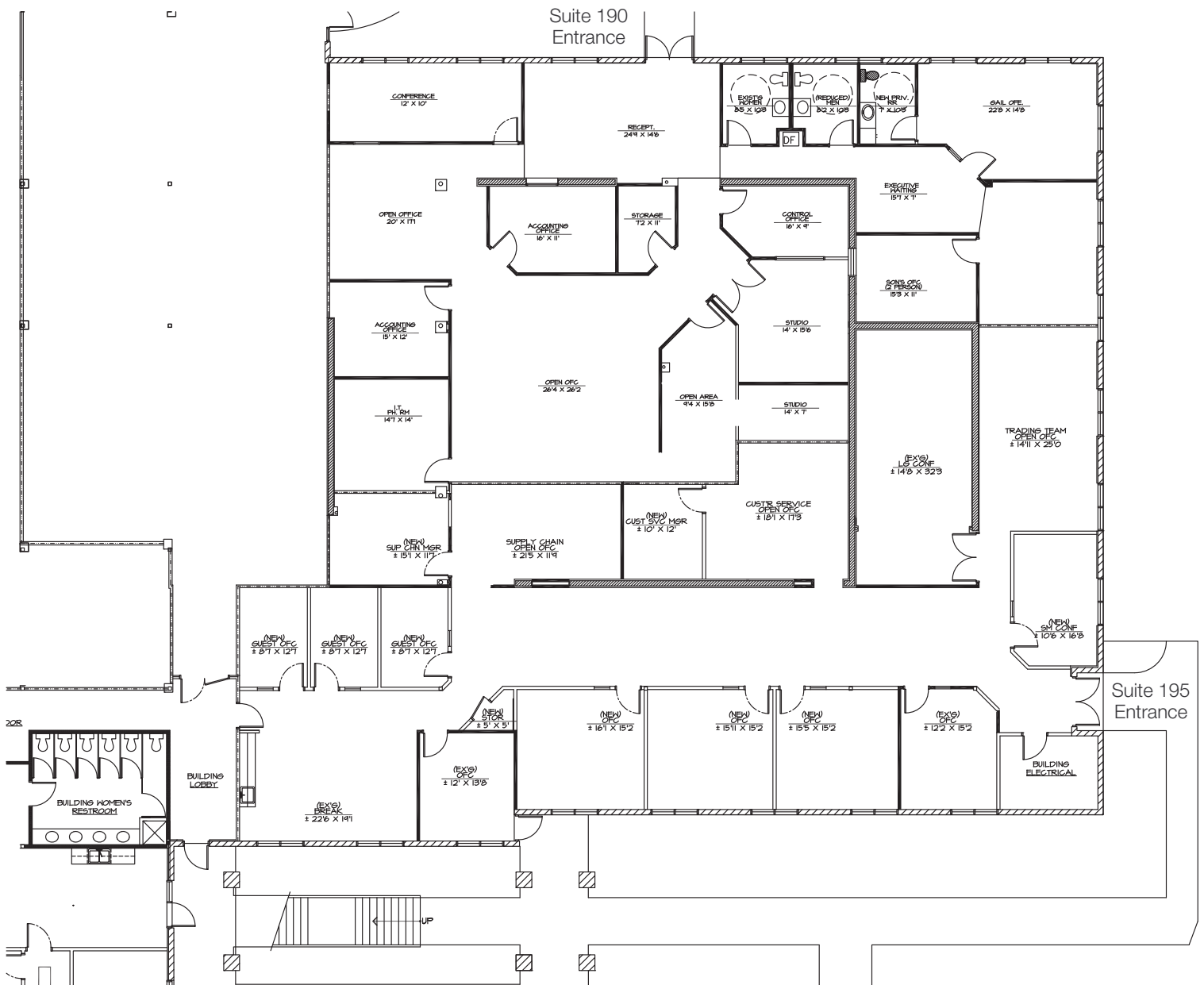
Suite 124 | 1,401 SF



# Floor Plan

# The New Look Pointe Business Plaza

Suite 190 & 195 | 10,529 SF



# Site Plan

## The New Look Pointe Business Plaza



17-04-005