

# Retail Center—1499 E Court St

Seguin, TX 78155-5207 | Guadalupe County

5,822 SF Retail—Strip Ctr Bldg with 1,970 available



**New retail space 1,970 square feet. High traffic, high visibility.**

Property Type: Ret

Building Size: 5,822 sf

Year Built: 2018

Land Area:

Parking Ratio:

Total Available: 1,970 sf

Asking Rate: \$22.00 PSF/YR base +

\$4.50 PSF/YR NNN



Zoning Class: Commercial

Land SF:

Tenancy: Multi- Tenant

Cross Streets: SE/E Court St/Preston Dr

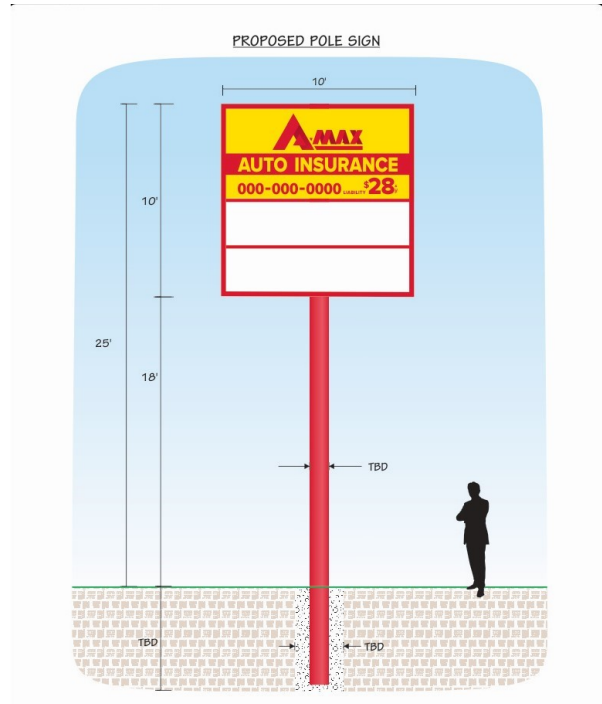
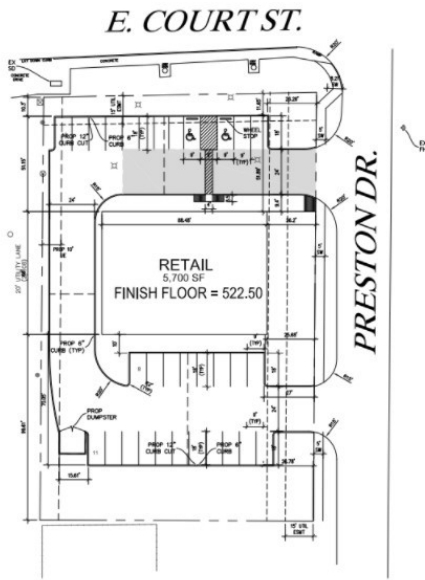
Tyler Flook

214-725-2511

# Retail Center—1499 E Court St

Seguin, TX 78155-5207 | Guadalupe County

5,822 SF Retail—Strip Ctr Bldg with 1,970 available



## Road Map



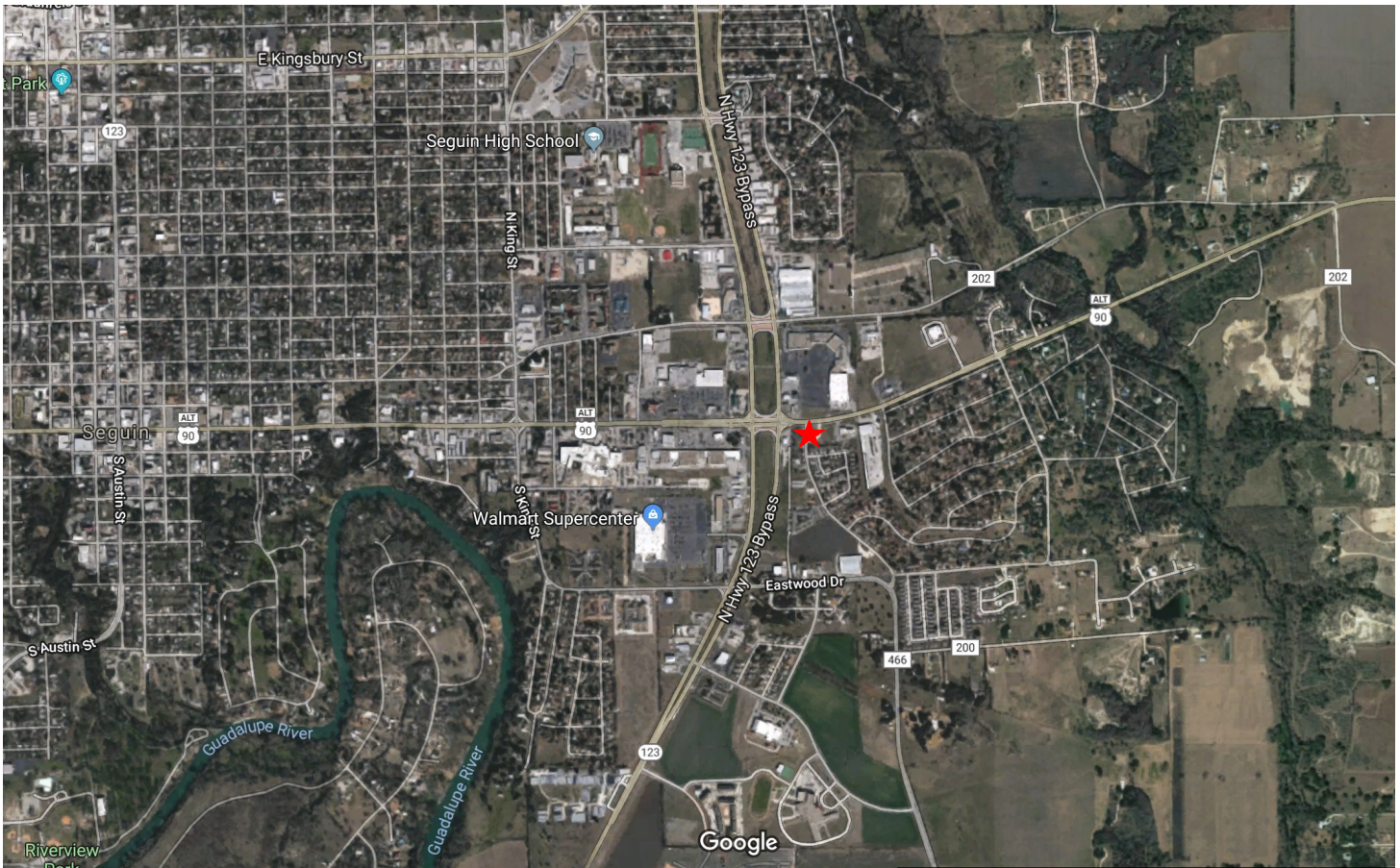
## Retail Center—1499 E Court St

Seguin, TX 78155-5207 | Guadalupe County

5,822 SF Retail—Strip Ctr Bldg with 1,970 available

Unit	SF Available	Max Contig	Min Div	Asking	Vacant	Occupancy	Space Type
#100	1,970	1,970	inquire	inquire	Yes	Now	Shop (End cap)

### Aerial Map



Tyler Flook  
214-725-2511