

1839 DIVISADERO ST, SAN FRANCISCO, CA 94115

FOR LEASE | ± 1,233 SF. OF RETAIL SPACE AVAILABLE

Rental Rate: **\$4,500 per month**

Available: Immediate

Available Space: ± 1,233 SF

Zoning: NC2



FOR MORE INFORMATION PLEASE CONTACT:

JOE HARNEY

joe@rrea.co | 415-235-8214

DRE#01327392



RELIANCE
REAL ESTATE ADVISORS

*With decades of experience as
operators, owners, brokers and investors,
we bring a level of expertise that is unmatched.*

RREA.CO

Reliance Real Estate Advisors. Although all information is furnished regarding sale, rental or financing is from sources deemed reliable, such information has not been verified and no express representation is made nor is any to be implied as to the accuracy thereof, and it is submitted subject to errors, omissions, changes of price, rental or other conditions, prior sale, lease or financing, or withdrawal without notice.

1839 DIVISADERO ST, SAN FRANCISCO, CA 94115

FOR LEASE | ± 1,233 SF. OF RETAIL SPACE AVAILABLE

PROPERTY SUMMARY:

1839 Divisadero Street is located in the heart of San Francisco's vibrant Lower Pacific Heights neighborhood. Known for its eclectic mix of local businesses, cafes, and medical offices, this lively corridor draws steady foot traffic from nearby residents, visitors, and professionals. The area is anchored by its proximity to UCSF Medical Center and is surrounded by a growing collection of retail, dining, and service-based tenants, making it an ideal setting for both neighborhood staples and emerging brands.

This mixed-use property offers a rare opportunity to join a well-established commercial corridor with built-in demand. With a prominent street presence and a strong retail tenant in place, the space is well-positioned for long-term success. Whether for continued investment or future repositioning, 1839 Divisadero presents a strategic foothold in a dynamic San Francisco district where community energy, daily activity, and lifestyle convenience converge.



FOR MORE INFORMATION PLEASE CONTACT:

JOE HARNEY

joe@rrea.co | 415-235-8214

DRE#01327392



RELIANCE
REAL ESTATE ADVISORS

With decades of experience as operators, owners, brokers and investors, we bring a level of expertise that is unmatched.

RREA.CO

Reliance Real Estate Advisors. Although all information is furnished regarding for sale, rental or financing is from sources deemed reliable, such information has not been verified and no express representation is made nor is any to be implied as to the accuracy thereof, and it is submitted subject to errors, omissions, changes of price, rental or other conditions, prior sale, lease or financing, or withdrawal without notice.

1839 DIVISADERO ST, SAN FRANCISCO, CA 94115

FOR LEASE | ± 1,233 SF. OF RETAIL SPACE AVAILABLE

BUILDING AMENITIES:

- +/-1,233 SF
- ADA bathroom under renovation
- High ceilings
- Landlord to work with Tenant on further upgrades to the space
- Formerly occupied by Next Maternity
- Located next to Yuri's Lights and Beyond, The Painters Place Picture Framers, and Galleria D'Edmond. Within a few blocks of the space is UCSF Medical Center, Kasiser, Starbucks, and B patisserie among others.
- \$4,500 per month



FOR MORE INFORMATION PLEASE CONTACT:

JOE HARNEY

joe@rrea.co | 415-235-8214

DRE#01327392



RELIANCE
REAL ESTATE ADVISORS

With decades of experience as operators, owners, brokers and investors, we bring a level of expertise that is unmatched.

RREA.CO

Reliance Real Estate Advisors. Although all information is furnished regarding for sale, rental or financing is from sources deemed reliable, such information has not been verified and no express representation is made nor is any to be implied as to the accuracy thereof, and it is submitted subject to errors, omissions, changes of price, rental or other conditions, prior sale, lease or financing, or withdrawal without notice.

1839 DIVISADERO ST, SAN FRANCISCO, CA 94115

FOR LEASE | ± 1,233 SF. OF RETAIL SPACE AVAILABLE



FOR MORE INFORMATION PLEASE CONTACT:

JOE HARNEY

joe@rrea.co | 415-235-8214

DRE#01327392



RELIANCE
REAL ESTATE ADVISORS

With decades of experience as operators, owners, brokers and investors, we bring a level of expertise that is unmatched.

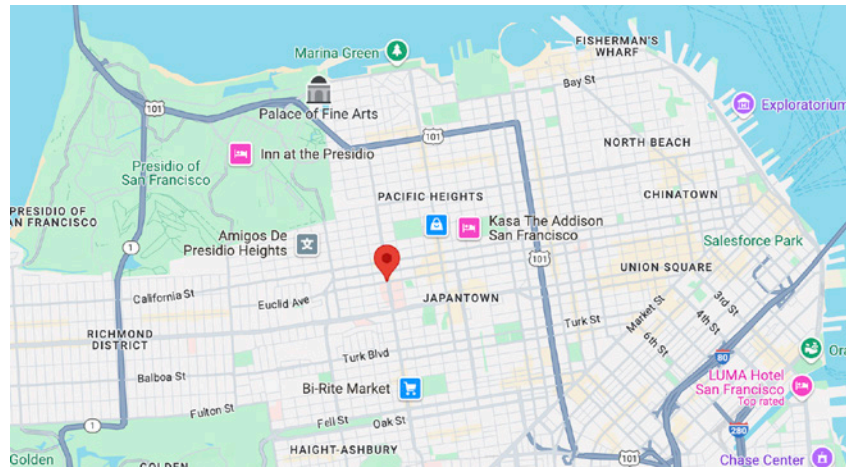
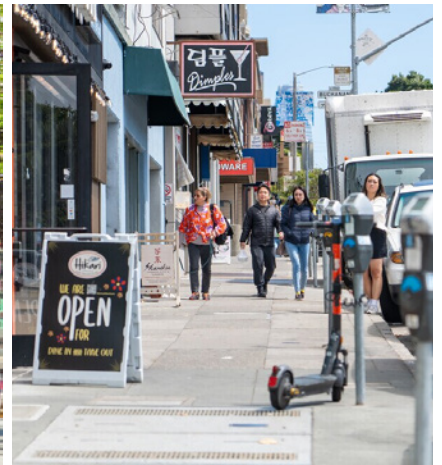
RREA.CO

Reliance Real Estate Advisors. Although all information is furnished regarding for sale, rental or financing is from sources deemed reliable, such information has not been verified and no express representation is made nor is any to be implied as to the accuracy thereof, and it is submitted subject to errors, omissions, changes of price, rental or other conditions, prior sale, lease or financing, or withdrawal without notice.

1839 DIVISADERO ST, SAN FRANCISCO, CA 94115

FOR LEASE | ± 1,233 SF. OF RETAIL SPACE AVAILABLE

1839 Divisadero Street is situated in the heart of Lower Pacific Heights, a lively neighborhood between Pacific Heights and Japantown. This area blends historic charm with modern convenience, featuring tree-lined residential streets, updated housing, and active commercial corridors. Along Fillmore and Divisadero Streets, you'll find an eclectic mix of boutiques, specialty shops, cozy cafés, and highly regarded restaurants. Beloved by locals and visitors alike, Lower Pacific Heights offers a uniquely vibrant shopping and dining experience.



FOR MORE INFORMATION PLEASE CONTACT:

JOE HARNEY

joe@rrea.co | 415-235-8214

DRE#01327392



RELIANCE
REAL ESTATE ADVISORS

With decades of experience as operators, owners, brokers and investors, we bring a level of expertise that is unmatched.

RREA.CO

Reliance Real Estate Advisors. Although all information is furnished regarding for sale, rental or financing is from sources deemed reliable, such information has not been verified and no express representation is made nor is any to be implied as to the accuracy thereof, and it is submitted subject to errors, omissions, changes of price, rental or other conditions, prior sale, lease or financing, or withdrawal without notice.