

0.43± AC OF LAND AVAILABLE

COMMERCIAL LAND NEXT TO NATIONAL RETAILER

PANHANDLE REGION OF FL | 93 Madison Street, Freeport, FL 32439



PROPERTY FEATURES

- Next to brand new Family Dollar/Dollar Tree Combo store
- Located off Main Street with close proximity to town center
- 4 Miles from Freeport High School
- Sale and development opportunities available
- Parcel #: 15-1S-19-23040-008-0101
- Zoning: Commercial
- **Land Area: 0.43 Acres**
- Available for sale, ground lease or BTS

DEMOGRAPHICS

	3 MILE	5 MILES	10 MILES
POPULATION	1,390	7,737	11,282
NO. OF HOUSEHOLDS	462	2,949	4,339
FAMILIES	317	2,027	2,927
AVG. HH INCOME	\$86,790	\$90,578	\$85,512

JOIN AREA RETAILERS



For more information, contact:

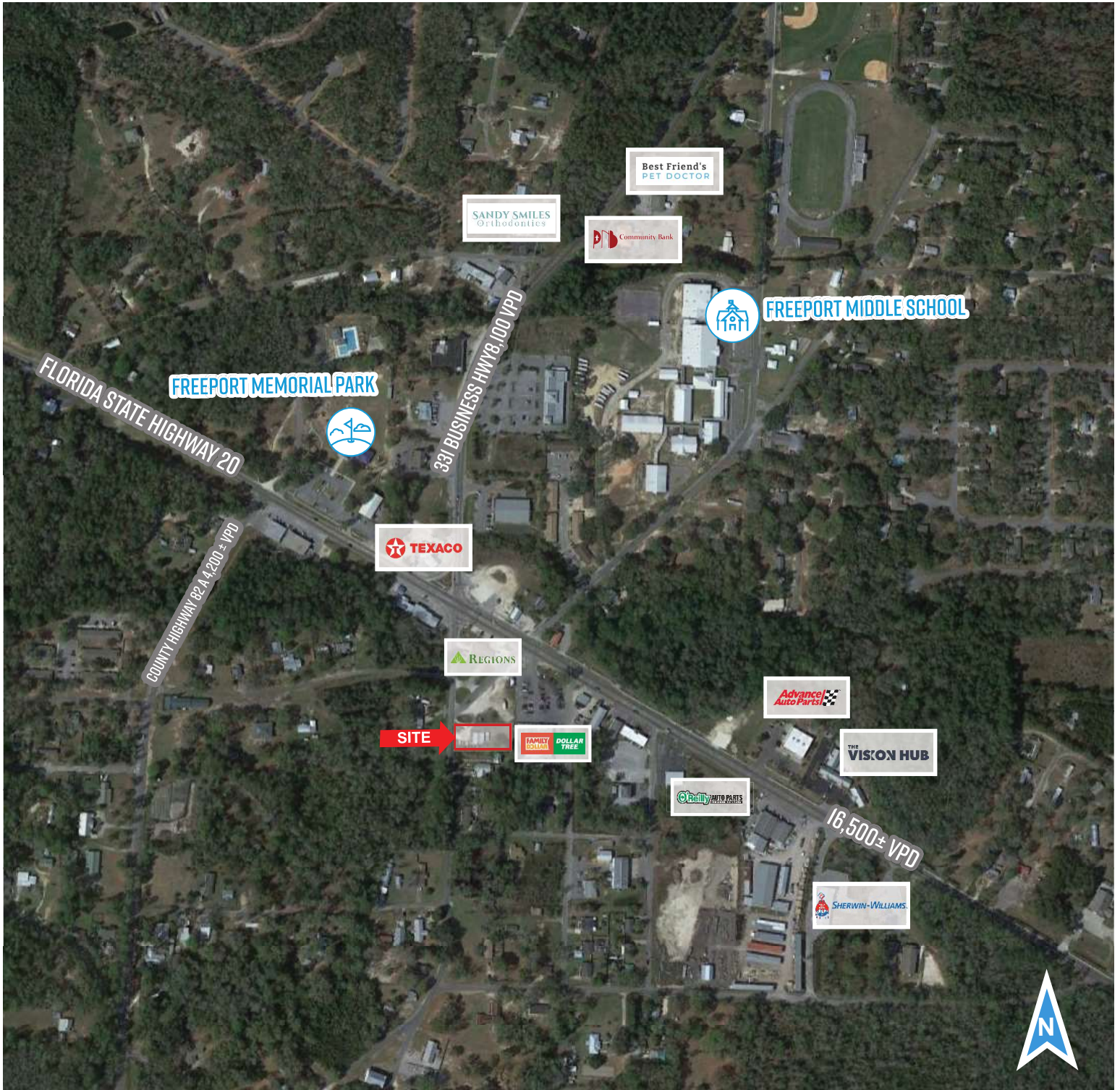
JOE BOYD, CSM / CMD | VP, ASSET AND PROPERTY MANAGEMENT
 843.973.8283
 joe@twinriverscap.com

TWIN RIVERS CAPITAL
 656 Ellis Oak Avenue, Suite 201
 Charleston, SC 29412
 twinriverscap.com

0.43± AC OF LAND AVAILABLE

COMMERCIAL LAND NEXT TO NATIONAL RETAILER

PANHANDLE REGION OF FL | 93 Madison Street, Freeport, FL 32439



For more information, contact:

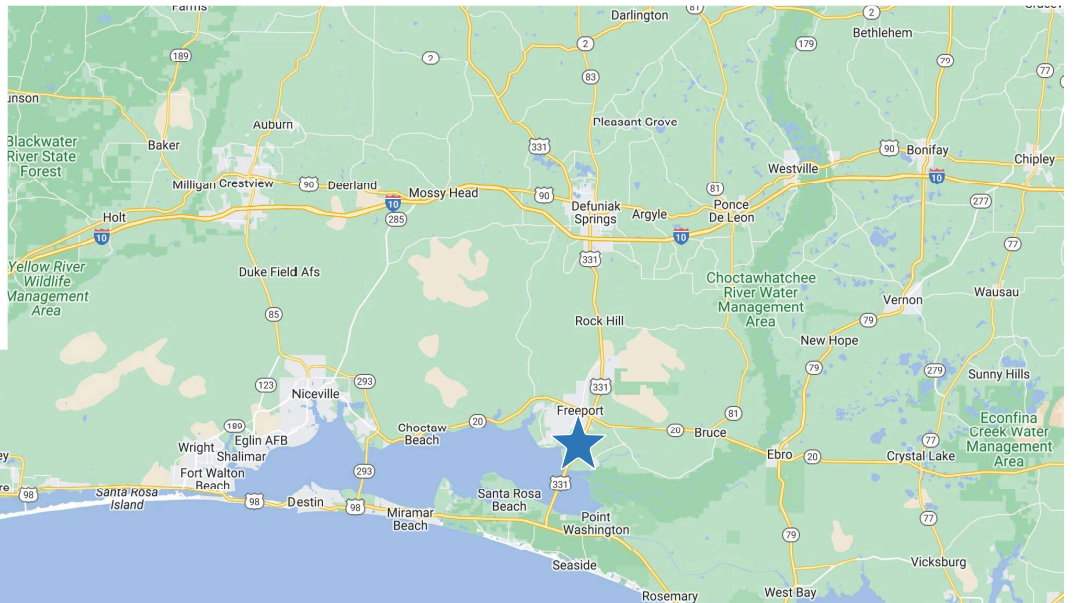
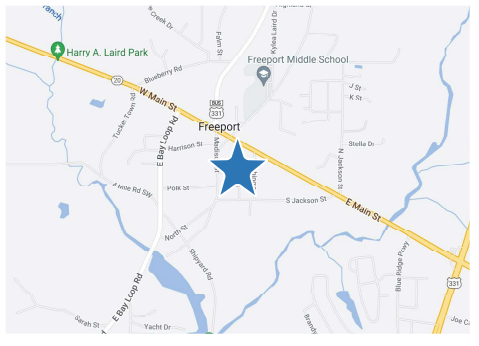
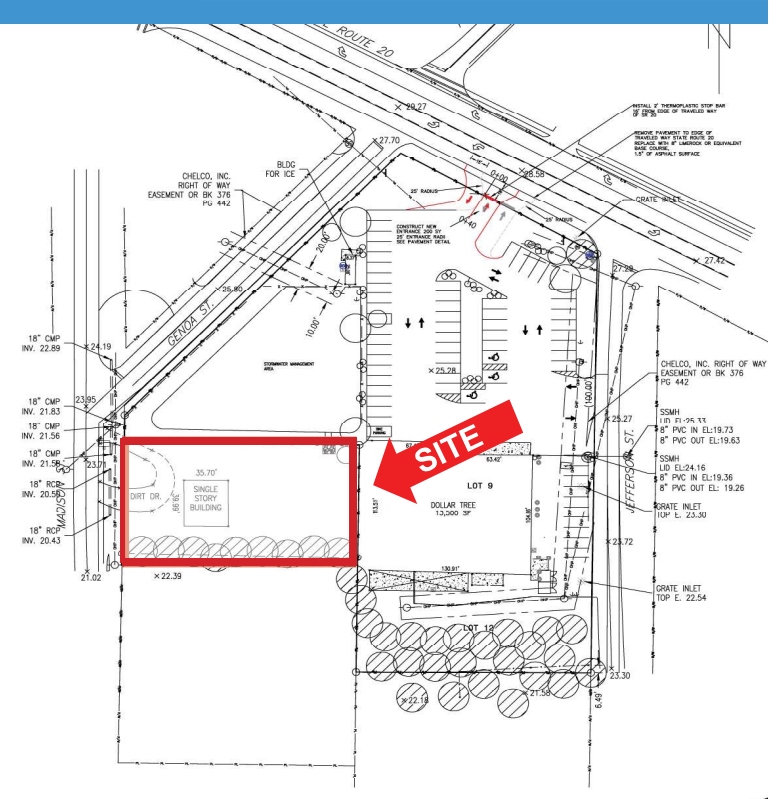
JOE BOYD, CSM / CMD | VP, ASSET AND PROPERTY MANAGEMENT
843.973.8283
joe@twinriverscap.com

TWIN RIVERS CAPITAL
656 Ellis Oak Avenue, Suite 201
Charleston, SC 29412
twinriverscap.com

0.43± AC OF LAND AVAILABLE

COMMERCIAL LAND NEXT TO NATIONAL RETAILER

PANHANDLE REGION OF FL | 93 Madison Street Freeport, FL 32439



For more information, contact:

JOE BOYD, CSM / CMD | VP, ASSET AND PROPERTY MANAGEMENT
843.973.8283
joe@twinriverscap.com

TWIN RIVERS CAPITAL
656 Ellis Oak Avenue, Suite 201
Charleston, SC 29412
twinriverscap.com