



FOR LEASE

RICHMOND SQUARE

4 RICHMOND SQUARE • PROVIDENCE, RI 02906

CBRE

PROPERTY DESCRIPTION

CBRE is pleased to offer space for lease at Richmond Square in Providence, Rhode Island. Less than two miles to the hospitals, Richmond Square is central to the East Side's thriving medical and academic district.

Brown University is nearby, as are many popular amenities such as Wayland Square and Eastside Market.

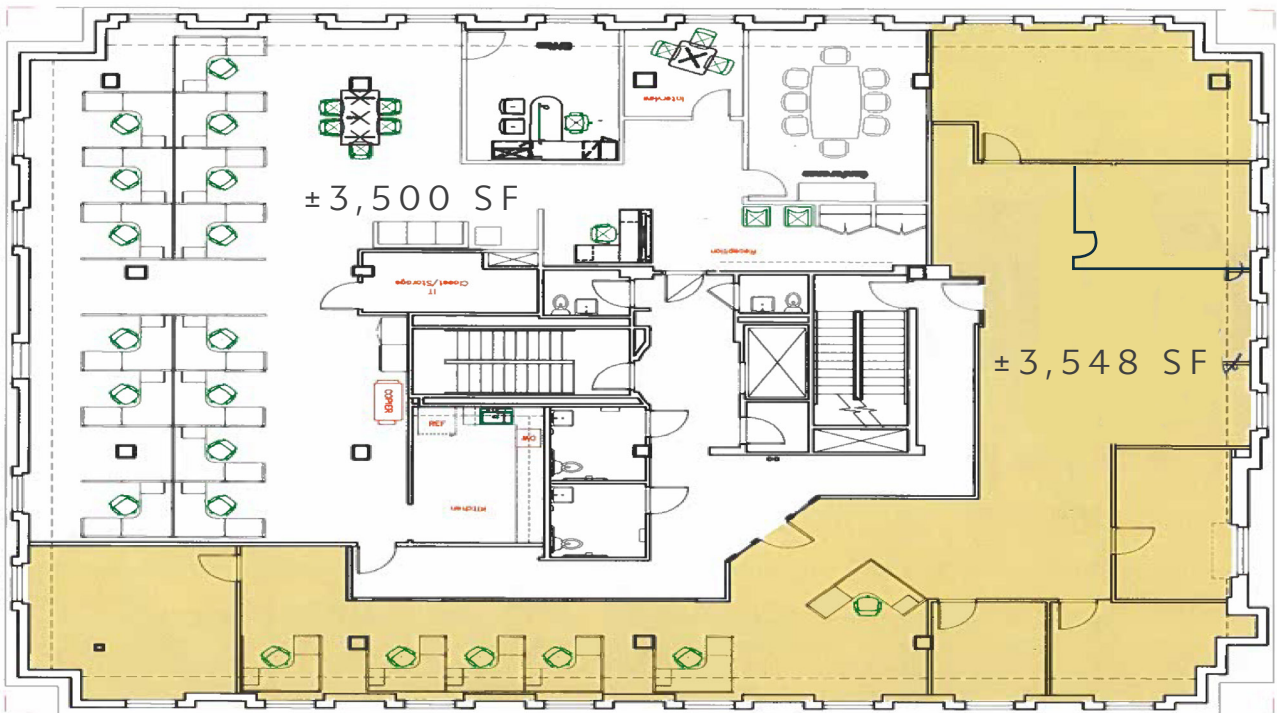
Richmond Square is also adjacent to the Henderson Bridge, which connects the East Side to East Providence in less than one minute.

HIGHLIGHTS

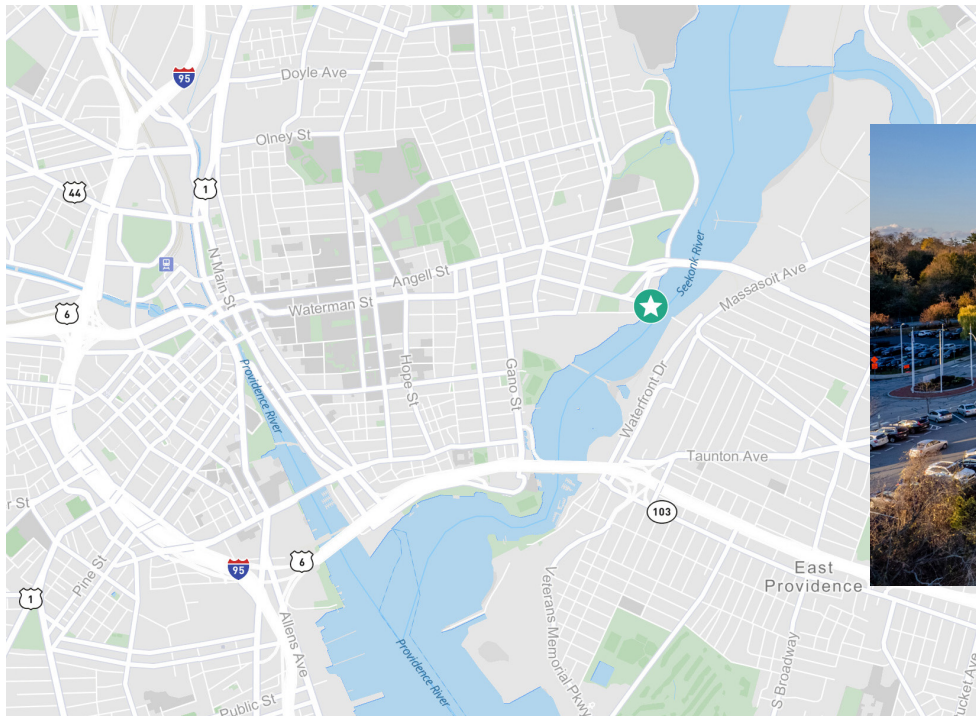
- + ±3,500-7,048 SF Available
- + Waterfront office complex on Providence's prestigious East Side
- + Two miles to downtown Providence, half a mile to Brown University and RISD
- + Excellent access to Interstates 95 and 195
- + Ample free parking
- + On-site building management
- + On-site restaurant
- + Short walk to numerous amenities
- + Potential freestanding medical office building
- + Recent renovations:
 - Café: One Richmond Square
 - Lobby: One and Four Richmond Square
 - HVAC: Updated HVAC/mechanical equipment

FLOOR PLAN

FOUR RICHMOND SQUARE: ±3,500-7,048 SF AVAILABLE



LOCATION



4 RICHMOND SQUARE
±3,500-7,048 SF AVAILABLE

FOR LEASE

RICHMOND SQUARE

4 RICHMOND SQUARE • PROVIDENCE, RI 02906

CONTACT US

JOHN CREGAN

Vice President
+1 401 621 4335
john.cregan@cbre.com

ANDREW GALVIN

Senior Vice President
+1 401 330 1915
andrew.galvin@cbre.com

CBRE

© 2023 CBRE, Inc. All rights reserved. This information has been obtained from sources believed reliable, but has not been verified for accuracy or completeness. You should conduct a careful, independent investigation of the property and verify all information. Any reliance on this information is solely at your own risk. CBRE and the CBRE logo are service marks of CBRE, Inc. All other marks displayed on this document are the property of their respective owners, and the use of such logos does not imply any affiliation with or endorsement of CBRE. Photos herein are the property of their respective owners. Use of these images without the express written consent of the owner is prohibited.