

PELICAN REEF 



0 SOUTH OCEAN DRIVE
HUTCHINSON ISLAND, FL | 34949





7 EXCLUSIVE BEACHFRONT RESIDENCES

PRIVATE BEACHFRONT HOMES

Nestled along the Atlantic Ocean, Pelican Reef on Hutchinson Island is a secluded gated community featuring seven private residences offering a true beachfront sanctuary in the modern world. There are places you'd love to live, the places you could never dream of leaving, and then there are the homes at Pelican Reef.

These contemporary modern homes provide unmatched panoramic ocean views, uncompromising luxury. From a six-car garage to spacious bonus areas perfect for a home theater, gym, and more, your home at Pelican Reef has the flexibility to become the personal oasis you've always dreamed of owning.

QUARTER MILE OF BEACH

Unlike any other oceanfront property in Florida, the residents of Pelican Reef can enjoy a quarter mile of pristine, private beach. Enjoy horseback riding on the sand, paddleboarding, and some of the best snorkeling and scuba diving around. Even from your home's interior the seamless ocean views remind you that your personal ocean escape is your backyard.



7 LUXURY BEACHFRONT HOMES

THE PERFECT PLACE TO CREATE YOUR DREAM HOME

Boasting ready-to-build lots of land ranging in size from 5,100 to over 7,100 square feet, our exclusive oceanfront properties offer homeowners plenty of space to build out their luxury beach home. Pelican Reef is situated in a quiet area on the coast between a marine-life reserve and a quiet residential neighborhood, giving residents the perfect peaceful escape that they have been dreaming of.

Our residents enjoy private access to miles of gorgeous, untouched Hutchinson Island beach without ever having to leave the comfort of their own backyards. Lush landscaping made up of a combination of both native and foreign plants gives our properties the feel of being in your own island paradise while also offering an additional layer of privacy for residents and their families.

Located away from the traffic and congestion of most of South Florida, our secure, gated community offers a remote feel while still being close enough to A1A, I-95, and the many bars, restaurants, and activities available in Hutchinson Island.









Lots are available for purchase. Images represent residences that may be built in accordance with the community's architectural guidelines.







MODELS OCEAN REEF & CORAL REEF

1

FLOOR 1

MULTI-CAR GARAGE
FLEX SPACE
AMPLE GROUND FLOOR STORAGE



2

FLOOR 2

RESORT STYLE POOL WITH SPA & SUN-SHELF
OPEN CONCEPT KITCHEN | GUEST ROOM
FIREPLACE | 1 FULL & 2 HALF BATH
DEN OR OFFICE



3

FLOOR 3

MASTER SUITE WITH HIS & HERS WALK-IN-CLOSET
3 BEDROOMS WITH PRIVATE FULL BATHS
LOUNGE | 3 TERRACES



MODEL BARRIER REEF

1

FLOOR 1

MULTI-CAR GARAGE
FLEX SPACE
AMPLE GROUND FLOOR STORAGE



2

FLOOR 2

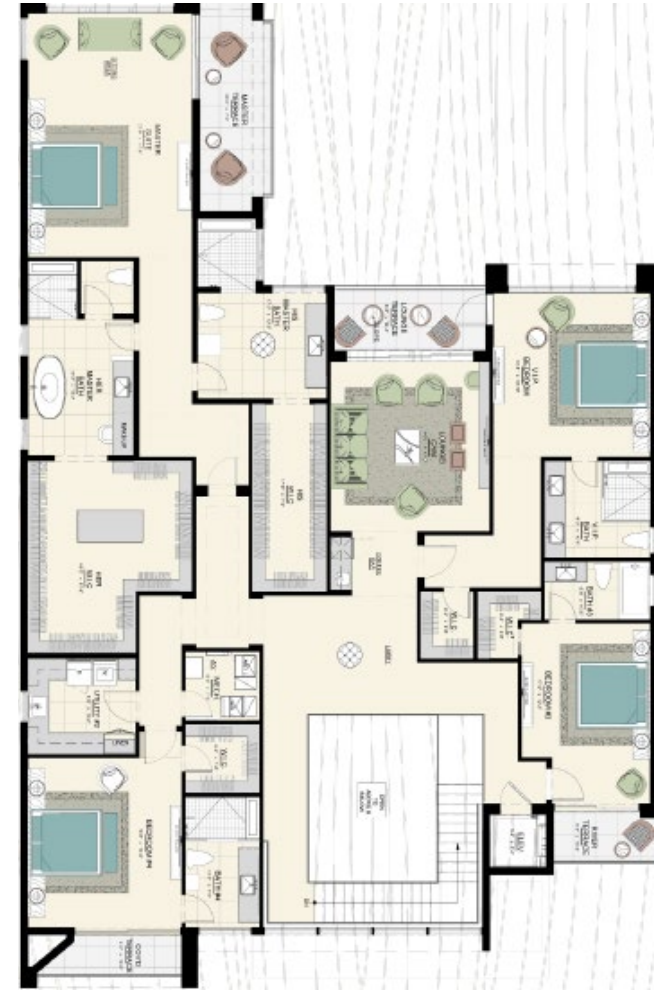
RESORT STYLE POOL WITH SPA & SUN-SHELF
OPEN CONCEPT KITCHEN | GUEST ROOM
FIREPLACE | 1 FULL & 2 HALF BATH | DEN OR OFFICE



3

FLOOR 3

MASTER SUITE WITH HIS & HERS WALK-IN-CLOSET
3 BEDROOMS WITH PRIVATE FULL BATHS
LOUNGE | 3 TERRACES





7 LOTS WITH PRIVATE SLIPS

DUAL HORIZONS

This limited enclave of seven luxury estates spans the full width of the barrier island, offering a lifestyle defined by dual-waterfront access and the preserved beauty of the coastal landscape. Residents enjoy direct, private access to the pristine Atlantic coastline at their eastern doorstep and a secluded natural sanctuary to the west. A private, elevated boardwalk stretches to the river through lush, protected mangroves, leading directly to four private docks with seven dedicated slips.

Development Note: Dock and slip approvals are currently in-progress to ensure the highest standards of environmental and maritime integration.





A PRISTINE ISLAND OASIS WITH UNPARALLELED CHARM



THE BEACH AND WILDLIFE

Located on the east coast of Florida, Hutchinson Island is a barrier island stretching from Stuart to Fort Pierce. Though the island has everything you need from ocean excursions to shopping, much of Hutchinson Island remains as natural as the day it was discovered. The untouched environments of the island create a remarkable sanctuary for wildlife. When walking the beach, snorkeling in the warm waters, or even relaxing on one of your private ocean view balconies, you could catch a glimpse of the magnificent dolphins, sea turtles, stingrays, manatees, and more that call Hutchinson Island home.

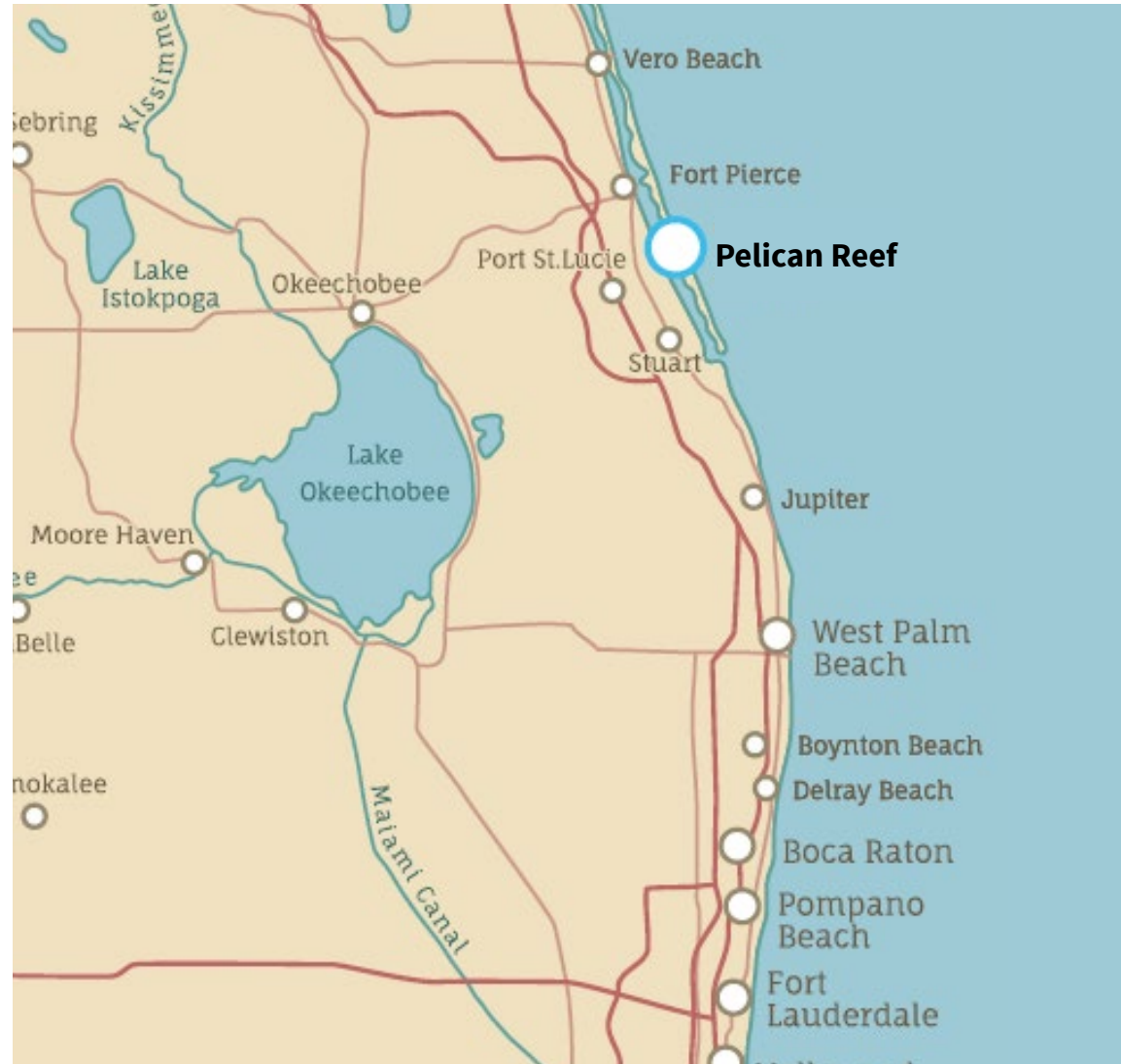
A REMARKABLE NEIGHBORHOOD

A sunset beach stroll with glass of wine in hand. Sea turtle tracks in the morning sand. Abundant wildlife, endless activities and entertainment, art galleries, museums, dining and more. Hutchinson Island has everything you could ever dream of for the place you call home.

FOOD. CULTURE. ENTERTAINMENT

Whether you're looking for an atmosphere that's laid back, lively, or something in between, Hutchinson Island and its surrounding areas has something for everyone. Amazing shopping, seafood, beach bars and live music are all just a short trip away from your new home at Pelican Reef.

The island has plentiful entertainment opportunities From boat and fishing charters, wine tours, art galleries and museums, golf courses, and more. This wonderful variety of activities, restaurants, and culture brings truth to the area's namesake, solidifying Hutchinson Island as the true hidden treasure on the Treasure Coast.



NEARBY COMMUNITIES

- **Jensen Beach** - 10 miles
- **Fort Pierce** - 5 miles
- **Stuart** - 16 miles
- **Palm Beach** - 40 miles

NEARBY AIRPORTS

- Treasure Coast International Airport and Business Center (FPR) - 15 miles
- Witham Field Airport (SUA) - 20 miles
- Palm Beach International Airport (PBI) - 60 miles



SVEN FRISELL
REALTOR



COMPASS

sven@myreynoldsteam.com

sven.myreynoldsteam.com

772-480-9009



PELICAN REEF 