

Neal Turner Realty

Commercial and Industrial Brokerage

Available For Lease
Multi Tenant Office
1,244 to 4,000 Sq. Ft.

1300 Andrea

Bowling Green, KY



PROPERTY HIGHLIGHTS

- 25,000 Total Square Feet Situated on 2 Floors With Elevator Access
- Large Common Area With Bathrooms
- 1st and 2nd Floor Availability
- Located Across from Greenview Hospital
- Medical and Non-Medical Use Configurations
- Over 115 Parking Spaces
- Conveniently Located Just Off of Scottsville Road Near Hartland
- Lobby Recently Renovated

PRICING

\$17 (2nd Floor) - \$20 (1st Floor) Per Rentable SF
(Rent Includes, Utilities, Taxes, Property Insurance,
Common area Maintenance, Dumpster Service and
Exterior Maintenance)



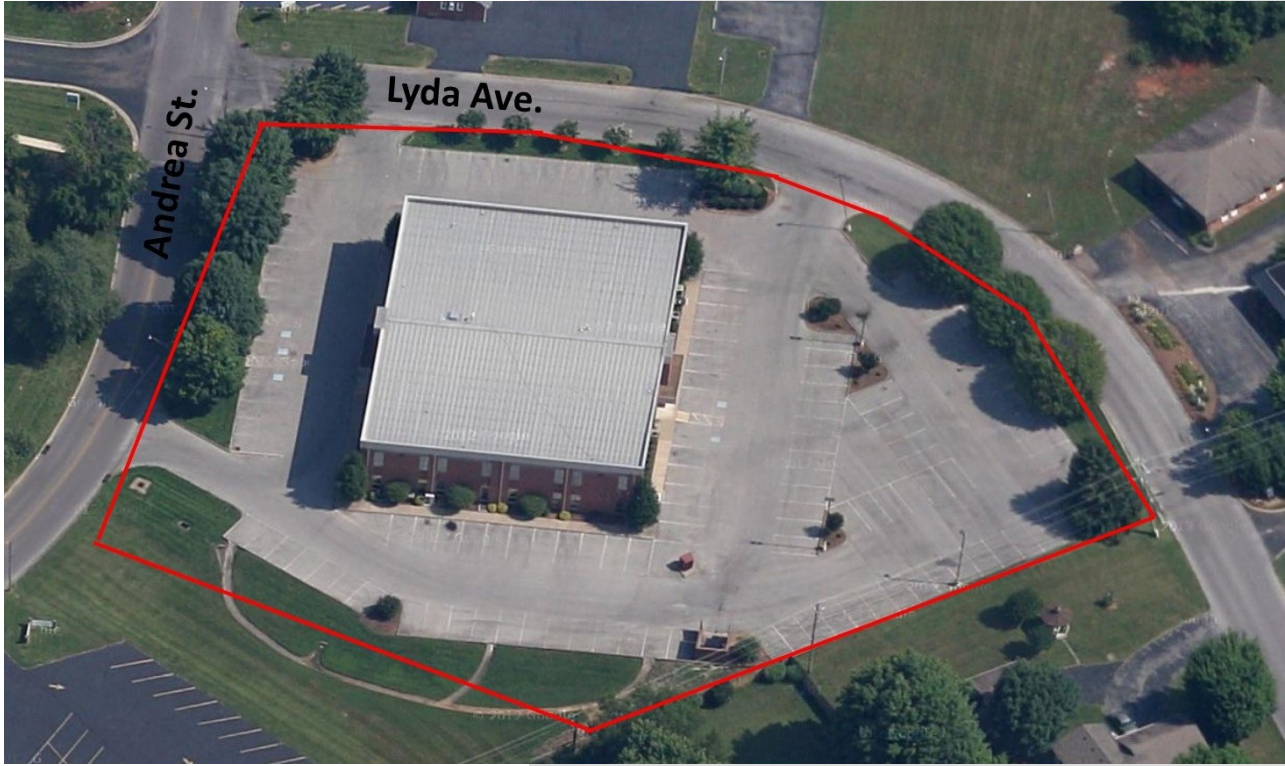
For Information Contact:

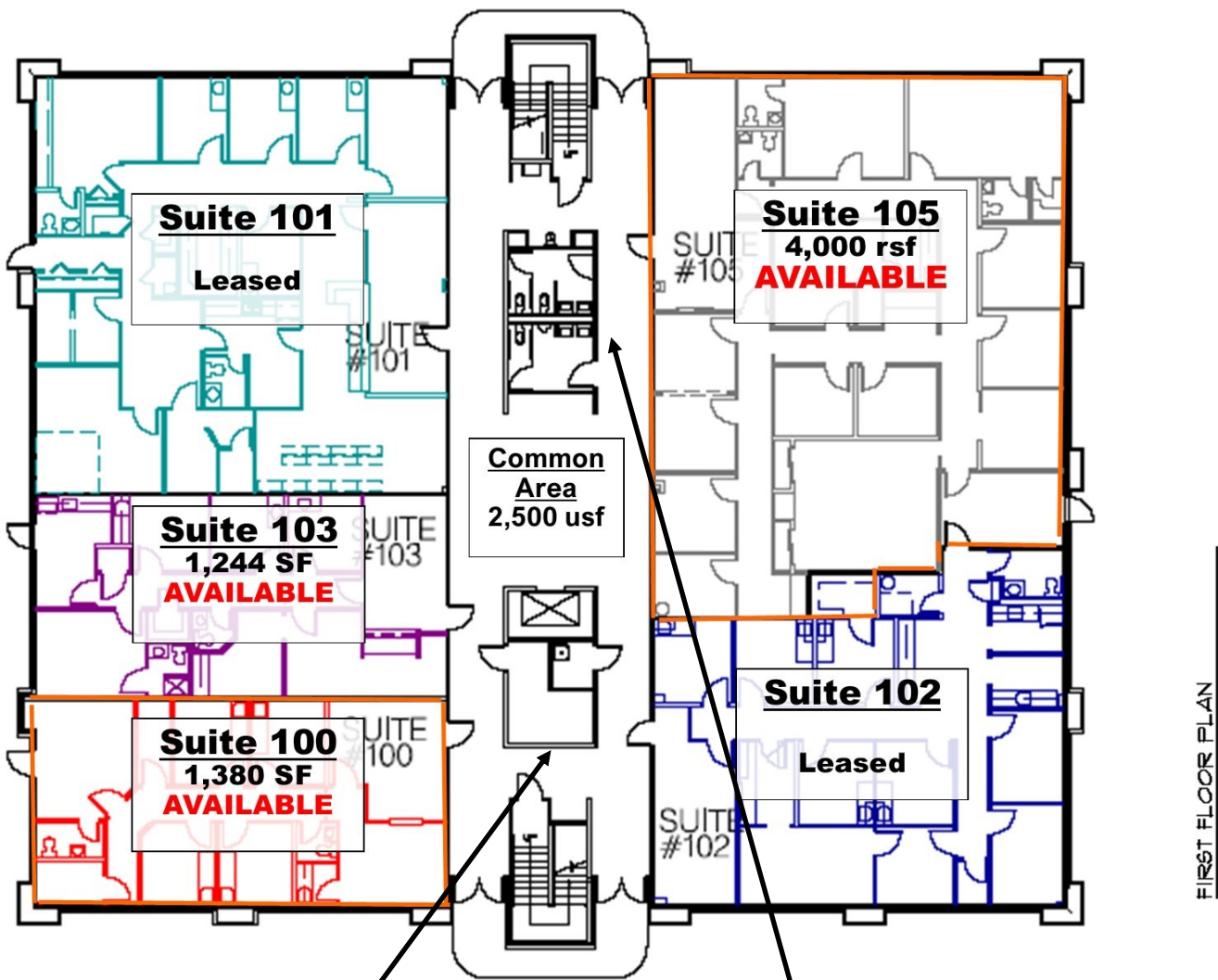
Neal Turner Realty
Alex Nottmeier, CCIM, SIOR
(270) 781-8000 Ext. 1
Alex@NTRCommercial.com

1401 Scottsville Road
Bowling Green, KY 42104
www.NTRCommercial.com



All information furnished herein regarding property for sale, lease, or financing is from sources deemed reliable, but no warranty or representation is made as to the accuracy thereof and same is to be submitted subject to errors, omission, change of price of sale or lease or other conditions prior to sale or lease. No liability of any kind is to be imposed to be imposed upon the Seller or Broker herein.



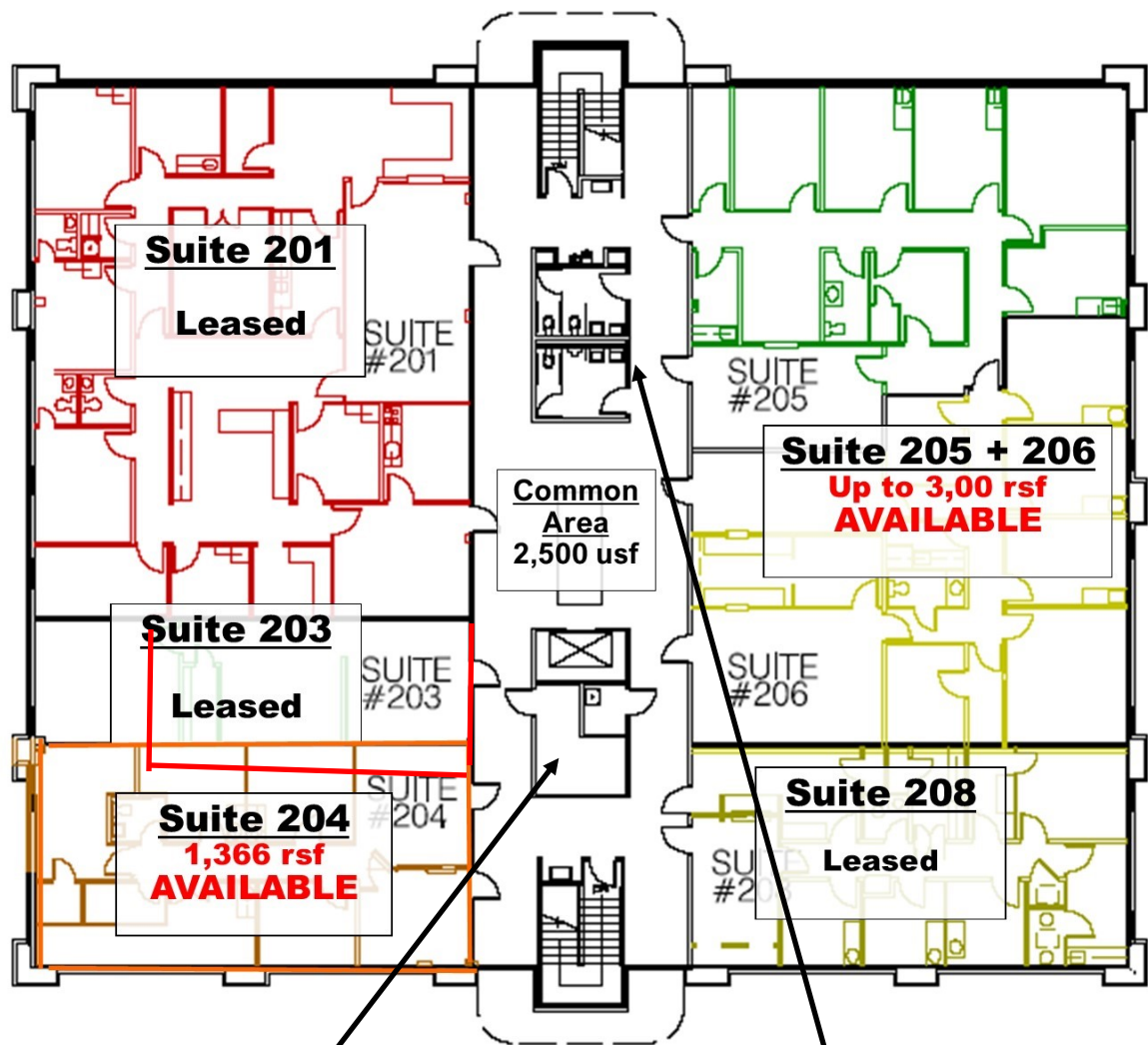


New Flooring and Wall Covering



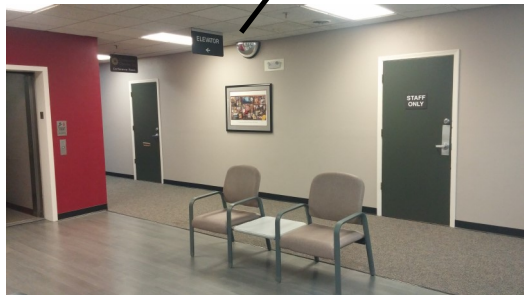
Updated Common Area Bathrooms

All information furnished herein regarding property for sale, lease, or financing is from sources deemed reliable, but no warranty or representation is made as to the accuracy thereof and same is to be submitted subject to errors, omission, change of price of sale or lease or other conditions prior to sale or lease. No liability of any kind is to be imposed to be imposed upon the Seller or Broker herein.

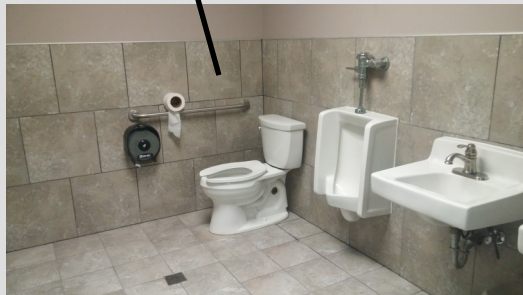


SECOND FLOOR PLAN

January 2013



New Flooring and Wall Covering



Updated Common Area Bathrooms