

WAIKIki BUILDING FOR LEASE

2240 WAIKOLU WAY, HONOLULU, HI 96815





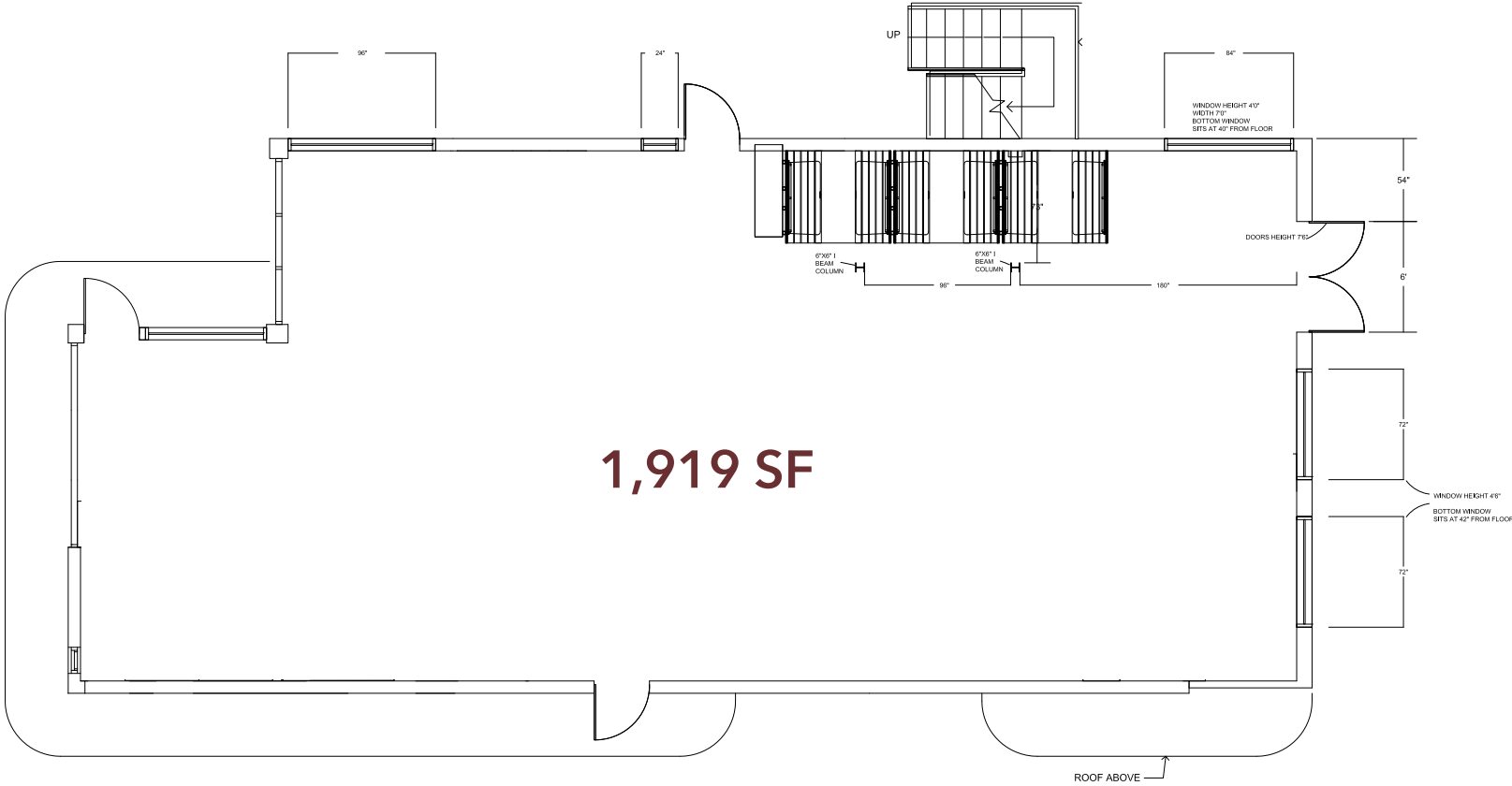
WAIKIKI MAP



LEASE DETAILS

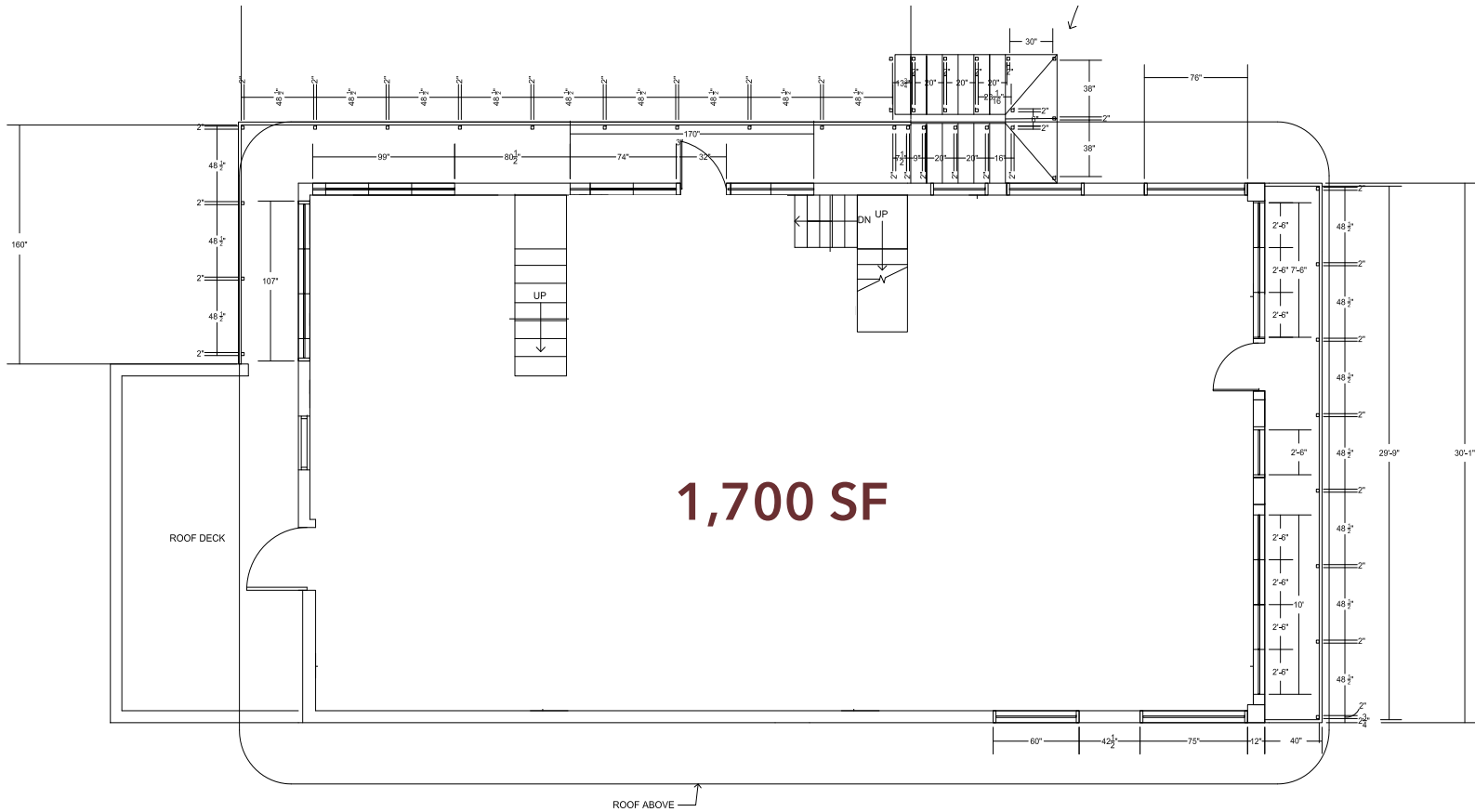
LOCATION	2240 Waikolu Way Honolulu, HI 96815
SIZE	1st Floor: 1,919 SF 2nd Floor: 1,700 SF 3rd Floor: 643 SF Total: 4,262 SF
AVAILABLE	Immediately
TERM	Negotiable
BASE RENT	Contact Agent
CAM	\$2.25 PSF/Mo
ZONING	Resort Mixed Use
HIGHLIGHTS	<ul style="list-style-type: none">• Multi-use property• Restaurant opportunity• 750 Gallon grease trap• Entire building available• Roof-top deck

FLOOR PLAN **GROUND FLOOR**

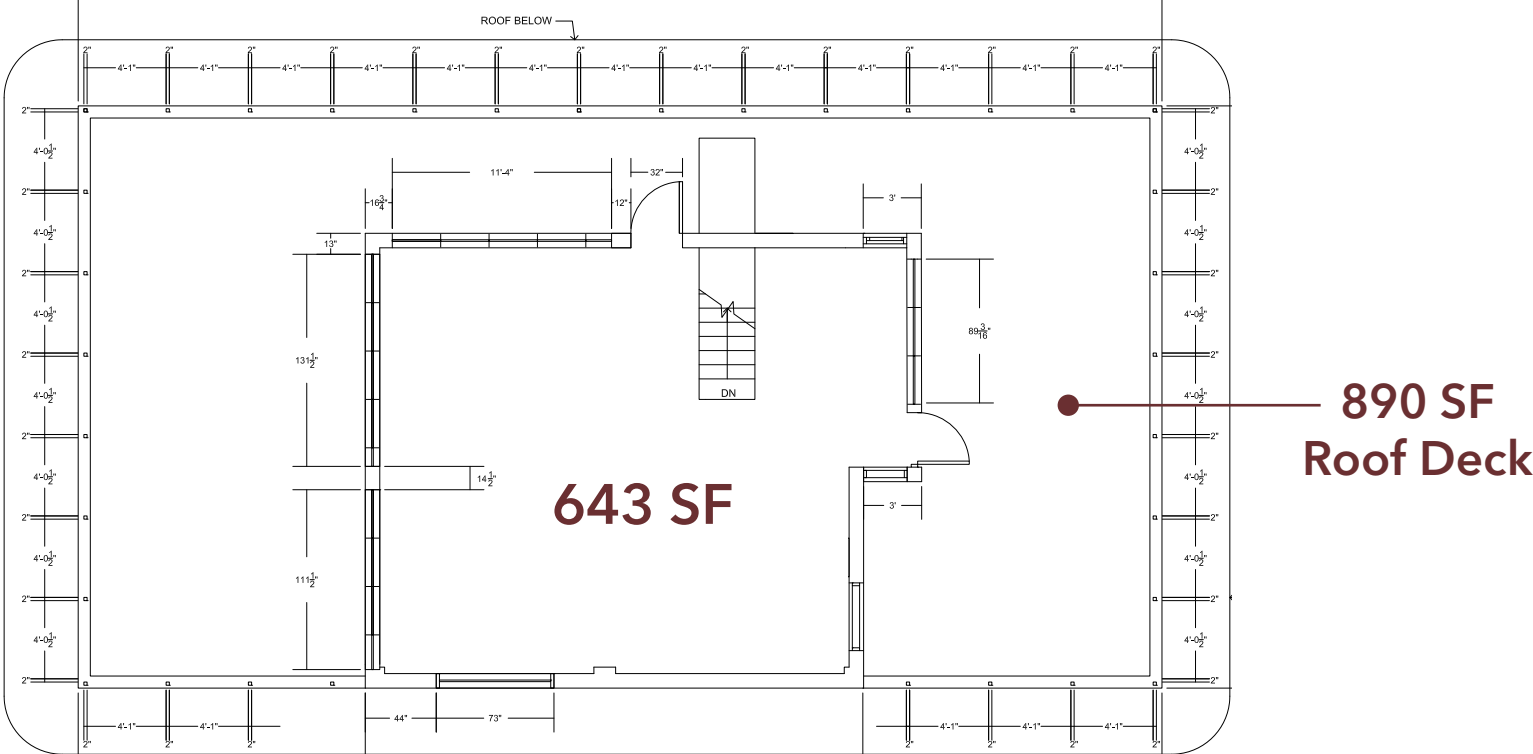


1,919 SF

FLOOR PLAN SECOND FLOOR



FLOOR PLAN THIRD FLOOR



WAIKIKI MARKET HIGHLIGHTS



- 30,787 visitor lodging units, including 22,731+ hotel rooms
- Average Daily Visitor Population on-island: 99,194
- Average Daily Local Population: 30,441 residents and 21,869 employees
- 1.5 - 1.7 Million Square Feet of Retail GLA
- Dior, Louis Vuitton, Gucci, Chanel, Hermès, Rolex, Yves Saint Laurent, Fendi, Balenciaga, Tiffany & Co., Valentino, Bottega Veneta, Prada, Moncler, Tesla, Jimmy Choo, Kith, Harry Winston, Salvatore Ferragamo, Apple, DFS, H&M, Urban Outfitters, Sephora, Victoria's Secret, UGG, Ross, Macy's, Quiksilver, Rip Curl, Volcom and many more
- Waikiki Restaurants: The Cheesecake Factory, Tommy Bahama, P.F. Chang's, Hard Rock Cafe, Ruth's Chris Steak House, Yard House, Duke's Waikiki, Maui Brewing Co., Roy's, California Pizza Kitchen, Paia Fish Market, StripSteak Waikiki, Marugame Udon, Poké Bar, Morimoto Asia and many more

This document has been prepared by The Beall Corporation for advertising and general information only. The Beall Corporation makes no guarantees, representations or warranties of any kind, expressed or implied, regarding the information including, but not limited to, warranties of content, accuracy and reliability. Any interested party should undertake their own inquiries as to the accuracy of the information. The Beall Corporation excludes unequivocally all inferred or implied terms, conditions and warranties arising out of this document and excludes all liability for loss and damages arising there from. This publication is the copyrighted property of The Beall Corporation and/or its licensor(s). © Copyright 2023, All rights reserved.



Scan or visit eepurl.com/c2rzHH to sign up for The Beall Corporation Newsletters and stay on top of Hawaii's Commercial Real Estate News

WWW.THEBEALLCORPORATION.COM

1120 12TH AVENUE, SUITE 301 | HONOLULU, HI 96816

BEALL CORP
RETAIL REAL ESTATE