

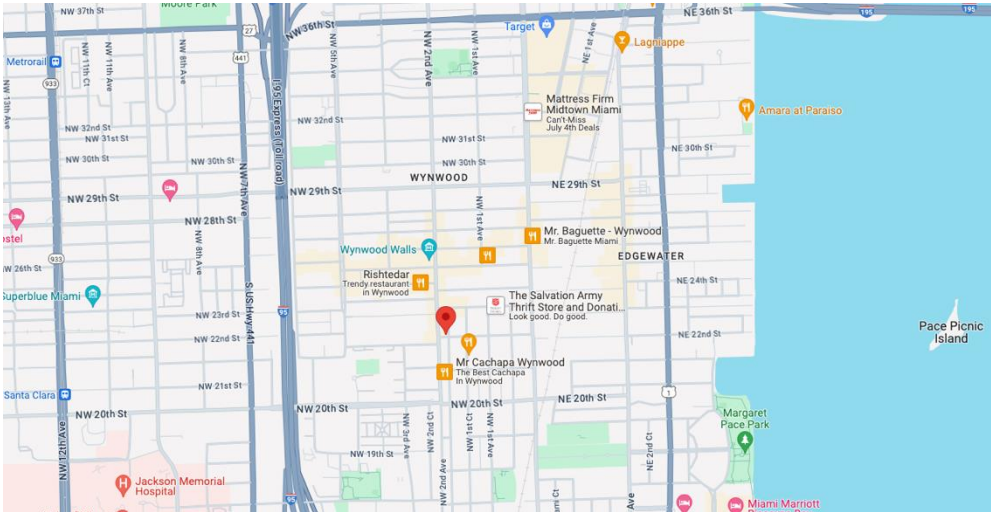


FOR LEASE

SoWy Urban Campus – Building 1

2021-2043 NW 1st Place, Miami, FL 33127

EXECUTIVE SUMMARY



OFFERING SUMMARY

Availability:	Upon Request
Building Conditions:	Warm V-Shell
Unit 1F:	1,800 SF
Unit 1I:	2,166 SF
Unit 1J:	719 SF
Unit 1K:	983 SF

PROPERTY OVERVIEW

DWNTWN Realty Advisors has been retained exclusively to arrange the leasing of the SoWy Portfolio in Miami, FL. Located along NW 2nd Avenue, one of Wynwood’s main arteries with 8,000 VPD, this leasing opportunity is in the heart of the SoWy urban campus, a creative environment ideal for innovative offices, art gallery, modern F&B concepts, creative retail uses and more. The condition of the units are warm V-Shell with white walls and polished concrete finishes. The units also have working HVAC, bathrooms, impact fees paid with good exterior lighting, ideal to showcase murals. This portfolio represents the opportunity to acquire a footprint in one of Miami’s highest growth neighborhoods with strong leasing demand. There are currently 28 development projects in Wynwood, totaling 3,227 residential units, 192 hotel rooms, 662k SF of office space and 361k SF of retail space.

PROPERTY HIGHLIGHTS

- Located In The New SoWy Urban Campus
- Ideal For Innovate Offices, Art Gallery, Modern F&B Concepts, Creative Retail Uses, And More
- The Units Are In Warm V-shell Condition

Tony Arellano P.A. // Managing Partner
ta@dwntwnrealtadvisors.com // (P) 786.235.8330

David Lerner // Executive
dl@dwntwnrealtadvisors.com // (P) 786.706.7061

Devlin Marinoff // Managing Partner & Broker
dm@dwntwnrealtadvisors.com // (P) 305.909.7343

DWNTWN REALTY ADVISORS
A Commercial Brokerage Firm

SoWy Urban Campus – Building 1

2021-2043 NW 1st Place, Miami, FL 33127

SOWY DISTRICT AERIAL CONTEXT



Tony Arellano P.A. // Managing Partner
ta@dwntwnrealtysadvisors.com // (P) 786.235.8330

David Lerner // Executive
dl@dwntwnrealtysadvisors.com // (P) 786.706.7061

Devlin Marinoff // Managing Partner & Broker
dm@dwntwnrealtysadvisors.com // (P) 305.909.7343

DWNTWN REALTY ADVISORS
A Commercial Brokerage Firm

SoWy Urban Campus – Building 1

2021-2043 NW 1st Place, Miami, FL 33127

UNIT 1, 2 & 15 SITE PLAN



Available

Leased

UNIT	ADDRESS	SQUARE FOOTAGE
1F:	2021 NW 1st Place	1,800 SF
1I:	2037 NW 1st Place	2,166 SF
1J:	2043 NW 1st Place	719 SF
1K:	2041 NW 1st Place	983 SF



Tony Arellano P.A. // Managing Partner
ta@dwntwnrealtadvisors.com // (P) 786.235.8330

David Lerner // Executive
dl@dwntwnrealtadvisors.com // (P) 786.706.7061

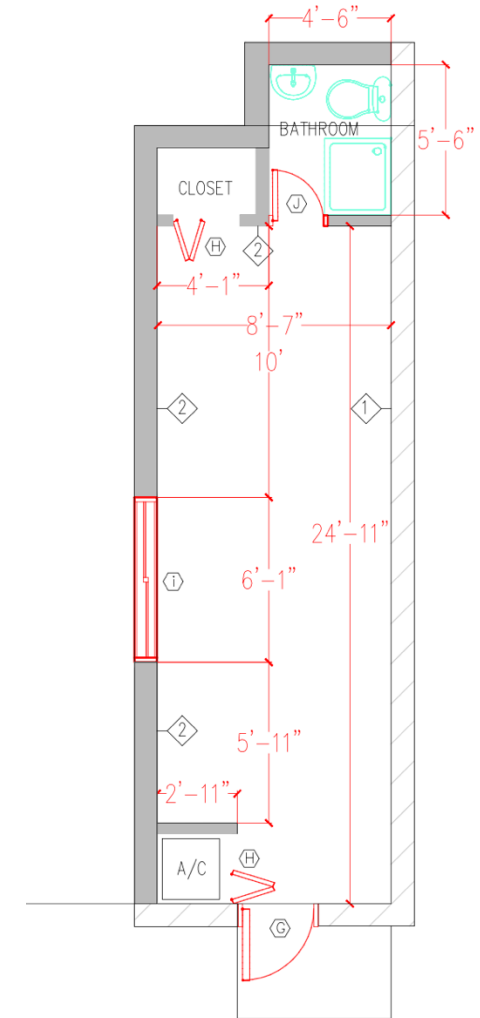
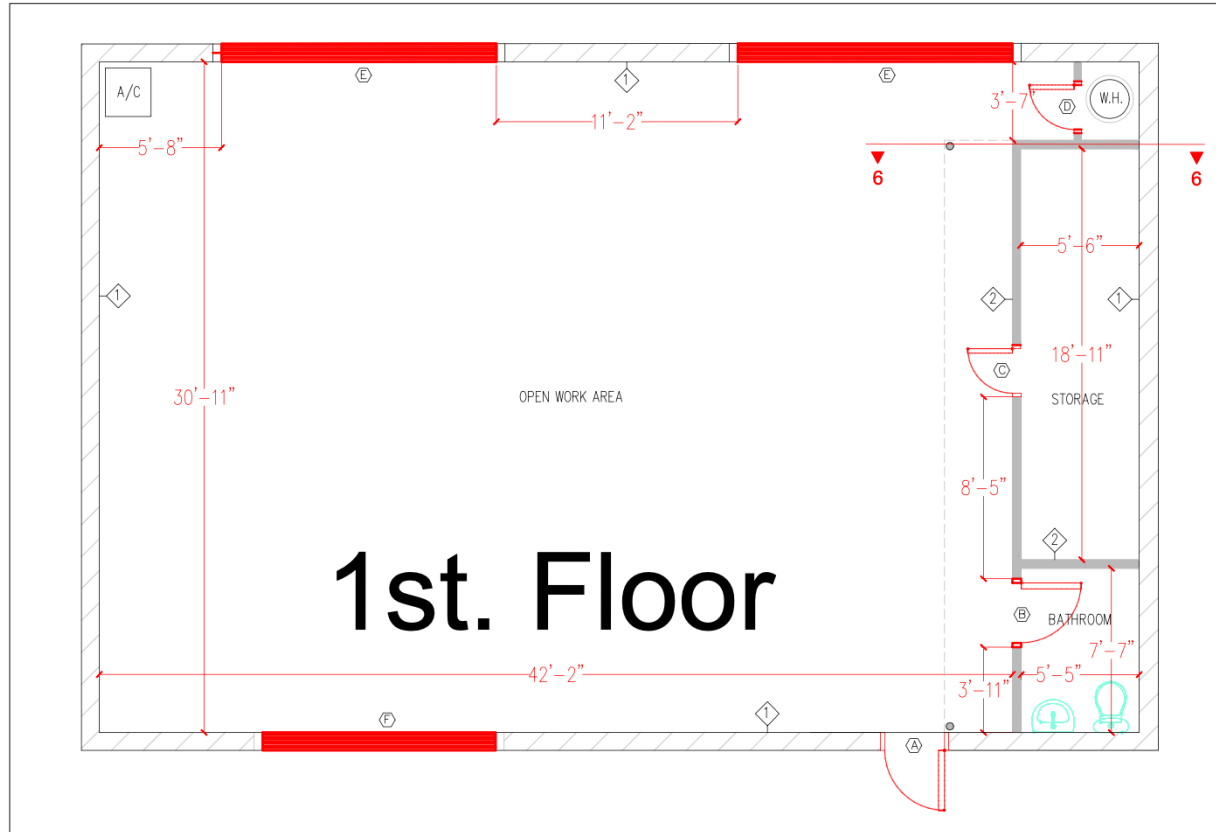
Devlin Marinoff // Managing Partner & Broker
dm@dwntwnrealtadvisors.com // (P) 305.909.7343

DWNTWN REALTY ADVISORS
A Commercial Brokerage Firm

SoWy Urban Campus – Building 1

2021-2043 NW 1st Place, Miami, FL 33127

UNIT 1F FLOORPLAN



Tony Arellano P.A. // Managing Partner
ta@dwntwnrealtysadvisors.com // (P) 786.235.8330

David Lerner // Executive
dl@dwntwnrealtysadvisors.com // (P) 786.706.7061

Devlin Marinoff // Managing Partner & Broker
dm@dwntwnrealtysadvisors.com // (P) 305.909.7343

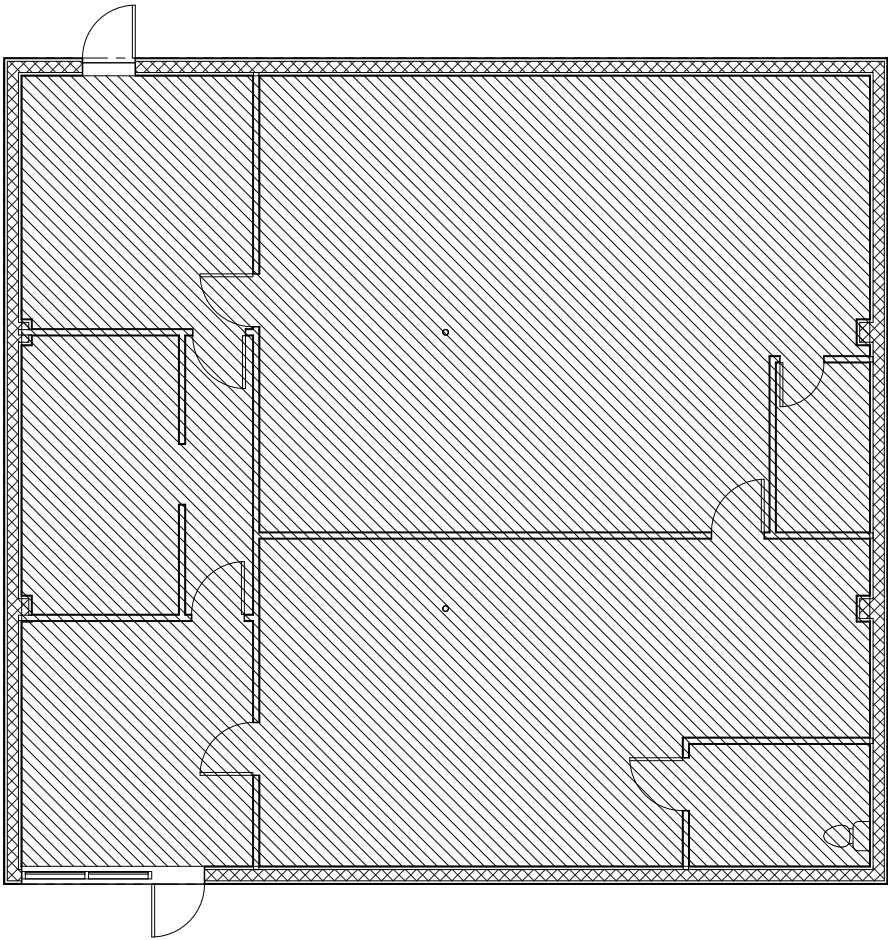
DWNTWN REALTY ADVISORS
A Commercial Brokerage Firm

SoWy Urban Campus – Building 1

2021-2043 NW 1st Place, Miami, FL 33127



UNIT 1I FLOORPLAN



① PAINT TO PAINT AREA
1/4" = 1'-0"

PAINT TO PAINT AREA 2166.22 SQ FT

Tony Arellano P.A. // Managing Partner
ta@dwntwnrealtyadvisors.com // (P) 786.235.8330

David Lerner // Executive
dl@dwntwnrealtyadvisors.com // (P) 786.706.7061

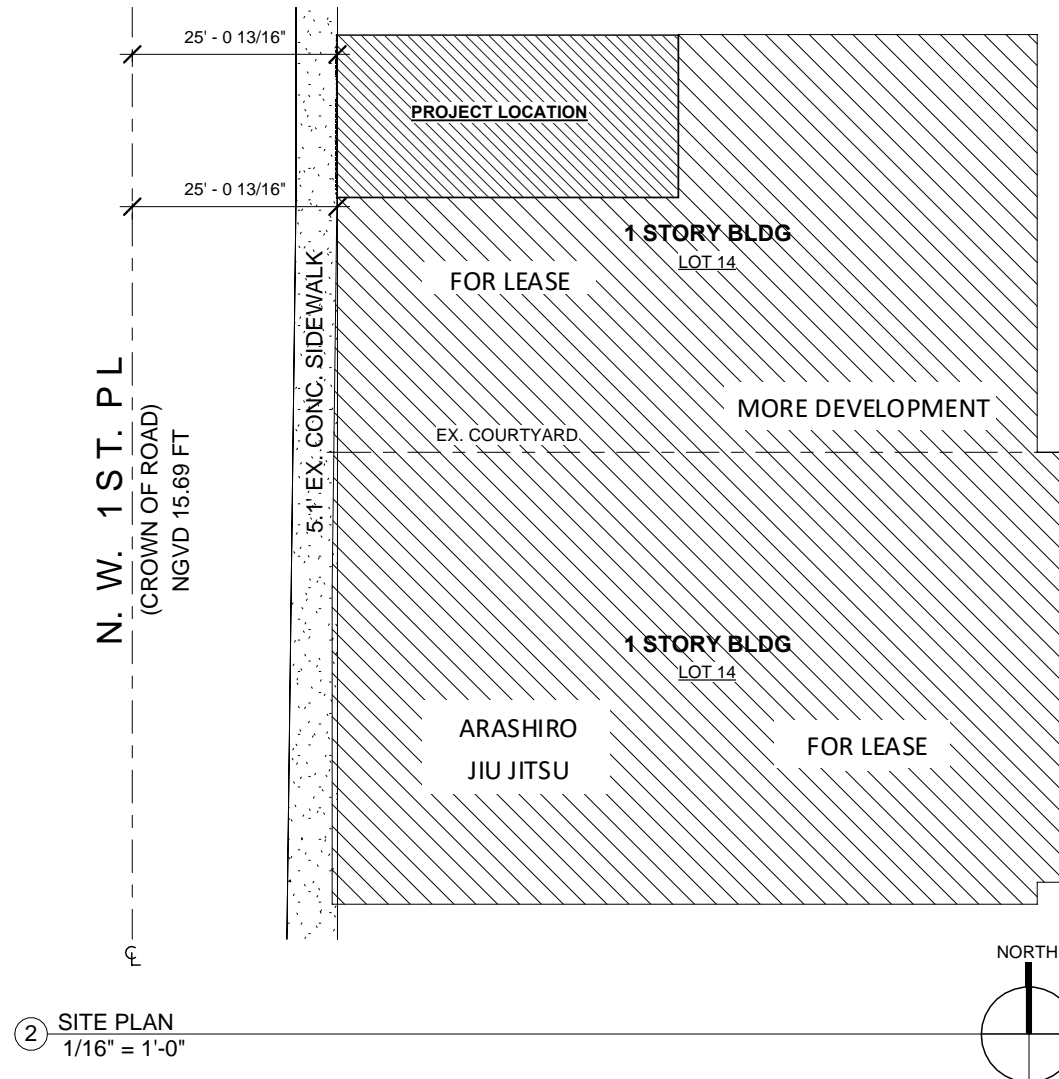
Devlin Marinoff // Managing Partner & Broker
dm@dwntwnrealtyadvisors.com // (P) 305.909.7343

DWNTWN REALTY ADVISORS
A Commercial Brokerage Firm

SoWy Urban Campus – Building 1

2021-2043 NW 1st Place, Miami, FL 33127

UNIT 1J FLOORPLAN



Tony Arellano P.A. // Managing Partner
ta@dwntwnrealtyadvisors.com // (P) 786.235.8330

David Lerner // Executive
dl@dwntwnrealtyadvisors.com // (P) 786.706.7061

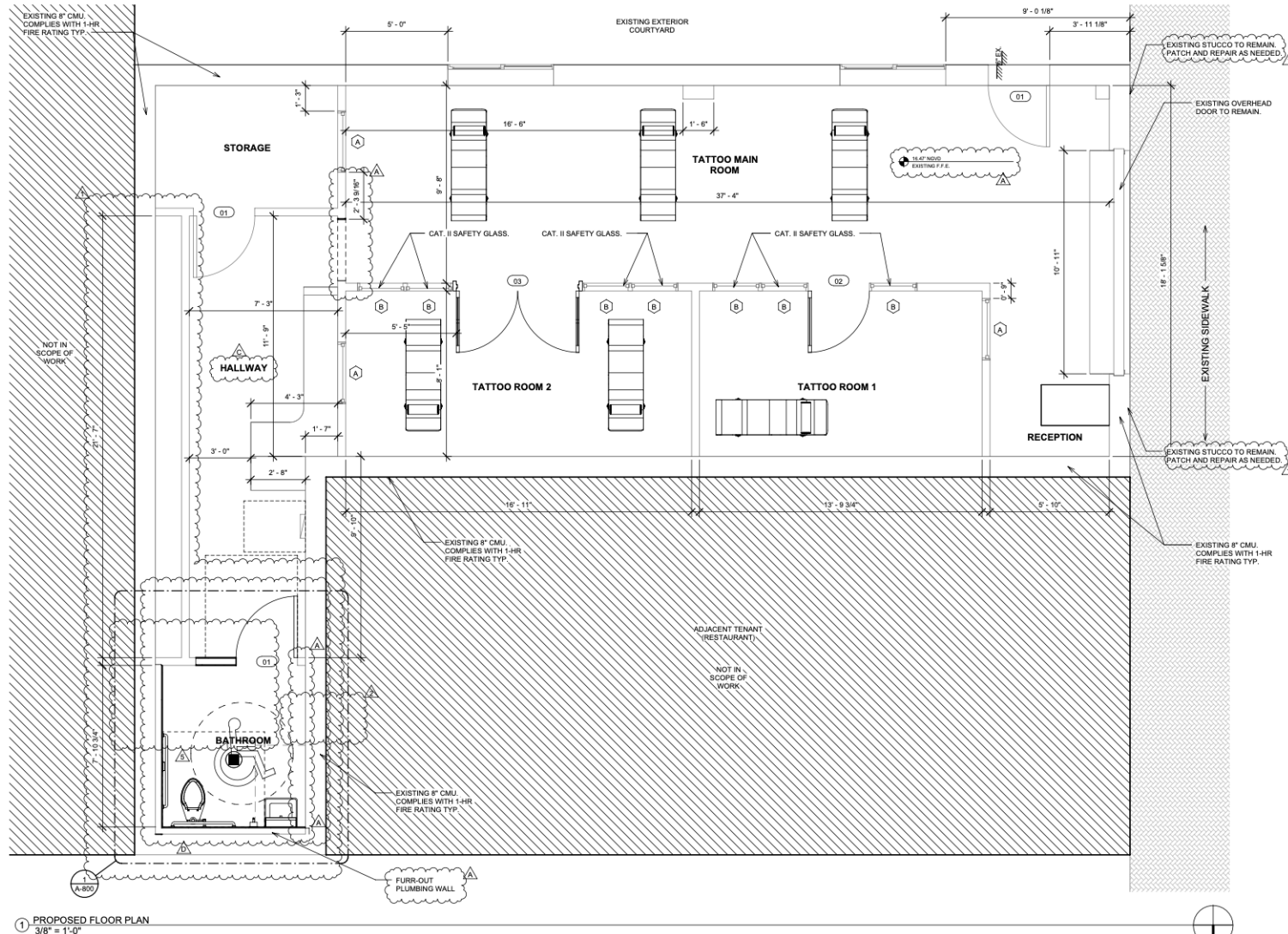
Devlin Marinoff // Managing Partner & Broker
dm@dwntwnrealtyadvisors.com // (P) 305.909.7343

DWNTWN REALTY ADVISORS
A Commercial Brokerage Firm

SoWy Urban Campus – Building 1

2021-2043 NW 1st Place, Miami, FL 33127

UNIT 1K FLOORPLAN



Tony Arellano P.A. // Managing Partner
ta@dwntwnrealtysadvisors.com // (P) 786.235.8330

David Lerner // Executive
dl@dwntwnrealtysadvisors.com // (P) 786.706.7061

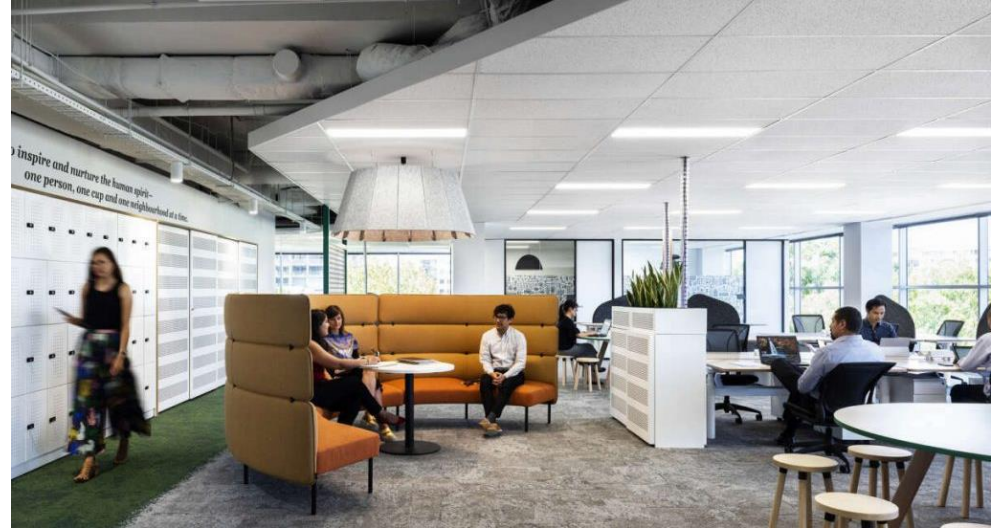
Devlin Marinoff // Managing Partner & Broker
dm@dwntwnrealtysadvisors.com // (P) 305.909.7343

DWNTWN REALTY ADVISORS
A Commercial Brokerage Firm

SoWy Urban Campus – Building 1

2021-2043 NW 1st Place, Miami, FL 33127

CREATIVE OFFICE CONCEPTS



Tony Arellano P.A. // Managing Partner
ta@dwntwnrealtadvisors.com // (P) 786.235.8330

David Lerner // Executive
dl@dwntwnrealtadvisors.com // (P) 786.706.7061

Devlin Marinoff // Managing Partner & Broker
dm@dwntwnrealtadvisors.com // (P) 305.909.7343

DWNTWN REALTY ADVISORS
A Commercial Brokerage Firm

CONTACT

Tony Arellano P.A.

Managing Partner

(C) 786.333.7199

(O) 786.235.8330

ta@dwntwnrealtyadvisors.com

David Lerner

Executive

(C) 786.393.8667

(O) 786.706.7061

dl@dwntwnrealtyadvisors.com

Devlin Marinoff

Managing Partner & Broker

(C) 917.312.2219

(O) 305.909.7343

dm@dwntwnrealtyadvisors.com

