

# Operations Center Office in East Tampa (Sabal Park)

3102 Queen Palm Drive, Tampa, Florida 33619



## Office For Lease

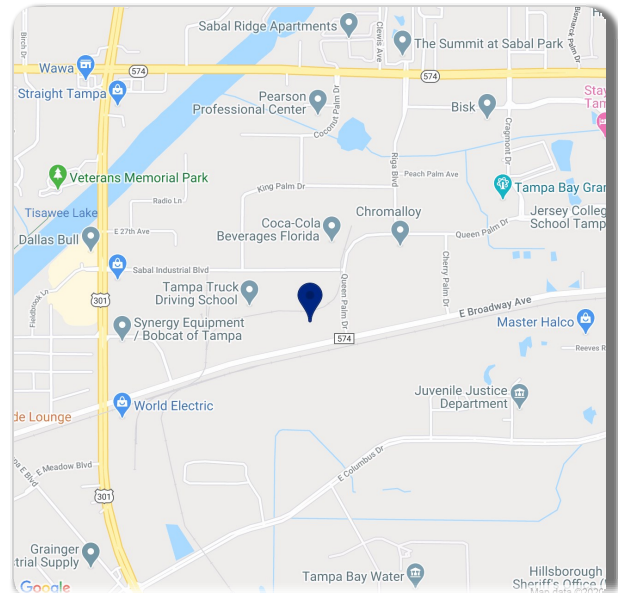
**\$12.75 /sqft FS**

Building Size: 300,000 SqFt

Available: 5,100 SqFt

Parking: 5/1000SqFt

Below market sublease in Sabal Park. New paint and carpet/flooring throughout. Rate includes all the utilities being paid by the sublandlord



For Information Contact:

**Joe Cole**  
**813-610-5256**  
**jcole@turnercole.com**

**Hillsborough's Finest Real Estate Team**

*Let us work for you!*



[www.TurnerCole.com](http://www.TurnerCole.com)

**Turner Cole Company**  
Real Estate Services

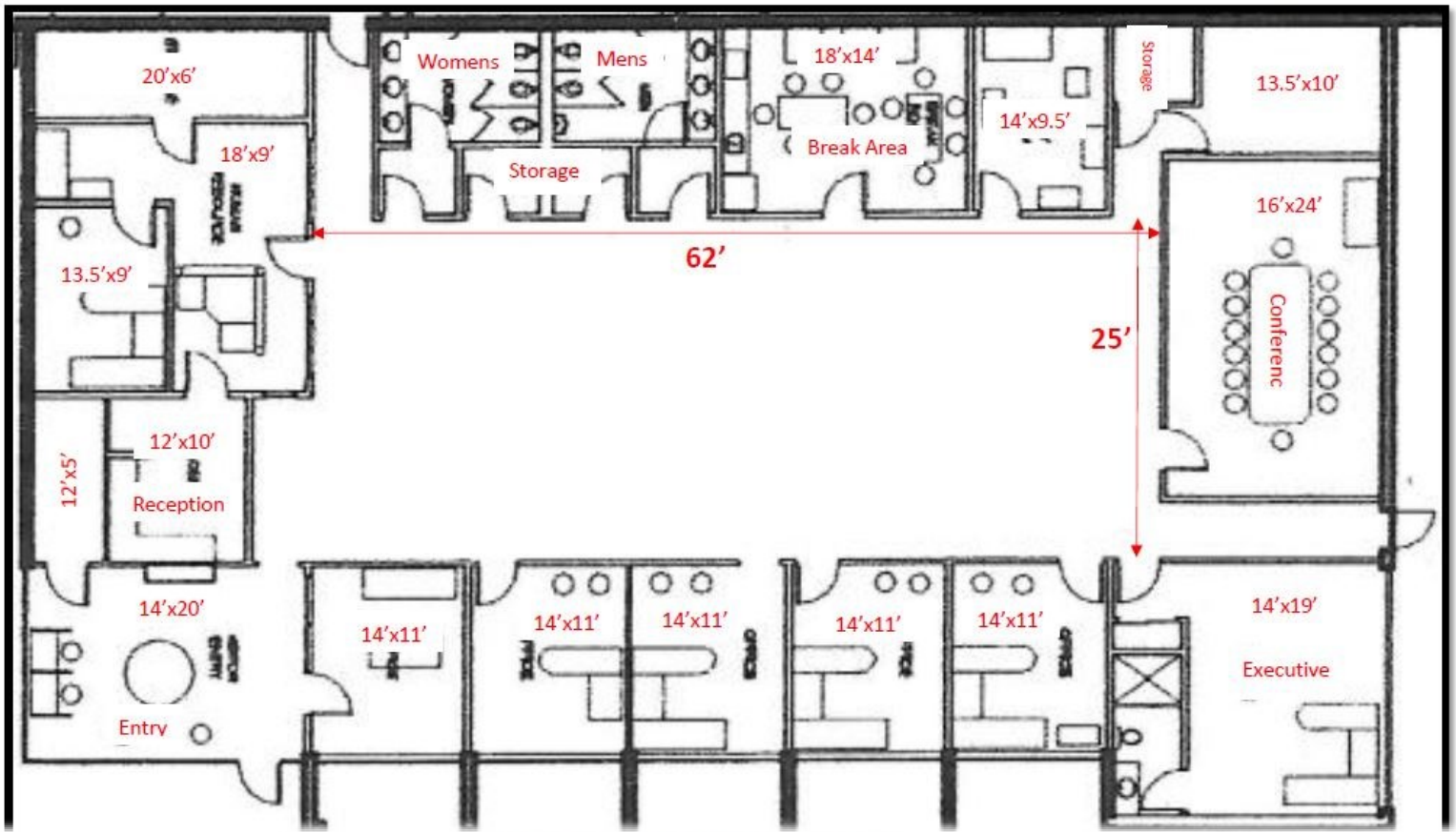
All information contained herein has been obtained by the owners and/or other sources deemed reliable, but we make no representations or warranties, expressed or implied, as to its accuracy. Information is submitted subject to the possibility of errors, omissions, change of price, rate, conditions or withdrawal without notice. References to measurements are approximate. All parties to a real estate transaction should seek legal and tax advice prior to commitment. Buyer/Tenant must verify the information and bears all risk for any inaccuracies.

# Operations Center Office in East Tampa (Sabal Park)

3102 Queen Palm Drive, Tampa, Florida 33619

## Highlights

- Common / Cubicle Area 62'x25' • 5 Working Offices 14'x11' • Break Room 18'x14' • Conference Room 16'x24' • Executive Office 14'x19' with personal full bathroom, storage closet



## DOCUMENT IMAGING & I.T. SOLUTIONS

**BRANDON****BUSINESS**  
machines



505 W. Robertson Street  
Brandon, FL 33511  
(813) 689-1950



*Your Single Source for:* **DIGITAL COPIERS • COLOR COPIERS •  
PRINTERS • WIDE FORMAT • NETWORK COMPUTERS • FAXES •  
PHONE SYSTEMS • DOCUMENT MANAGEMENT**

***OUR business is taking care of YOUR business!***

All information contained herein has been obtained by the owners and/or other sources deemed reliable, but we make no representations or warranties, expressed or implied, as to its accuracy. Information is submitted subject to the possibility of errors, omissions, change of price, rate, conditions or withdrawal without notice. References to measurements are approximate. All parties to a real estate transaction should seek legal and tax advice prior to commitment. Buyer/Tenant must verify the information and bears all risk for any inaccuracies.