



3205 BISHOP DRIVE

FLEX • FOR LEASE • 4,431 SF AVAILABLE

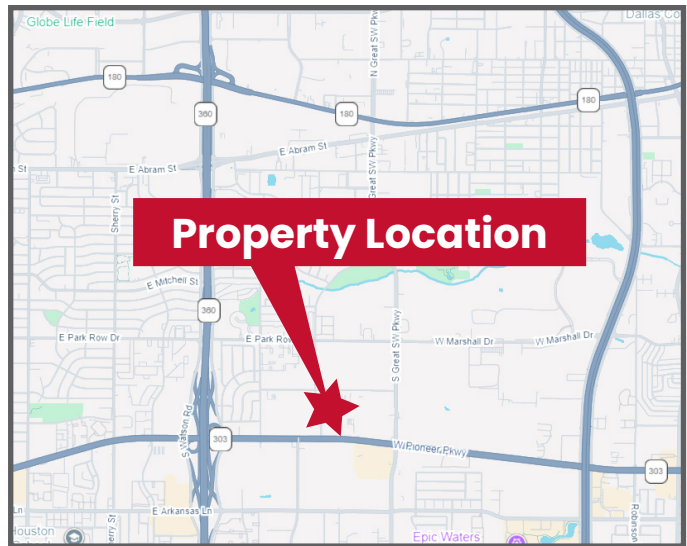
3205 Bishop Dr., Suite 101, Arlington, Texas 76010

Availability

- 4,431 Total SF
- 1,253 SF Office
- Two (2), 12'x12' overhead doors

Property Highlights

- Grade level loading
- Two (2) building complex
- Easy access to Pioneer Parkway, SH-360, PGBT, I-20 and I-30



Michael Spain
972.337.9327
mspain@bradford.com

Chris Kennedy
214.208.4220
ckennedy@bradford.com

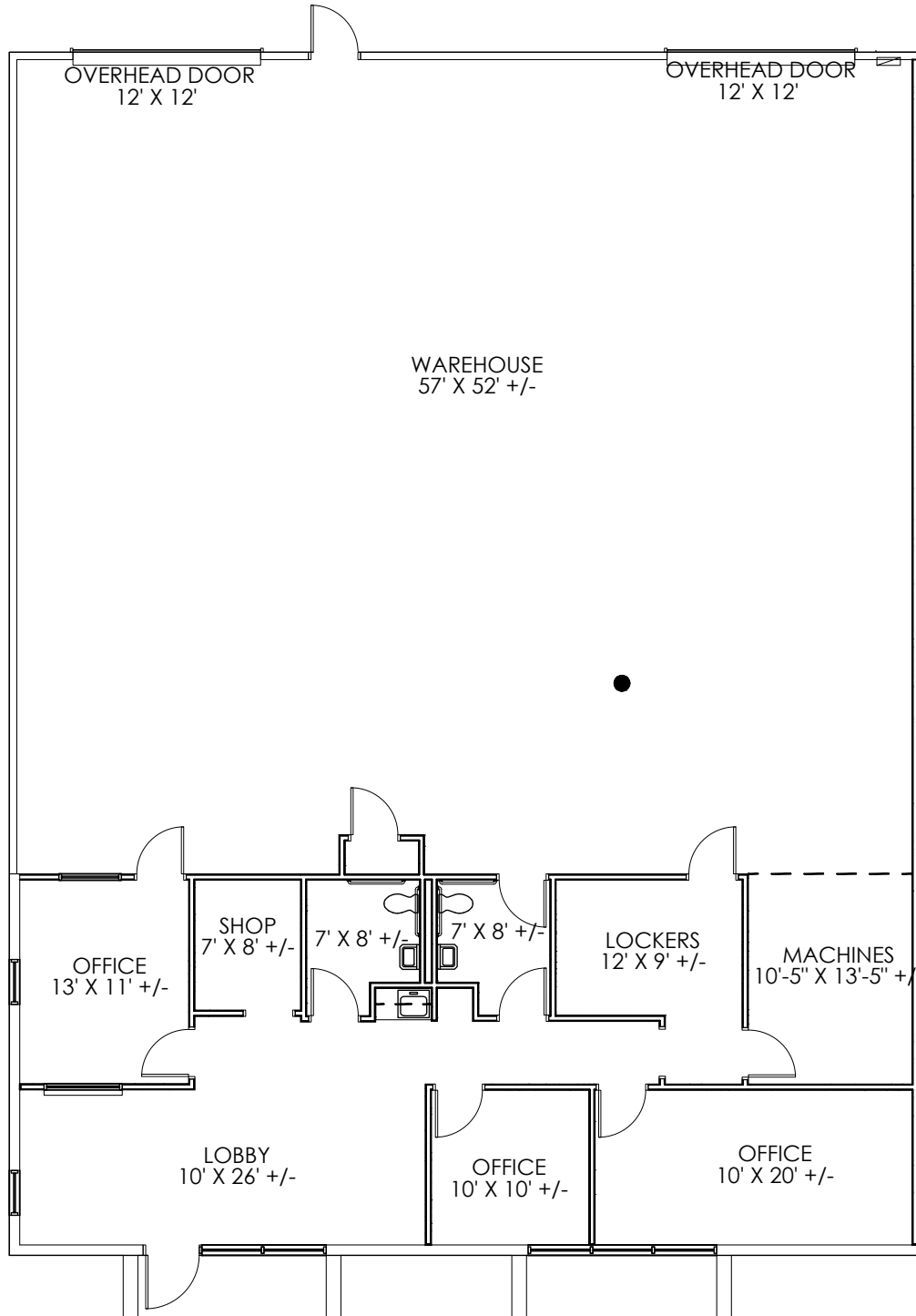
The information contained herein was obtained from sources believed reliable; however, Bradford Companies makes no guarantees, warranties, or representation as to the completeness or accuracy thereof.

3205 BISHOP DRIVE

3205 BISHOP DR., ARLINGTON, TEXAS 76010



SUITE 101 - 4,431 RSF



Michael Spain
972.337.9325
mspain@bradford.com

Chris Kennedy
214.208.4220
ckennedy@bradford.com

Bradford Commercial Real Estate Services
www.bradford.com



