

42,020 SF

Available for lease

The Medical Offices at DCMH

2100 Keystone Ave, Drexel Hill, PA 19026



Contact:

Scott Williams
Managing Director
+1 610 249 2259
ScottA.Williams@jll.com

JLL | Jones Lang LaSalle Brokerage, Inc
550 E Swedesford Road - Suite 260
Wayne, PA 19087
+1 610 249 2255



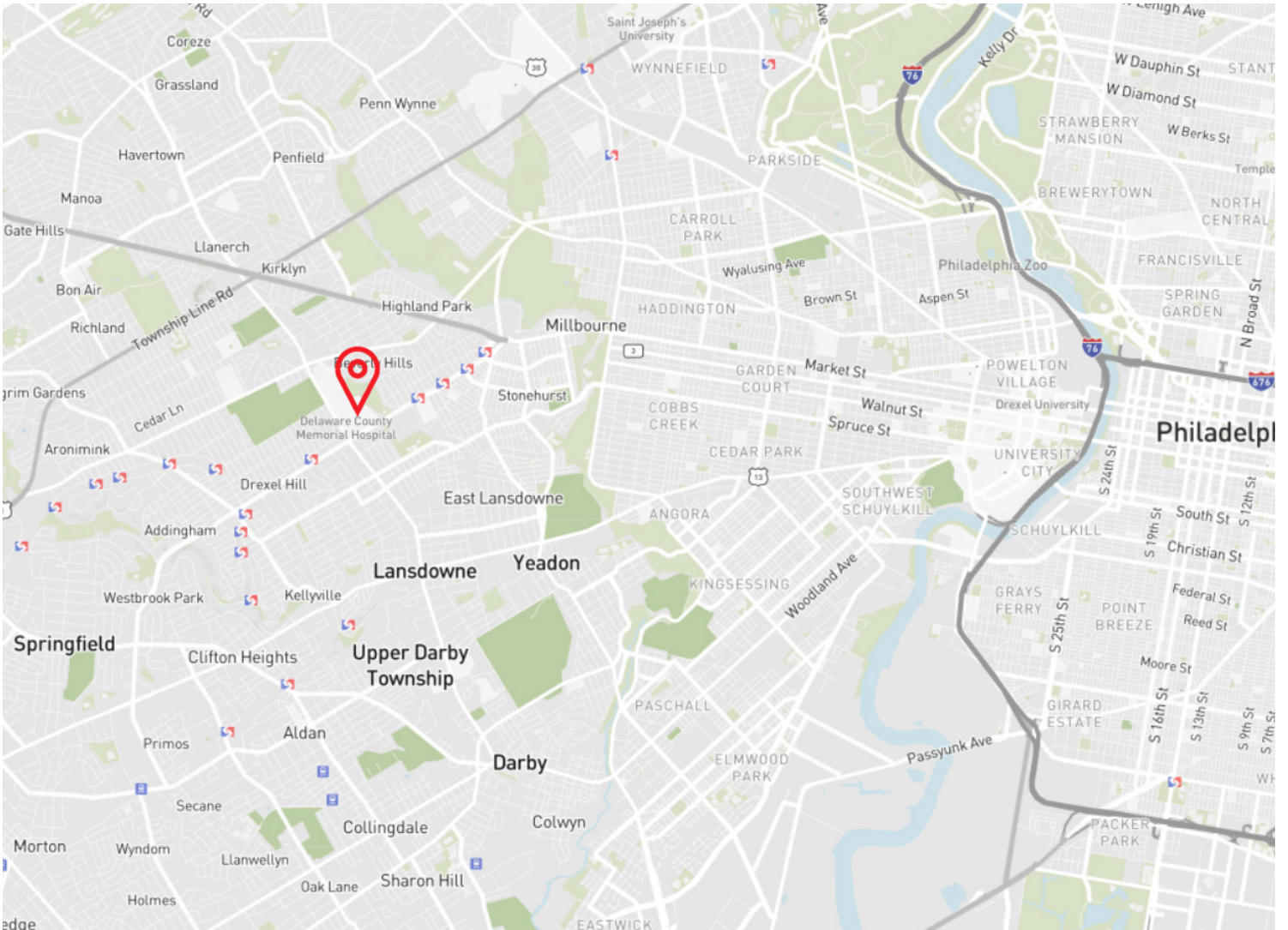
The Medical Offices at DCMH



42,020 total RSF Medical office space available

Property highlights

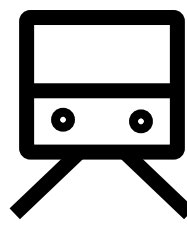
- Flexible suites available with varying sizes to accommodate all practice types
- Situated on the campus of Crozer-Keystone Health campus and connected to Delaware County Memorial Hospital on the first floor
- On-site professional management staff with 24/7 on-call maintenance
- Convenient access to University City, Center City Philadelphia, Philadelphia International Airport, and the Western Philadelphia Suburbs
- Easily accessible to public transportation including SEPTA Light Rail Routes 101 and 102
- Surrounded by a variety of walkable amenities, restaurants and entertainment



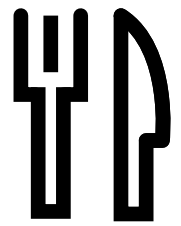
Centrally located at the intersection of Route 1, Route 3, and I-476



5 miles from University City



Location close to Septa Light Rail and 69th Street Station

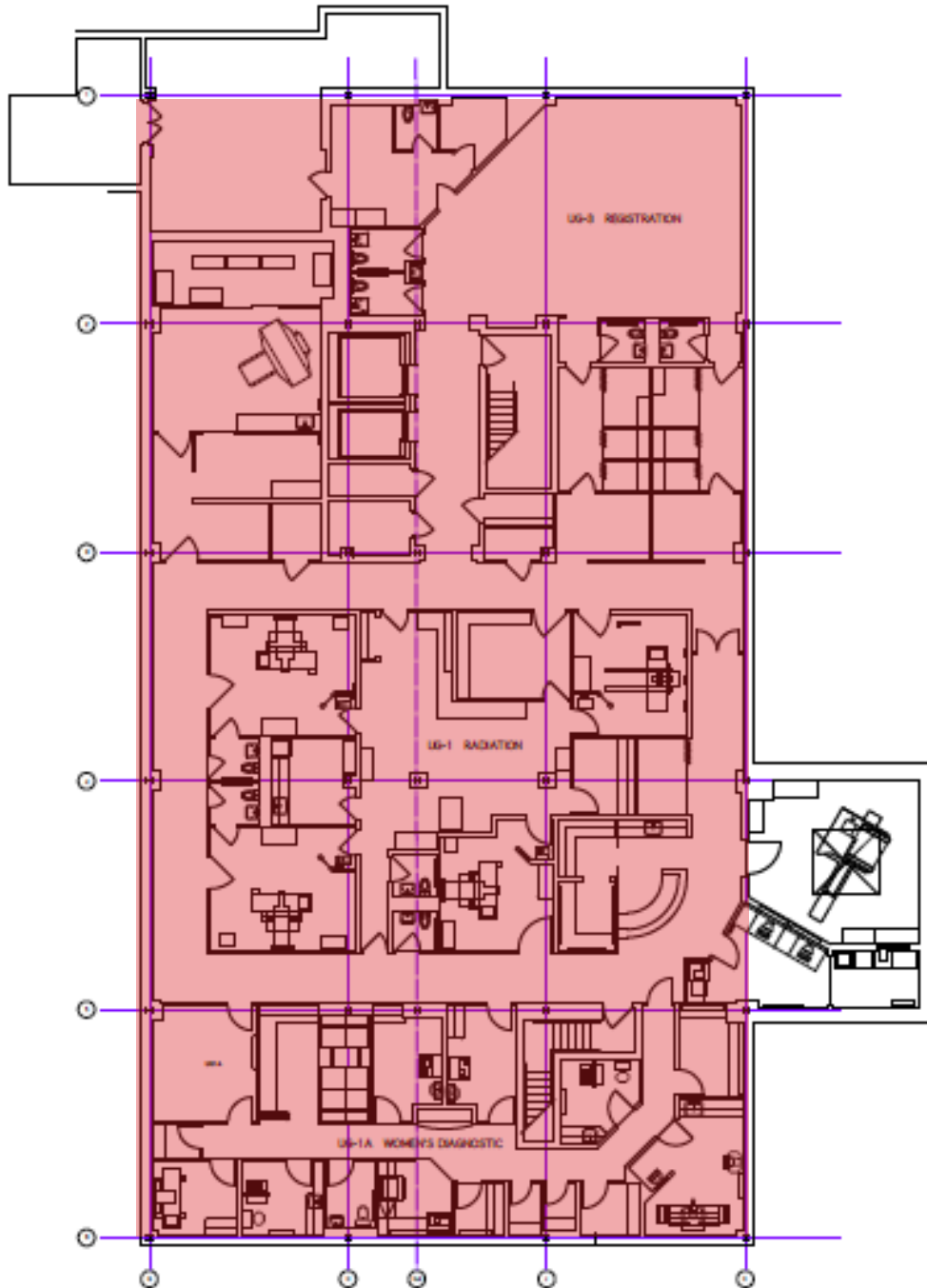


15+ restaurants and entertainment

The Medical Offices at DCMH

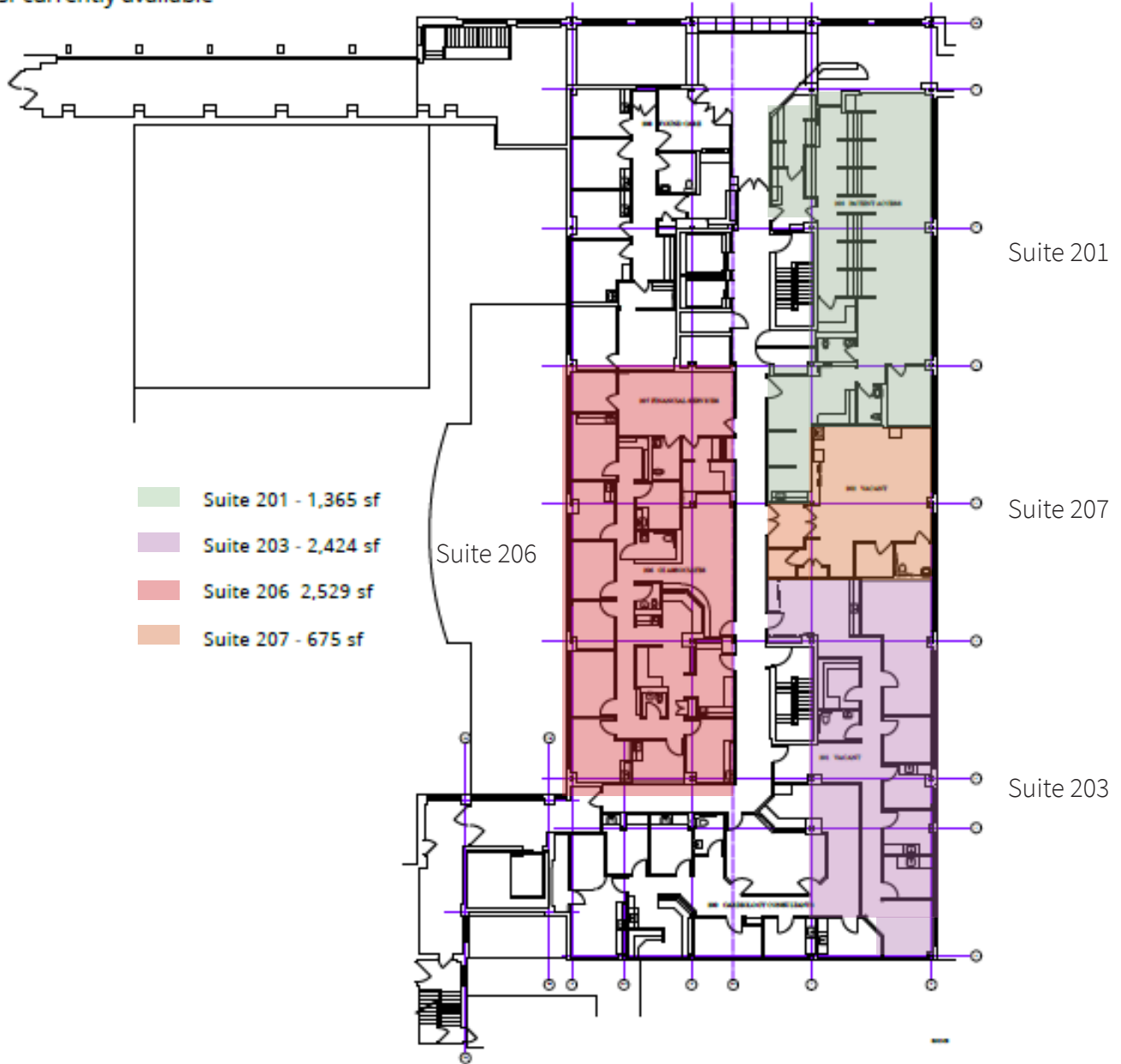
Basement Space - Full Floor Availability

11,918 sf currently available



2nd Floor - Three Suites Available

5,564 sf currently available

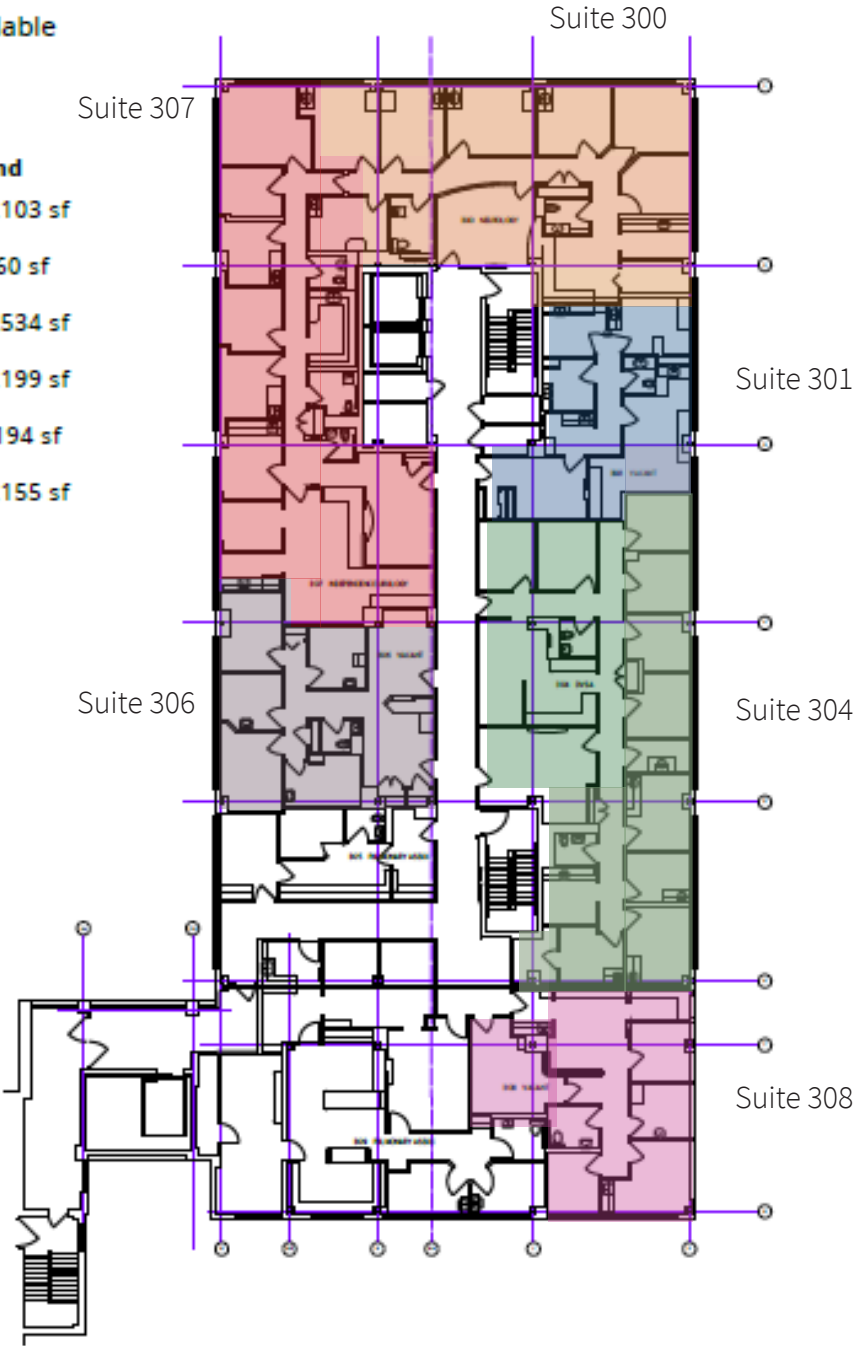


The Medical Offices at DCMH

3rd Floor - Six Suites Available

10,045 sf currently available

- Floor Plan Legend**
- Suite 300 - 2,103 sf
 - Suite 301 - 860 sf
 - Suite 304 - 2,534 sf
 - Suite 306 - 1,199 sf
 - Suite 307 - 2,194 sf
 - Suite 308 - 1,155 sf



4th Floor - Three Suites Available

4,435 sf currently available

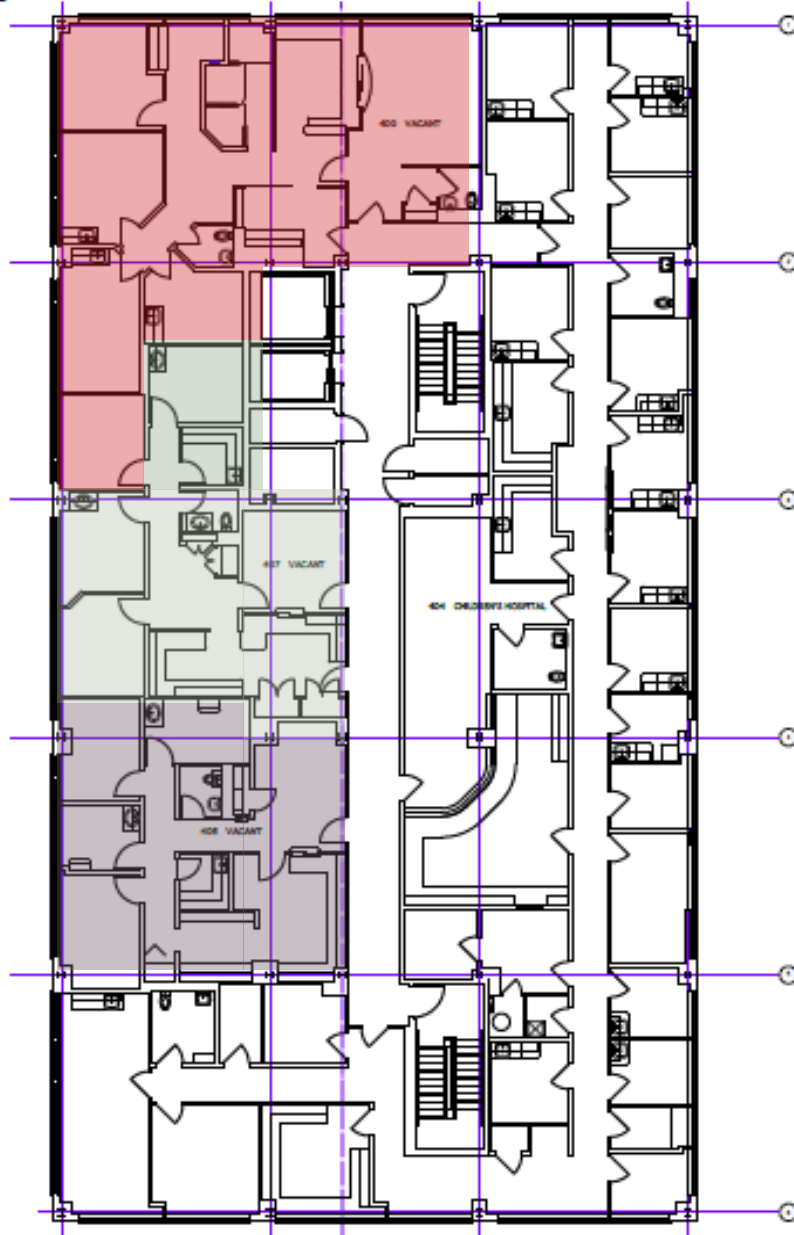
Floor Plan Legend

- Suite 400 - 1,901 sf
- Suite 406 - 1,267 sf
- Suite 407 - 1,267 sf

Suite 400

Suite 406

Suite 407

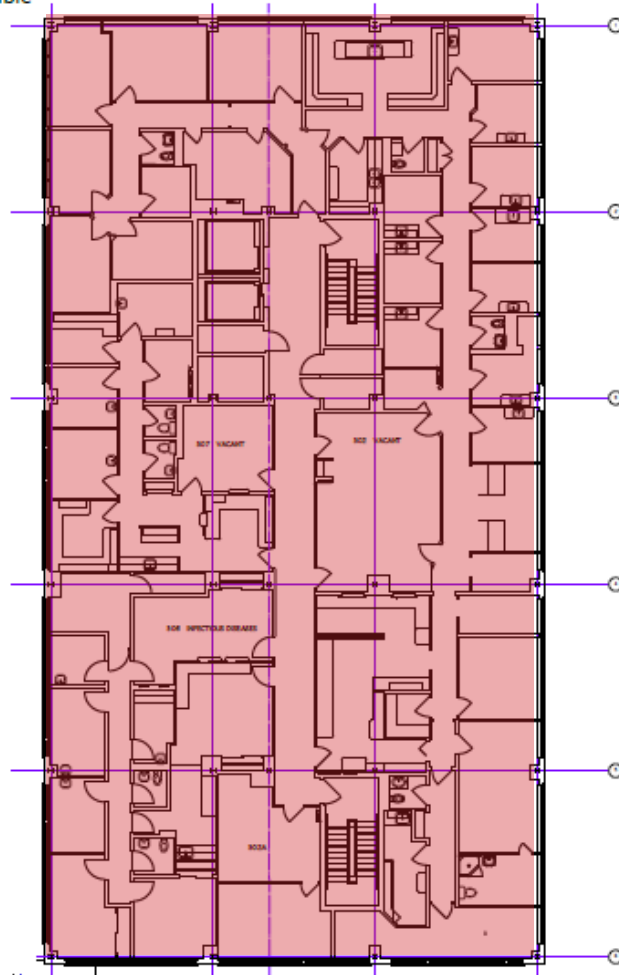


The Medical Offices at DCMH

2100 Keystone Ave, Drexel Hill, PA 19026

5th Floor - Full Floor Availability

10,058 sf currently available



Contact:

Scott Williams
Managing Director
+1 610 249 2259
ScottA.Williams@jll.com

JLL | Jones Lang LaSalle Brokerage, Inc
550 E Swedesford Road - Suite 260
Wayne, PA 19087
+1 610 249 2255



Although information has been obtained from sources deemed reliable, neither Owner nor JLL makes any guarantees, warranties or representations, express or implied, as to the completeness or accuracy as to the information contained herein. Any projections, opinions, assumptions or estimates used are for example only. There may be differences between projected and actual results, and those differences may be material. The Property may be withdrawn without notice. Neither Owner nor JLL accepts any liability for any loss or damage suffered by any party resulting from reliance on this information. If the recipient of this information has signed a confidentiality agreement regarding this matter, this information is subject to the terms of that agreement. ©2024 Jones Lang LaSalle Brokerage, Inc. All rights reserved.