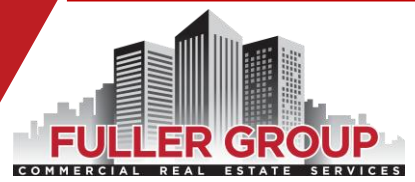


FOR SALE

RETAIL/SHOP OPPORTUNITY

1041-1109 SE Brooklyn St | Portland, OR 97202



14050 SW Pacific Hwy, Suite 212A, Tigard, OR
503.367.0516 | www.fg-cre.com



PROPERTY HIGHLIGHTS

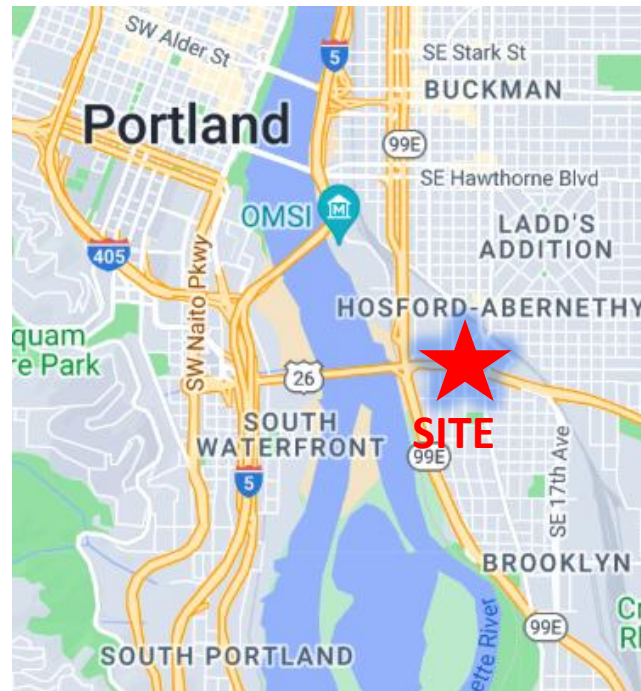
1041 Brooklyn

- 3,885 SF Industrial building/garage; 5,040 SF lot (.1157 AC)
- Zoned EG1
- Cinder block construction
- Former automotive machine shop

1109 Brooklyn

- 2,160 SF Industrial building/garage; 6,832 SF lot (.1568 AC)
- Zoned EG1
- Metal skinned building facing Brooklyn (Powell)
- Billboard lease in place
- 1,344 SF two story retail shop off Milwaukie Ave.

Sale price: \$1.95M



FOR MORE INFORMATION:

Steve Hunker, CCIM, Vice President/Broker
steve@fg-cre.com

FOR SALE

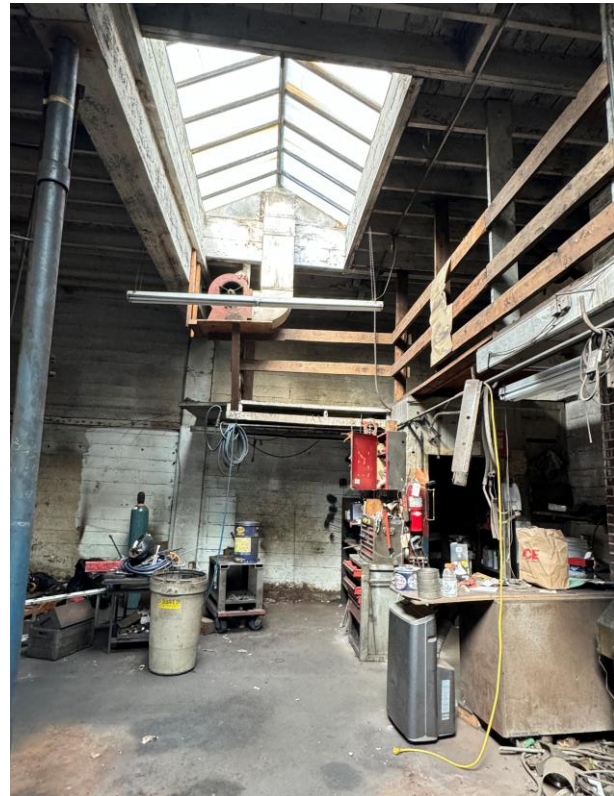
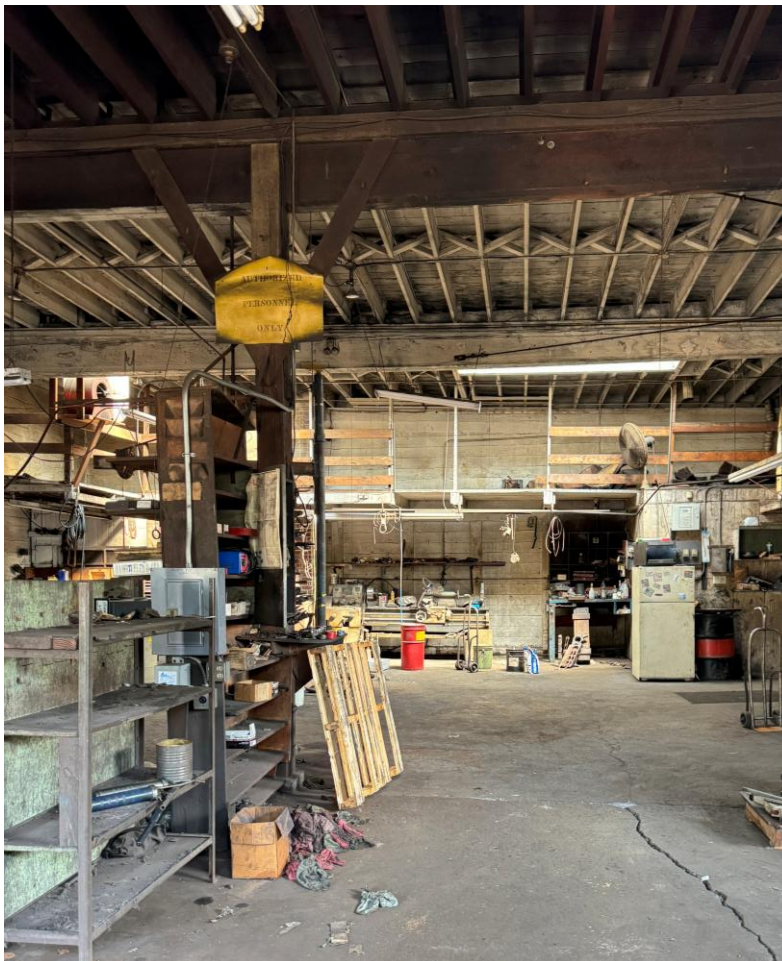
RETAIL/SHOP OPPORTUNITY

1041-1109 SE Brooklyn St | Portland, OR 97202



14050 SW Pacific Hwy, Suite 212A, Tigard, OR
503.367.0516 | www.fg-cre.com

1041 Brooklyn



FOR SALE

RETAIL/SHOP OPPORTUNITY

1041-1109 SE Brooklyn St | Portland, OR 97202



14050 SW Pacific Hwy, Suite 212A, Tigard, OR
503.367.0516 | www.fg-cre.com



FOR SALE

RETAIL/SHOP OPPORTUNITY

1041-1109 SE Brooklyn St | Portland, OR 97202



14050 SW Pacific Hwy, Suite 212A, Tigard, OR
503.367.0516 | www.fg-cre.com

History

The Brooklyn neighborhood was founded in the late 1860's, an area originally home to the Clackamas Indian tribe. It was a former industrial zone in the late 1800's with factories and warehouses along the Willamette River.

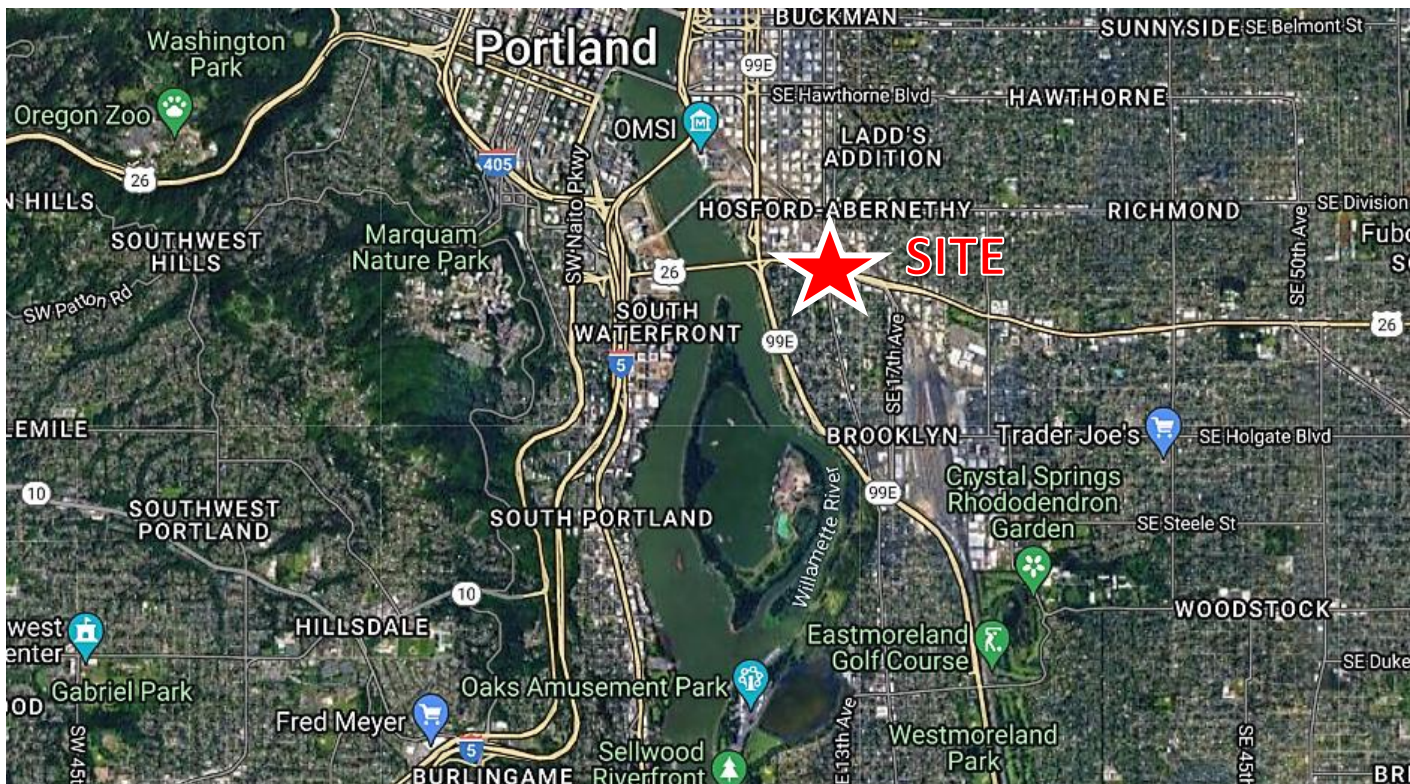


Architecture and Points of Interest

- The Aladdin Theater, built in 1928 as a vaudeville theater, is now a premier music event venue.
- Tilikum Crossing Bridge of the People is a cable-stayed bridge across the Willamette River. The bridge serves pedestrians, bikes, light rail and bus traffic only.
- Ross Island Bridge is a cantilever truss bridge which also spans the Willamette River. US-26 provides a route between the East and West sides of Portland.

The neighborhood has a variety of home styles including Victorian and modern townhomes. The Johan Poulsen House is a three-story American Queen Anne style mansion in Brooklyn. Many of the original buildings have been repurposed into cafes, art studios and living spaces. The neighborhood has a mix of restaurants, coffee shops, wineries, bars, and music venues.

See more here! [Portland Neighborhood Guide](#)



This statement with the information it contains is given with the understanding that all the negotiations relating to the purchase, rental or leasing of the property described above shall be conducted through this office. The above information, while not guaranteed, has been secured from sources we believe to be reliable.