

BUILDING 1 PHOTO

I-20 CIRCLE #10

2372 S. STONE MOUNTAIN LITHONIA RD, LITHONIA, GA 30058

Newburger-Andes
REAL ESTATE INVESTMENTS



MARKETING PACKAGE

I-20 CIRCLE #10

Contact John Woodhams, CCIM
201 Allen Rd NE, Suite 300, Atlanta, GA 30328

www.newburger-andes.com

Phone: 404-256-3061

Cell: 770-757-1290

jwoodhams@Newburger-Andes.com

www.newburger-andes.com

BUILDING 2 PHOTO

I-20 CIRCLE #10

2374 S. STONE MOUNTAIN LITHONIA RD, LITHONIA, GA 30058

Newburger-Andes
REAL ESTATE INVESTMENTS



AERIAL CLOSE UP BUILDING 1 & 2

I-20 CIRCLE #10
2372 & 2374 S. STONE MOUNTAIN LITHONIA ROAD, LITHONIA,
GA 30058

Newburger-Andes
REAL ESTATE INVESTMENTS



AERIAL FAR AWAY BUILDING 1 & 2

I-20 CIRCLE #10
2372 & 2374 S. STONE MOUNTAIN LITHONIA ROAD, LITHONIA,
GA 30058

Newburger-Andes
REAL ESTATE INVESTMENTS



SPACES AVAILABLE BUILDING 2

I-20 CIRCLE #10

2374 S. STONE MOUNTAIN LITHONIA RD, LITHONIA, GA 30058

Newburger-Andes
REAL ESTATE INVESTMENTS

ADDRESS	COUNTY/ AREA	STE	TOTAL SQ.FT.	OFFICE SQ FT	RATE PER SQ. FT.	RATE/ MO.	OPEX/ SQ. FT.	OPEX/MO.	TOTAL RENT/MO.	TAXES	INSURANCE	DOOR DOORS	DRIVE IN DOORS
2374 S. Stone Mt Lithonia Rd, Lithonia, GA 30058 -Warehouse-	DeKalb/ Lithonia	E33-B15	2,050	408	\$9.21	\$1,574	\$2.79	\$477	\$2,051	Included in OPEX	Included in OPEX	1	1
2374 S. Stone Mt Lithonia Rd, Lithonia, GA 30058 -Warehouse-	DeKalb/ Lithonia	E33-B10	2,050	143	\$9.21	\$1,574	\$2.79	\$477	\$2,051	Included in OPEX	Included in OPEX	1	1
2374 S. Stone Mt Lithonia Rd, Lithonia, GA 30058 -Warehouse-	DeKalb/ Lithonia	E33-B7	2,050	140	\$9.21	\$1,574	\$2.79	\$477	\$2,051	Included in OPEX	Included in OPEX	1	1

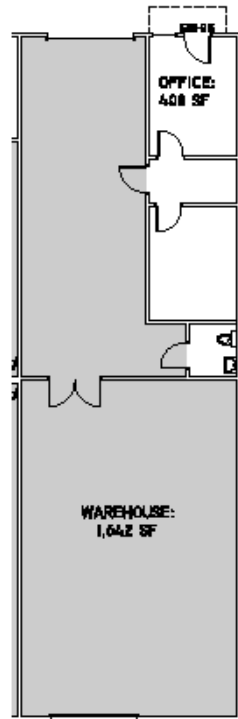
FLOOR PLAN (NOT TO SCALE)

I-20 CIRCLE #10

2374 S. STONE MOUNTAIN LITHONIA RD, LITHONIA, GA 30058

Newburger-Andes
REAL ESTATE INVESTMENTS

Suite B-15



PLANNING U
INTERIORS Z

I-20 CIRCLE #10 - BUILDING 2

2374 S. STONE MOUNTAIN LITHONIA ROAD, LITHONIA • SUITE E33-B15 • 2,050 RSF

07.09.2022

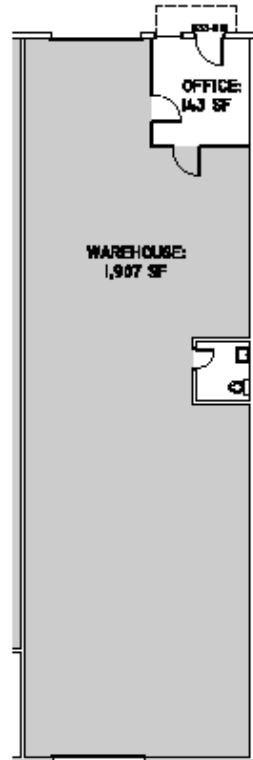
FLOOR PLAN (NOT TO SCALE)

I-20 CIRCLE #10

2374 S. STONE MOUNTAIN LITHONIA RD, LITHONIA, GA 30058

Newburger-Andes
REAL ESTATE INVESTMENTS

Suite B-10



PLANNING
INTERIORS

I-20 CIRCLE #10 - BUILDING 2

2374 S. STONE MOUNTAIN LITHONIA ROAD, LITHONIA • SUITE E33-B10 • 2,050 RSF

07.29.2022

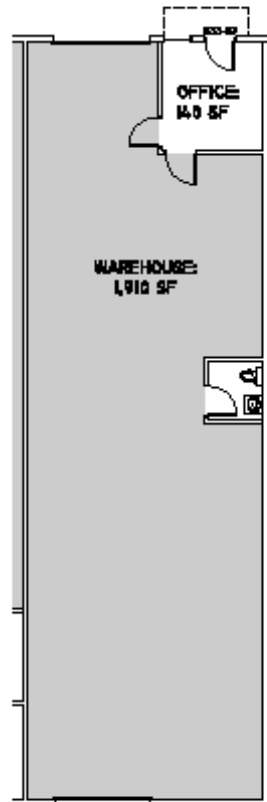
FLOOR PLAN (NOT TO SCALE)

I-20 CIRCLE #10

2374 S. STONE MOUNTAIN LITHONIA RD, LITHONIA, GA 30058

Newburger-Andes
REAL ESTATE INVESTMENTS

Suite B-7



PLANNING INC
INTERIORS INC

I-20 CIRCLE #10 - BUILDING 2
2374 S. STONE MOUNTAIN LITHONIA ROAD, LITHONIA • SUITE E33-B7 • 2,050 RSF

07.09.2022

CONTACT INFORMATION

I-20 #10
2372 & 2374 S STONE MOUNTAIN LITHONIA RD
LITHONIA, GA 30058

Newburger-Andes
REAL ESTATE INVESTMENTS

John Woodhams, CCIM
Investment Sales & Leasing

Newburger-Andes
REAL ESTATE INVESTMENTS

Mobile (770) 757-1290
Main (404) 256-3061
Fax (404) 256-0741
johnwoodhams@newburger-andes.com
www.newburger-andes.com

Newburger-Andes
Real Estate Investments
201 Allen Road NE
Suite 300
Atlanta, GA 30328