



***Industrial Opportunity  
For Lease***

**Class A Warehouse Immediately  
Available in Weston, Florida**

***Leasing Information***

**Timothy Talbot  
President**

**(954) 385-0000**

**[ttalbot@comreal.com](mailto:ttalbot@comreal.com)**





## *Property Overview*

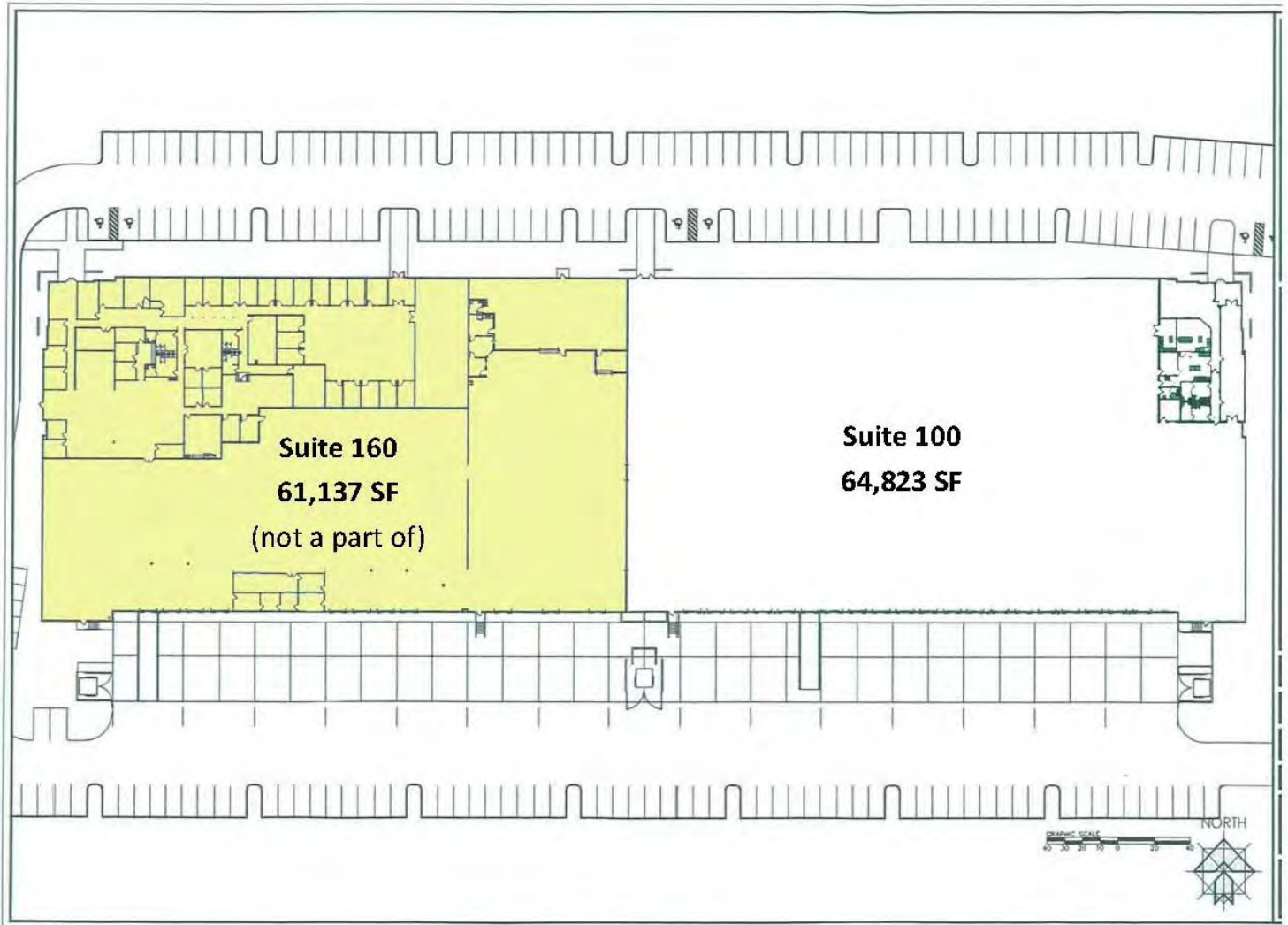
Located in South Florida's prestigious business park, this 64,823 SF Class A warehouse space is immediately available for lease. The Meridian Business Campus is conveniently located in the heart of Weston, Florida; minutes from I-75, I-595, and the Sawgrass Expressway.

This park is surrounded by many popular and attractive shopping destinations as well as dining establishments. Meridian Business Campus prides itself for its meticulous and lush landscape, as well as the lake-front views all around the campus.



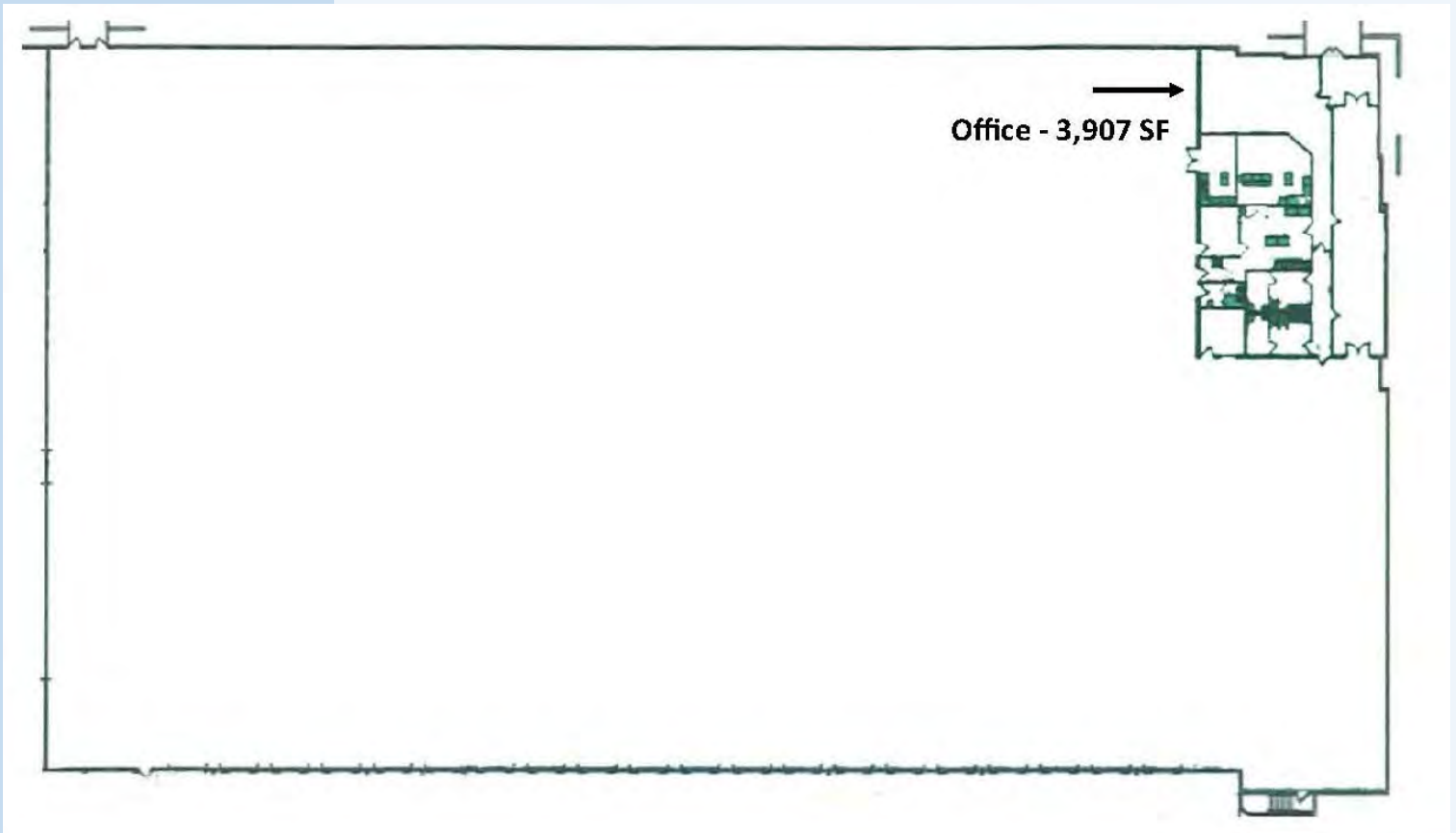
## *Property Highlights*

- 64,823 SF Industrial Space
- 24 Ft. Clear Ceilings
- T-5 Lighting
- 19 Dock High Doors
- 1 Ramp
- Ample Parking
- Offices - Individually Metered & Controlled Air Conditioning
- Conveniently Located Near I-75, I-595, & Sawgrass Expressway
- Minutes to Port Everglades & MIA



*Industrial Opportunity 64,823 SF*





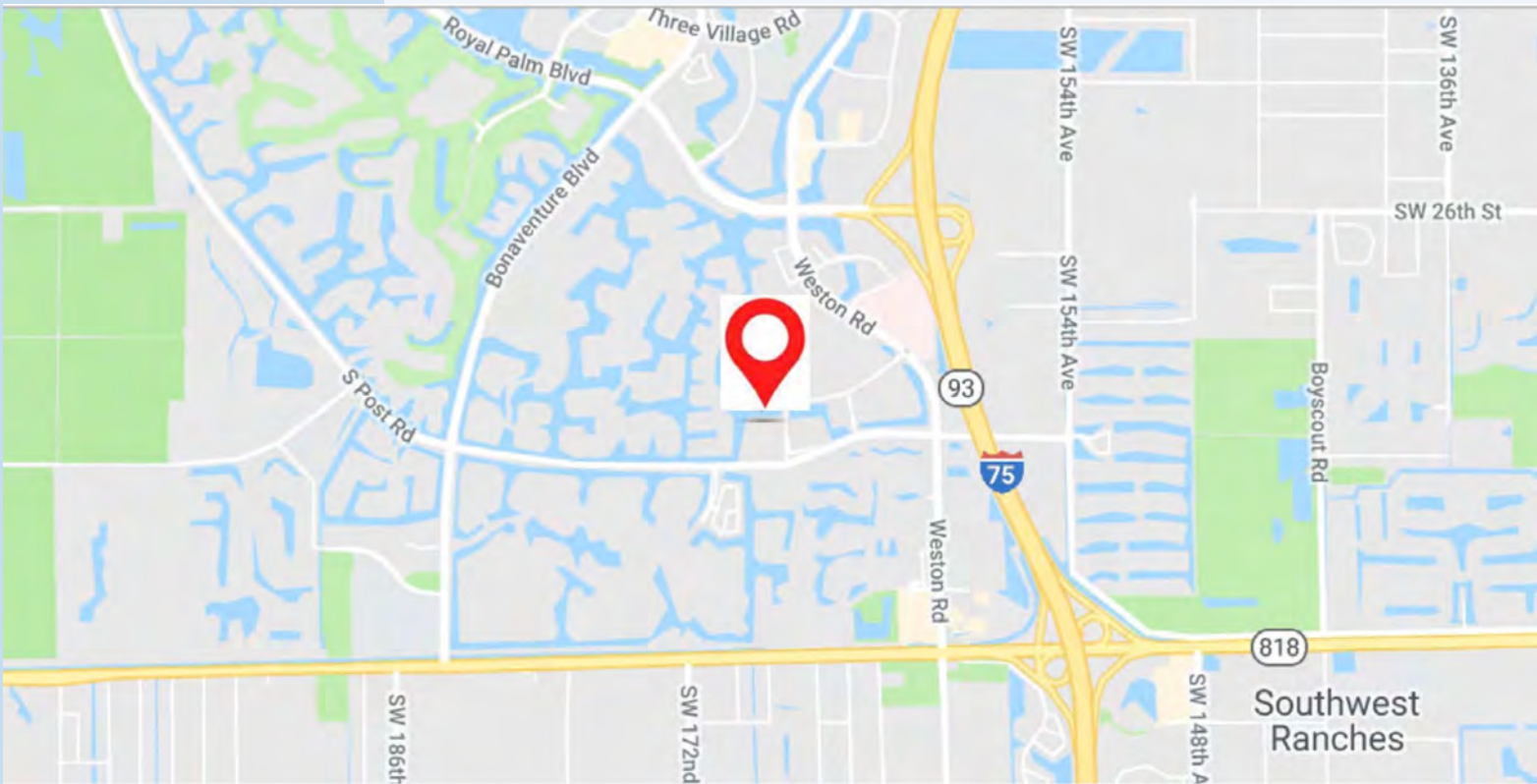
*Industrial Opportunity*  
*Office/Showroom - 3,907 SF*



# MERIDIAN

BUSINESS CAMPUS AT WESTON

3355 Enterprise Avenue  
Weston, FL 33331



Leasing Information

Timothy Talbot | Andrew Ackerman  
(954) 385-0000

