

201 11TH STREET

FOR LEASE | MOVE-IN READY ADVANCED MANUFACTURING BUILDING

TCP
TOUCHSTONE
COMMERCIAL PARTNERS



WWW.TCPRE.COM

ZACH HAUPERT zhaupert@tcpre.com
D 415.539.1121 | C 415.812.1219

MICHAEL SANBERG msanberg@tcpre.com
D 415.539.1103 | C 415.697.6088

TREVOR GUDIM trevor@tcpre.com
D 415.539.1122 | C 858.922.2632

201 11TH STREET

PROPERTY SUMMARY

ADDRESS

201 11th Street, San Francisco, CA 94103

AVAILABLE SPACE

Ground Floor: +/- 14,496 Square Feet

Lower Level: +/- 14,496 Square Feet

TOTAL: +/- 28,992 Square Feet

RENTAL RATE

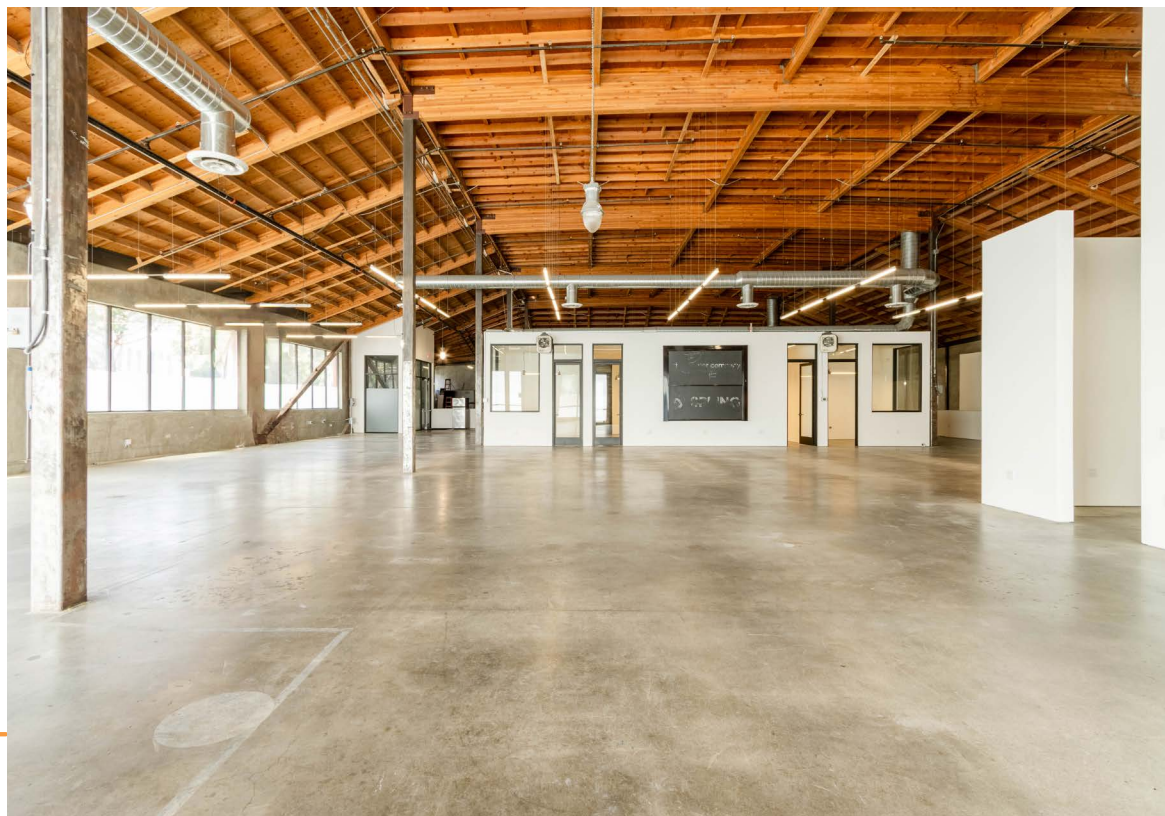
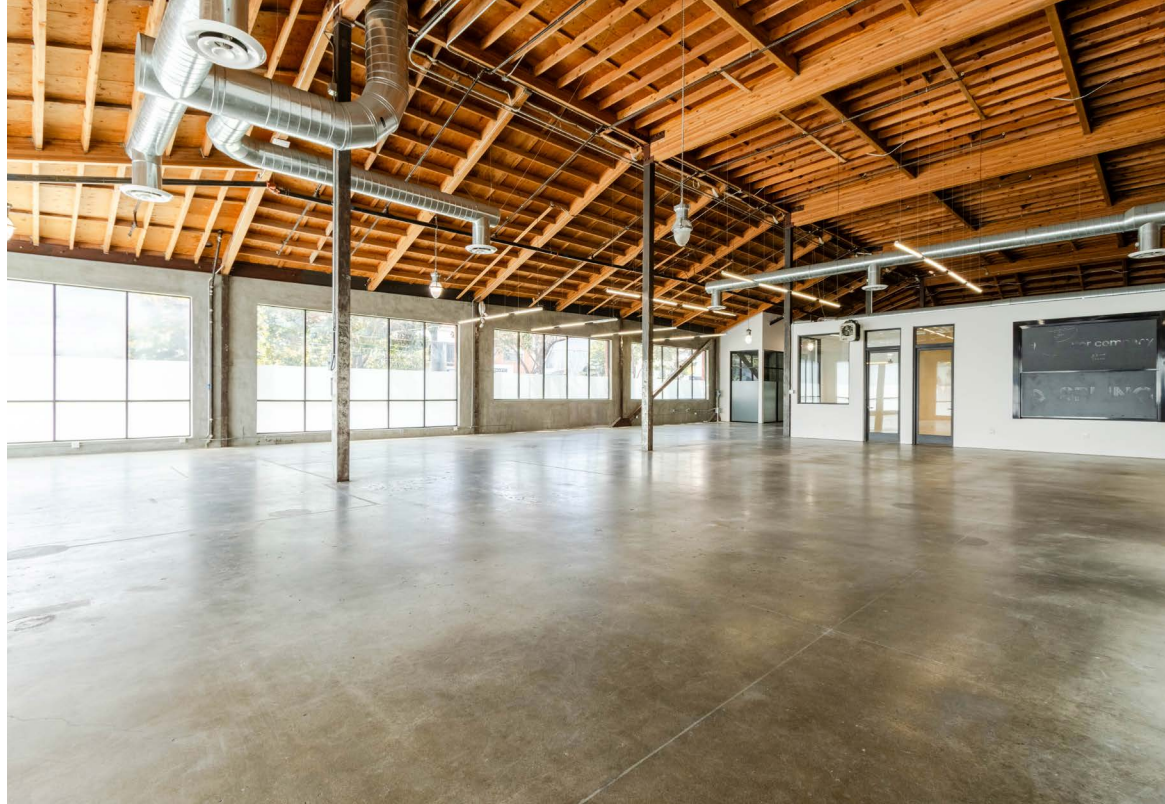
\$55,000 / Month, Industrial Gross

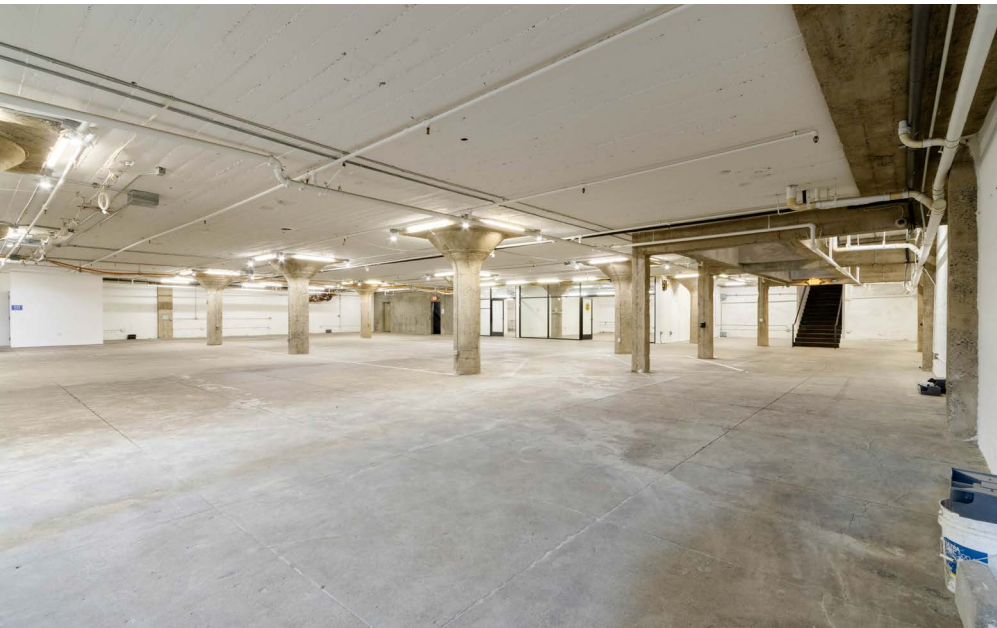
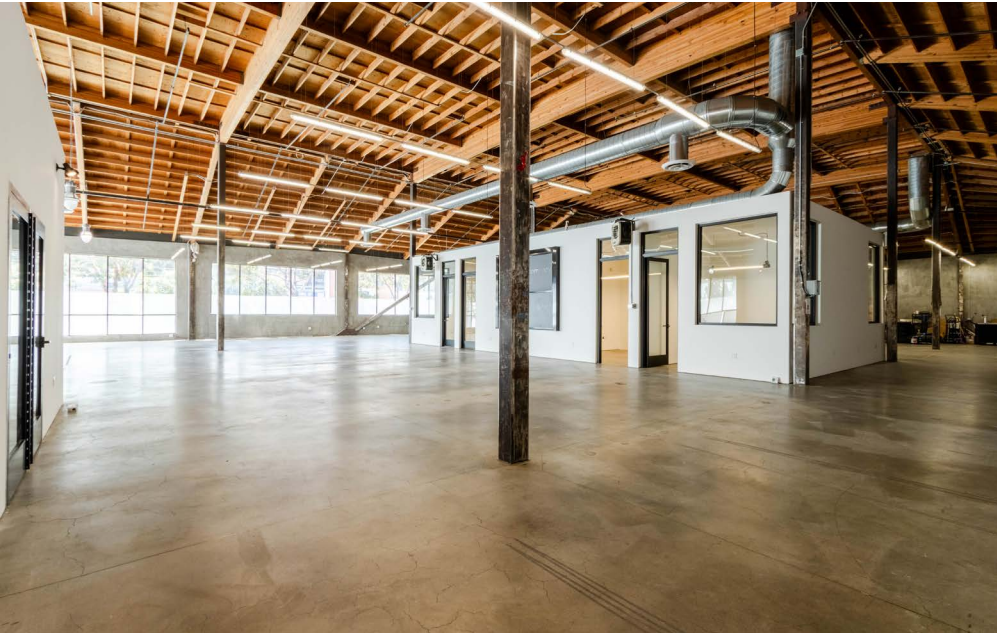
AVAILABLE

Immediately

BUILDING ATTRIBUTES

- + Potential Uses Include - EV Fleet, Robotics, Laboratory, Light Manufacturing, Industrial Design, Etc.
- + 28 Foot Clear Span on Ground Floor
- + Roll-Up / Drive-In Access to Both Levels
- + Fully Sprinklered, Full HVAC
- + Nine (9) Meeting Rooms
- + Heavy Power, 3-Phase, 1000 Amps
- + Lab w/ Venting in Lower Level





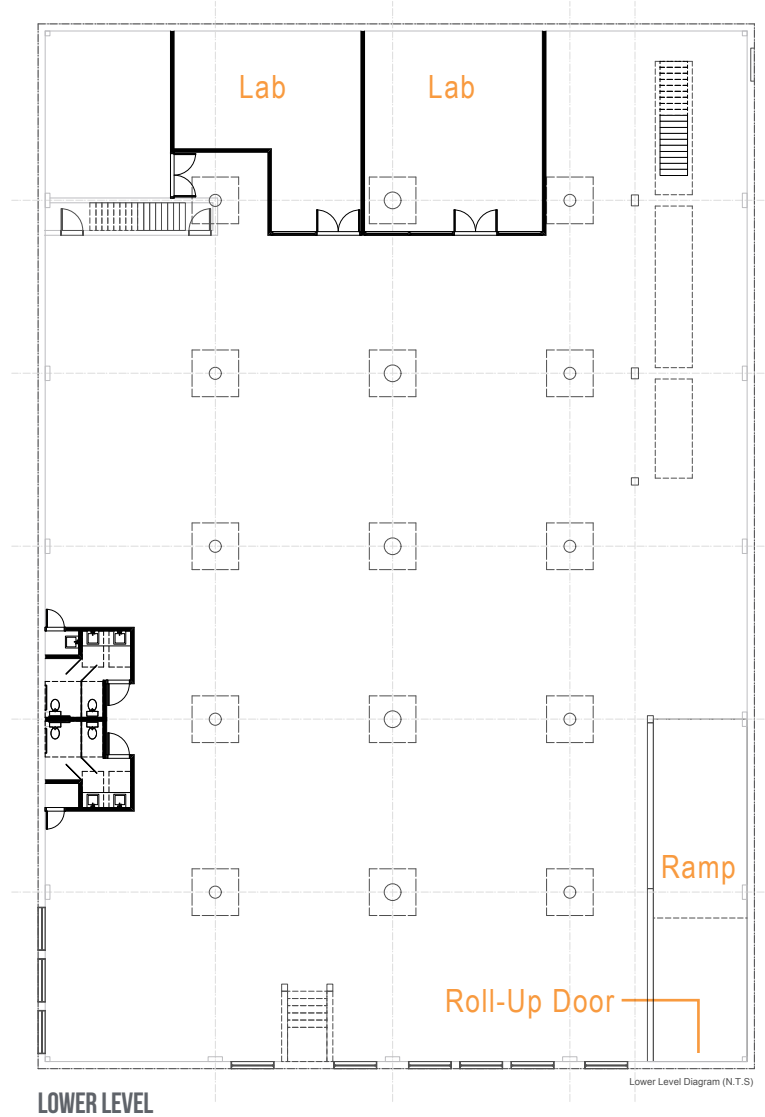
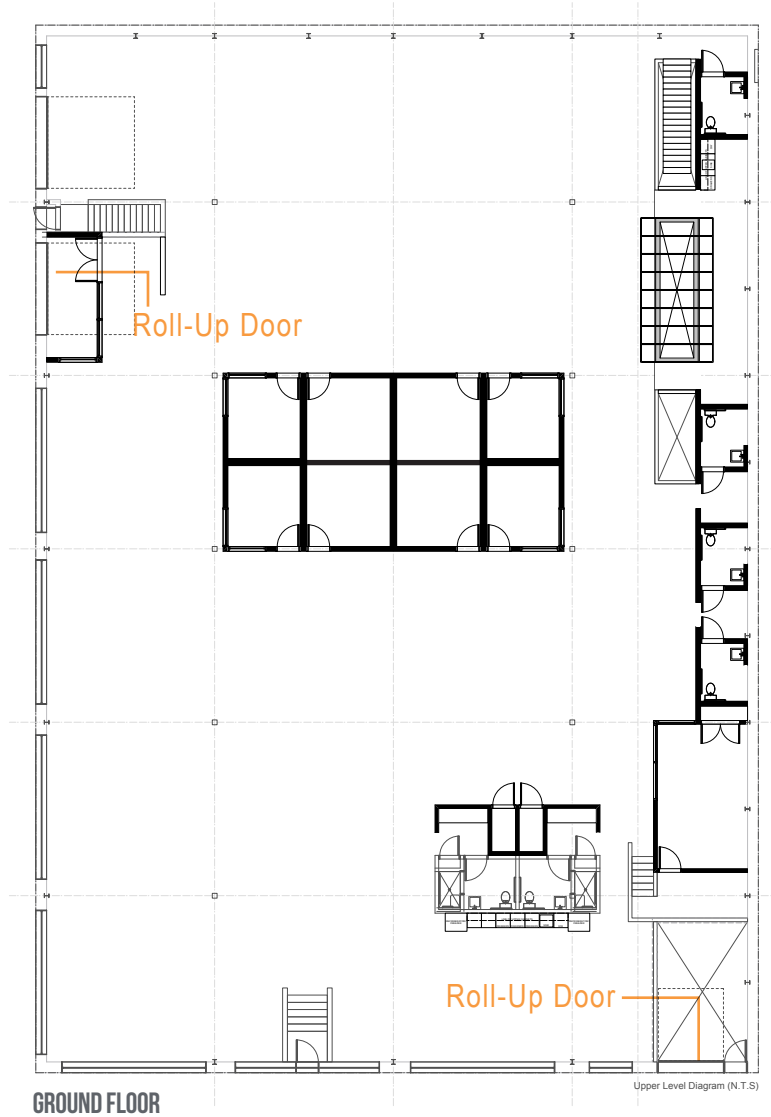
201 11TH STREET

Floor Plans

Ground Floor: +/- 14,496 Square Feet

Lower Level: +/- 14,496 Square Feet

TOTAL: +/- 28,992 Square Feet



201 11TH STREET

LOCATION OVERVIEW

Desirable South of Market location, walkable to nearby amenities, public transportation and to surrounding neighborhoods.



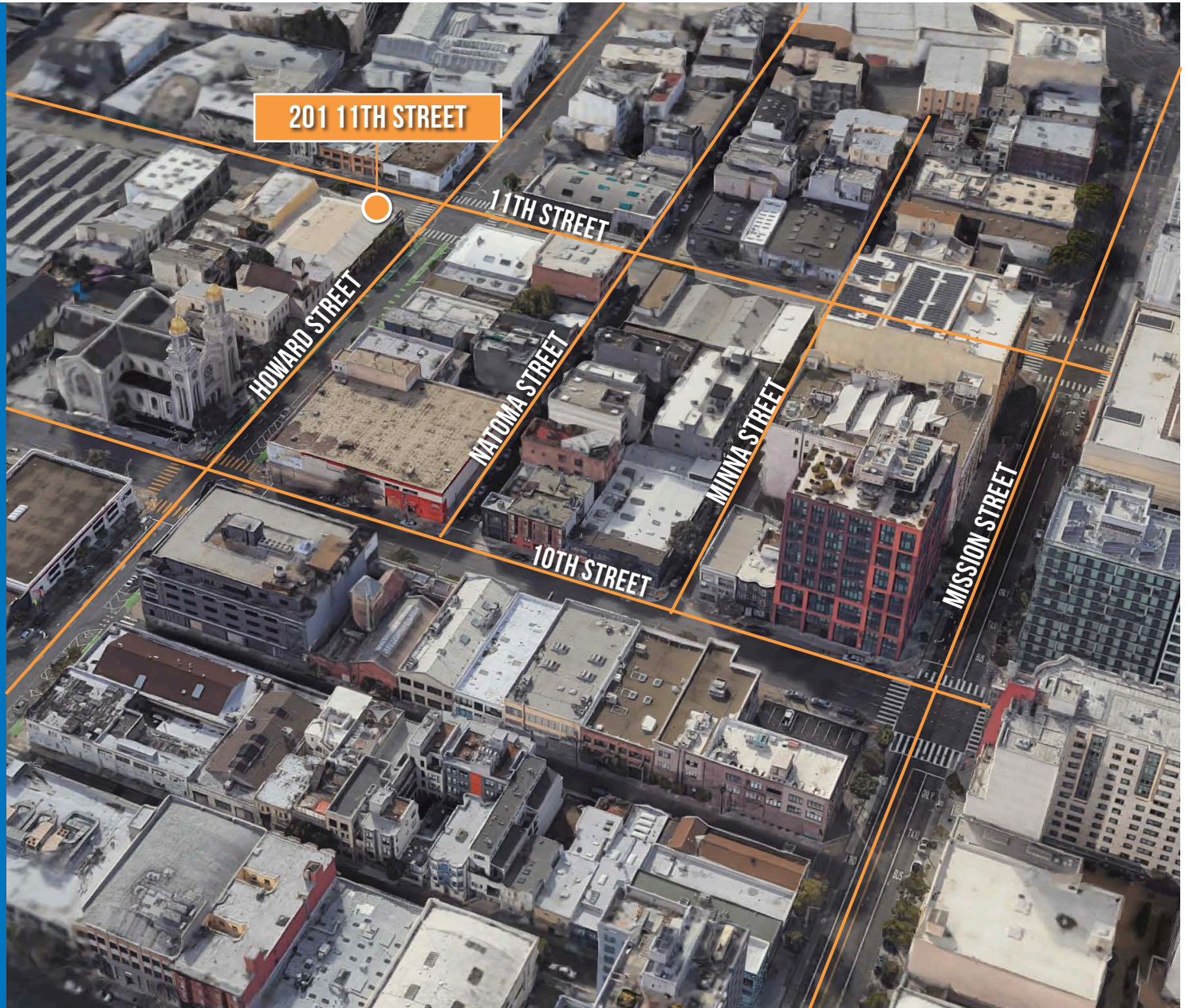
05 MIN to Civic Center Bart
12 MIN to Mid-Market
15 MIN to Hayes Valley



06 MIN to Hayes Valley
10 MIN to Union Square
12 MIN to Financial District



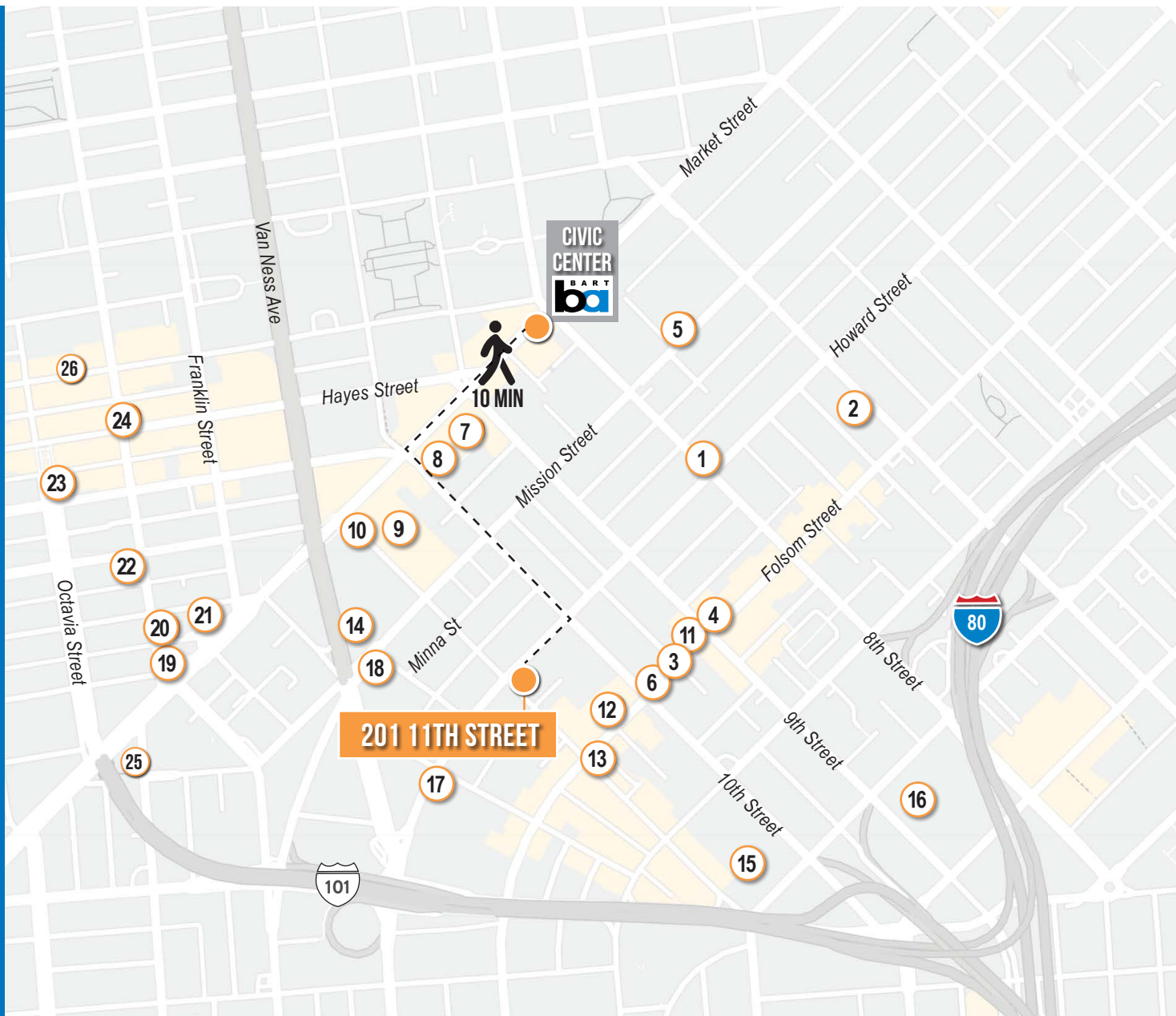
03 MIN to 101 On-Ramp
04 MIN to 80 On-Ramp
08 MIN to 280 On-Ramp



201 11TH STREET

NEARBY AMENITIES

- 1.....Harvest Urban Market
- 2.....Sightglass Coffee
- 3.....Dento Piano Cafe and Bar
- 4.....Azucar Lounge
- 5.....City Beer Store
- 6.....Sextant Coffee Roasters
- 7.....Walgreens
- 8.....Microsoft
- 9.....Square
- 10.....Uber
- 11.....Northern China BBQ
- 12.....Extra Space Storage
- 13.....Basil Canteen
- 14.....Blue Bottle Coffee
- 15.....Costco
- 16.....Trader Joe's
- 17.....1601 Bar & Kitchen
- 18.....Zaoh Sushi Restaurant
- 19.....Espetus Churrascaria
- 20.....Hotel Biron
- 21.....Zuni Cafe
- 22.....Rich Table
- 23.....Biergarten
- 24.....Absinthe Brasserie & Bar
- 25.....Martuni's
- 26.....Birba



201 11TH STREET



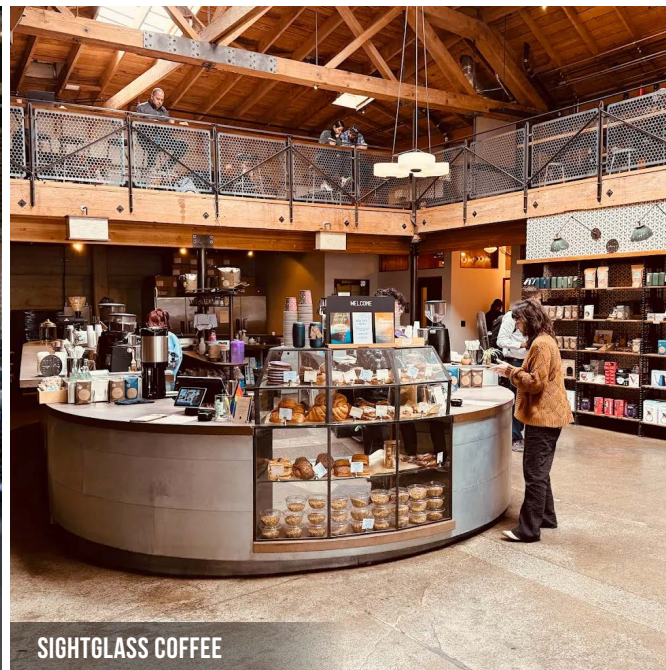
AZUCAR LOUNGE



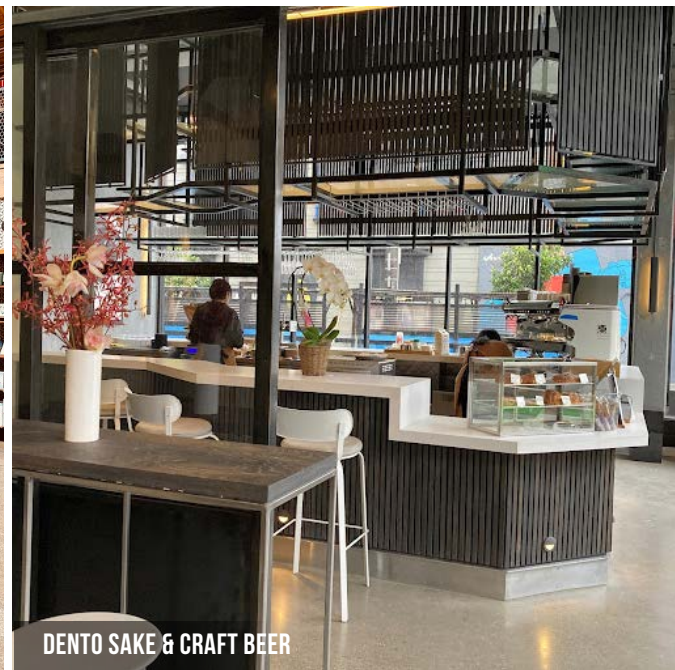
RICH TABLE



BASIL CANTEEN



SIGHTGLASS COFFEE



DENTO SAKE & CRAFT BEER

201 11TH STREET



Corp. Lic. 01112906
www.tcpre.com

ZACH HAUPERT

D 415.539.1121 C 415.812.1219
zhaupert@tcpre.com DRE # 01822907

MICHAEL SANBERG

D 415.539.1103 C 415.697.6088
msanberg@tcpre.com DRE # 01930041

TREVOR GUDIM

D 415.539.1122 C 858.922.2632
trevor@tcpre.com DRE # 01979980

This document has been prepared by Touchstone Commercial Partners for advertising and general information only. Touchstone Commercial Partners makes no guarantees, representations or warranties of any kind, expressed or implied, regarding the information including, but not limited to, warranties of content, accuracy and reliability. Any interested party should undertake their own inquiries as to the accuracy of the information. Touchstone Commercial Partners excludes unequivocally all inferred or implied terms, conditions and warranties arising out of this document and excludes all liability for loss and damages arising there from. This publication is the copyrighted property of Touchstone Commercial Partners and/or its licensor(s). ©2025. All rights reserved.