

±2,324 - ±7,243 RSF

2ND GEN FOOD / RESTAURANT SPACES
AVAILABLE FOR LEASE

MAINst CUPERTINO





**nineteen
800**

**2nd Generation Food Space
(Former Meet Fresh)
(Up to ±7,243 RSF (Full Building Available))
±5,599 RSF
AVAILABLE FOR LEASE**



**MAIN
STREET
LOFTS**

**Residence
Inn[®]
Marriott**

**2nd Gen Bar / Restaurant Space
±2,324 RSF
AVAILABLE FOR LEASE**

**1,400 Stall
Garage**

**2nd Gen Restaurant with Large Outdoor Patio
(Space also includes ±867 SF Patio & ±1,080 SF
Mezzanine with Office/Storage)
±3,421 SF
AVAILABLE FOR LEASE**

STEVENS CREEK BOULEVARD

PROJECT

Highlights



**±2,324 RSF Second
Generation Bar/
Restaurant Available**



**Over 2,000 Parking
Stalls (Surface and
Central Garage)**



**Cupertino's Premier
Shopping and Dining
Destination**



**±3,421 SF Second
Generation End-Cap
Restaurant Space Available**



**±5,599 RSF Second
Generation Food
Space Available**

Restaurant Co-Tenancy



PROPERTY Site Plan

- Signed Lease
- In Lease
- Available

Available
±2,324 RSF
2nd Gen Bar/Restaurant Space

Available
±3,421 SF
2nd Gen End-Cap Restaurant Space
(Space also includes ±867 SF Patio & ±1,080 SF Mezzanine with Office/Storage)

Available
±5,599 RSF
2nd Gen Food Space
(Former Meet Fresh)
(Up to ±7,243 RSF (Full Building) available)

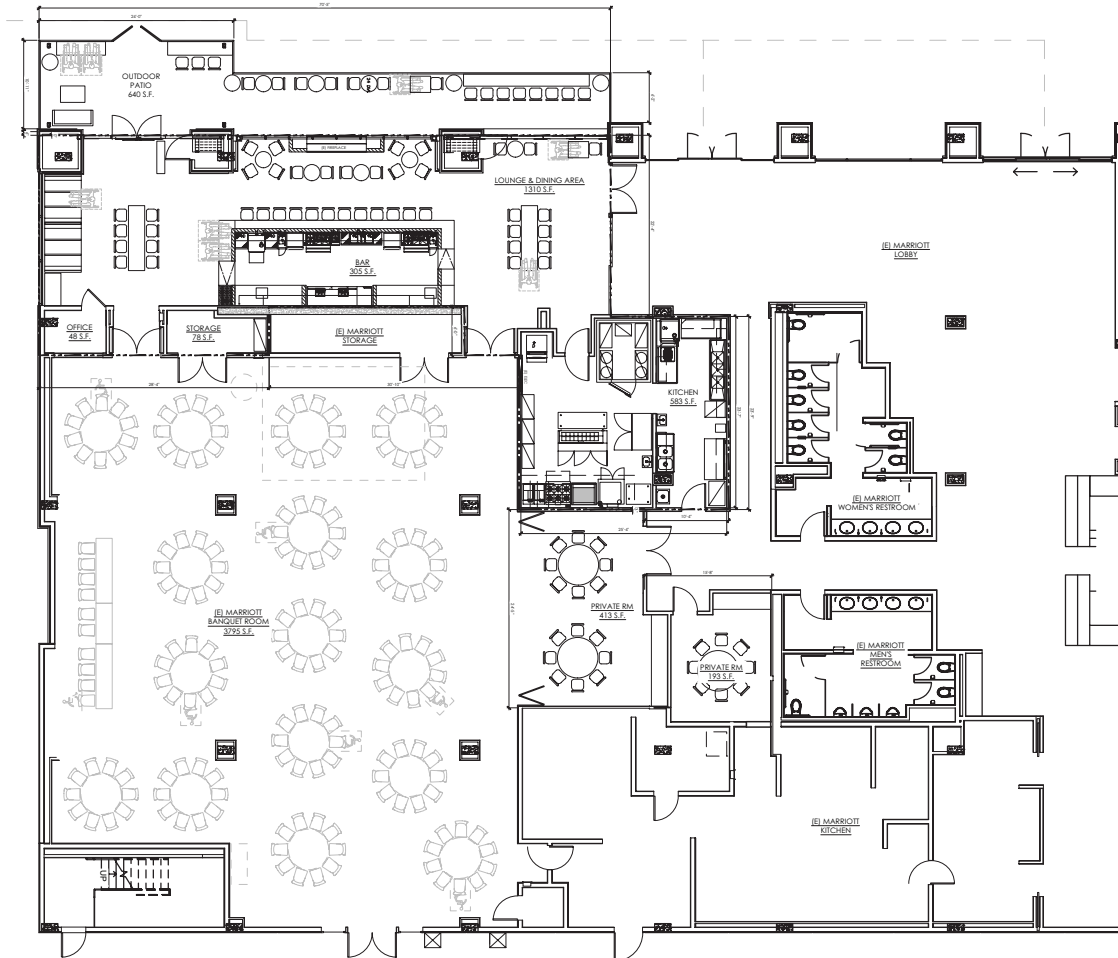


Floor Plan

±2,324 RSF



TOWN SQUARE

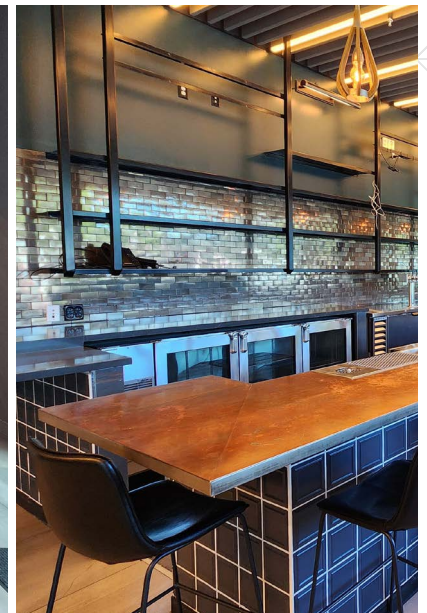
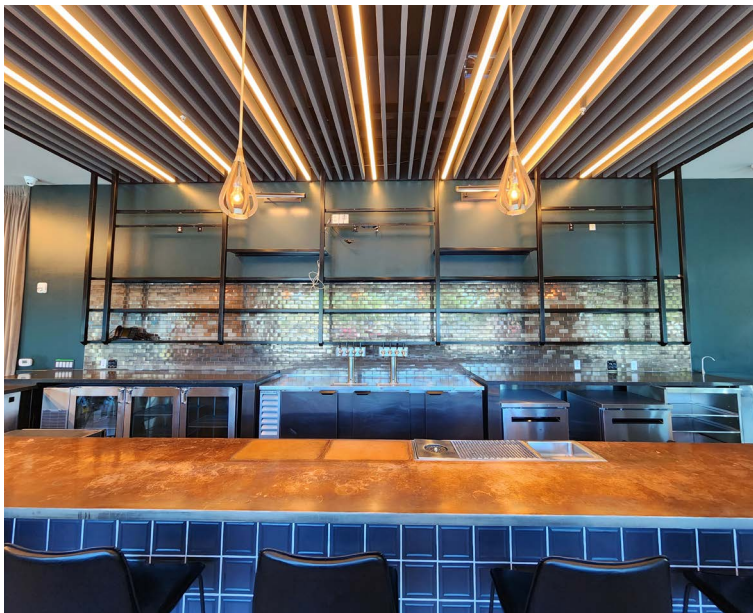
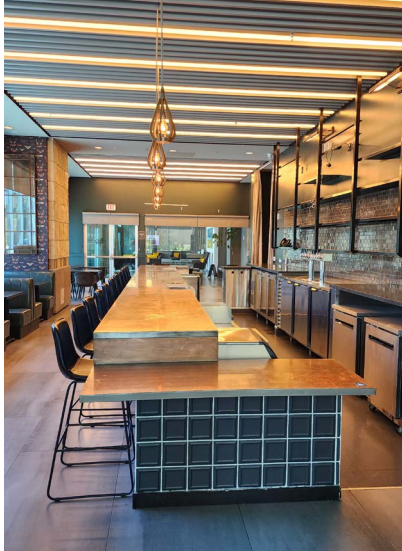


Seeking **Craft Cocktail Bar**

Space has direct access into the Hotel

19429 STEVENS CREEK BLVD

Gallery : Interior



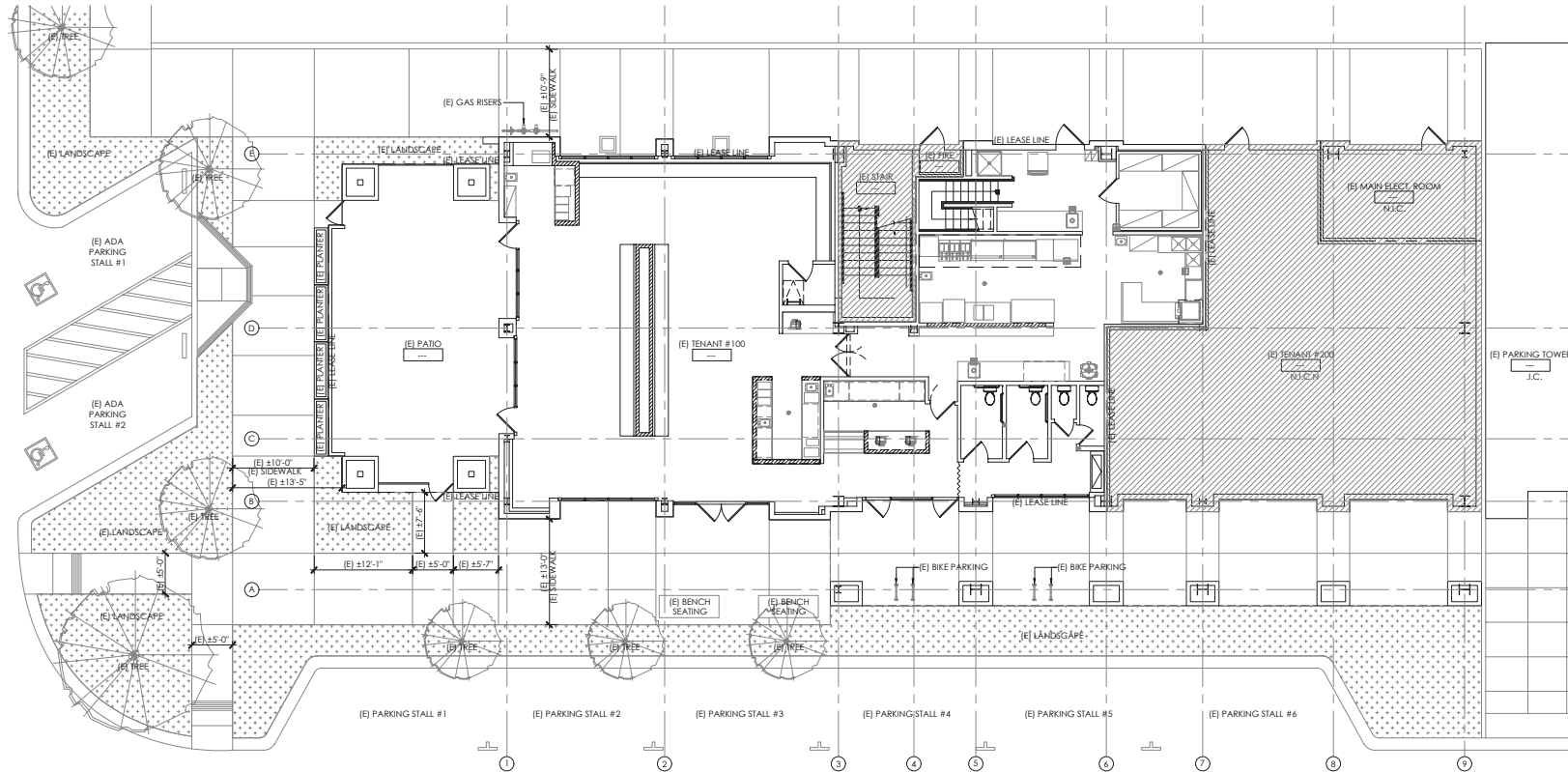
19429 STEVENS CREEK BLVD

Gallery : Kitchen & Patio



Floor Plan

±3,421 SF



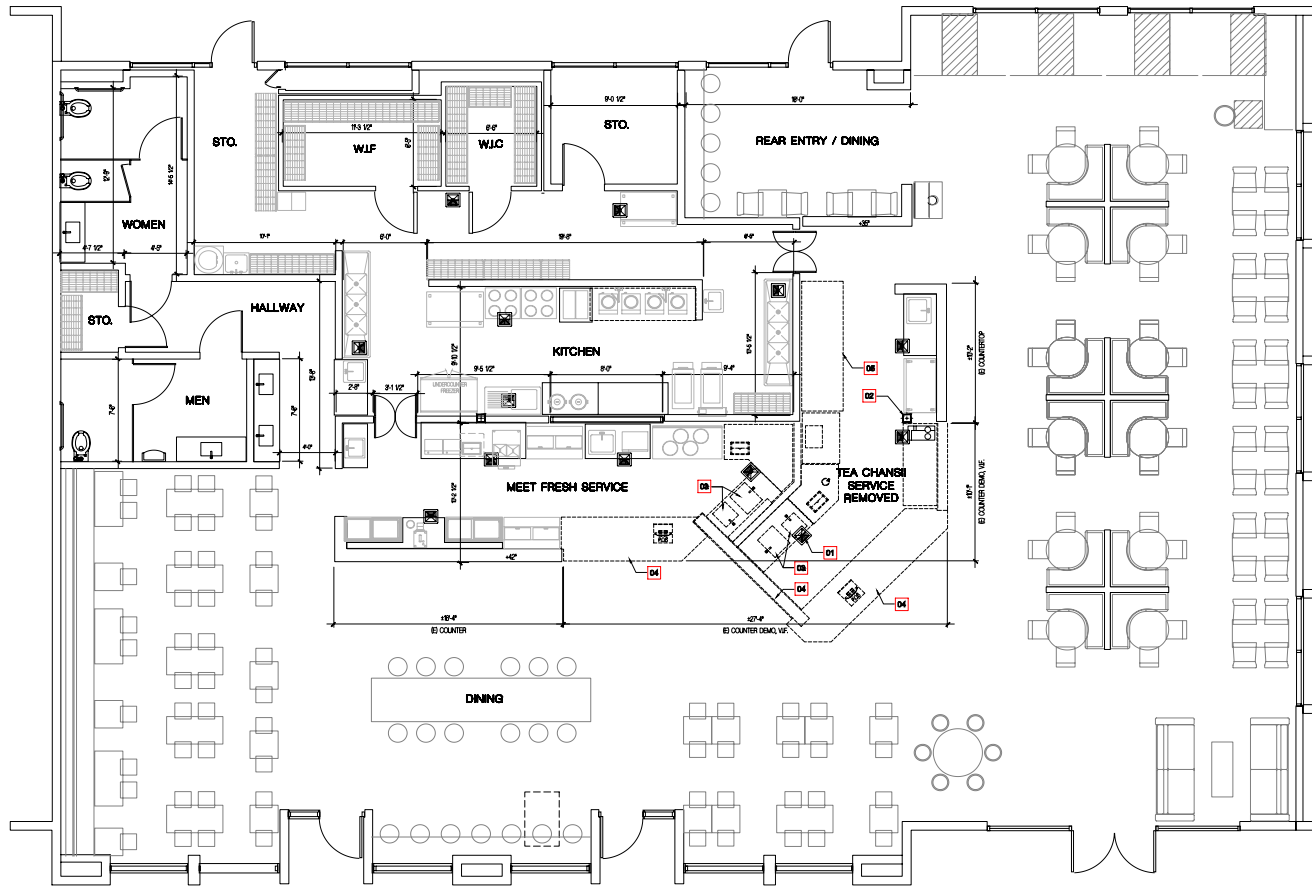
Space also includes ±867 S.F. Patio & ±1,080 S.F. Mezzanine with Office/Storage

Former



Floor Plan

±5,599 RSF



Up to ±7,243 RSF (Full Building) Available

Former



Gallery



CLOSE-UP
Aerial


±12,000 EMPLOYEES

280

JUNIPERO SERRA FWY: 164,000 ADT

nineteen
800

MAIN
STREET
LOFTS

Residence
Inn®
Marriott

1,400 Stall
Garage

































STEVENS CREEK BOULEVARD: 25,860 ADT

MARKET Aerial

Homestead Square

- SAFeway
- ULTA BEAUTY
- Michaels
- ROSS DRESS FOR LESS

99 RANCH MARKET

Apple Park
±12,000 EMPLOYEES

TOUS Les JOURS
STARBUCKS

Lawrence Station

- savers
- L & L
- Stard
- GROCERY OUTLET Bargain Market
- SUBWAY

BJ's RESTAURANT BREWHOUSE

Apple

TARGET

WHOLE FOODS MARKET

THE RISE
MAJOR MIXED-USE DEVELOPMENT PROJECT

HARBOR FREIGHT
QUALITY TOOLS LOWEST PRICES

WOLFE RD.: 24,000 ADT

STEVENS CREEK BLVD.: 25,860 ADT

JUNIPERO SERRA FWY.: 164,000 ADT



The Crossroads

- TJ-maxx
- PartyCity
- dishdash
- Spizilla CORNS

DAISO JAPAN
TOKYO CENTRAL

THE HOME DEPOT

- CVS pharmacy
- 99 RANCH MARKET
- CHIPOTLE MEXICAN GRILL

Stevens Creek Central

- SAFeway
- ROUND TABLE PIZZA HOUSTON
- pet food express
- Marshalls
- Total Wine & MORE
- PANDA EXPRESS

POPEYES
LOUISIANA KITCHEN

THE HOME DEPOT

TRADER JOE'S

Walgreens

MAINst CUPERTINO

 the econic company®

 SAND HILL PROPERTY COMPANY

JOSH SHUMSKY

(408) 863-1445

jshumsky@theeconiccompany.com

CaIDRE: 01883266

MATT SWEENEY

(408) 863-1444

msweeney@theeconiccompany.com

CaIDRE: 01746896

MEGAN MCARTHUR

(408) 863-1446

mmcarthur@theeconiccompany.com

CaIDRE: 02089762