

Built Dental Office

5521 N. Milwaukee Ave
Chicago, IL (Jefferson
Park)

Turn-Key dental office , standalone building with designated parking on corner of Milwaukee Ave & Menard Ave in densely populated Jefferson Park, perfect for PPO based practice. Equipment included at no additional cost. 4 opts, reception and waiting area, lab/sterilization, break room, and storage room. Landlord will contribute tenant improvement dollars, excellent opportunity to enter practice ownership for a fraction of the cost.



Sale Price:
\$650,000

Available SF:
1,350 SF

Ops:
4

Equipment :
Included

Parking:
Designated

JOSEPH ROSSI | 630.353.1190 | JROSSI@JROSSIANDASSOCIATES.COM
SHERA VITTORIO | 630.353.1190 | SHERA@JROSSIANDASSOCIATES.COM

5521 N Milwaukee Ave

Chicago, IL

AVAILABLE SPACES

Suite	Tenant	Size SF	Lease Type	Lease Rate
5521 N Milwaukee Ave	Available	1,350 SF	NNN	\$40.00 SF/yr



5521 N Milwaukee Ave

Chicago, IL

Population

0.25 MILES

2,591

TOTAL POPULATION

9,564 | 31,839
0.5 MILES | 1 MILE

38.7

AVERAGE AGE

38.4 | 38.7
0.5 MILES | 1 MILE

Households and Income

0.25 MILES

1,120

TOTAL HOUSEHOLDS

3,877 | 13,074
0.5 MILES | 1 MILE

2.3

OF PERSONS PER HH

2.5 | 2.4
0.5 MILES | 1 MILE

0.25 Miles

39.6

AVERAGE AGE (MALE)

39.2 | 37.7
0.5 MILES | 1 MILE

38.6

AVERAGE AGE (FEMALE)

38.3 | 39.6
0.5 MILES | 1 MILE

0.25 Miles

\$78,687

AVERAGE HH INCOME

\$84,510 | \$90,587
0.5 MILES | 1 MILE

\$284,664

AVERAGE HOUSE VALUE

\$313,682 | \$343,661
0.5 MILES | 1 MILE

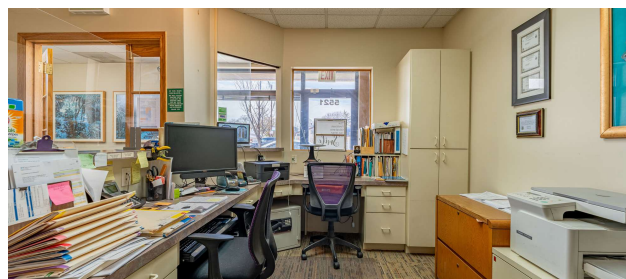
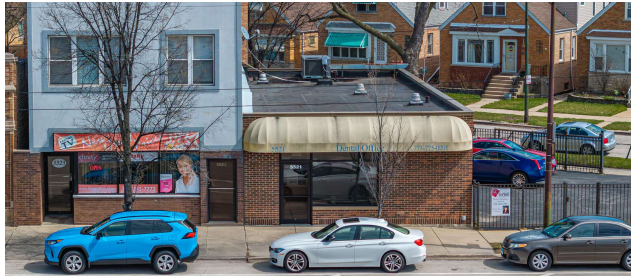
* Demographic data derived from 2020 ACS - US Census



5521 N Milwaukee Ave

Chicago, IL

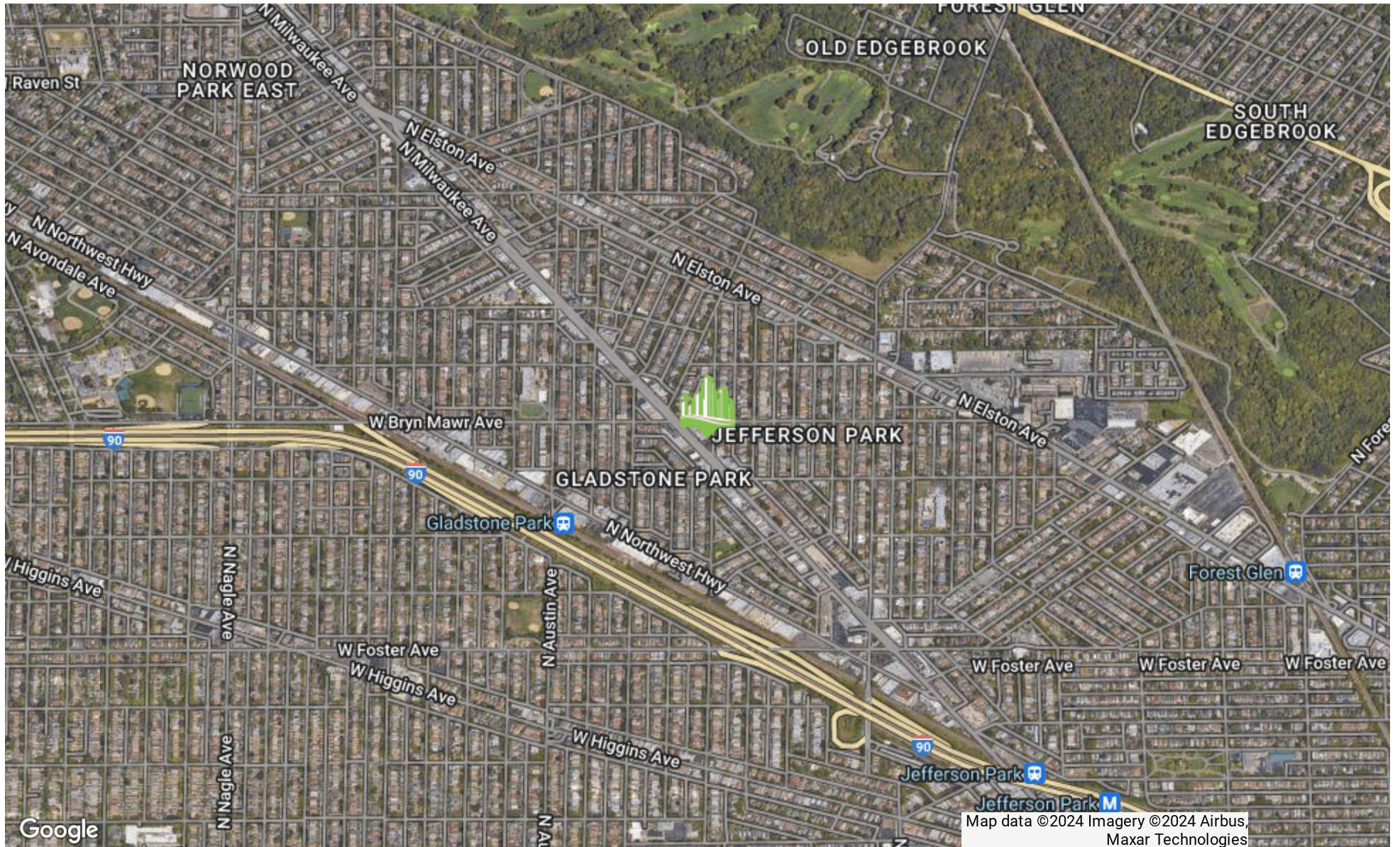
ADDITIONAL PHOTOS



5521 N Milwaukee Ave

Chicago, IL

RETAILER MAP



Map data ©2024 Imagery ©2024 Airbus, Maxar Technologies