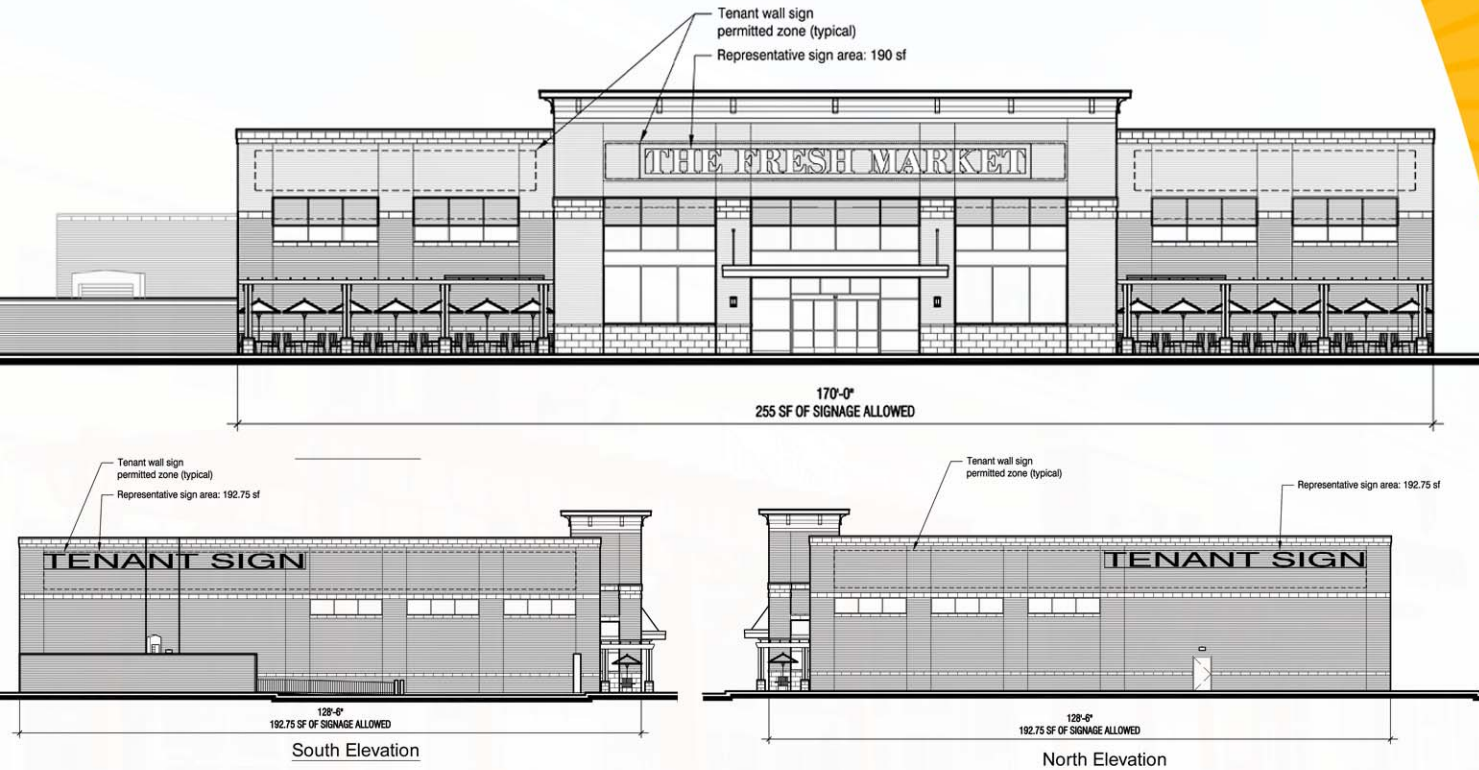


FOR LEASE | FORMER SPECIALTY GROCERY

NAPERVILLE CROSSINGS - NAPERVILLE, IL

2700 Showplace Dr, Naperville, IL 60564



PROPERTY HIGHLIGHTS

-Former FREESTANDING The Fresh Market Space Available for Assignment or Sublease

-Located in Naperville Crossings at the NW corner of Route 59 and 95th St. This affluent area offers high traffic counts and numerous nearby national retailers

SPACE DETAILS

Size: 24,799 SF
 +Mezzanine (Additional) 2,960 SF
 Frontage: 170 Feet
 Lease Expiration: 10 Year Initial Term
 Options: 6 x 5 Years

TRAFFIC COUNTS

49,000 VPD on State Route 59

DEMOGRAPHICS

	1 MILE	2 MILE	3 MILE
POPULATION			
	11,920	36,411	87,073
HOUSEHOLDS			
	4,385	12,155	28,833
AVERAGE HOUSEHOLD INCOME			
	\$170,454	\$163,980	\$144,027

Source: Applied Geographic Solutions (2016 Estimates)

JOIN THESE CO-TENANTS & MORE!

JACK BARSON

jack@terrannational.com
 (216) 912-5810
 29225 Chagrin Blvd. Suite 360
 Pepper Pike, OH 44122

TERRA NATIONAL
 REAL ESTATE GROUP
 www.terrannational.com

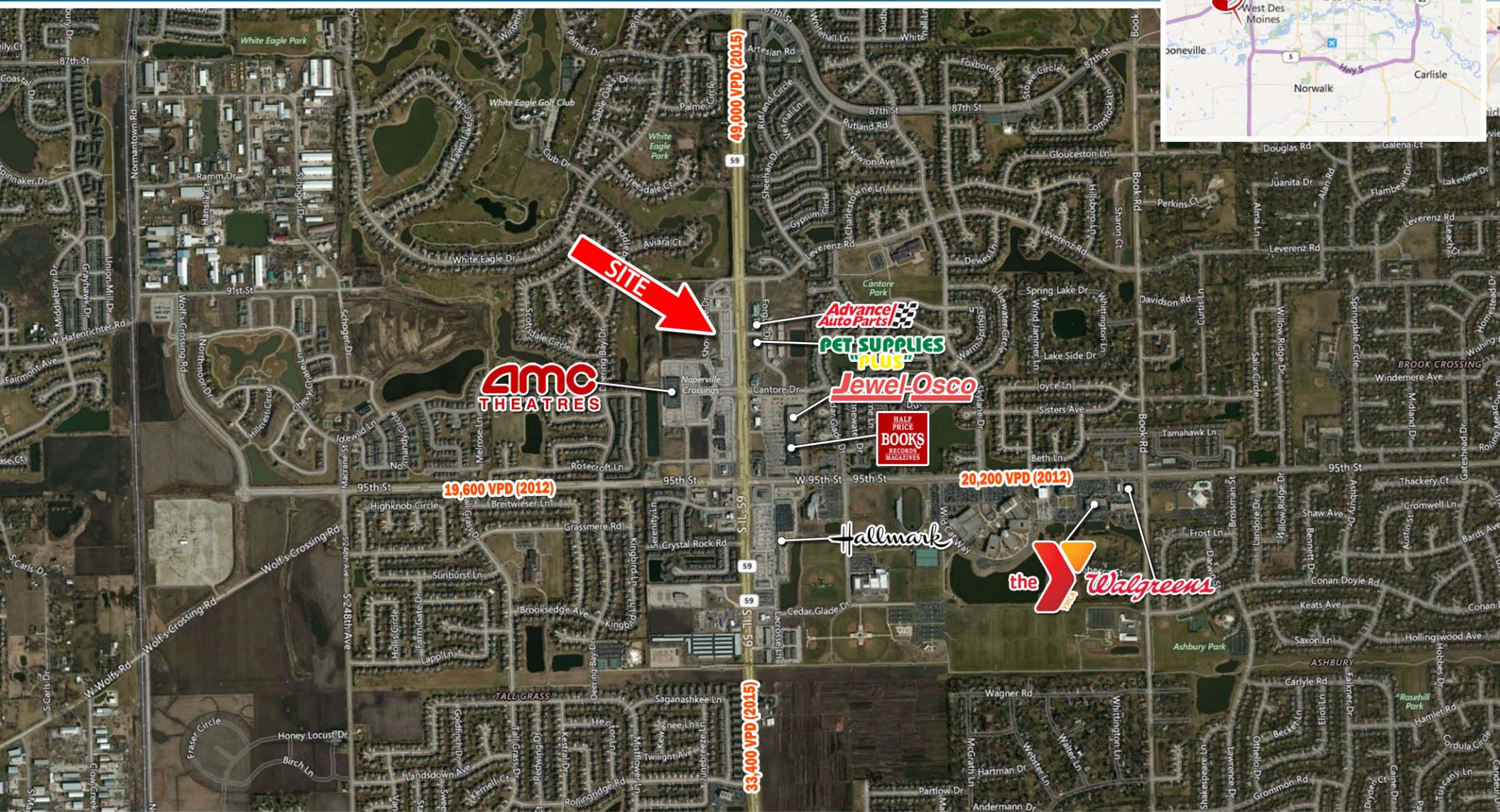
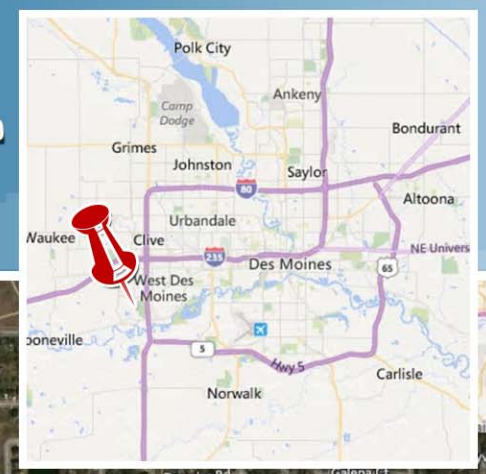
MATT TABLOFF

mrtabloff@hilcoglobal.com
 (847) 849-2983
 5 Revere Dr Suite 320
 Northbrook, IL 60062

Hilco
 Real Estate
 www.hilcorealestate.com

FOR LEASE | FORMER SPECIALTY GROCERY | AERIAL

NAPERVILLE CROSSINGS - NAPERVILLE, IL



JACK BARSON
 jack@terranational.com
 (216) 912-5810
 29225 Chagrin Blvd. Suite 360
 Pepper Pike, OH 44122

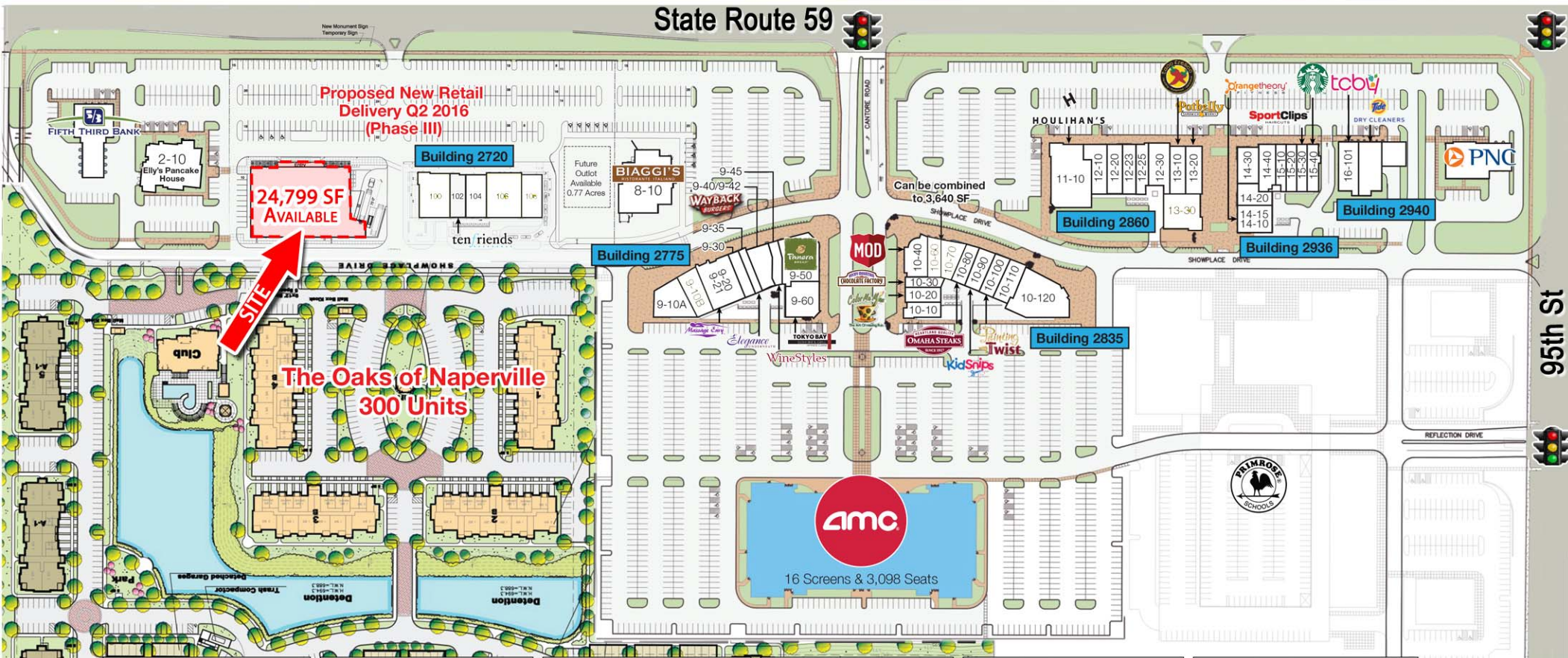
TERRA NATIONAL
 REAL ESTATE GROUP
 www.terranational.com

MATT TABLOFF
 mtabloff@hilcoglobal.com
 (847) 849-2983
 5 Revere Dr Suite 320
 Northbrook, IL 60062

Hilco
 Real Estate
 www.hilcorealestate.com

FOR LEASE | FORMER SPECIALTY GROCERY | SITE PLAN

NAPERVILLE CROSSINGS - NAPERVILLE, IL



OUTLOTS				
Space	Buildings	Tenant	SF	
#2-10	2656	Elly's Pancake House	6,959	
	2708	The Fresh Market	21,311	
#8-10	2752	Biaggi's	8,500	
*Total Outlots GLA				15,459
*The Fresh Market not included in total square footage				
BUILDING 2720				
Suite	Tenant	SF		
100	Available	4,000		
102	Ten Friends	1,800		
104	Amazing Leah	2,842		
106	Available	4,328		
108	Available	2,500		
Total Outlot GLA				15,270

BUILDING 2775				
Space	Suite	Tenant	SF	
#9-10A	101	PT Solutions	3,000	
#9-10B	103	Available	2,816	
#9-20 & 9-21	107	Massage Envy	4,477	
#9-30	111	Expedia Cruiseship	1,100	
		Centara	1,400	
#9-35	113	Elegance Underneath	1,400	
#9-40/90-42	117	Wayback Burgers	2,155	
#9-45	121	Wine Styles	1,200	
#9-50	123	Panera Bread	4,734	
#9-60	127	Tokyo Bay	3,420	
Total Building GLA				24,302

BUILDING 2835				
Space	Suite	Tenant	SF	
#10-10	103	Paris Creperia	1,600	
#10-20	107	Color Me Mine	1,600	
#10-30	111	Rocky Mountain	1,000	
#10-40	115	Mod Pizza	2,400	
#10-60	119	Available	1,840	
#10-70	128	Available	1,800	
#10-80	127	Omaha Steaks	1,500	
#10-90	131	Kid Snips	1,500	
#10-100	135	Waxing the City	1,500	
#10-110	137	Painting with a Twist	2,424	
#10-120	139	Workout Anytime	6,106	
Total Building GLA				23,270

BUILDING 2860				
Space	Suite	Tenant	SF	
#11-10	100	Houlihan's	7,000	
#12-10	104	Sarah's Grill	2,300	
#12-20	106	Nothing Burndt Cake	1,846	
#12-23	108	C2 Education	2,496	
#12-25	110	Battery Grant	1,600	
#12-30	112	Michael Graham Salon	2,800	
#13-10	114	Taco Fresco	2,000	
#13-20	118	Potbelly	2,400	
#13-30	126	Available	3,902	
Total Building GLA				26,344

Building 2936				
Space	Suite	Tenant	SF	
#14-10 & 14-15	102	Orange Theory Fitness	2,736	
#14-20	106	Dental Office	2,002	
#14-30	108	Happiness Is Pets	2,485	
#14-40	110	AT & T	1,844	
#15-10	112	Grit Nutrition	1,339	
#15-20	116	Robeks	1,164	
#15-30	118	SportClips	1,200	
#15-40	120	Starbucks	1,976	
Total Building GLA				14,746

BUILDING 2940				
Space	Suite	Tenant	SF	
#16-100	104	Tide Dry Cleaners	3,260	
#16-101	100	TCBY	1,833	
Total Building GLA				5,093
Outlots				15,459
Building 2720				15,270
Building 2775				24,302
Building 2835				23,270
Building 2860				26,344
Building 2936				14,746
Building 2940				5,093
TOTAL GLA				124,484

MORE INFO

JACK BARSON

jack@terrannational.com
(216) 912-5810

29225 Chagrin Blvd. Suite 360
Pepper Pike, OH 44122

TERRA NATIONAL
REAL ESTATE GROUP

www.terrannational.com

MATT TABLOFF

mtabloff@hilcoglobal.com
(847) 849-2983

5 Revere Dr Suite 320
Northbrook, IL 60062

Hilco
Real Estate
www.hilcorealestate.com

NORTH