



1208 Central Parkway

1208 Central Parkway Cincinnati, Ohio 45202

Property Highlights

- Multiple Suites Available
- High End Creative Office Spaces
- Upscale Building With Rooftop Patio
- Close Proximity to TQL Stadium
- Modern Open Floor Layouts
- Walking Distance to Music Hall and Washington Square Park
- Onsite Parking Available

Lease Rate:	Call Agent
Building Size:	18,500 SF
Available SF:	3,122 SF

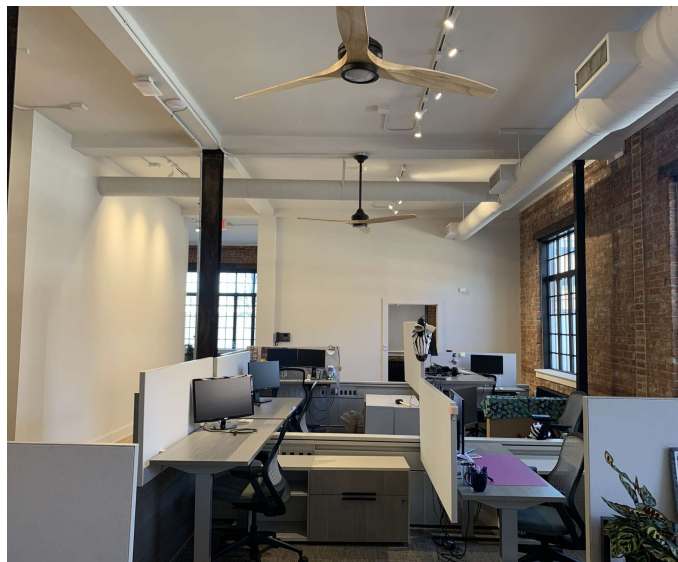
For More Information

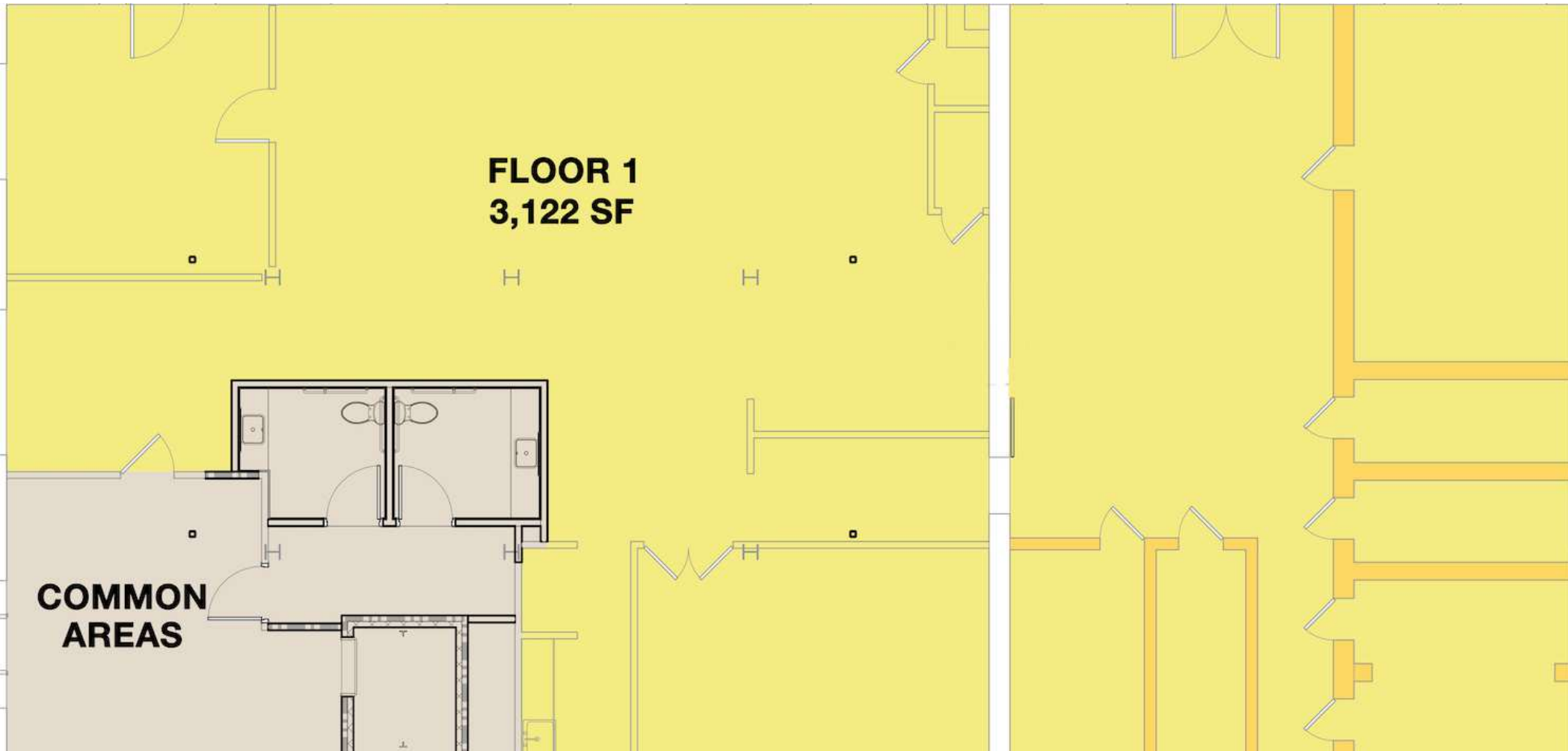
Matt Hiudt

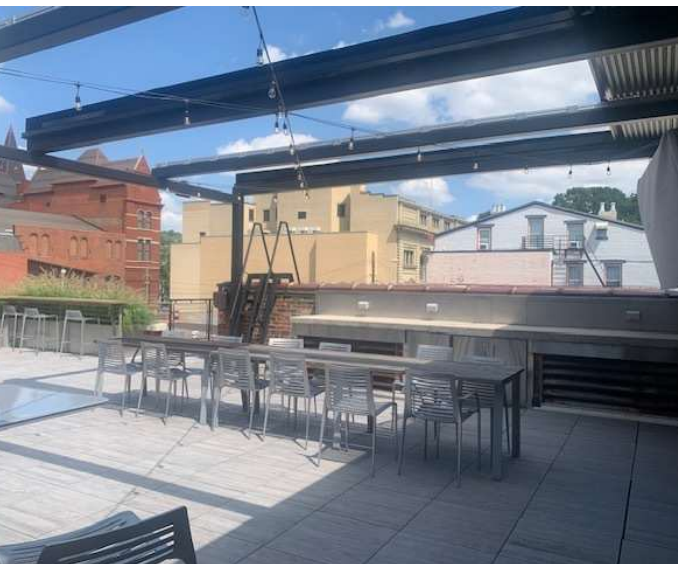
O: 513 322 6310
 mhiudt@bergman-group.com | OH #SAL.2018002042

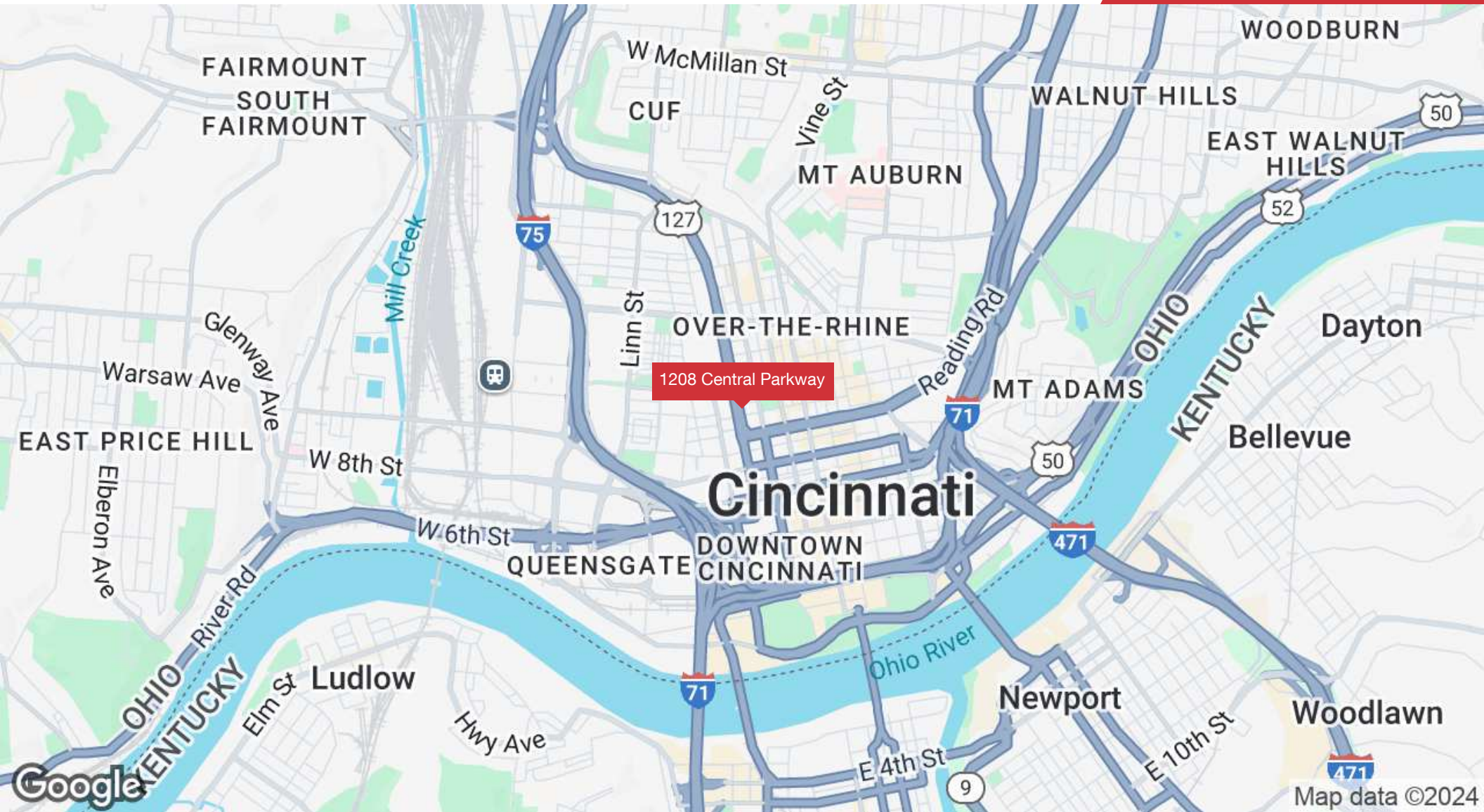
Ryan Van Dulman

O: 513 322 8328
 rvandulman@bergman-group.com | OH #SAL.2023000419











Map data ©2024 Google Imagery ©2024 Airbus, Landsat / Copernicus, Maxar Technologies

Population	1 Mile	3 Miles	5 Miles
Total Population	20,478	135,790	307,358
Average Age	30.7	34.2	35.3
Average Age (Male)	30.5	34.2	34.6
Average Age (Female)	32.0	35.1	36.4

Households & Income	1 Mile	3 Miles	5 Miles
Total Households	13,682	75,218	158,197
# of Persons per HH	1.5	1.8	1.9
Average HH Income	\$59,407	\$54,689	\$62,075
Average House Value	\$215,210	\$166,972	\$169,702

2020 American Community Survey (ACS)

