

5306 PALMERO COURT

BUFORD, GA
30518

Industrial Property For Lease

DOUG BURGGRAAF

Vice President

770.601.3620

dburggraaf@kingindustrial.com

CLYDE PURMORT

Advisor

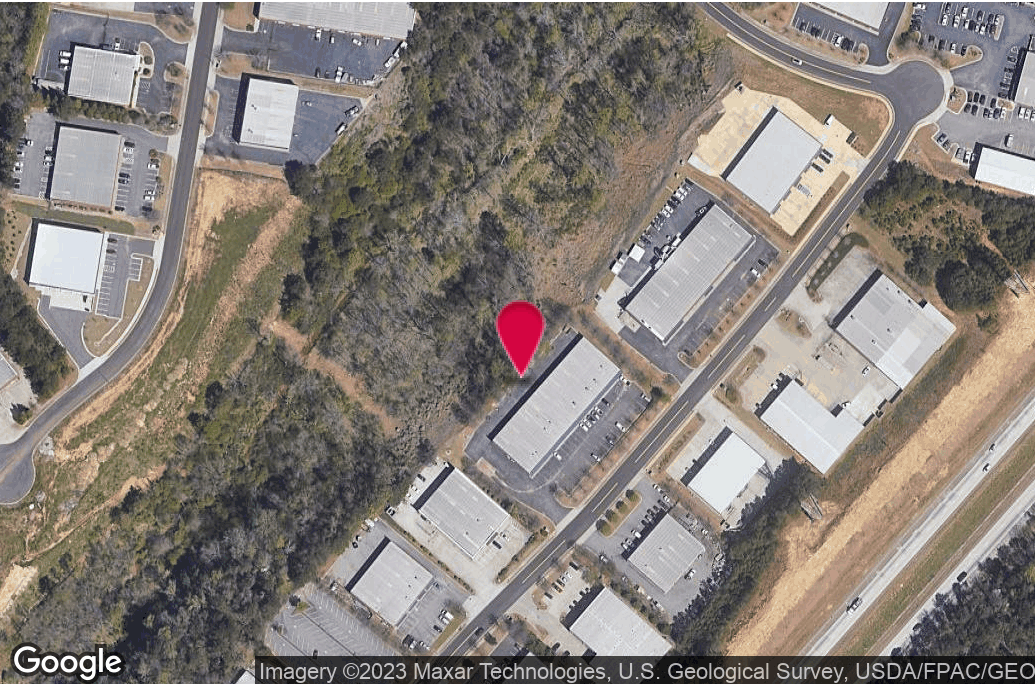
941.323.0763

cpurmort@kingindustrial.com

King Industrial
Realty, Inc.

Industrial • Commercial • Investment
404.942.2000 | kingindustrial.com

EXECUTIVE SUMMARY



Imagery ©2023 Maxar Technologies, U.S. Geological Survey, USDA/FPAC/GEO

DOUG BURGGRAAF

Vice President

770.601.3620

dburggraaf@kingindustrial.com

Every effort has been made to provide accurate information, but no liability is assumed for errors or omissions.

CLYDE PURMORT

Advisor

941.323.0763

cpurmort@kingindustrial.com

PROPERTY HIGHLIGHTS

- 500+/-SF Office
- 16' Clear Ceiling
- 1 Drive In Door
- 1 Exterior Dock Platform

OFFERING SUMMARY

Available SF:	2,000 SF
Building Size:	18,000 SF

King Industrial
Realty, Inc.

CORFAC
INTERNATIONAL

Industrial • Commercial • Investment
404.942.2000 | kingindustrial.com

ADDITIONAL PHOTOS



DOUG BURGGRAAF

Vice President

770.601.3620

dburggraaf@kingindustrial.com

Every effort has been made to provide accurate information, but no liability is assumed for errors or omissions.

CLYDE PURMORT

Advisor

941.323.0763

cpurmort@kingindustrial.com

King Industrial
Realty, Inc.

CORFAC
INTERNATIONAL

Industrial • Commercial • Investment
404.942.2000 | kingindustrial.com

LOCATION MAP



Google

Map data ©2023

DOUG BURGGRAAF

Vice President

770.601.3620

dburggraaf@kingindustrial.com

Every effort has been made to provide accurate information, but no liability is assumed for errors or omissions.

CLYDE PURMORT

Advisor

941.323.0763

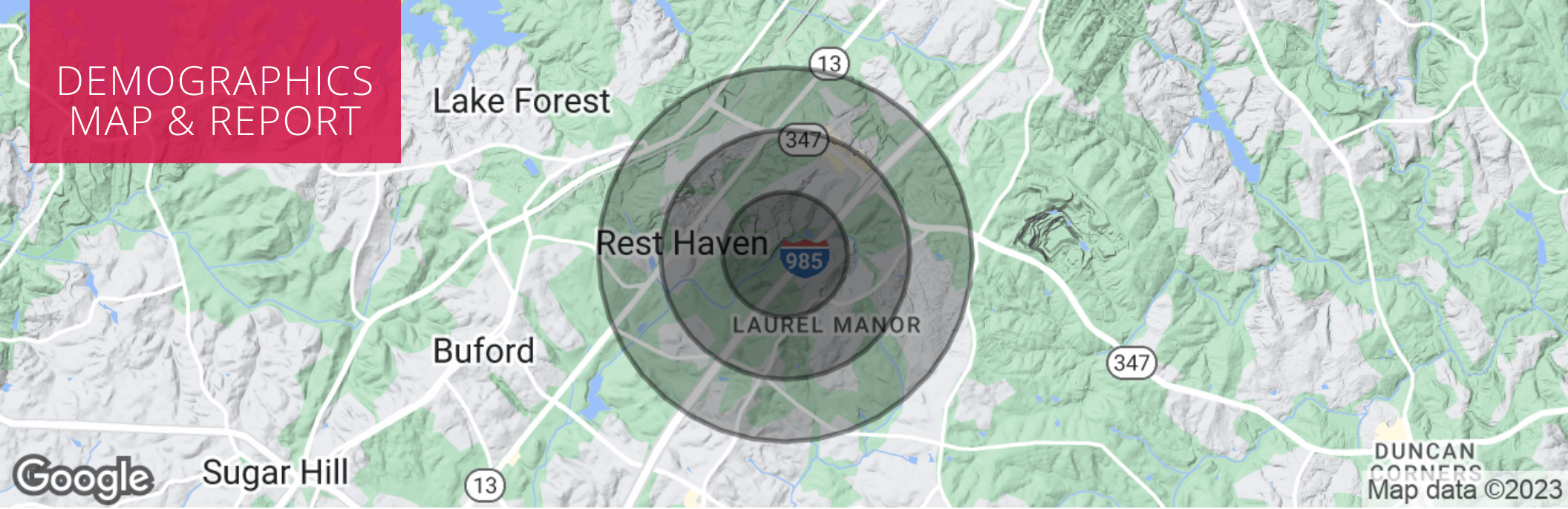
cpurmort@kingindustrial.com

King Industrial
Realty, Inc.

CORFAC
INTERNATIONAL

Industrial • Commercial • Investment
404.942.2000 | kingindustrial.com

DEMOGRAPHICS MAP & REPORT



POPULATION

	0.5 MILES	1 MILE	1.5 MILES
Total Population	1,031	4,367	8,919
Average Age	32.6	36.5	39.6
Average Age (Male)	28.2	28.7	30.3
Average Age (Female)	36.1	39.6	42.3

HOUSEHOLDS & INCOME

	0.5 MILES	1 MILE	1.5 MILES
Total Households	343	1,486	3,063
# of Persons per HH	3.0	2.9	2.9
Average HH Income	\$68,844	\$68,930	\$75,059
Average House Value	\$158,726	\$181,726	\$206,677

DOUG BURGGRAAF

Vice President

770.601.3620

dburggraaf@kingindustrial.com

CLYDE PURMORT

Advisor

941.323.0763

cpurmort@kingindustrial.com

Every effort has been made to provide accurate information, but no liability is assumed for errors or omissions.



Industrial • Commercial • Investment
404.942.2000 | kingindustrial.com

EXCLUSIVELY LISTED BY:

DOUG BURGGRAAF

Vice President

dburggraaf@kingindustrial.com

770.601.3620

CLYDE PURMORT

Advisor

cpurmort@kingindustrial.com

941.323.0763

KING Industrial
Realty, Inc.

Industrial • Commercial • Investment
404.942.2000 | kingindustrial.com