

**Reduced Price**



# Corporate Office For Sale

2401-2501 INTERNATIONAL LANE  
MADISON, WISCONSIN

## Gross Building Size

±159,404 SF

## Land Size

±13.9 Acres

## Zoning

SE (Suburban Employment)

## 2023 Taxes

\$111,556.70

## Sale Price

~~\$9,950,000~~ REDUCED: \$6,999,000

## Property Highlights

- Two, three story office buildings connected via a single story cafeteria area.
- Existing furniture systems available
- 675 surface parking spaces
- Current layout could seat ±900 employees
- Located near the entrance to the Dane County Airport with convenient access to the Madison Metro and Interstate system
- Long term ground lease with Dane County Regional Airport expires 2084

*For information, please contact:*

### Chuck Redjinski

Managing Director

t 608-663-6006

chuck.redjinski@nmrk.com

4602 S Biltmore Ln  
Suite 117

Madison, WI 53718

[nmrk.com](http://nmrk.com)

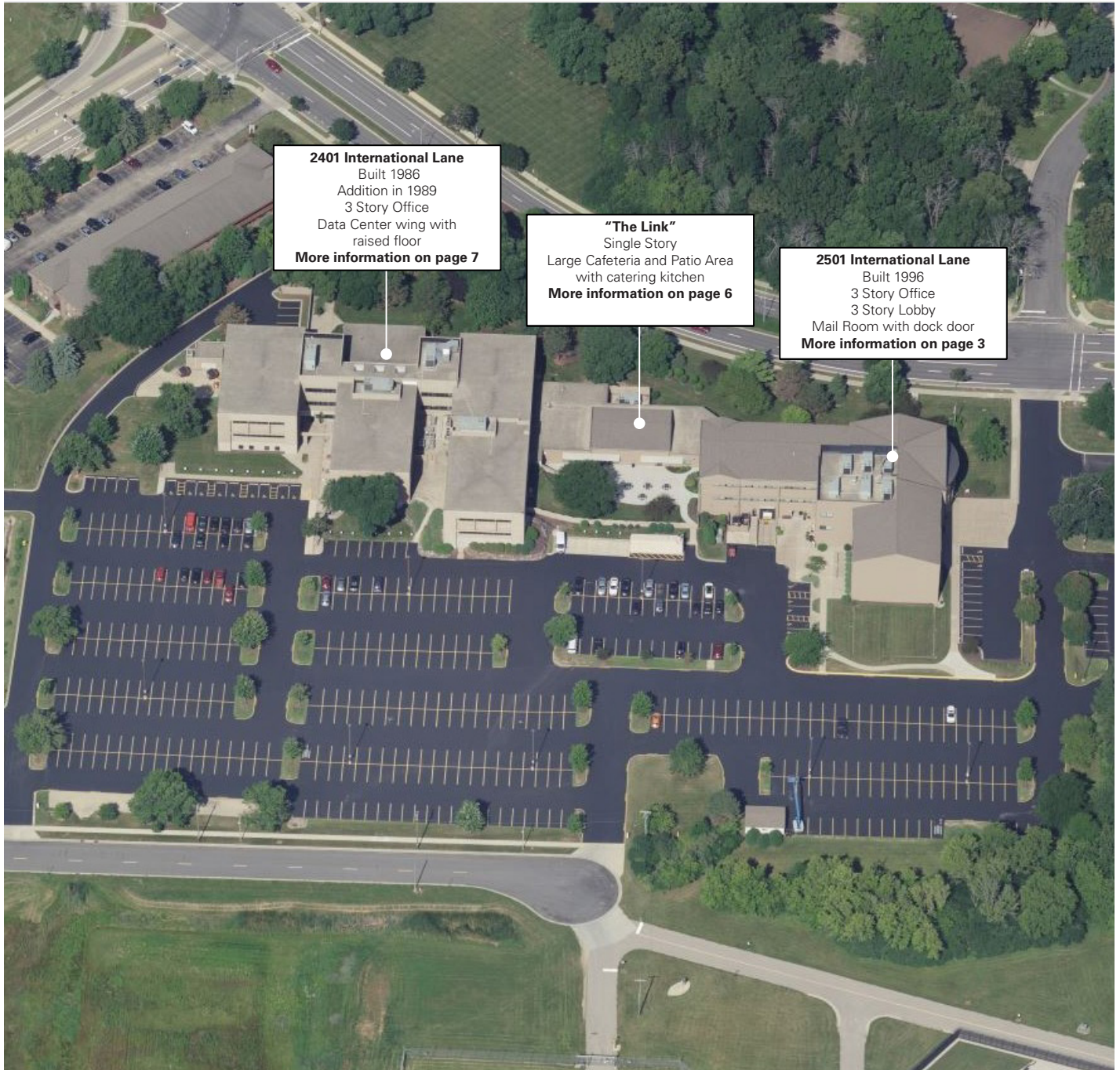


**NEWMARK**

The information contained herein has been obtained from sources deemed reliable but has not been verified and no guarantee, warranty or representation, either express or implied, is made with respect to such information. Terms of sale or lease and availability are subject to change or withdrawal without notice.



**2401-2501 INTERNATIONAL LANE, MADISON, WISCONSIN**



**2401 International Lane**  
Built 1986  
Addition in 1989  
3 Story Office  
Data Center wing with  
raised floor  
**More information on page 7**

**"The Link"**  
Single Story  
Large Cafeteria and Patio Area  
with catering kitchen  
**More information on page 6**

**2501 International Lane**  
Built 1996  
3 Story Office  
3 Story Lobby  
Mail Room with dock door  
**More information on page 3**

*For information, please contact:*

**Chuck Redjinski**  
*Managing Director*  
t 608-663-6006  
chuck.redjinski@nmrk.com  
[nmrk.com](http://nmrk.com)

**NEWMARK**

## 2401-2501 INTERNATIONAL LANE, MADISON, WISCONSIN

### 2501 International Lane



### 2501 INTERNATIONAL LANE

Building Features

#### Tax ID #

081030403109

#### Year Built

1996

#### Heating System

VAV system with hot water heat

#### Power

1600A switchgear

#### Generator

Leased from MG&E until August 2024

#### Freestanding Garage

635 SF

#### Stories

Three (3)

#### Fully Sprinkled

#### Items Of Note

Large three story lobby. First floor mail room with dock door. Multiple conference rooms.

### CONTACT

#### Chuck Redjinski

Managing Director

t 608-663-6006

chuck.redjinski@nmrk.com

[nmrk.com](http://nmrk.com)

# NEWMARK



2401-2501 INTERNATIONAL LANE, MADISON, WISCONSIN

2501 International Lane - Lobby



*For information, please contact:*

**Chuck Redjinski**

*Managing Director*

t 608-663-6006

chuck.redjinski@nmrk.com

**nmrk.com**

**NEWMARK**



**2401-2501 INTERNATIONAL LANE, MADISON, WISCONSIN**

**2501 International Lane**



*For information, please contact:*

**Chuck Redjinski**

*Managing Director*

t 608-663-6006

chuck.redjinski@nrmk.com

**nrmk.com**

**NEWMARK**

## The Link



### THE LINK

Building Features

#### Stories

One

#### Year Built

1996

#### Heating System

VAV system with hot water heat

#### Power

1600A switchgear

#### Zoning

SE (Suburban Employment)

#### Items Of Note

Large cafeteria with patio, catering kitchen, and vending machine area.

Building connects  
2401 International Ln to  
2501 International Ln.

### CONTACT

#### Chuck Redjinski

*Managing Director*

t 608-663-6006

chuck.redjinski@nrmk.com

[nrmk.com](http://nrmk.com)

# NEWMARK



## 2401-2501 INTERNATIONAL LANE, MADISON, WISCONSIN

### 2401 International Lane



### 2401 INTERNATIONAL LANE

Building Features

#### Tax ID #:

081030402987

#### Year Built

1986 (addition in 1989)

#### Stories

Three (3)

#### Heating System

VAV system with electric heat

#### Power

1200A switchgear

#### Generator

Owned

#### Fully Sprinkled

#### Items Of Note

Data Center wing with raised floors and backup generator.

C-Level wing with large private offices, kitchenette & conference rooms

### CONTACT

#### Chuck Redjinski

*Managing Director*

t 608-663-6006

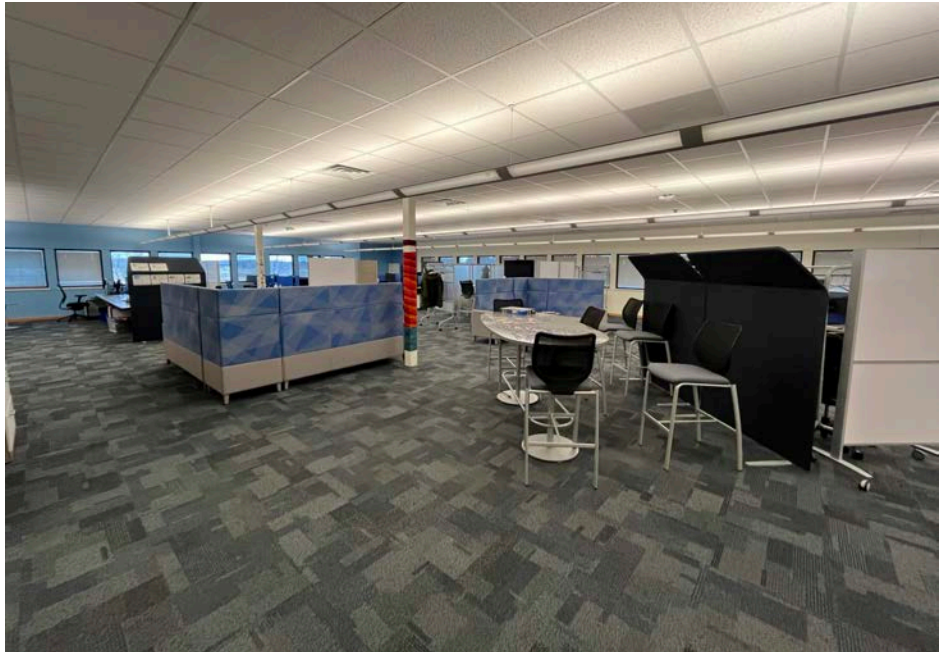
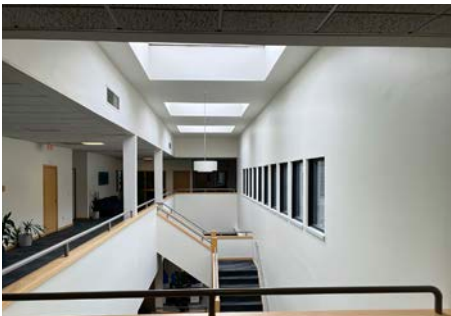
chuck.redjinski@nrmk.com

[nrmk.com](http://nrmk.com)

# NEWMARK

**2401-2501 INTERNATIONAL LANE, MADISON, WISCONSIN**

2401 International Lane



*For information, please contact:*

**Chuck Redjinski**

*Managing Director*

t 608-663-6006

chuck.redjinski@nmrk.com

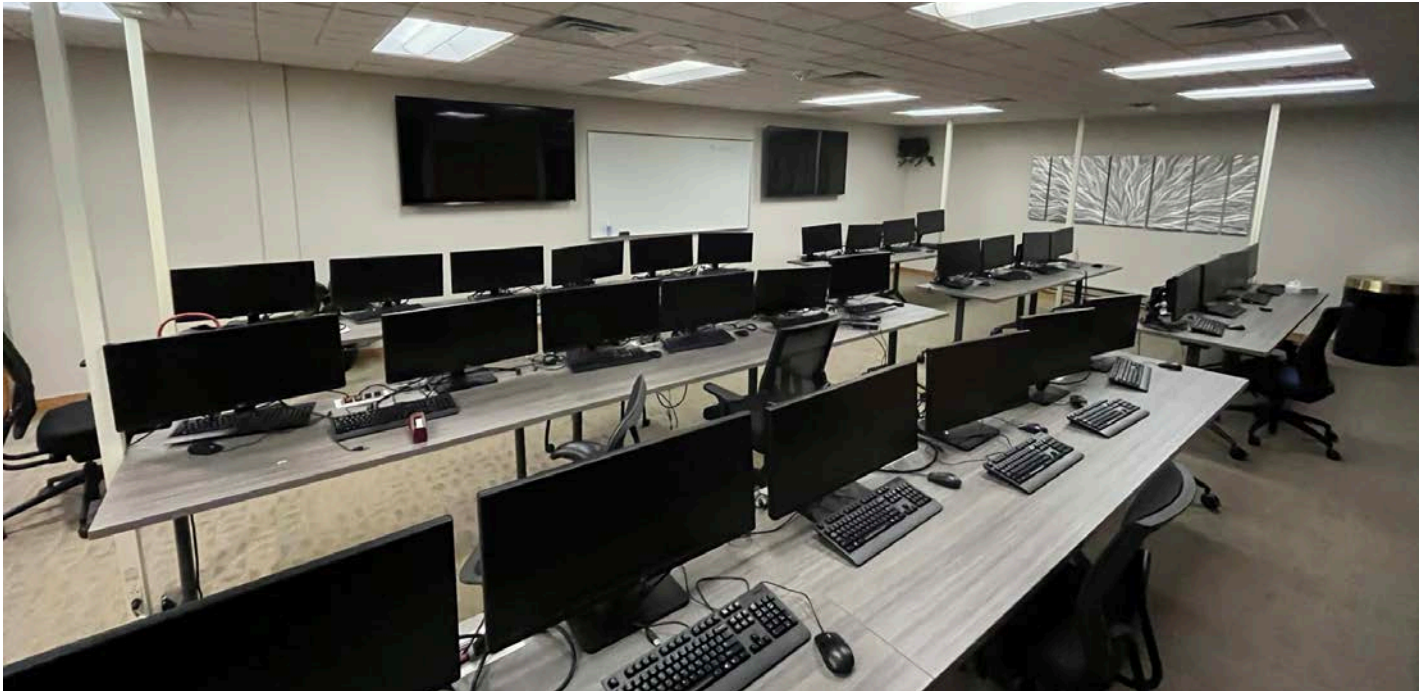
**nmrk.com**

**NEWMARK**



2401-2501 INTERNATIONAL LANE, MADISON, WISCONSIN

2401 International Lane - Executive Wing



*For information, please contact:*

**Chuck Redjinski**

*Managing Director*

t 608-663-6006

chuck.redjinski@nmrk.com

**nmrk.com**

**NEWMARK**



2401-2501 INTERNATIONAL LANE, MADISON, WISCONSIN

Parcel Boundaries



*For information, please contact:*

**Chuck Redjinski**

*Managing Director*

t 608-663-6006

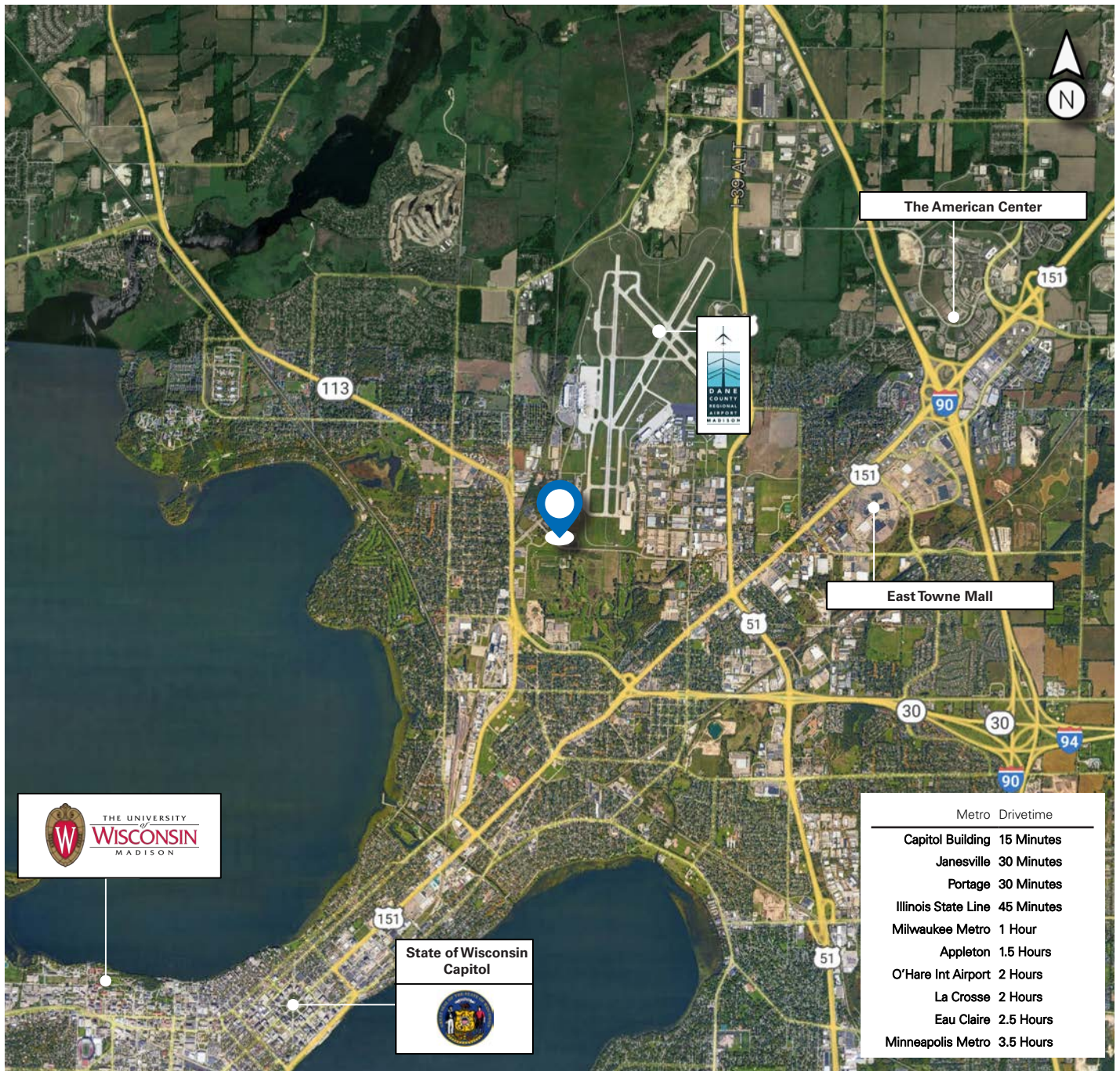
chuck.redjinski@nrmk.com

[nrmk.com](http://nrmk.com)

**NEWMARK**



Local Points of Interests



For information, please contact:

**Chuck Redjinski**

Managing Director

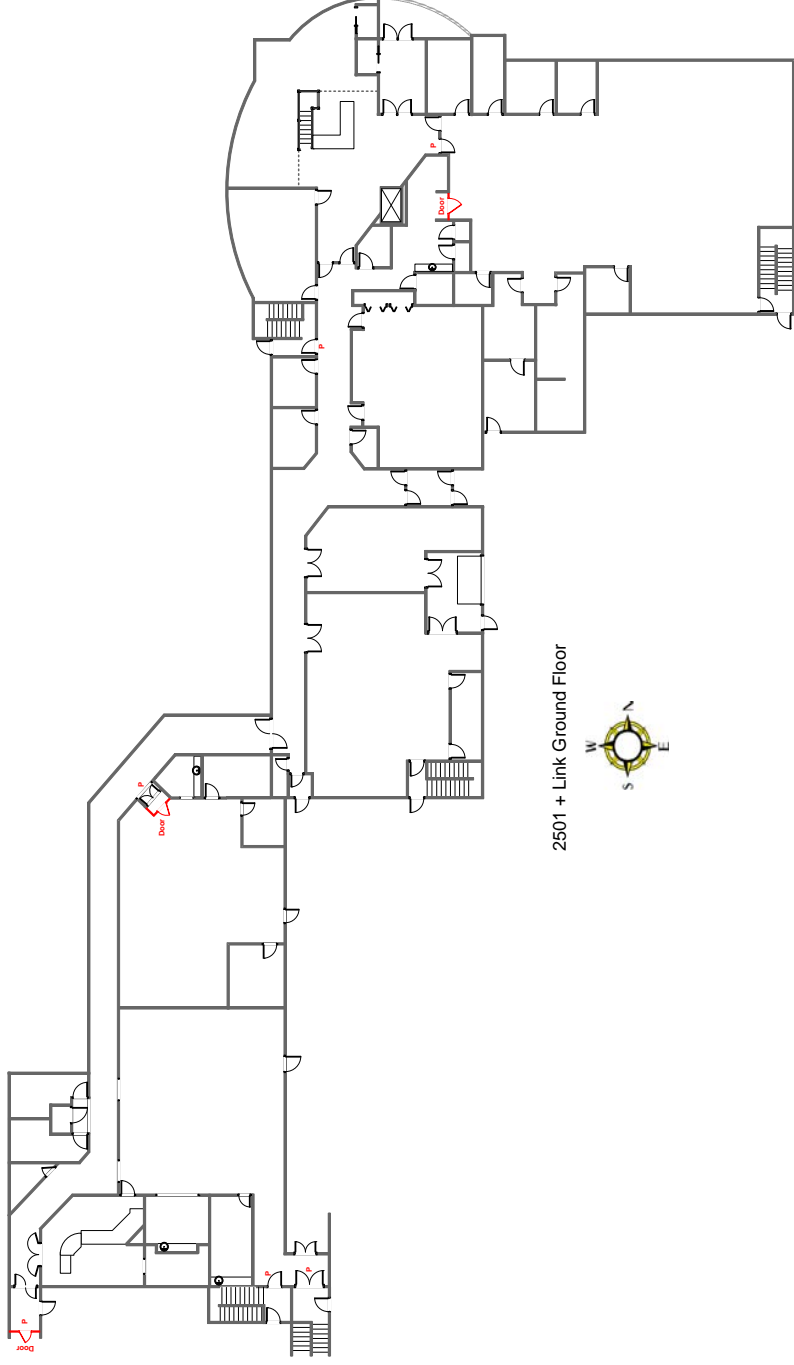
t 608-663-6006

chuck.redjinski@nmrk.com

[nmrk.com](http://nmrk.com)

2401-2501 INTERNATIONAL LN, MADISON, WISCONSIN

2501 + Link Ground Floor



**CONTACT**

**Chuck Redjinski**

*Director*

t 608-663-6006

chuck.redjinski@nmrk.com

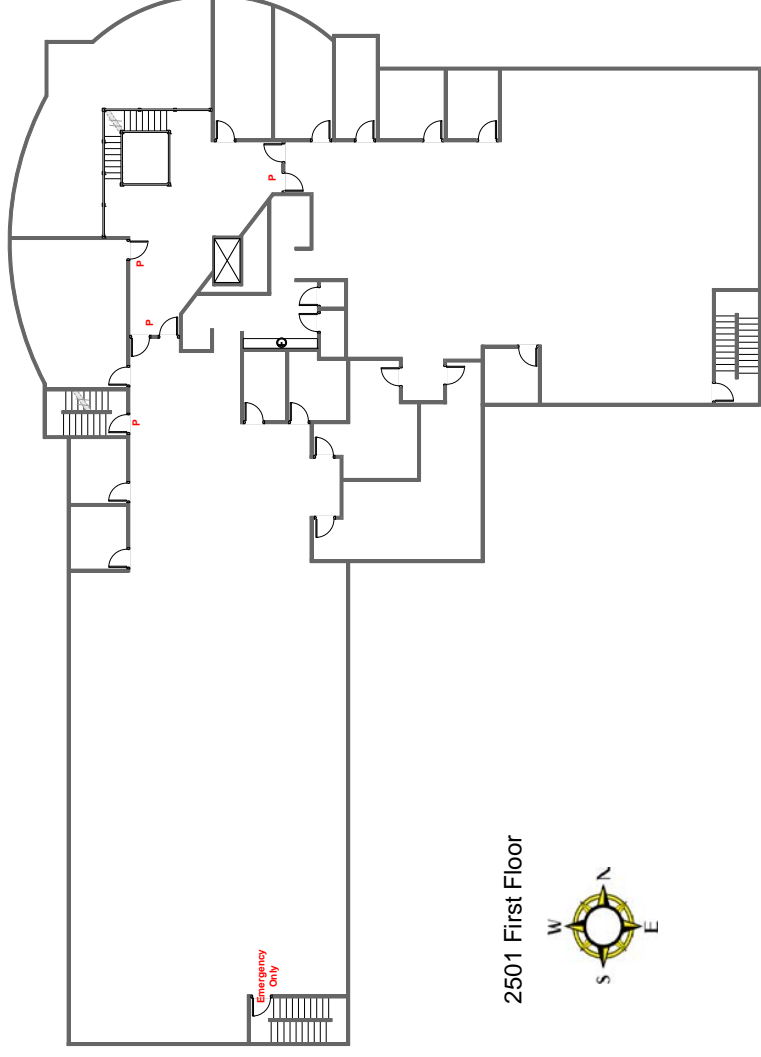
[nmrk.com](http://nmrk.com)

**NEWMARK**



2401-2501 INTERNATIONAL LN, MADISON, WISCONSIN

2501 First Floor



2501 First Floor



**CONTACT**

**Chuck Redjinski**

*Director*

t 608-663-6006

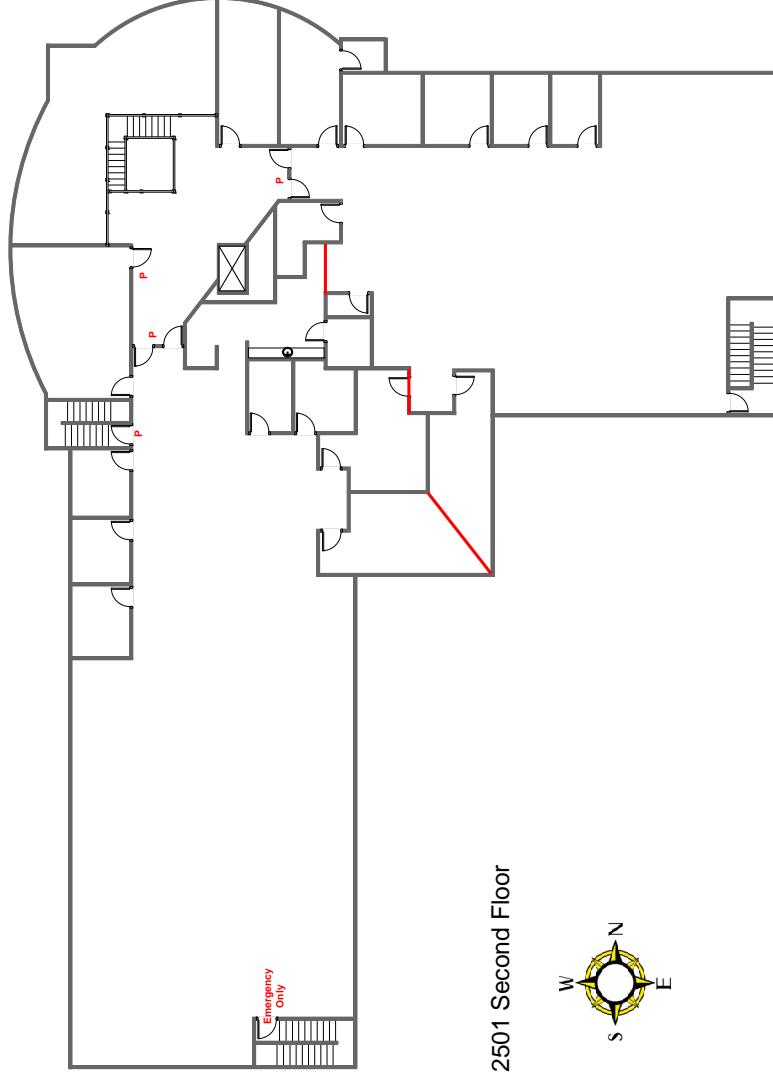
chuck.redjinski@nmrk.com

[nmrk.com](http://nmrk.com)

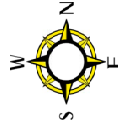
**NEWMARK**

2401-2501 INTERNATIONAL LN, MADISON, WISCONSIN

2501 Second Floor



2501 Second Floor



**CONTACT**

**Chuck Redjinski**

*Director*

t 608-663-6006

chuck.redjinski@nmrk.com

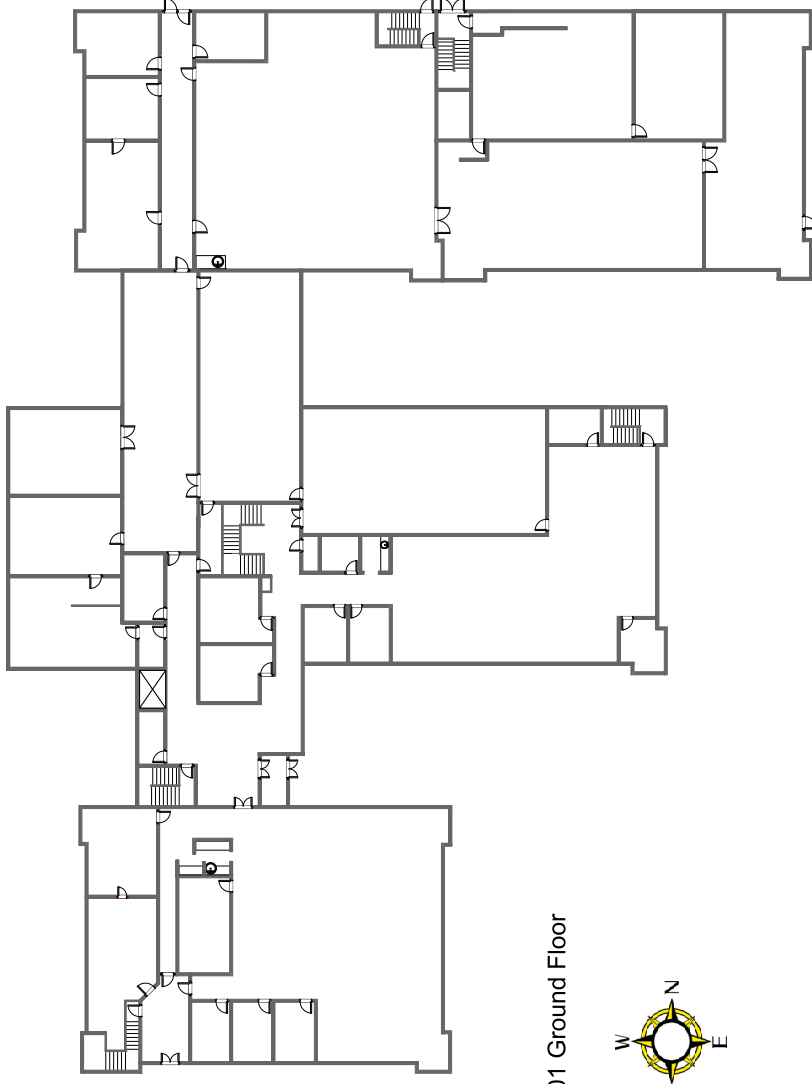
[nmrk.com](http://nmrk.com)

**NEWMARK**

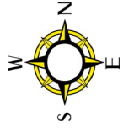


2401-2501 INTERNATIONAL LN, MADISON, WISCONSIN

2401 Ground Floor



2401 Ground Floor



---

**CONTACT**

**Chuck Redjinski**

*Director*

t 608-663-6006

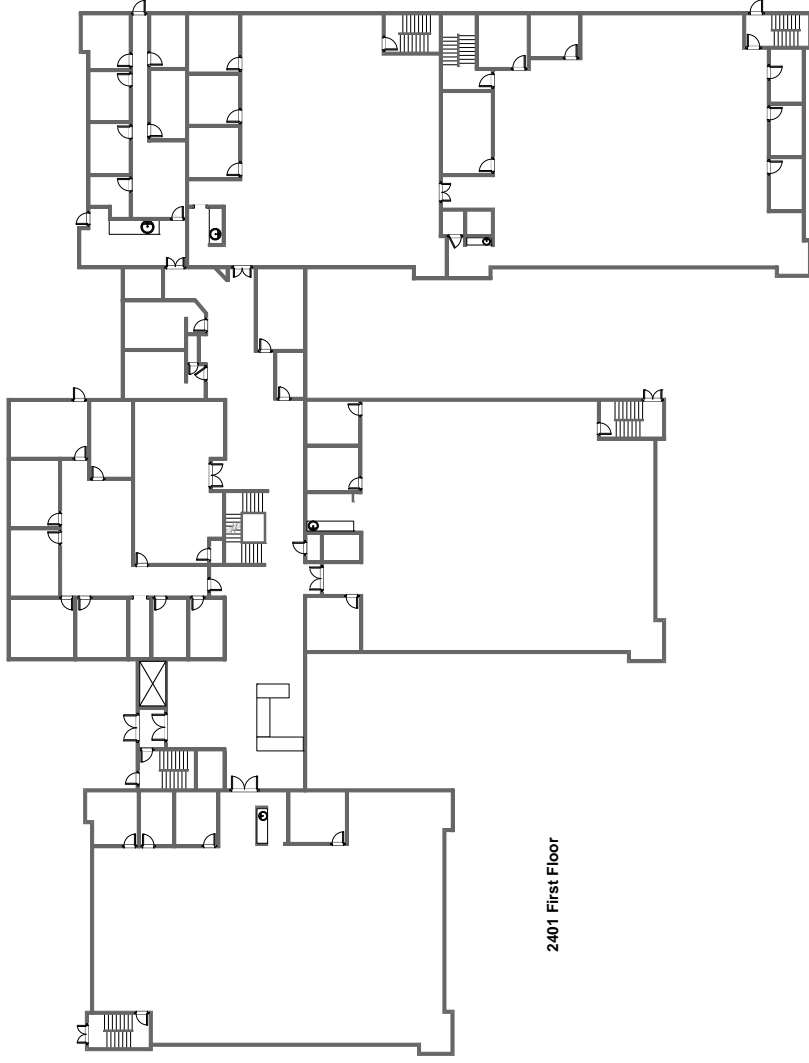
chuck.redjinski@nmrk.com

[nmrk.com](http://nmrk.com)

**NEWMARK**

2401-2501 INTERNATIONAL LN, MADISON, WISCONSIN

2401 First Floor



2401 First Floor

---

**CONTACT**

**Chuck Redjinski**

*Director*

t 608-663-6006

chuck.redjinski@nmark.com

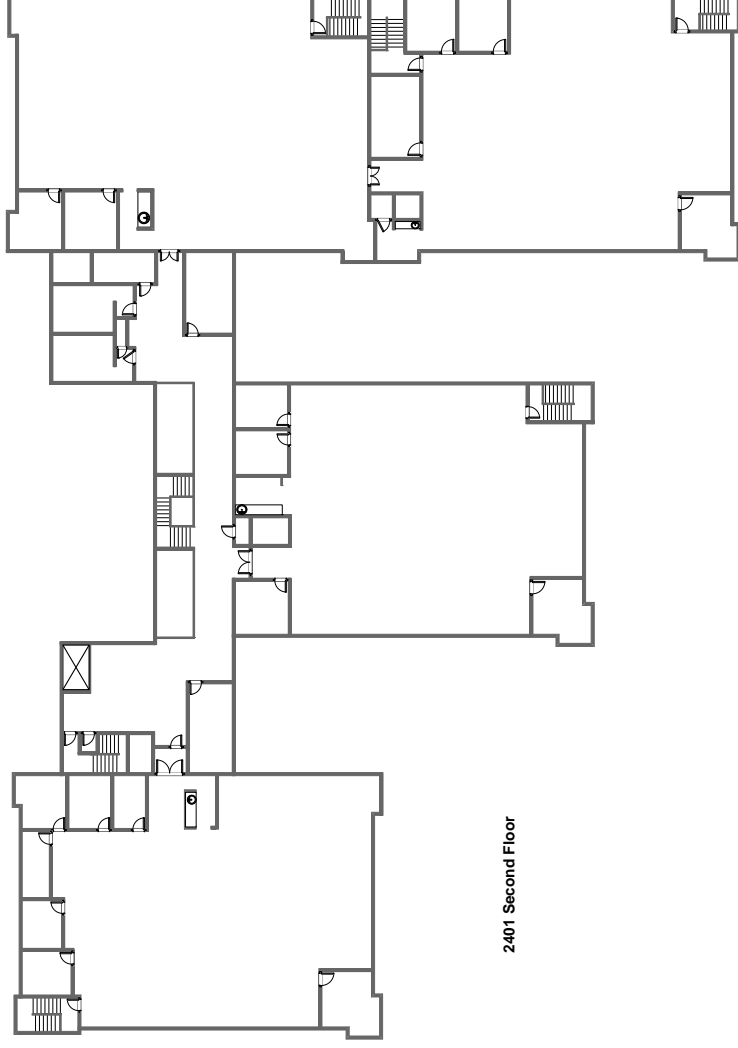
[nmark.com](http://nmark.com)

**NEWMARK**



2401-2501 INTERNATIONAL LN, MADISON, WISCONSIN

2401 Second Floor



2401 Second Floor

---

**CONTACT**

**Chuck Redjinski**

*Director*

t 608-663-6006

chuck.redjinski@nmrk.com

[nmrk.com](http://nmrk.com)

**NEWMARK**

---

# STATE OF WISCONSIN BROKER DISCLOSURE TO NON-RESIDENTIAL CUSTOMERS

**Wisconsin law requires all real estate licensees to give the following information about brokerage services to prospective customers.**

Prior to negotiating on your behalf the brokerage firm, or an agent associated with the firm, must provide you the following disclosure statement.

## **DISCLOSURE TO CUSTOMERS**

You are a customer of the brokerage firm (hereinafter Firm). The Firm is either an agent of another party in the transaction or a subagent of another firm that is the agent of another party in the transaction. A broker or a salesperson acting on behalf of the Firm may provide brokerage services to you. Whenever the Firm is providing brokerage services to you, the Firm and its brokers and salespersons (hereinafter Agents) owe you, the customer, the following duties:

- The duty to provide brokerage services to you fairly and honestly.
- The duty to exercise reasonable skill and care in providing brokerage services to you.
- The duty to provide you with accurate information about market conditions within a reasonable time if you request it, unless disclosure of the information is prohibited by law.
- The duty to disclose to you in writing certain Material Adverse Facts about a property, unless disclosure of the information is prohibited by law (see “Definition of Material Adverse Facts” below).
- The duty to protect your confidentiality. Unless the law requires it, the Firm and its Agents will not disclose your confidential information or the confidential information of other parties (see “Confidentiality Notice To Customers” below).
- The duty to safeguard trust funds and other property held by the Firm or its Agents.
- The duty, when negotiating, to present contract proposals in an objective and unbiased manner and disclose the advantages and disadvantages of the proposals.

Please review this information carefully. An agent of the Firm can answer your questions about brokerage services, but if you need legal advice, tax advice, or a professional property inspection, contact an attorney, tax advisor, or property inspector.

This disclosure is required by section 452.135 of the Wisconsin statutes and is for information only. It is a plain-language summary of the duties owed to a customer under section 452.133(1) of the Wisconsin statutes.

## **CONFIDENTIALITY NOTICE TO CUSTOMERS**

The Firm and its Agents will keep confidential any information given to the Firm or its Agents in confidence, or any information obtained by the Firm or its Agents that a reasonable person would want to be kept confidential, unless the information must be disclosed by law or you authorize the Firm to disclose particular information. The Firm and its Agents shall continue to keep the information confidential after the Firm is no longer providing brokerage services to you.

The following information is required to be disclosed by law:

1. Material Adverse Facts, as defined in Wis. Stat. §452.01 (5g) (see “definition of material adverse facts” below).
2. Any facts known by the Firm or its Agents that contradict any information included in a written inspection report on the property or real estate that is the subject of the transaction.

To ensure that the Firm and its Agents are aware of what specific information you consider confidential, you may list that information below or provide that information to the Firm or its Agents by other means. At a later time, you may also provide the Firm or its Agents with other information you consider to be confidential.

CONFIDENTIAL INFORMATION: \_\_\_\_\_  
\_\_\_\_\_

NON-CONFIDENTIAL INFORMATION (The following information may be disclosed by the Firm and its Agents): \_\_\_\_\_  
\_\_\_\_\_

(INSERT INFORMATION YOU AUTHORIZE TO BE DISCLOSED SUCH AS FINANCIAL QUALIFICATION INFORMATION)

## **DEFINITION OF MATERIAL ADVERSE FACTS**

A “Material Adverse Fact” is defined in Wis. Stat. §452.01 (5g) as an Adverse Fact that a party indicates is of such significance, or that is generally recognized by a competent licensee as being of such significance to a reasonable party, that it affects or would affect the party’s decision to enter into a contract or agreement concerning a transaction or affects or would affect the party’s decision about the terms of such a contract or agreement.

An “Adverse Fact” is defined in Wis. Stat. §452.01 (1e) as a condition or occurrence that a competent licensee generally recognizes will significantly and adversely affect the value of the property, significantly reduce the structural integrity of improvements to real estate, or present a significant health risk to occupants of the property; or information that indicates that a party to a transaction is not able to or does not intend to meet his or her obligations under a contract or agreement made concerning the transaction.

## **SEX OFFENDER REGISTRY**

Notice: You may obtain information about the sex offender registry and persons registered with the registry by contacting the Wisconsin Department of Corrections on the Internet at <http://www.doc.wi.gov/> or by phone at 608-240-5830.

No representation is made as to the legal validity of any provision or the adequacy of any provision in any specific transaction.