

## Eisenhower Tower Space Available

### Amenities:

- From 100 to 14,400 sqft available
- Ample Parking
- Parking Garage Available
- Near CTA Train and Bus Lines
- 5 Day Janitorial Service
- Owner Managed
- 3 High Speed Elevators
- On-Site Management & Maintenance Team
- 7 Day a Week Security
- Storage Space Available
- Building Signage Available for Multiple Floor Tenant
- HVAC Included
- Restaurant in Building

For LEASE \$16-19psf MG  
**Renovated Office Building in Maywood, IL**

*Immediate Access to the Eisenhower Express Way:*  
**1701 S. 1<sup>st</sup> Avenue**



4747 W. Peterson Ave.,  
Chicago, IL 60646  
P: 773-736-4100  
E: [info@imperialrealtyco.com](mailto:info@imperialrealtyco.com)  
[www.imperialrealtyco.com](http://www.imperialrealtyco.com)

**1701 S 1<sup>st</sup> Ave, Maywood, IL, 60153**

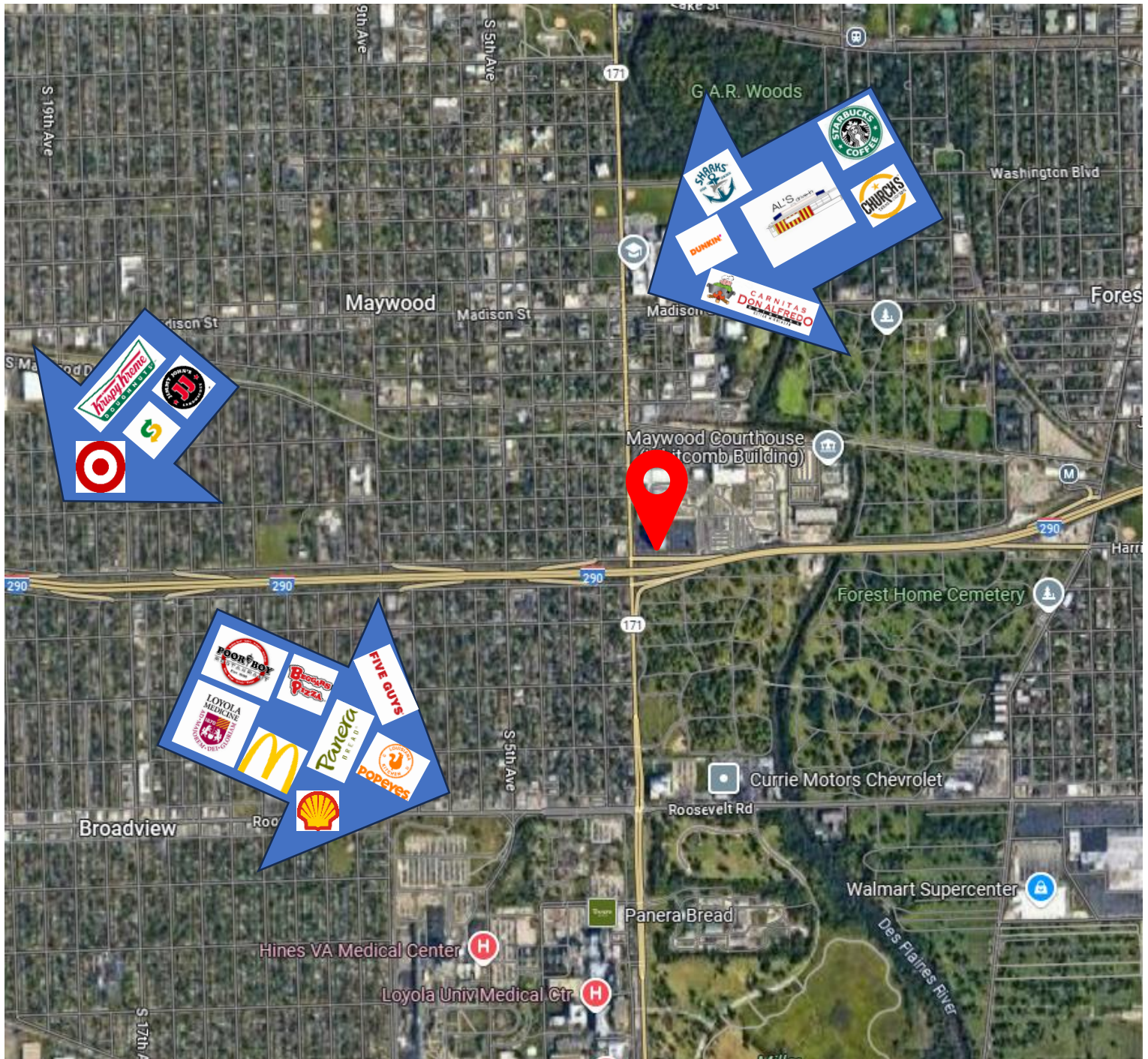
**Features Include:** The Eisenhower Tower is an office building available for lease located at 1701 South First Avenue in Maywood. Constructed overlooking the Eisenhower Expressway (I-290) the property is ideally situated between the East-West Corridor and the Loop. Oakbrook Terrace is a 10 minute drive west and Chicago's Union Station is a 16 minute drive east. O'Hare and Midway airports are both 20 minutes away. The office building is less than a mile from Veterans Administration Hospital, Loyola University Medical Center, Riveredge Hospital, Clerk of the Circuit Court of Cook County - District 4 and the Village Hall of Maywood.

Please call to arrange a private viewing: 773-736-4100 [info@imperialrealtyco.com](mailto:info@imperialrealtyco.com)

The information herein has been gathered from sources deemed reliable. We have no reason to doubt its accuracy but we do not guarantee it.



For LEASE \$16-19psf  
**Prime Office Space Available in Maywood**



**IMPERIAL**  
REALTY COMPANY

1701 S 1<sup>st</sup> Ave, Maywood, IL, 60153

4747 W. Peterson Ave.,  
Chicago, IL 60646  
P: 773-736-4100  
E: [info@imperialrealtyco.com](mailto:info@imperialrealtyco.com)  
[www.imperialrealtyco.com](http://www.imperialrealtyco.com)

**Additional Information:** Just 30 minutes from O'Hare and Midway Airports, downtown Chicago, LaGrange, Oakbrook, and Rosemont. Close access to commuter rail, an expressway, and major thoroughfares that run in all directions.

Please call to arrange a private viewing: 773-736-4100 [info@imperialrealtyco.com](mailto:info@imperialrealtyco.com)

The information herein has been gathered from sources deemed reliable. We have no reason to doubt its accuracy but we do not guarantee it.