



FOR SUBLEASE

TURN-KEY DOWNTOWN HONOLULU OFFICE SPACE

**707 Richards Street, Suite 405,
Honolulu, HI 96813**

PROPERTY DESCRIPTION

Fully built out and ready for immediate occupancy, this thoughtfully designed office allows tenants to easily step into a functional workspace with minimal downtime or upfront investment. Able to accommodate a wide range of businesses, this office suite features two conference rooms, multiple private offices, server/mail room, open workspace, plus a large kitchen/lounge area with direct access to an outdoor lanai. Strategically located with convenient and immediate access to government offices, financial institutions, and the rest of the central business district of Honolulu. Landlord will consider an extension of term for a qualified tenant.

PROPERTY SUMMARY

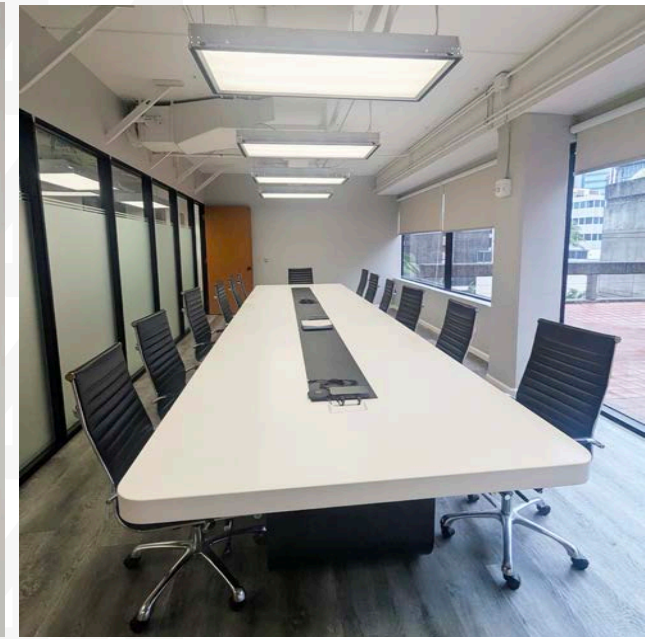
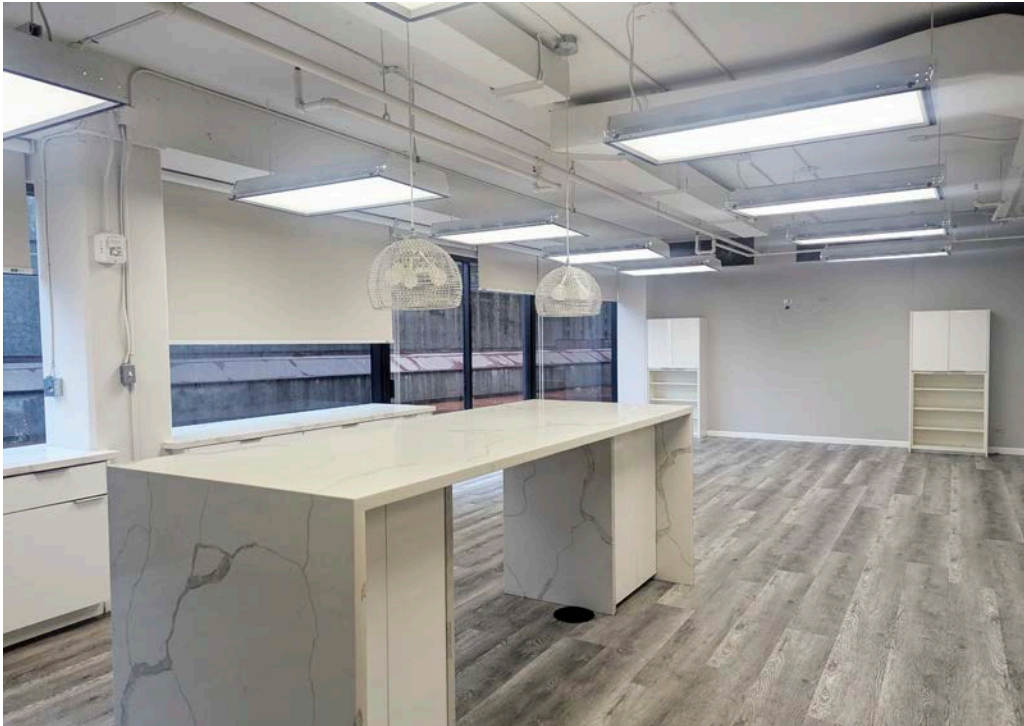
Available Space:	5,975 SF
Base Rent:	Upon Request
CAM:	\$1.61/SF/mo
TMK:	1-2-1-26-13
Zoning:	B-2
Lease Term:	Through December 31, 2028



Brant M. Yasaka (S)
RS-68051
808-271-4697
byasaka@cbi-hawaii.com

NAI CBI Hawaii
1712 S. King Street Suite 201
Honolulu, HI 96826
808.942.7100 | www.cbi-hawaii.com





Brant M. Yasaka (S)
RS-68051
808-271-4697
byasaka@cbi-hawaii.com

NAI CBI Hawaii
1712 S. King Street Suite 201
Honolulu, HI 96826
808.942.7100 | www.cbi-hawaii.com





Brant M. Yasaka (S)
RS-68051
808-271-4697
byasaka@cbi-hawaii.com

NAI CBI Hawaii
1712 S. King Street Suite 201
Honolulu, HI 96826
808.942.7100 | www.cbi-hawaii.com

