

1910 W. FORT ST (723 ROSA PARKS BLVD)

DETROIT, MICHIGAN

+/-78,830 SF // FOR SALE

Albert Ellis
Senior Associate
+1 248 358 6111
albert.ellis@cushwake.com

John VanNoord
Senior Associate
+1 248 358 6106
john.vannoord@cushwake.com

Garrett Keais
Executive Managing Director
+1 248 358 6112
garrett.keais@cushwake.com



PROPERTY HIGHLIGHTS

+/-78,830 SF

FOR OWNER USE/ REDEVELOPMENT

- + Industrial space ready for redevelopment
- + Ceiling heights 14' under beam
- + Four (4) interior loading docks
- + Zoned M4: Heavy Industrial
- + 1.79 - 2.81 acres available immediately
- + Less than a mile from Detroit Train Station redevelopment by Ford Motor Company
- + Detroit River and Ambassador Bridge views possible
- + Additional space may be made available in the future (Total Site: 5.16 acres)



1910 W. FORT STREET
(723 ROSA PARKS BLVD)
DETROIT, MI 48216

AERIAL MAP



W LAFAYETTE BLVD

ROSA PARKS BLVD

W FORT ST

1910 W. FORT STREET
(723 ROSA PARKS BLVD)
DETROIT, MI 48216

COULD BE MADE
AVAILABLE

BUILDING SPECS

1910 W. FORT ST (723 ROSA PARKS BLVD)
DETROIT, MI 48216

GENERAL INFORMATION

ADDRESS	1910 W. Fort Street (723 Rosa Parks Blvd) Detroit, MI 48216
TOTAL BUILDING AREA	78,830 SF
OFFICE AREA	8,830 SF
INDUSTRIAL AREA	70,000 SF
DIVISIBLE TO	26,800 SF
PRIMARY USE	Industrial/ Manufacturing/ Redevelopment
PROPERTY CLASS	C
YEAR BUILT / RENOVATED	1930/1980
CONSTRUCTION TYPE	Metal
STORIES	1

SITE DETAILS

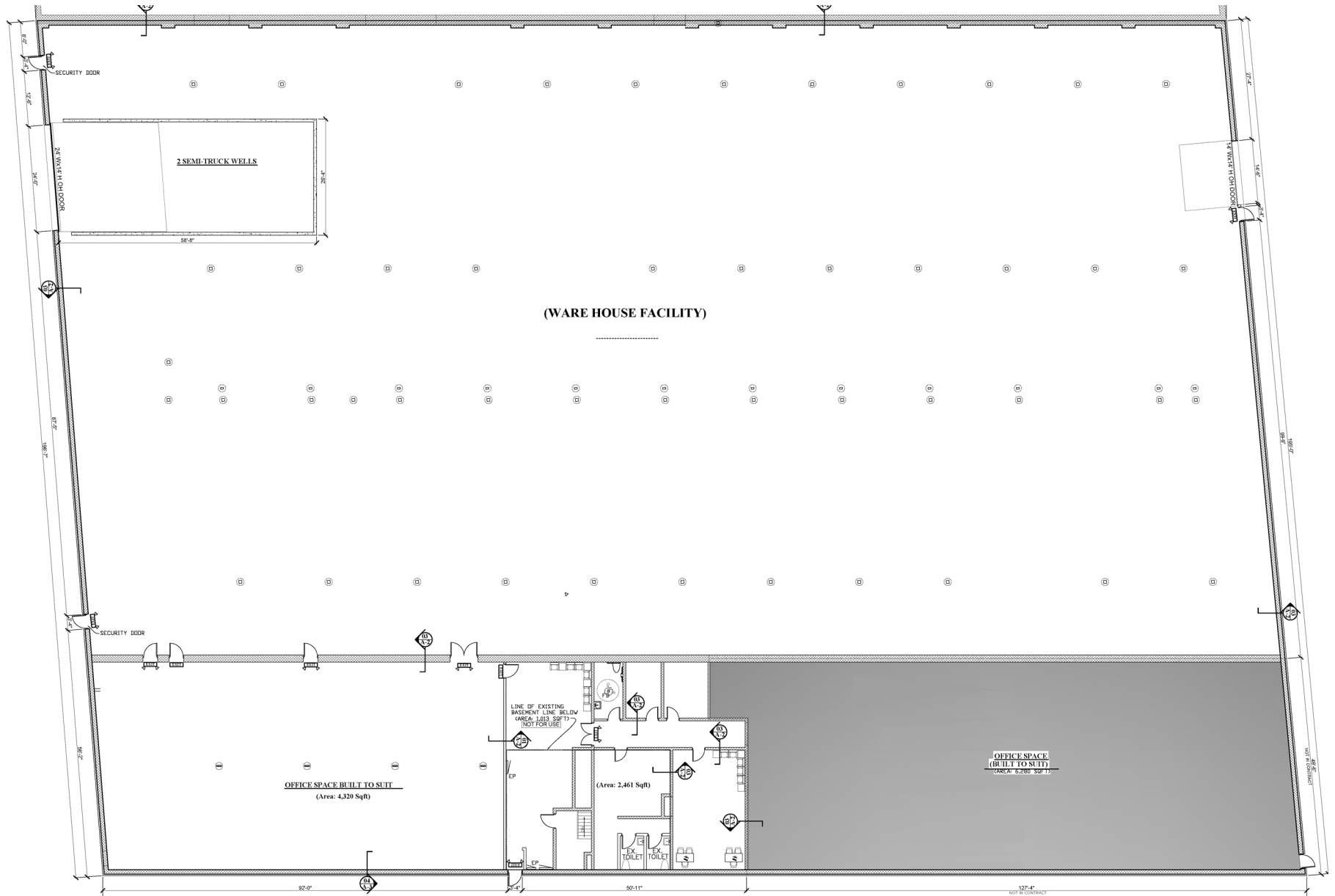
TOTAL ACREAGE	1.79-2.81 acres available immediately
ZONING	M4: Heavy Industrial
PARCEL ID	67-696843
MAJOR CROSSROADS	W Fort St & Rosa Parks Blvd

BUILDING AMENITIES

CEILING CLEARANCE	14' under beam
DOCKS/WELLS	Four (4) interior docks
GRADE DOORS	Four (4) 12'x12'
INDUSTRIAL AREA HVAC	Tubular radiant
INDUSTRIAL AREA LIGHTING	Metal halide
FLOOR THICKNESS	~12"
FLOOR DRAINS	Yes
FIRE SUPPRESSION	Yes (wet)
ELECTRIC	3,000amps/480v
AIR LINES	Yes
LUNCH/BREAK ROOM	Yes
BUILDING EXPANDABLE	Yes
ROOF	Full roof updates within last 5 years

FLOOR PLAN

1910 W. FORT ST (723 ROSA PARKS BLVD)
DETROIT, MI 48216



BUILDING PHOTOS

1910 W. FORT ST (723 ROSA PARKS BLVD)
DETROIT, MI 48216



ALBERT ELLIS
Senior Associate
+1 248 358 6111
albert.ellis@cushwake.com

JOHN VANNOORD
Senior Associate
+1 248 358 6106
john.vannoord@cushwake.com

GARRETT KEAIS
Executive Managing Director
+1 248 358 6112
garrett.keais@cushwake.com



BUILDING PHOTOS

1910 W. FORT ST (723 ROSA PARKS BLVD)
DETROIT, MI 48216



ALBERT ELLIS
Senior Associate
+1 248 358 6111
albert.ellis@cushwake.com

JOHN VANNOORD
Senior Associate
+1 248 358 6106
john.vannoord@cushwake.com

GARRETT KEAIS
Executive Managing Director
+1 248 358 6112
garrett.keais@cushwake.com

