

Available May 1, 2022
13,506 square feet

3715 Laird Road

Mississauga, Ontario, Canada

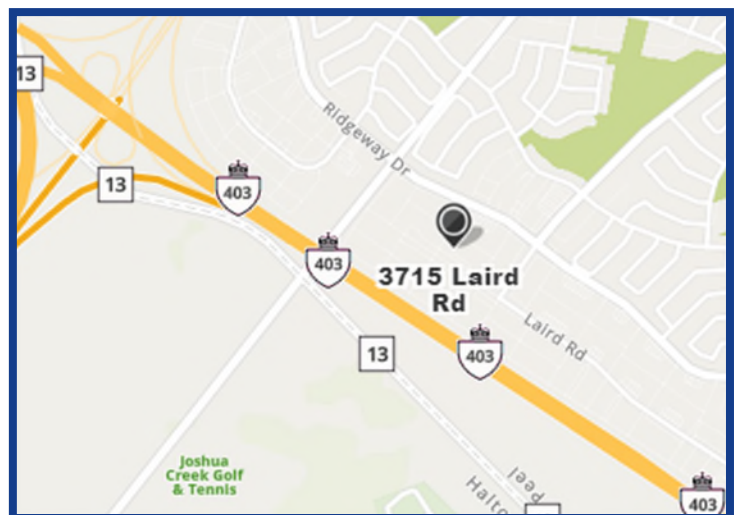
Located in West Mississauga north of Hwy. 403 & Dundas Street West on Laird Road. This multi-tenant industrial building totals 78,382 square feet. It is in close proximity to retail shopping, dining and amenities with direct access to Hwy 401 and 407 ETR.

Unit 12: Available May 1, 2022:

- ◆ 13,506 sq ft, approx. 9% office (1,163 sf)
- ◆ Built out with 2 private offices, kitchen and open area.
- ◆ Three (3) Truck Level Shipping Doors
- ◆ Clear Ceiling Height: 22' 6" in warehouse

◆ Rates:

- ◆ Net Rent: \$13.00
- ◆ 2021 Estimated TMI: \$4.39

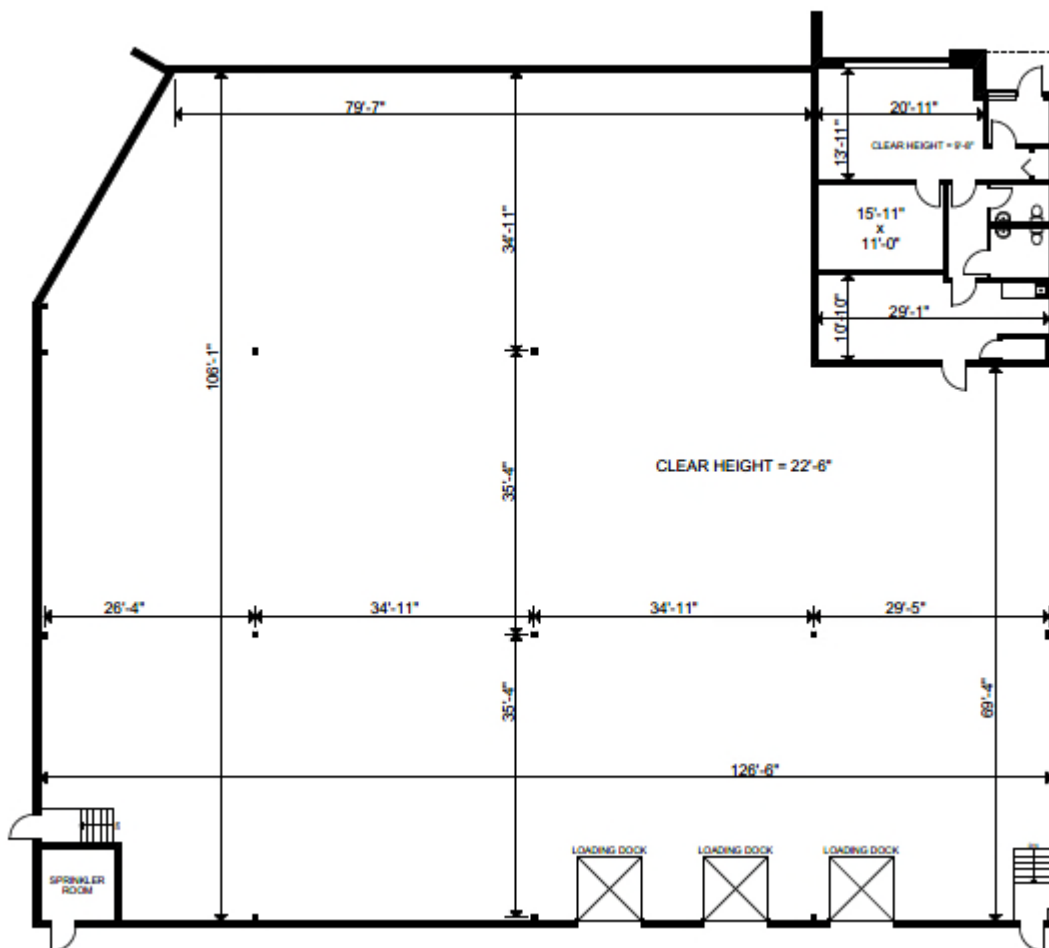


Tracy A. Hishon

Sales Representative
Director of Leasing, Real Estate Services
BentallGreenOak (Canada) Limited Partnership, Brokerage
Tel: 416-674-3562
Cell: 416-889-0459
Email: tracy.hishon@bentallgreenoak.com



3715 Laird Road, Unit 12—13,506 sf



For further information or arrange a tour, please contact :

Tracy A. Hishon, Sales Representative
Director of Leasing, Real Estate Services
BentallGreenOak (Canada) Limited Partnership, Brokerage
Tel: (416) 674—3562
Cell: (416) 889 — 0459
tracy.hishon@bentallgreenoak.com